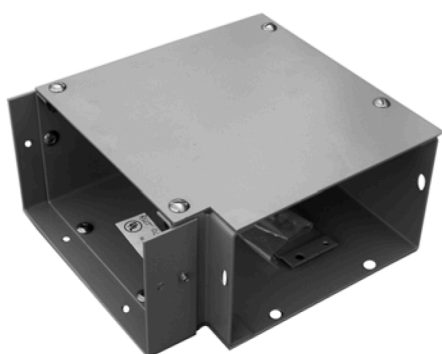


# Wall Duct

## Class 5250

### Catalog

5250CT9201  
R12/2024



# Legal Information

The information provided in this document contains general descriptions, technical characteristics and/or recommendations related to products/solutions.

This document is not intended as a substitute for a detailed study or operational and site-specific development or schematic plan. It is not to be used for determining suitability or reliability of the products/solutions for specific user applications. It is the duty of any such user to perform or have any professional expert of its choice (integrator, specifier or the like) perform the appropriate and comprehensive risk analysis, evaluation and testing of the products/solutions with respect to the relevant specific application or use thereof.

The Schneider Electric brand and any trademarks of Schneider Electric SE and its subsidiaries referred to in this document are the property of Schneider Electric SE or its subsidiaries. All other brands may be trademarks of their respective owner.

This document and its content are protected under applicable copyright laws and provided for informative use only. No part of this document may be reproduced or transmitted in any form or by any means (electronic, mechanical, photocopying, recording, or otherwise), for any purpose, without the prior written permission of Schneider Electric.

Schneider Electric does not grant any right or license for commercial use of the document or its content, except for a non-exclusive and personal license to consult it on an "as is" basis.

Schneider Electric reserves the right to make changes or updates with respect to or in the content of this document or the format thereof, at any time without notice.

**To the extent permitted by applicable law, no responsibility or liability is assumed by Schneider Electric and its subsidiaries for any errors or omissions in the informational content of this document, as well as any non-intended use or misuse of the content thereof.**

# Table of Contents

Wall Duct Application.....	5
Product Description .....	5
Economy and Flexibility .....	5
Standard Sizes and Types .....	6
Wall Duct Components .....	7
Straight Lengths .....	7
Straight Section (Flush or Surface-Mounted) .....	8
Wire Retainer .....	8
Coupling Device .....	9
Flush-to-Surface Adapter .....	9
Reducer Coupling .....	10
Partition .....	10
Elbow-Type Cabinet Connector .....	11
Cabinet Connector.....	12
End Cap .....	12
Tunnel .....	13
Elbows.....	14
Trench Duct Vertical Elbow Adapter .....	14
Sweep Floor Trench Vertical Elbow .....	14
Edgewise Elbow (or Cabinet Flange).....	15
Reverse Edgewise Elbow .....	16
Sweep Edgewise Elbow .....	16
Horizontal Elbow (Flush or Surface-Mounted) .....	17
Tee (Flush or Surface-Mounted) .....	18
Cross (Flush or Surface-Mounted) .....	18
Edgewise Tee Kit.....	19
Additional Items.....	19
Ceiling Drop-Out.....	19
Split Cover .....	20
Flanged Cabinet Connector .....	21
Sweep Edgewise Tee Kit .....	22
Dust Cover .....	22

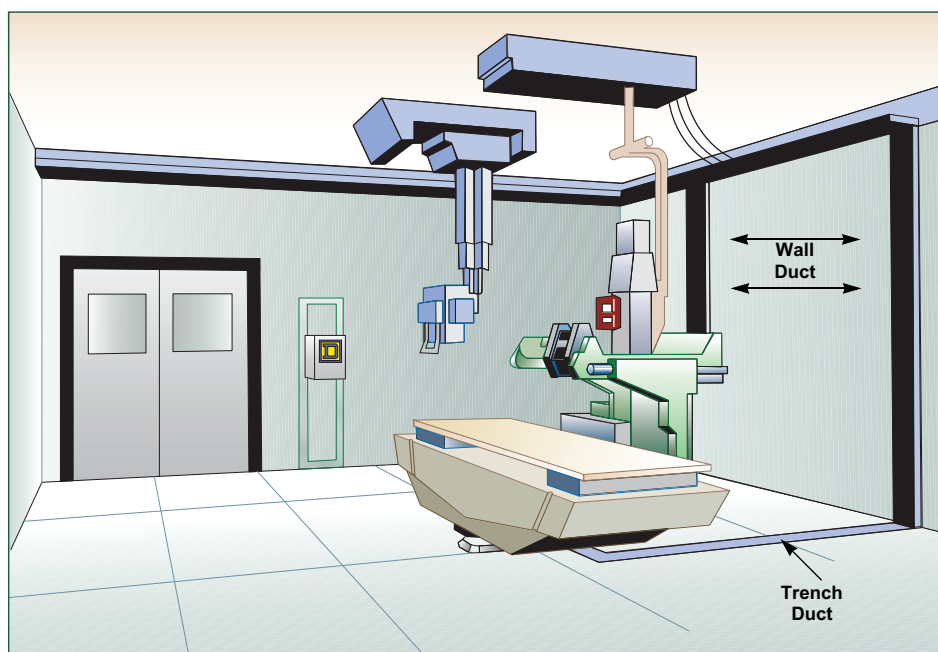


# Wall Duct Application

## Product Description

Wall duct is a UL® Listed, metal raceway used to enclose the wiring to diagnostic-imaging machines. Wall duct is used in combination with trench duct to provide a complete raceway system from the power and control consoles to the patient table. The raceway system enables a complete lay-in system. Cables can be installed by removing all covers and laying in the conductors. This is an important advantage due to the large diameter connectors used on the high voltage power cables. Whether these connectors are installed on the cable after “fishing and pulling” or factory-assembled into one customized unit, a lay-in system is necessary. Branch connection from the system is accomplished by pipe-nippling out of the covers or sides of the duct, or by removing sections of covers.

Each section of wall duct is furnished with covers. Customer selected variations can be flush or surface-mounted. Most applications will require a combination of each. The transition from one type to the other is accomplished by the use of a flush-to-surface device. The normal application has flush-mounted vertical duct connecting to a surface-mounted horizontal duct in the control rooms.

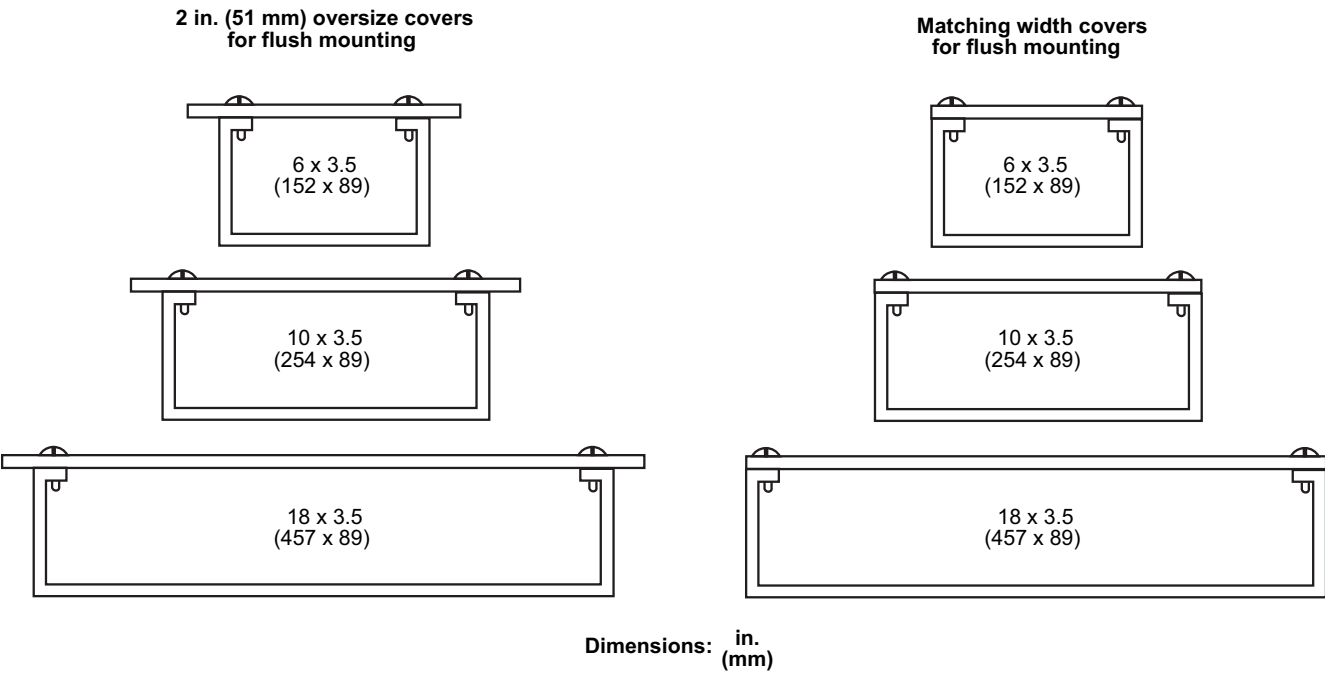


**NOTE:** Wall duct is shown surface-mounted on walls and in ceiling. Trench duct is shown installed flush with the finished floor.

## Economy and Flexibility

Economy and flexibility are the keys to comparing wall duct and cable-conduit systems. Conduit installations are fixed location systems. Wall duct, with its continuous covers, provides removable points of access. Modifications can be made to the room and equipment lay-out utilizing the existing wall duct locations, reflecting the superior flexibility of the wall duct as compared to conduit. With the continuing advances in medical-imaging technology, wall duct installations serve well during economical changes.

# Standard Sizes and Types



**NOTE:** Standard construction is 14-gauge steel with gray electrodeposition paint. Non-ferrous aluminum construction is also available—add “A” suffix to the catalog number.

# Wall Duct Components

## Straight Lengths

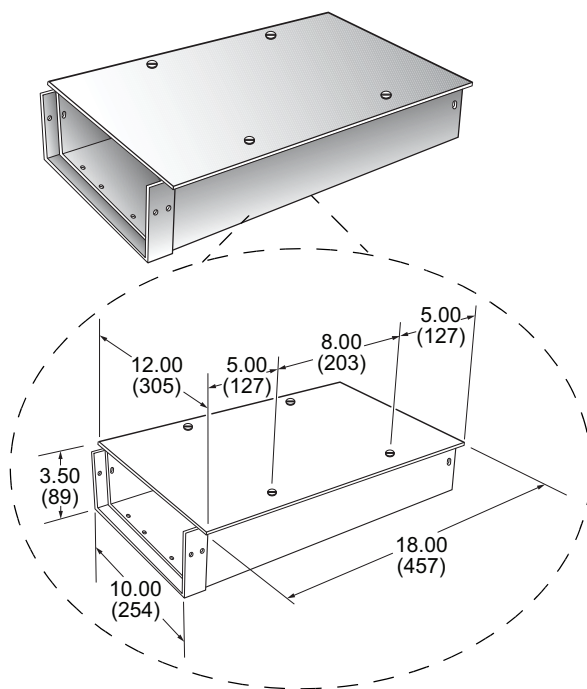
Straight lengths are available in 5 (1.5 m) and 18 in. (457 mm) lengths.

Standard sizes are:

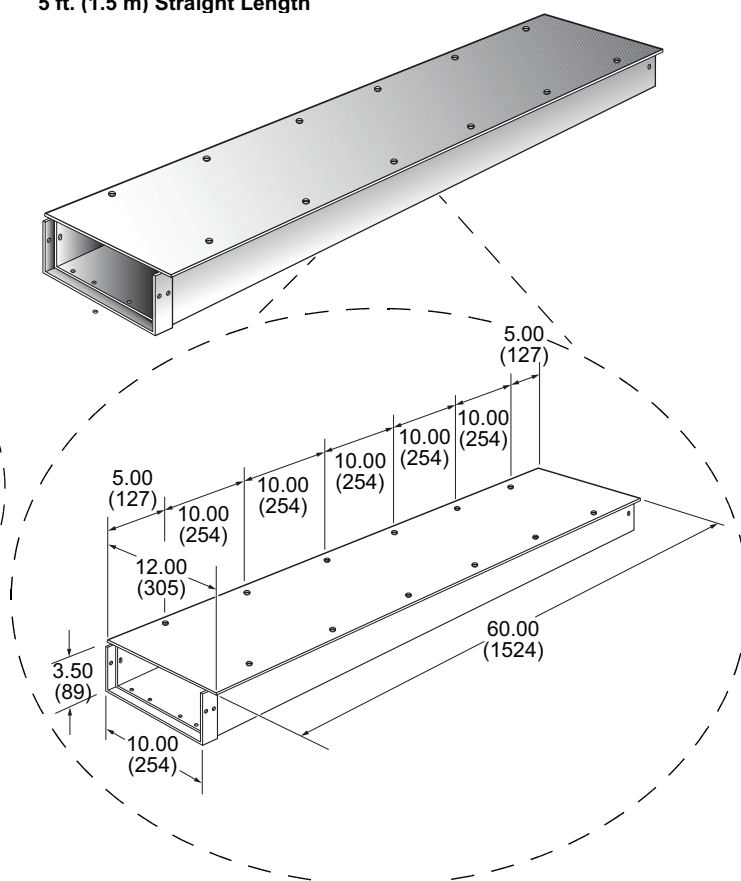
- 6 x 3.5 in. (152 x 89 mm)
- 10 x 3.5 in. (254 x 89 mm)
- 18 x 3.5 in. (457 x 89 mm)



18 in. (457 mm) Straight Length



5 ft. (1.5 m) Straight Length



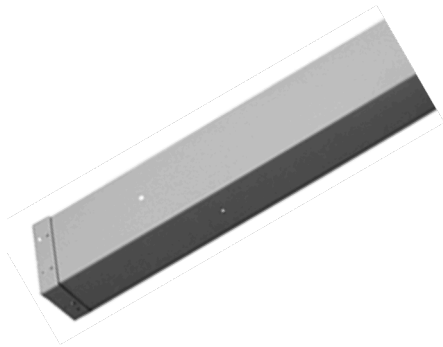
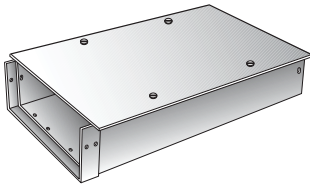
Dimensions: in.  
(mm)

Covers are available for either flush- or surface-mounted installations.

- 5 ft (1.5 m) duct lengths require two 30 in. (762 mm) covers
- 18 in. (457 mm) duct lengths use one cover

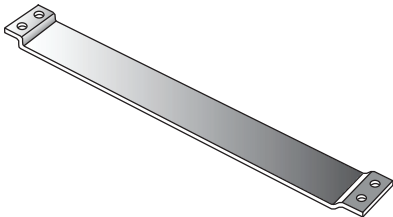
Covers are field cut as required.

# Straight Section (Flush or Surface-Mounted)



Dimensions		Catalog Number	Weight	
Width in. (mm)	Length		lb.	kg
6.00 (152) with Flush Covers	18.00 in. (457 mm)	RWT06S18	14.7	6.7
10.00 (254) with Flush Covers		RWT10S18	16.4	7.4
18.00 (457) with Flush Covers		RWT18S18	23.3	10.6
6.00 (152) with Surface Covers		RWT06S18S	14.6	6.6
10.00 (254) with Surface Covers		RWT10S18S	16.3	7.4
18.00 (457) with Surface Covers		RWT18S18S	23.2	10.5
6.00 (152) with Flush Covers	5 ft. (1.5 m)	RWT06S60	33.4	15.1
10.00 (254) with Flush Covers		RWT10S60	39.2	17.8
18.00 (457) with Flush Covers		RWT18S60	62.2	28.2
6.00 (152) with Surface Covers		RWT06S60S	30.6	13.9
10.00 (254) with Surface Covers		RWT10S60S	38.4	17.4
18.00 (457) with Surface Covers		RWT18S60S	59.4	26.9

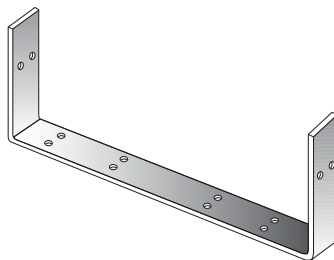
# Wire Retainer



Wire retainers are furnished for use at each duct joint. One additional retainer is furnished with each 5 ft (1.5 m) length to be field-installed in the center of the length at the cover plate joints. This is in order to close off any gaps between cover plates.



## Coupling Device

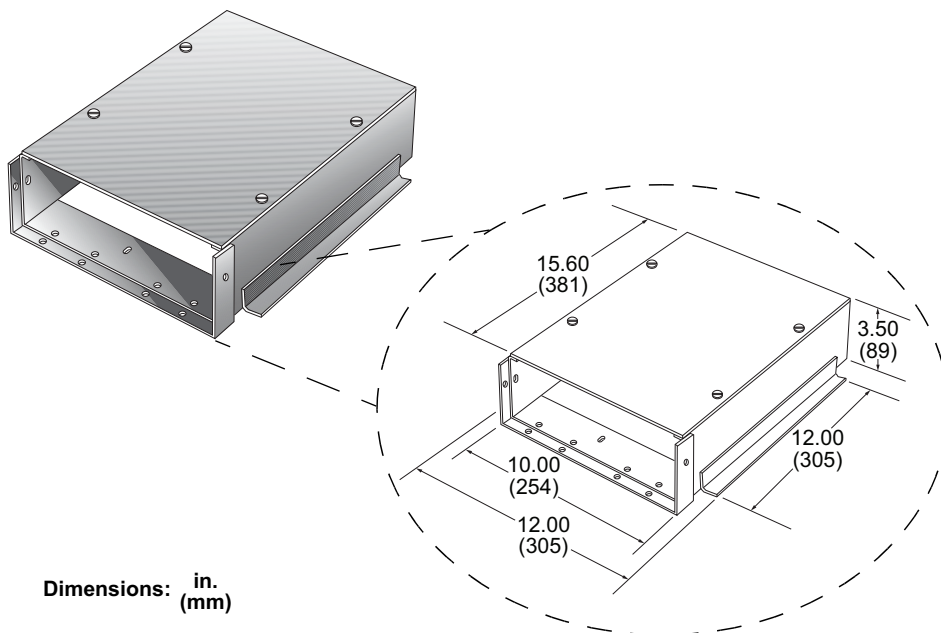


Each straight length is furnished with a coupling device attached to one end. When a full section of duct is cut to shorter lengths in the field, coupling holes can be field-drilled using the coupling device as a template. The coupling device forms a continuous electrical ground from one duct component to another.

**NOTE:** Extra coupling devices can be ordered for field-cut lengths.

Coupling Device Type in. (mm)	Catalog Number	Weight	
		lb.	kg
6.00 (152)	RWT06COUP	0.8	0.4
10.00 (254)	RWT10COUP	1.2	0.5
18.00 (457)	RWT18COUP	1.6	0.7

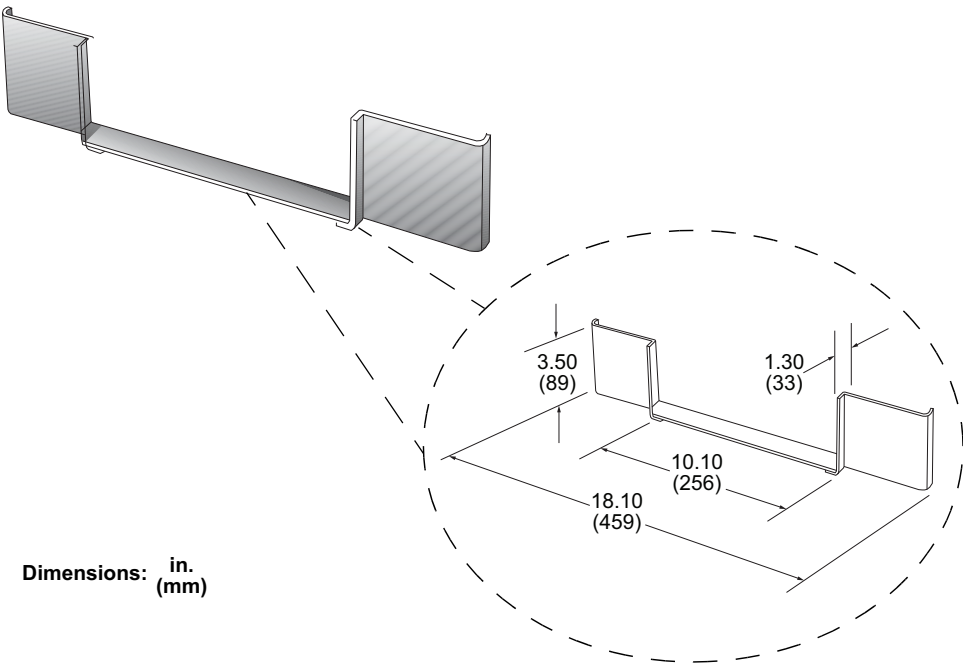
## Flush-to-Surface Adapter



Transitions from flush-to-surface mounted duct is made by the flush-to-surface adapter. The adapter mounts onto a flush-mounted cross. Flush-mounted straight lengths can be field modified to accept this adapter anywhere along a run.

Adapter Type in. (mm)	Catalog Number	Weight	
		lb.	kg
10.00 (254)	RWT10FS	11.9	5.4
18.00 (457)	RWT18FS	16.4	7.4

Reducer Coupling

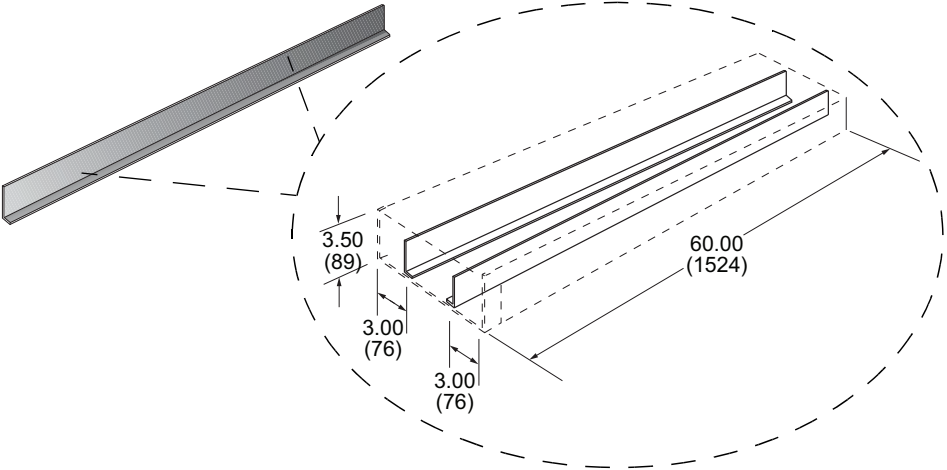


Dimensions: in.  
(mm)

Reducers are occasionally required. The reducer is a coupling that allows the reduction to be made at any duct joint.

Reducer Coupling Type in. (mm)	Catalog Number	Weight	
		lb.	kg
6.00–10.00 (152–254)	RWT06RC	1.5	0.7
10.00–18.00 (254–457)	RWTRC	2.1	0.9

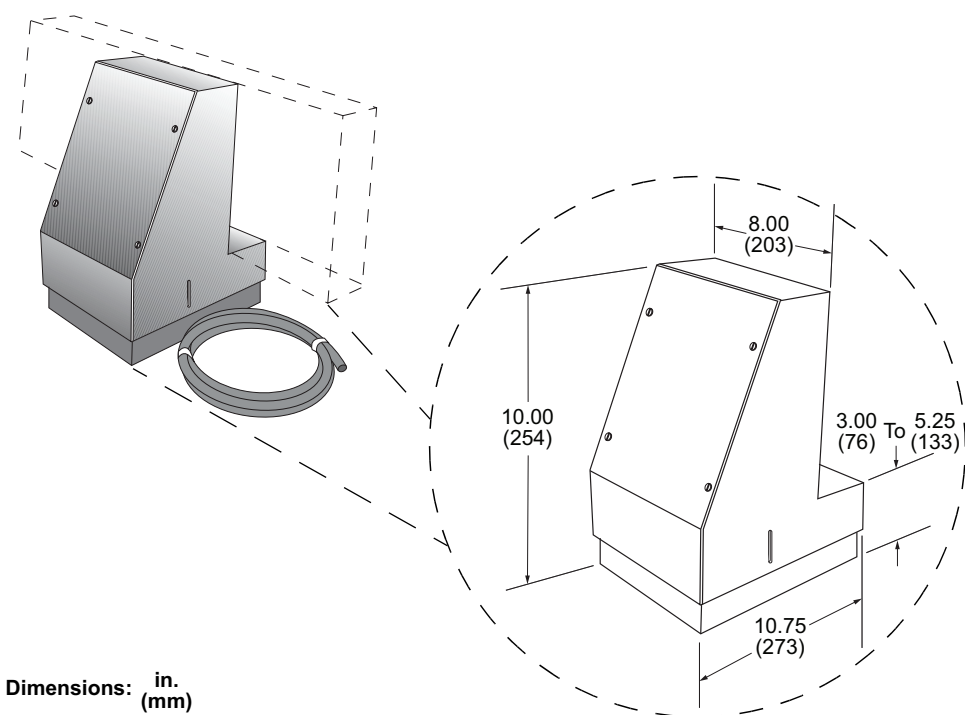
Partition



Partitioning is often required in wall duct. A 5 ft (1.5 m) long straight partition is furnished for field installation. Holes are provided to mount the partition into the duct, forming a 3 in. (76 mm) wide compartment.

Partition ft. (m)	Catalog Number	Weight	
		lb.	kg
5 (1.5) Partition	RWTP60	0.9	0.4

Elbow-Type Cabinet Connector

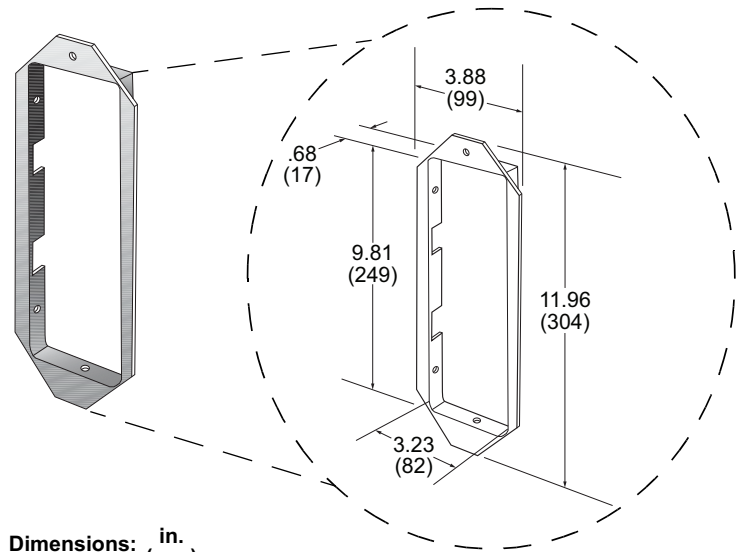


**NOTE:** All dimensions shown are for 10 in. (254 mm) wide duct with flush covers.

The elbow-type cabinet connector is used where surface mounted wall duct is run horizontally on a wall, above a cabinet requiring access from the top. Grommet material is supplied for cable protection around the field-cut openings.

Catalog Number	Weight	
	lb.	kg
RWT10SWEECC	12.0	5.4

Cabinet Connector

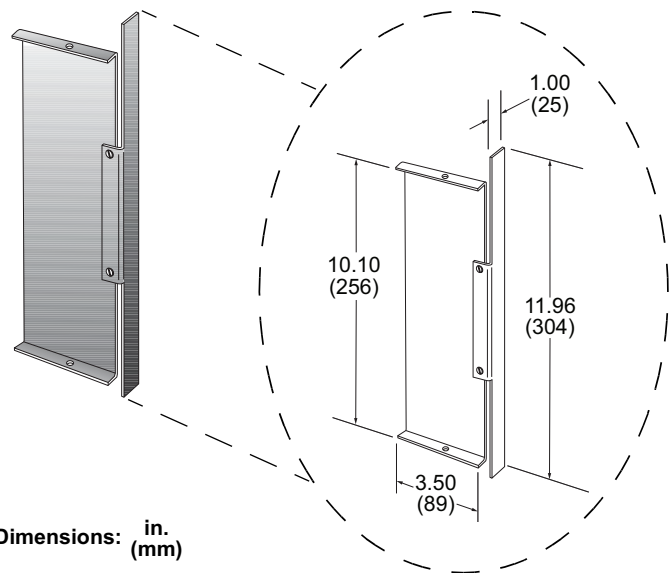


Dimensions: in. (mm)

The cabinet connector connects to the other devices in the same manner as a coupler.

Cabinet Connector in. (mm)	Catalog Number	Weight	
		lb.	kg
6.00 (152) Duct	RWT06CC	0.9	0.4
10.00 (254) Duct	RWT10CC	1.3	0.6
18.00 (457) Duct	RWT18CC	2.4	1.1

End Cap

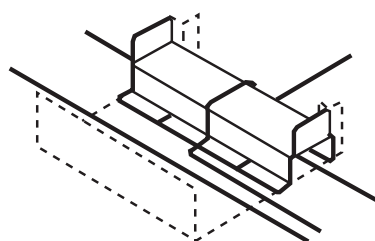


Dimensions: in. (mm)

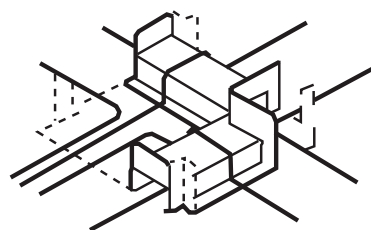
The end cap connects to the other devices in the same manner as a coupler. The end cap has a cover plate extension for use on flush mounted installations. This provides the system with the 1 in. (25 mm) cover plate overlap of the wall material. The cover plate extension is discarded on surface mounted installations.

End Cap in. (mm)	Catalog Number	Weight	
		lb.	kg
6.00 (152) Duct	RWT06EC	1.0	0.4
10.00 (254) Duct	RWT10EC	1.3	0.6
18.00 (457) Duct	RWT18EC	1.8	0.8

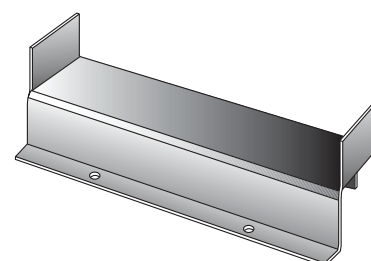
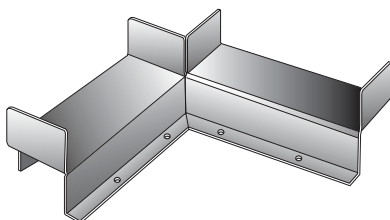
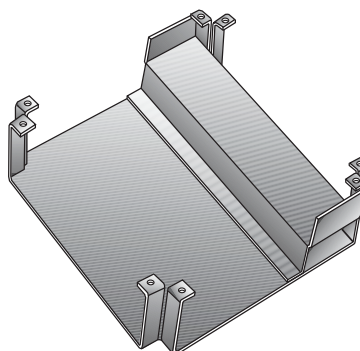
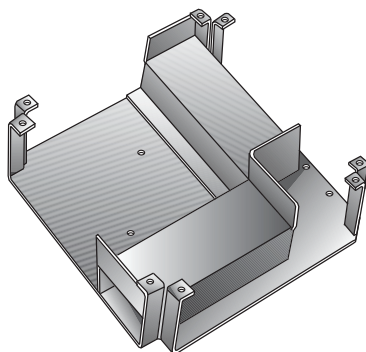
## Tunnel



Straight Through  
Tunnel



90° Elbow  
Tunnel

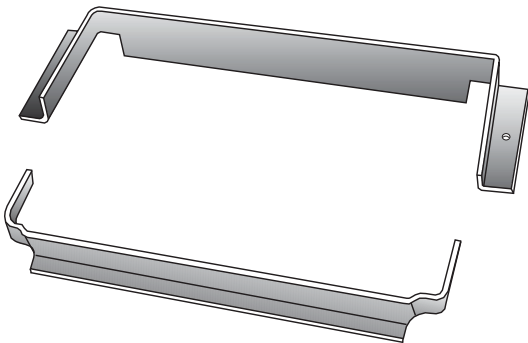


The hole pattern in the coupler locates the straight partition to form a 3 in. (76 mm) wide compartment on either side of the straight length. The 3 in. (76 mm) compartment width is matched by tunnels for horizontal elbows, tees, and crosses. Tunnels are designed to form a 3 in. (76 mm) compartment as well. Hardware for mounting these devices into the fittings are furnished with the tunnels.

Tunnel Type in. (mm)	Catalog Number	Weight	
		lb.	kg
10.00 (254)—Straight Through for Elbows	RWT10ST	2.9	1.3
18.00 (457)—Straight Through for Elbows	RWT18ST	3.8	1.7
10.00 (254)—90° Turn for Elbows	RWT10ET	3.2	1.4
18.00 (457)—90° Turn for Elbows	RWT18ET	5.1	2.3

Elbows

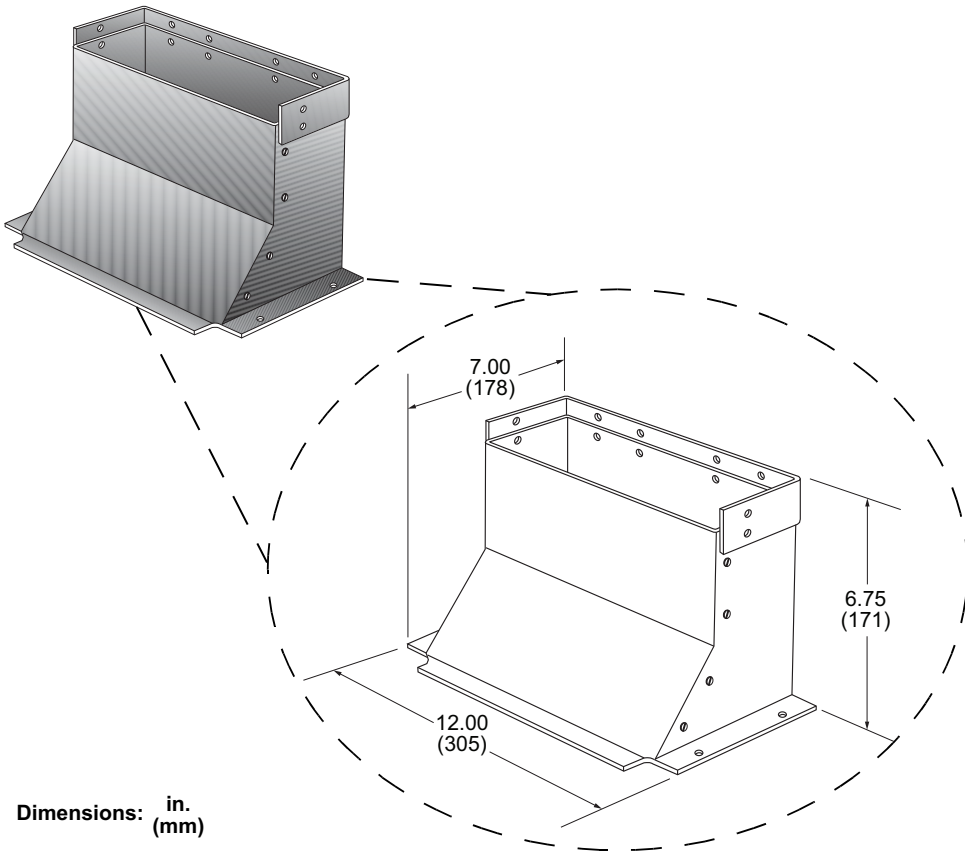
Trench Duct Vertical Elbow Adapter



The adapter elbow is a wall duct coupling device. The elbow is field mounted onto the trench duct, replacing 3.5 in. (89 mm) of a trench duct cover plate. Adapters are available for various combinations of connections.

Adapter Type in. (mm)	Catalog Number	Weight	
		lb.	kg
6.00 (152) Trench Duct to 6.00 (152) Wall Duct	RWT06FTVE06	1.0	0.5
12.00 (305) Trench Duct to 10.00 (254) Wall Duct	RWT10FTVE12	1.1	0.5
12.00 (305) Trench Duct to 18.00 (457) Wall Duct	RWT18FTVE12	1.2	0.5
18.00 (4575) Trench Duct to 18.00 (457) Wall Duct	RWT18FTVE18	1.3	0.6

Sweep Floor Trench Vertical Elbow

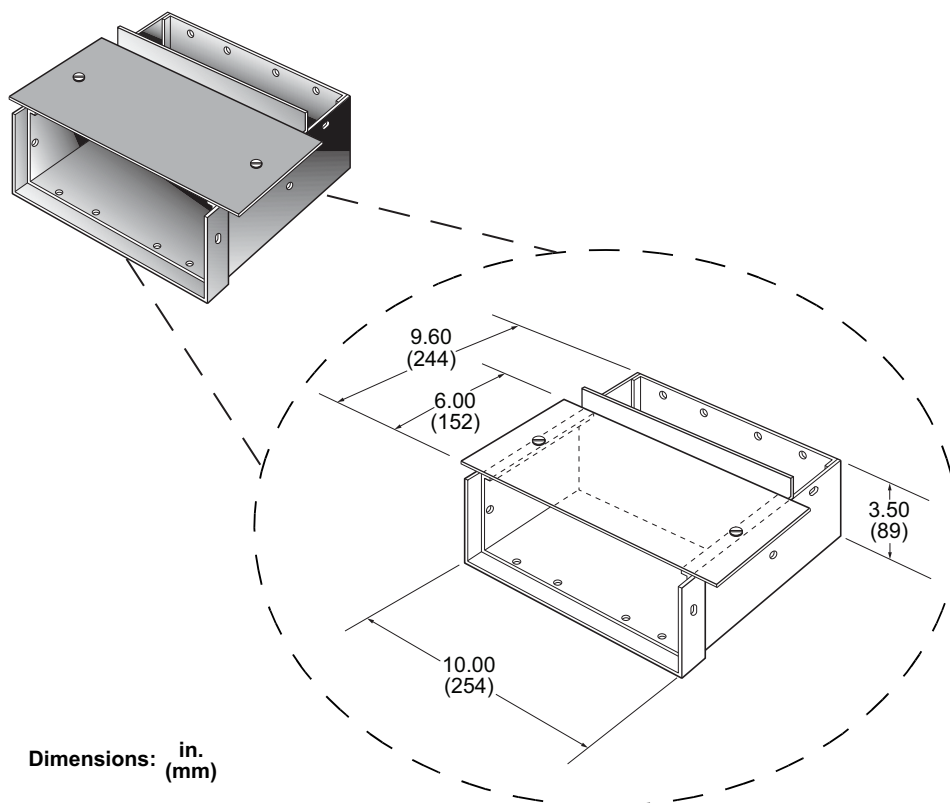


**NOTE:** All dimensions shown are for 10 in. (254 mm) wide duct with flush covers.

The sweep elbow is a complete device with a sweep feature. It is used only where required to accommodate cables with large bending radii. The removable sweep cover extends out 3.5 in. (89 mm) from the floor and wall surfaces.

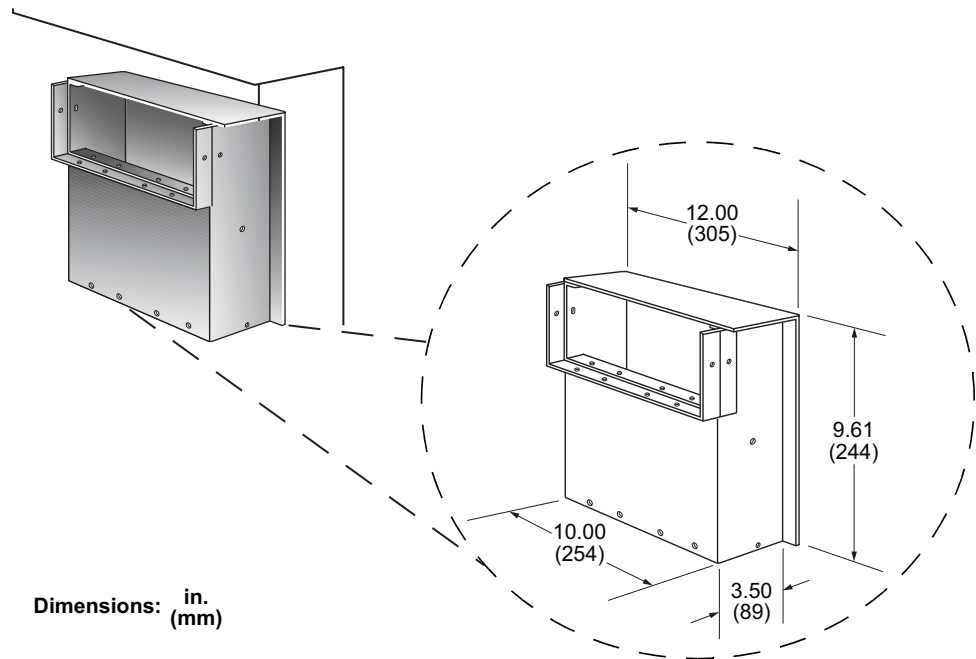
Elbow Type in. (mm)	Catalog Number	Weight	
		lb.	kg
12.00 (305) Trench Duct to 10.00 (254) Wall Duct	RWT10SWFTVE12	7.0	3.2

## Edgewise Elbow (or Cabinet Flange)



Elbow Type in. (mm)	Catalog Number	Weight	
		lb.	kg
6.00 (152) with Flush Covers	RWT06EE	4.9	2.2
10.00 (254) with Flush Covers	RWT10EE	7.5	3.4
18.00 (457) with Flush Covers	RWT18EE	11.1	5.0
6.00 (152) with Surface Covers	RWT06EES	4.8	2.2
10.00 (254) with Surface Covers	RWT10EES	7.4	3.4
18.00 (457) with Surface Covers	RWT18EES	11.1	5.0

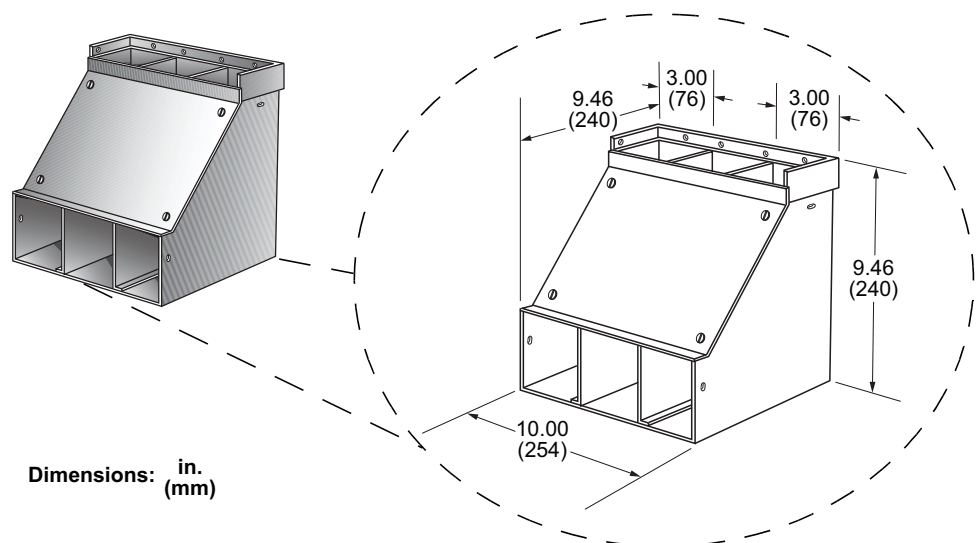
## Reverse Edgewise Elbow



Elbow Type in. (mm)	Catalog Number	Weight	
		lb.	kg
6.00 (152) Duct with Flush Covers	RWT06REE	4.8	2.2
10.00 (254) Duct with Flush Covers	RWT10REE	7.4	3.4
18.00 (457) Duct with Flush Covers	RWT18REE	11.0	5.0
6.00 (152) Duct with Surface Covers	RWT06REES	4.9	2.2
10.00 (254) Duct with Surface Covers	RWT10REES	7.5	3.4
18.00 (457) Duct with Surface Covers	RWT18REES	11.0	5.0

## Sweep Edgewise Elbow

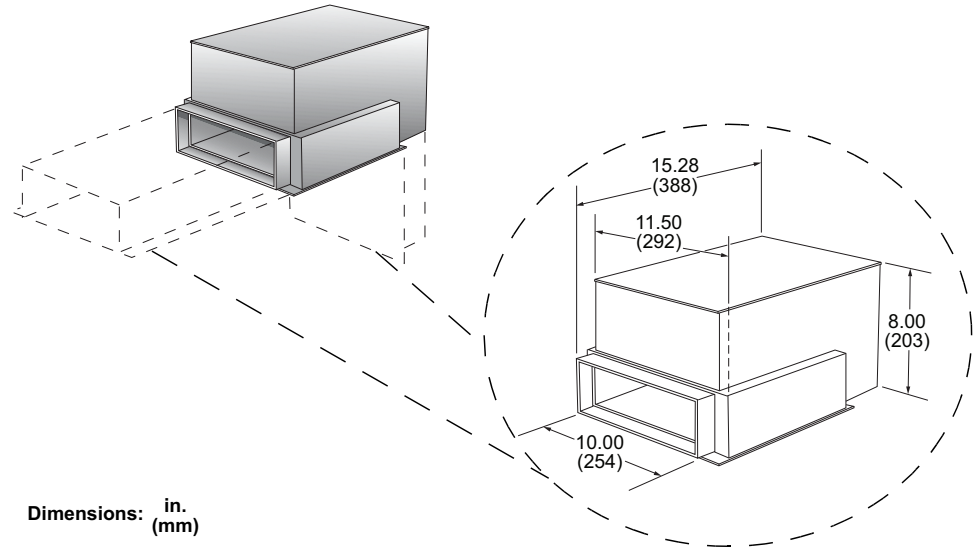
### Surface-Mounted





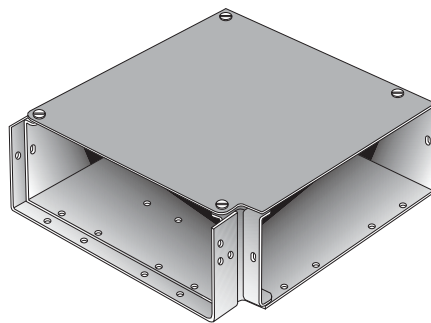
Elbow Type in. (mm)	Catalog Number	Weight	
		lb.	kg
6.00 (152) Duct with Surface Covers	RWT06SSEES	9.5	4.3
10.00 (254) Duct with Surface Covers	RWT10SSEES	11.8	5.4
12.00 (305) Duct with Surface Covers	RWT12SSEES	16.3	7.4

### Flush-Mounted



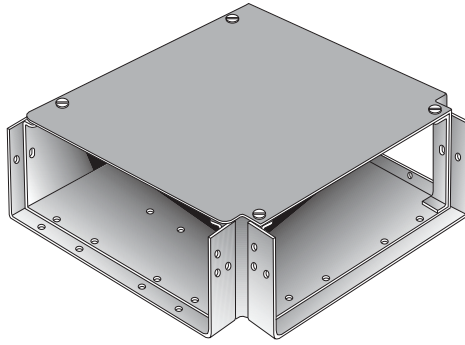
Elbow Type in. (mm)	Catalog Number	Weight	
		lb.	kg
10.00 (254) Duct with Flush Covers	RWT10SFEE	12.0	5.4
18.00 (457) Duct with Flush Covers	RWT18SFEE	16.5	7.5

## Horizontal Elbow (Flush or Surface-Mounted)



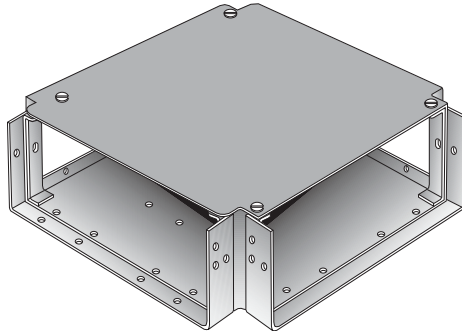
Elbow Type in. (mm)	Catalog Number	Weight	
		lb.	kg
6.00 (152) with Flush Covers	RWT06HE	5.9	2.7
10.00 (254) with Flush Covers	RWT10HE	9.3	4.2
18.00 (457) with Flush Covers	RWT18HE	24.9	11.2
6.00 (152) with Surface Covers	RWT06HES	5.1	2.3
10.00 (254) with Surface Covers	RWT10HES	5.1	2.3
18.00 (457) with Surface Covers	RWT18HES	23.7	10.8

## Tee (Flush or Surface-Mounted)



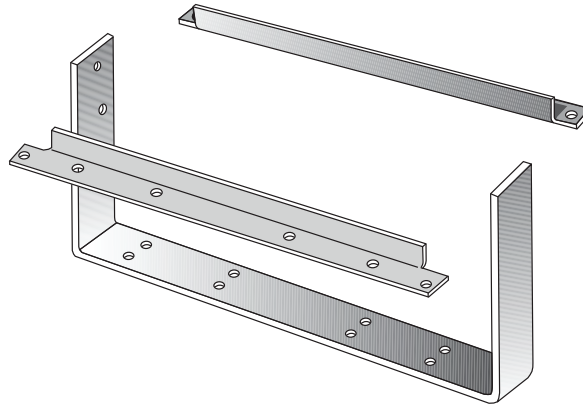
Tee Type in. (mm)	Catalog Number	Weight	
		lb.	kg
6.00 (152) with Flush Covers	RWT06TE	5.3	2.4
10.00 (254) with Flush Covers	RWT10TE	8.5	3.9
18.00 (457) with Flush Covers	RWT18TE	24.1	10.9
6.00 (152) with Surface Covers	RWT06TES	4.9	2.2
10.00 (254) with Surface Covers	RWT10TES	7.3	3.3
18.00 (457) with Surface Covers	RWT18TES	22.9	10.4

## Cross (Flush or Surface-Mounted)



Cross Type in. (mm)	Catalog Number	Weight	
		lb.	kg
10.00 (254) with Flush Covers	RWT10XE	7.8	3.5
18.00 (457) with Flush Covers	RWT18XE	23.4	10.6
10.00 (254) with Surface Covers	RWT10XES	6.2	2.8
18.00 (457) with Surface Covers	RWT18XES	21.8	9.9

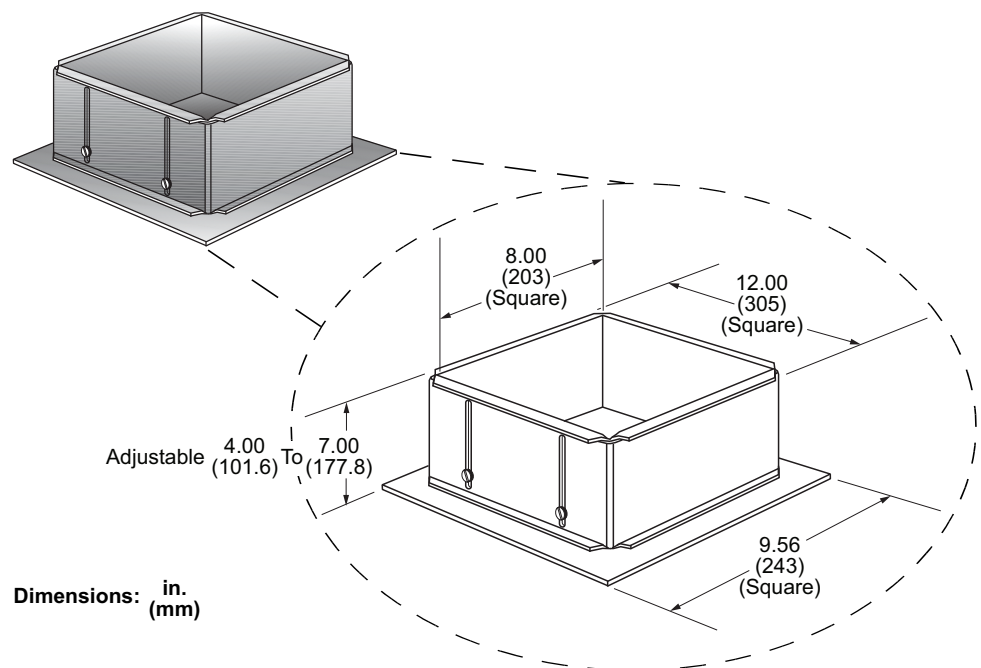
## Edgewise Tee Kit



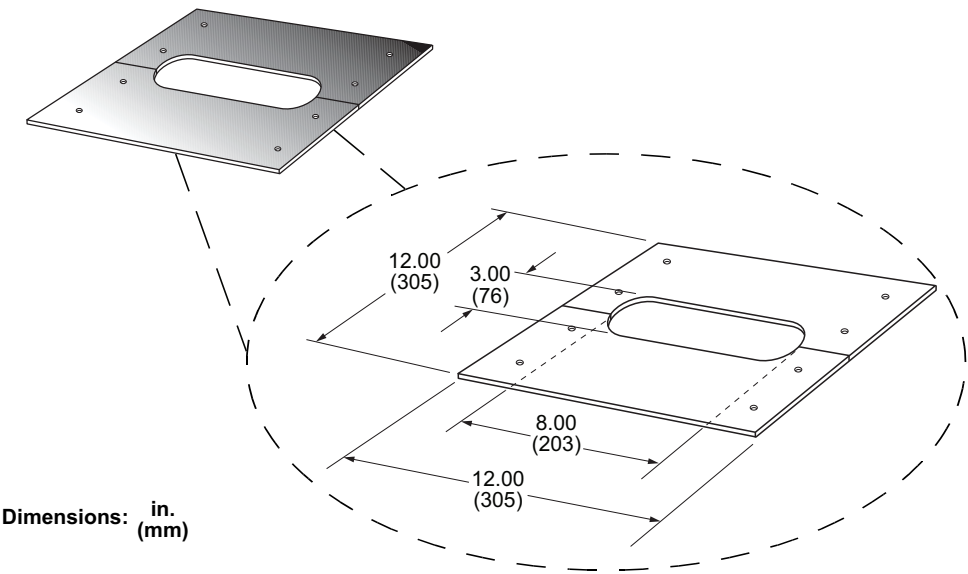
Edgewise Tee Kit Type in. (mm)	Catalog Number	Weight	
		lb.	kg
10.00 (254) Duct	RWT10ETK	1.3	0.6
18.00 (457) Duct	RWT18ETK	2.1	0.9

## Additional Items

### Ceiling Drop-Out



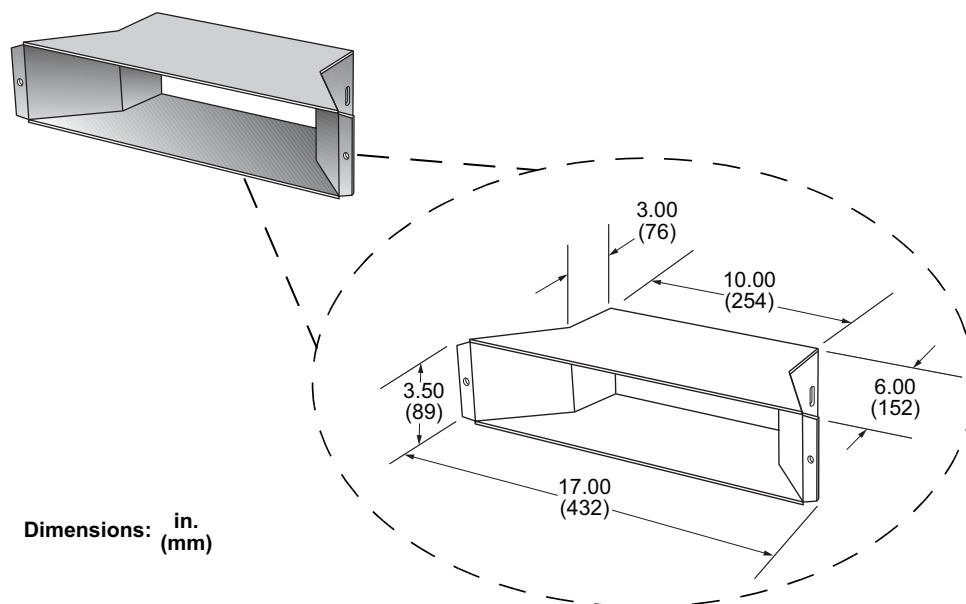
Split Cover



The split cover is 12 inches long and is split down the middle of a 3 x 8 in. (76 x 203 mm) oblong opening. This allows installation of factory-terminated cables. The split covers are field installed where required and come complete with grommets to “bush” the opening to protect the installed cables.

Duct Type in. (mm)	Catalog Number	Weight	
		lb.	kg
6.00 (152) Flush Mounted	RWT06ACP	2.4	1.1
10.00 (254) Flush Mounted	RWT10ACP	3.1	1.4
18.00 (457) Flush Mounted	RWT18ACP	4.8	2.2
6.00 (152) Surface Mounted	RWT06ACPS	2.6	1.1
10.00 (254) Surface Mounted	RWT10ACPS	3.3	1.5
18.00 (457) Surface Mounted	RWT18ACPS	5.0	2.3

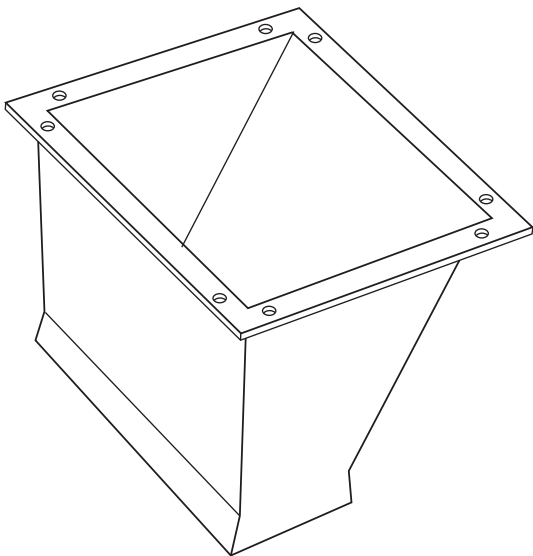
## Flanged Cabinet Connector



The flanged cabinet connector is an alternate method of connecting duct to a panel or cabinet when the application requires spreading of the cables prior to entry.

Connector Type in. (mm)	Catalog Number	Weight	
		lb.	kg
10.00 (254) Flush Mounted	RWT10CUC	8.0	3.6
10.00 (254) Surface Mounted	RWT10CUCS	7.4	3.4

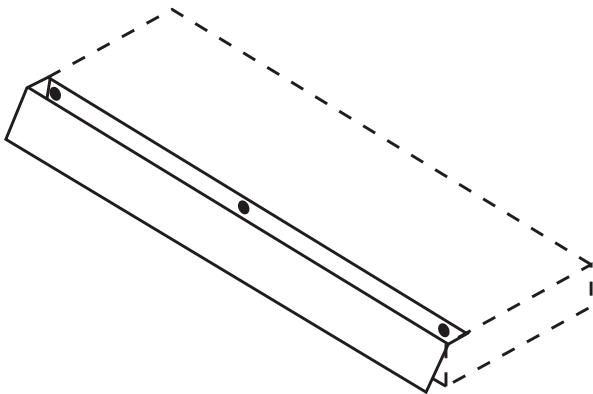
Sweep Edgewise Tee Kit



The sweep edgewise tee kit provides a larger radius surface around which to install cables with long bending radii.

Duct Type in. (mm)	Catalog Number	Weight	
		lb.	kg
10.00 (254) Duct	RWT10SWET	7.0	3.2
18.00 (457) Duct	RWT18SWET	10.0	4.5

Dust Cover



The dust cover keeps dust and debris from collecting on the top surface of horizontally-mounted surface duct.

Dust Cover Length ft. (m)	Catalog Number	Weight	
		lb.	kg
5.00 (1.5)	RWTDCOV60	3.5	1.6



Schneider Electric  
800 Federal Street  
Andover MA 01810  
USA

1-888-778-2733

[www.se.com](http://www.se.com)

As standards, specifications, and design change from time to time, please ask for confirmation of the information given in this publication.

© 1993 – 2024 Schneider Electric. All rights reserved.

5250CT9201