

Wiser Smoke Alarm 240V Square

Device user guide

Information about features and functionality of the device.

05/2023



Legal Information

The Schneider Electric brand and any trademarks of Schneider Electric SE and its subsidiaries referred to in this guide are the property of Schneider Electric SE or its subsidiaries. All other brands may be trademarks of their respective owners.

This guide and its content are protected under applicable copyright laws and furnished for informational use only. No part of this guide may be reproduced or transmitted in any form or by any means (electronic, mechanical, photocopying, recording, or otherwise), for any purpose, without the prior written permission of Schneider Electric.

Schneider Electric does not grant any right or license for commercial use of the guide or its content, except for a non-exclusive and personal license to consult it on an "as is" basis. Schneider Electric products and equipment should be installed, operated, serviced, and maintained only by qualified personnel.

As standards, specifications, and designs change from time to time, information contained in this guide may be subject to change without notice.

To the extent permitted by applicable law, no responsibility or liability is assumed by Schneider Electric and its subsidiaries for any errors or omissions in the informational content of this material or consequences arising out of or resulting from the use of the information contained herein.

Table of Contents

Safety information	4
Wiser Smoke Alarm 240V Square.....	5
For your safety	5
About the device.....	6
Installing the device	6
Pairing the device	7
Pairing device manually.....	7
Pairing device with auto scan	9
Setting up connection without Wiser Hub.....	10
Interconnecting devices without Wiser Hub	10
Interconnecting standalone devices.....	11
Disconnecting a secondary device	14
Common questions on interconnection setup.....	15
Testing the device	16
Configuring the device	17
Changing the device icon	17
Renaming the device	18
Changing the device location	18
Using the device.....	19
Checking the device history	19
Setting LED brightness.....	20
Test alarm reminder	22
Silencing the device	23
Snoozing the device alerts	24
False alarm	24
Creating an automation	25
Removing the device from the Wiser app.....	30
Resetting the device manually	30
Maintenance and cleaning.....	31
LED Indications	32
Troubleshooting	33
Technical Data	33
Compliance	34
Compliance information for Green Premium products.....	34
Trademarks.....	34

Safety information

Important information

Read these instructions carefully and look at the equipment to become familiar with the device before trying to install, operate, service, or maintain it. The following special messages may appear throughout this manual or on the equipment to warn of potential hazards or to call attention to information that clarifies or simplifies a procedure.



The addition of either symbol to a “Danger” or “Warning” safety label indicates that an electrical hazard exists which will result in personal injury if the instructions are not followed.



This is the safety alert symbol. It is used to alert you to potential personal injury hazards. Obey all safety messages that accompany this symbol to avoid possible injury or death.

DANGER

DANGER indicates a hazardous situation which, if not avoided, **will result in** death or serious injury.

Failure to follow these instructions will result in death or serious injury.

WARNING

WARNING indicates a hazardous situation which, if not avoided, **could result in** death or serious injury.

CAUTION

CAUTION indicates a hazardous situation which, if not avoided, **could result in** minor or moderate injury.

NOTICE

NOTICE is used to address practices not related to physical injury.

Wiser Smoke Alarm 240V Square



CLP599WSA

For your safety

⚡⚠ DANGER

HAZARD OF ELECTRIC SHOCK, EXPLOSION, OR ARC FLASH

Safe electrical installation must be carried out only by skilled professionals. Skilled professionals must prove profound knowledge in the following areas:

- Connecting to installation networks
- Connecting to several electrical devices
- Laying electrical cables
- Safety standards, local wiring rules and regulations

Failure to follow these instructions will result in death or serious injury.

NOTICE

EQUIPMENT INSTALLATION HAZARD

- Always operate the product in compliance with the specified technical data.
- Keep the installation instruction for the life of the product.

Failure to follow these instructions can result in equipment damage.

⚠ WARNING

SEALED BATTERY HAZARD

Do not recharge, disassemble or incinerate the battery.

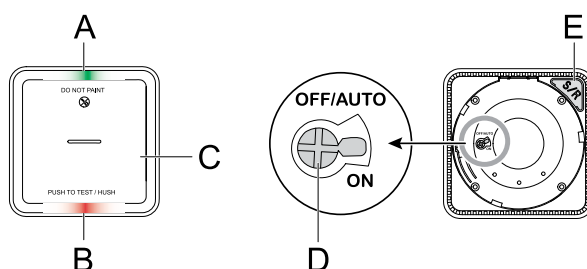
Failure to follow these instructions can result in death, serious injury, or equipment damage.

About the device

The Wiser Smoke Alarm 240 V Square (device) uses a photoelectric sensor to detect smoke generated by fire and a temperature sensor that detects heat caused by rapid increase in temperature. It also includes a backup battery that allows the device to work if the power supply is disconnected. When connected to the Wiser system, the device will send notifications via the Wiser app.

Operating elements

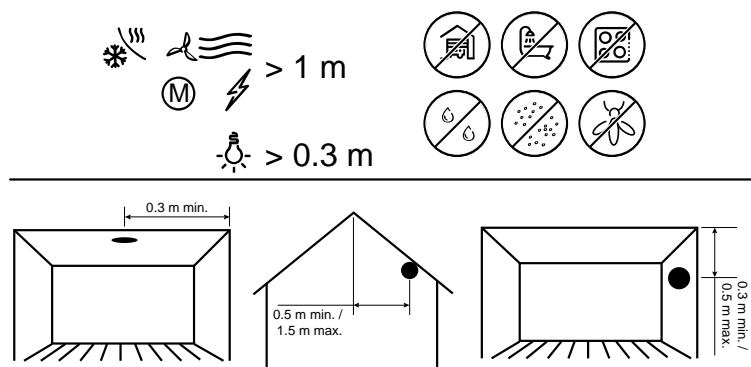
- A. Status LED (Amber, Green and Red LED)
- B. Standby LED (Red LED)
- C. Test/Hush button
- D. Power switch: OFF/Auto*
- E. Setup/Reset button



***OFF/Auto:** In this position the device is turned off. When the device is mounted on the mounting base, it turns on automatically. When it is removed, it turns off automatically.

Installation location

- Smoke Alarm can be installed on a flat/inclined ceiling, or on the wall.
- Do not install smoke alarms near windows, doors, or ducts.
- Avoid paint, stickers, or other decorations.



Installing the device

Refer to the installation instruction supplied with this product.

See Wiser Smoke Alarm 240 V.

Pairing the device

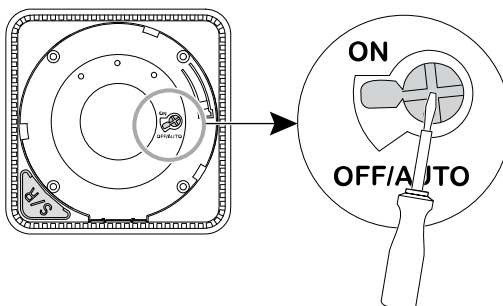
Using the Wiser app, pair your device with the **Wiser Hub** to access and control the device. You can either add the device manually or do an auto-scan to pair it.

IMPORTANT: Do not mount the device before the pairing. The Setup/Reset button (Zigbee) and power switch are located on the rear side of the device.


NOTE: When multiple smoke alarms are paired with same Wiser Hub, an 433MHz radio frequency (RF) interconnection is automatically created between smoke alarms.

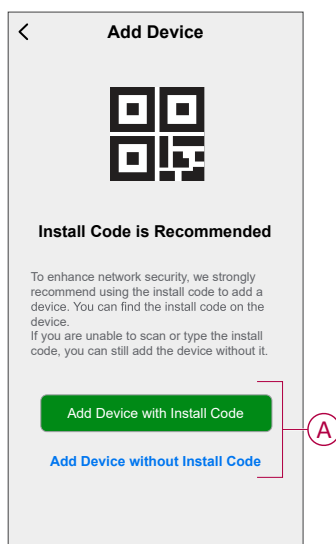
Pairing device manually

1. Locate the power switch on the rear side of the device. Use a screwdriver to turn the power switch to **ON** position.



NOTE: When the device is mounted on a wall or on the ceiling, the power switch is automatically turned **ON**.

2. In Wiser app **Home** page, tap **+**.
3. Tap  and select the required **Wiser Hub** on the slide-up menu.
4. Select any one of the options to add device (A):
 - **Add Device with Install Code**
 - **Add Device without Install Code**

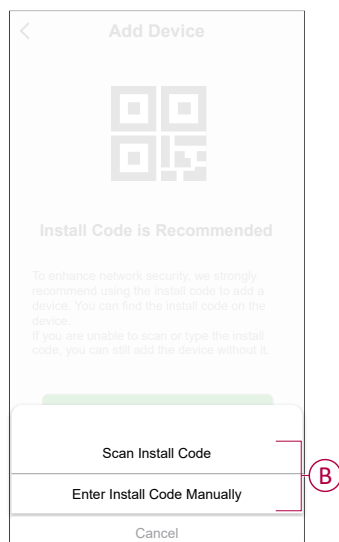


TIP: It is highly recommended to pair the device with Install code.

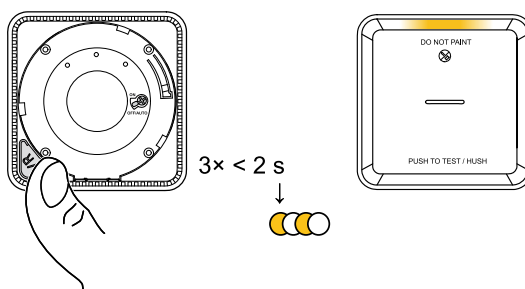
5. To pair the device with an install code,, tap **Add Device with Install Code** to display the slide-up menu. Select any one of the options (B):
 - **Scan Install Code:** you can scan the device for the an install code.
 - **Enter Install Code Manually:** you can manually enter the install code from the device.

TIP: Install code is located on the rear side of the device.

After scanning or entering the install code, proceed to **Step 7**.

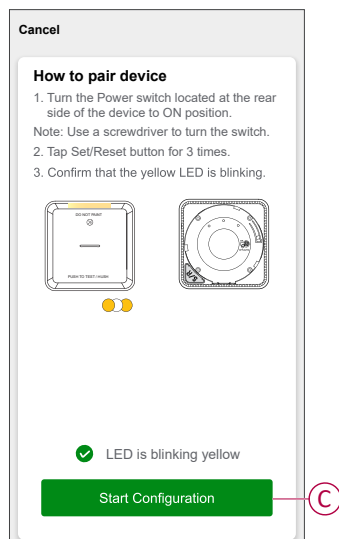


6. To pair the device without install code, tap **Add Device without Install Code**.
7. Short press the Setup/Reset button 3 times.

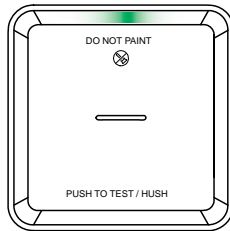


The LED blinks yellow.

8. In the app, select **LED is blinking yellow** and tap **Start Configuration** (C).



- After a few seconds, a solid green LED indicates that the device has been successfully paired.



- Once the device is paired in the app, tap **Done**.

Pairing device with auto scan

Pairing the device with auto scan automatically discovers the device when the corresponding device is powered on.

- Locate the power switch on the rear side of the device. Use a screwdriver to turn the power switch to **ON** position.
- On the **Home** page, tap **+ > Auto scan > Confirm**.
- Enable permissions to **Access location** and **Wi-Fi** for scanning device and tap **Start scanning**.

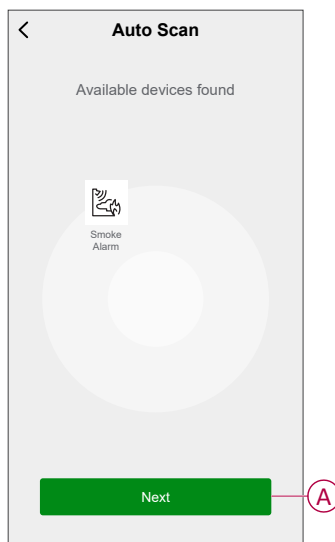
NOTE: If you have multiple hubs, do Step 4 or proceed to Step 5.

- Tap **Select hub** and select the Wiser hub from the slide-up menu.
- Press the Setup/Reset button 3 times and wait for a few seconds until the device search is complete..

The LED blinks yellow.

TIP: If you want to pair multiple devices at once, perform step 5 on each device and wait for a few seconds for them to be detected.

- Tap **Next (A)** and select **Smoke Alarm**.



- Once the device is added successfully, tap **Done**.

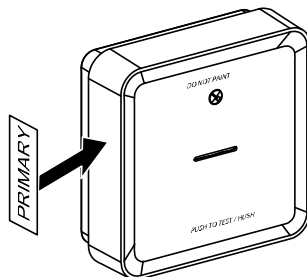
Setting up connection without Wiser Hub

Interconnecting devices without Wiser Hub

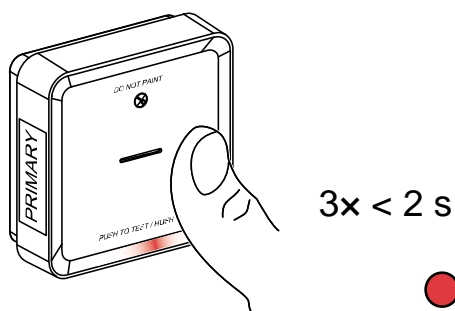
The smoke alarms (devices) can be connected directly to each other via RF connections even without a Wiser Hub network.

IMPORTANT: Turn the power switch to **ON** position on all the devices.

1. Identify a device and mark it as **Primary** with a label supplied. Other devices are considered as **Secondary**.



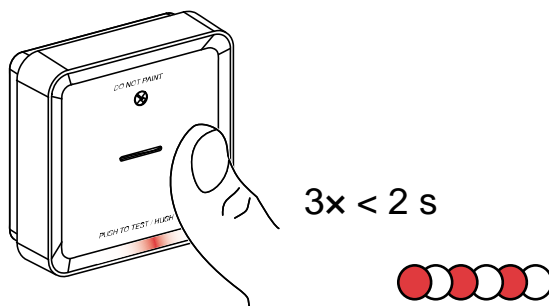
2. Short press the Test/Hush button 3 times within 2 s on the primary device.



The Standby LED turns on for 30 s once it is in pairing mode.

3. Identify a Secondary device and short press the Test/Hush button 3 times within 2 s.

The Standby LED blinks 3 times on both Primary and Secondary devices indicating a successful RF connection. Then on the Primary device, the Standby LED again turns on for 30 s



Repeat the step 3 on all Secondary devices.

NOTE: To exit from pairing mode, short press ($< 0,5$ s) the Test/Hush button 3 times on the Primary device. The Standby LED turns off indicating that the Primary device is not in pairing mode.

Interconnecting standalone devices

The smoke alarm is compatible with other CLIPSAL smoke alarms and can be paired with Wiser smoke alarm via RF connection.

Wired connection

You can setup a wired connection between Wiser and CLIPSAL Smoke alarm. The following devices are compatible with wired connections: 755WSA, 755PSMA4, 755RLPSMA4, and, 755PFM4.

- A common neutral must be used on all wired devices.
- No additional configuration is required if all devices are wired in a group.
- Wiring with 755RFB2 is not recommended.

NOTE: For more information on wiring, refer instruction sheet.

IMPORTANT: Verify that the interconnections are correct, perform an interconnection test on all smoke alarms after installation. Refer testing the interconnected device(s).

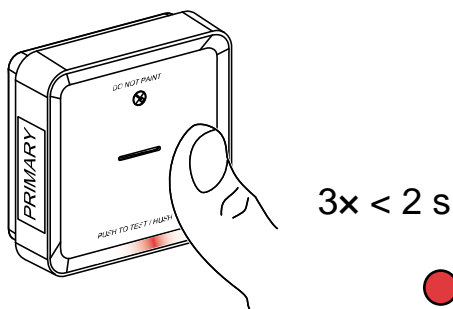
Wireless connection

You can setup a wireless connection between Wiser and CLIPSAL Smoke alarm. The following devices are compatible with wireless connections: CLP599WSAL, 755WSA, 755LPSMA4, and, 755RFB2.

1. Select a device as primary and paste **Primary** label on the device. Other standalone devices must be considered as **Secondary**.

NOTE: If devices are connected to the Wiser hub, identify one as primary and consider the rest as secondary.

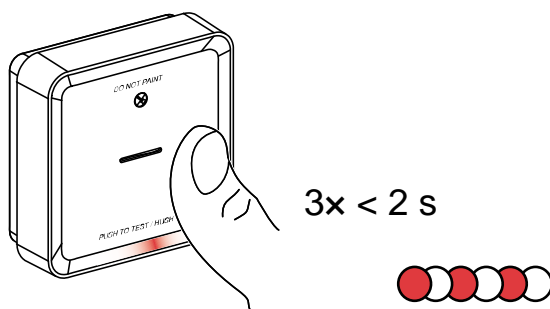
2. On the primary device, short press the Test/ Hush button 3 times in 2 s. The Standby LED turns Red for 30 s once it is in pairing mode.



3. Depending on the secondary device, perform one of the following:

a. CLP599WSAL Model

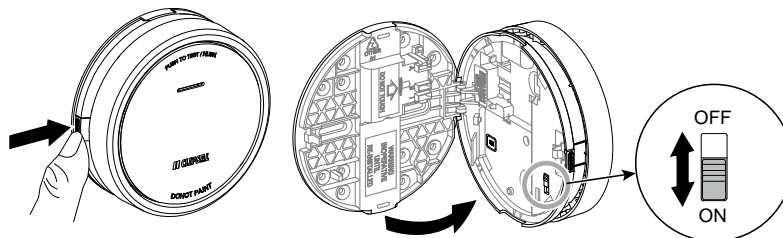
Identify a secondary device and short press the Test/Hush button 3 times within 2 s.



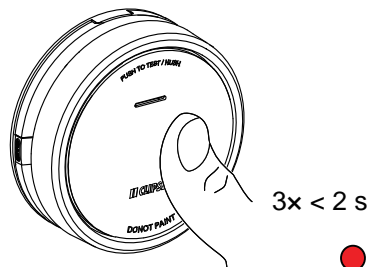
The Standby LED blinks 3 times on both primary and secondary devices indicating a successful RF connection. Then on the primary device, the Standby LED again turns on for 30 s.

b. 755WSA Model

(1) Remove back panel and turn the switch to **ON** position.



(2) While the Standby LED on the primary device is ON for 30 s, on the secondary device, short press the Test/Hush button 3 times in 2 s.

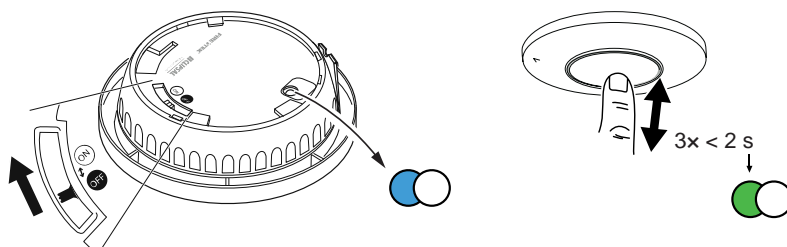


On the primary and secondary devices the Standby LED blinks 3 times. Then the Standby LED on the primary device turns On again for 30 s upon successful RF connection.

(3) Repeat the above steps for other secondary devices.

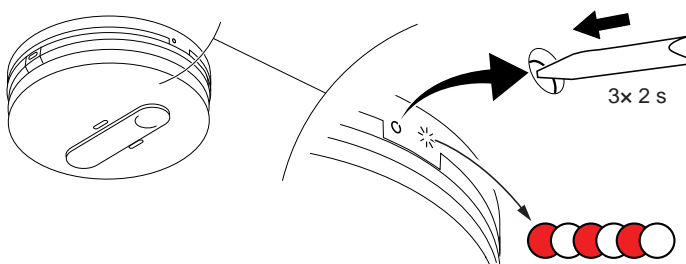
c. 755LPSMA4 Model

- (1) Turn the switch to the **ON** position located at the rear side of the device, the blue LED blinks once.
- (2) While the Standby LED on the primary device is ON for 30 s, on the secondary device, press the Test/Hush button 3 times within 2 s. Network LED blinks green for 3 s.
- (3) The network LED on the secondary device turns On for an additional 3 s.
- (4) Repeat the above steps for other secondary devices.



d. 755RFB2 Model

- (1) While the Standby LED on the primary device is ON for 30 s, on the secondary device, press wireless pairing button 3 times within 2 seconds.
- (2) The LED on the secondary device blinks 3 times indicating successful interconnection.
- (3) Repeat the above steps for other secondary devices.



IMPORTANT: Verify that the interconnections are correct, perform an interconnection test on all smoke alarms after installation. Refer testing the interconnected device(s).

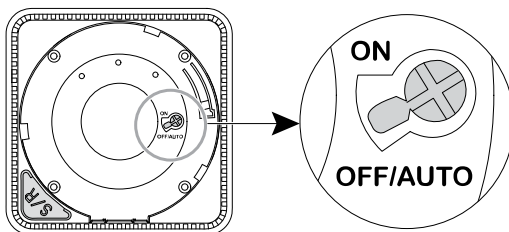
Disconnecting a secondary device

Remove a Secondary device from the mounting base (See "Removing a device from the mounting base in the instruction manual").

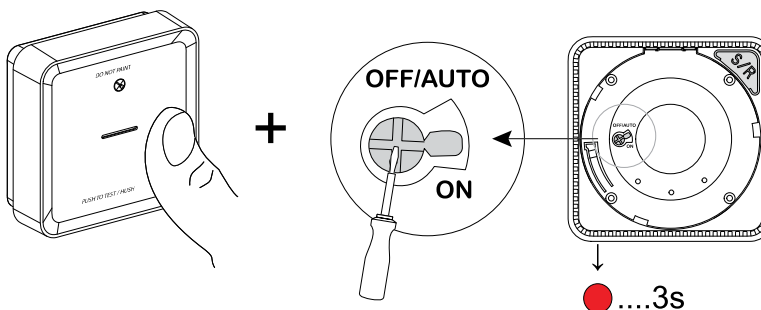
NOTE:

- Do not remove the Primary device.
- Read the following steps before disconnecting a Secondary device.

1. Make sure that the power switch is in OFF/AUTO position.

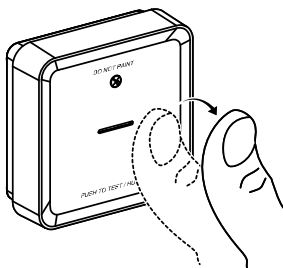


2. Press and hold the Test/Hush button and simultaneously turn the power switch to ON position.

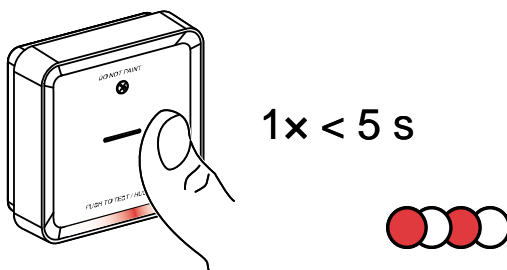


The Standby LED turns on for 3 s.

3. Continue to hold the Test/Hush button until the Standby LED turns off. Then release the Test/Hush button.



4. Short press the Test/Hush button when the Standby LED is on for 3 s.



The Standby LED blinks for 5 s indicating disconnecting of RF interconnection also the Status LED blinks green for 7 times.

IMPORTANT:

- When the Secondary device is successfully disconnected, make sure to turn the power switch to OFF/ AUTO position.
- Test all smoke alarms for interconnection. Refer testing the interconnected device(s)

Common questions on interconnection setup

Scenarios		Required steps for interconnection
I have only Wiser smoke alarms and Wiser Hub.	All smoke alarms to be paired to Wiser Hub.	Follow the steps in Pairing the device to pair all devices to the same Wiser Hub. Once paired, wireless connections are automatically established between the devices. Test all units to make sure interconnection is correct. Refer testing the interconnected device(s) .
	Only one or part of smoke alarms to be paired to Wiser Hub.	<ol style="list-style-type: none"> 1. Pair the selected device(s) to the Wiser Hub according to Pairing the device. 2. Then, select one of the paired Wiser smoke alarms as Primary to connect all others according to Interconnecting devices without Wiser Hub. <p>Once the above steps are completed, a wireless connection can be established between all devices. Test all units to make sure interconnection is correct. Refer testing the interconnected device(s).</p>
I have only Wiser smoke alarms without Wiser Hub.		Identify one device as Primary and pair all others according to Interconnecting devices without Wiser Hub . Once paired, wireless connections are automatically established between the devices. Test all units to make sure interconnection is correct. Refer testing the interconnected device(s) .
I have Wiser smoke alarms and standalone 755LPSMA4 / 755RFB2 smoke alarms / RF base but without Wiser Hub.		Identify one device as Primary and pair all others Wiser smoke alarms according to Interconnecting devices without Wiser Hub and standalone 755LPSMA4 / 755RFB2 smoke alarms / RF base according to Interconnecting standalone devices . Once paired, wireless connections are automatically established between the devices. Test all units to make sure interconnection is correct. Refer testing the interconnected device(s) . NOTE: If 755LPSMA4 / 755RFB2 is already installed and paired before, use the Primary unit to pair with all Wiser smoke alarms.
I have Wiser smoke alarms and standalone 755LPSMA4 / 755RFB2 smoke alarms / RF base and Wiser Hub.	All Wiser smoke alarms to be paired to Wiser Hub.	<ol style="list-style-type: none"> 1. Follow the steps in Pairing the device to pair all devices to the same Wiser Hub. 2. Then, select one of the paired Wiser smoke alarms as Primary to connect all 755LPSMA4 / 755RFB2 according to Interconnecting standalone devices. <p>Once the above steps are completed, a wireless connection can be established between all devices. Test all units to make sure interconnection is correct. Refer testing the interconnected device(s). NOTE: If 755LPSMA4 / 755RFB2 are already installed and paired before, reconnect by pairing them again.</p>
	Only one or part of Wiser smoke alarms to be paired to Wiser Hub.	<ol style="list-style-type: none"> 1. Pair the required one or part of Wiser smoke alarms to same Wiser Hub according to Pairing the device. 2. Then, select one of the paired Wiser smoke alarms as Primary to connect all 755LPSMA4 / 755RFB2 according to Interconnecting devices without Wiser Hub and Interconnecting standalone devices for 755LPSMA4 or 755RFB2 smoke alarms or RF bases. <p>Once the above steps are completed, a wireless connection can be established between all devices. Test all units to make sure interconnection is correct. Refer testing the interconnected device(s). NOTE: If 755LPSMA4 / 755RFB2 are already installed and paired before, reconnect by pairing them again.</p>

Testing the device

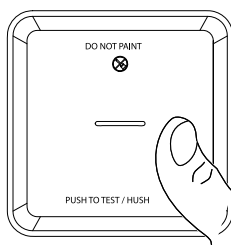
The device has a test mode that helps ensure the proper operation of the device. It is recommended to test the device once a month. If the device is installed in a mobile home, it is recommended to test the device weekly and before every journey.

NOTE: Using Wiser app you can set the monthly reminder for test alarm in settings, page 20.

Testing the individual device

IMPORTANT: Test the device once a month to ensure proper operation.

Press the Test/Hush button on each device for more than 3 s until an alarm sounds off. If the test alarm does not sound, then the device is not connected to power supply.

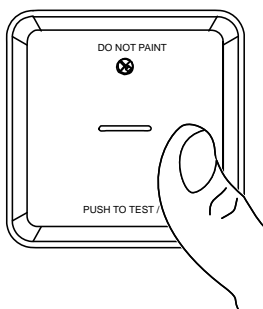


1x > 3 s

Testing the interconnected device(s)

It is possible to test all the devices simultaneously in an interconnected network with one operation.

1. Select any interconnected device.
2. Press and hold the Test/Hush button for more than 18 s until an alarm goes off on all interconnected devices.



1x > 18 s



If there is no alarm triggered on the interconnected devices, make sure that the wireless interconnection setup is correct. Also the distance between each device is within the specification.

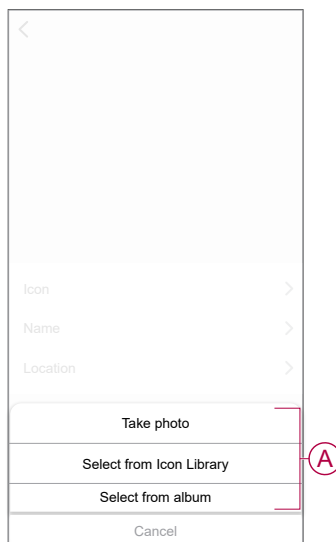
NOTE: The triggered alarm on the interconnected devices remains for a longer time even if you release the Test/Hush button.

Configuring the device

Changing the device icon



You can change the device icon using the Wiser app.

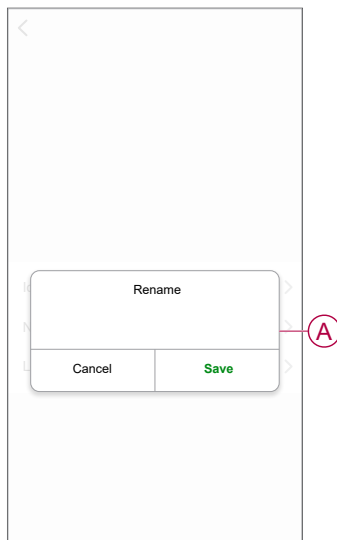
1. On the **Home** page, select the device for which you wish to change the icon.
2. At the top-right corner of the screen, tap .
3. Tap edit  next to the device name.
4. Tap **Icon** to view the menu.
5. In the slide-up menu, select any one of the following (A) to change the device icon:
 - **Take photo** - allows you to take a photo with your device camera.
 - **Select from Icon Library** - allows you to select an icon from the app library.
 - **Select from Album** - allows you to select a photo from the mobile gallery.



Renaming the device



You can rename the device using the Wiser app.

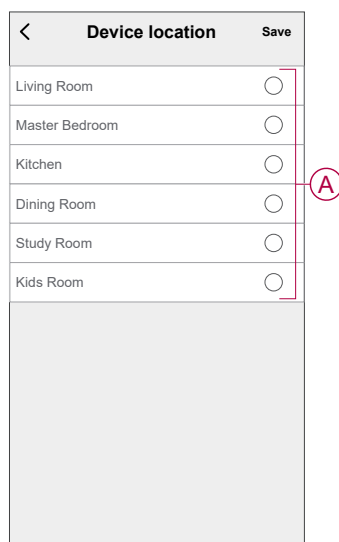
1. On the **Home** page, select the device for which you wish to rename.
2. At the top-right corner of the screen, tap .
3. Tap edit  next to the device name.
4. Tap **Name**, enter the new name (A) and then tap **Save**.



Changing the device location

You can change the device location using the Wiser app.

1. On the **Home** page, select the device for which you wish to change the location.
2. At the top-right corner of the screen, tap .
3. Tap edit  next to the device name.
4. Tap **Location**.
5. Select the desired location from the list (A) and then tap **Save**.



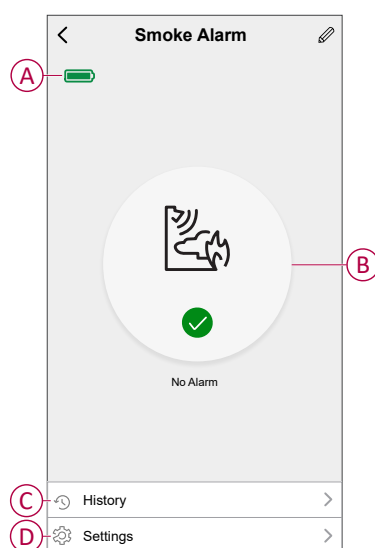
Using the device

The Control Panel of the smoke alarm allows you to view the current state of the device and allow you to access the history and settings.

On the **Home** page, tap **All devices** > **Smoke Alarm** to access the control panel.

On the Smoke Alarm control panel page, you can see the following:

- Battery level (A)
- Current state of the device (B)
- History, page 19 (C)
- Settings (D) : LED brightness settings, page 20 and Test alarm reminder, page 22

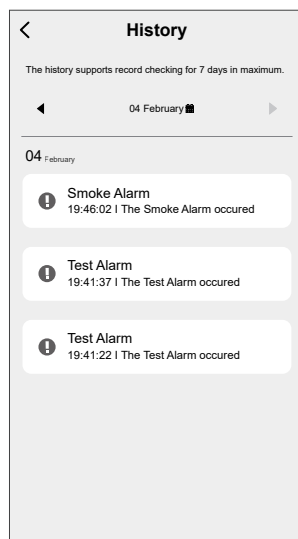


Checking the device history

Using the Wiser app, you can monitor the smoke detection by accessing the device history.

1. On the **Home** page, tap **All devices** > **Smoke Alarm**.
2. On the device control panel page, tap **History**.

3. In the **History** page, you can see the date, time, and type of alarm detected.



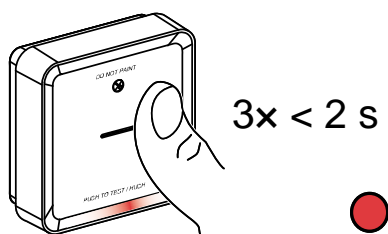
NOTE: The history supports record checking for 7 days maximum.

Setting LED brightness

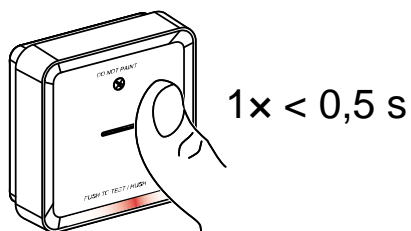
You can change the LED brightness to minimum and maximum manually or by using Wiser app.

Changing the LED brightness manually

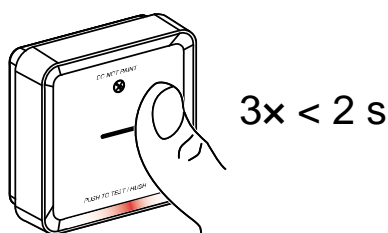
1. When the device is in standby mode, short press the test/hush button 3 times within 2 s.



2. When the Red LED is On, short press the Test/Hush button to switch between Min. and Max. LED brightness.

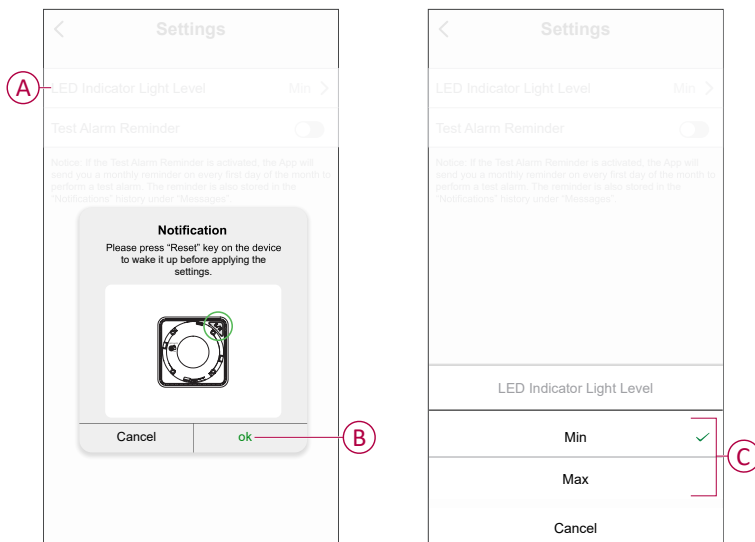


3. Again short press the Test/Hush button 3 times within 2 s to store the adjusted brightness level. Otherwise, you can wait 30s for the standby LED to turn off, then the brightness level will be saved.



Changing the LED brightness using app

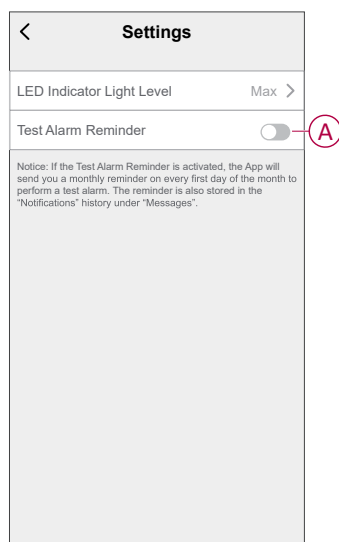
1. On the **Home** page, tap **All devices > Smoke Alarm**.
2. On the device control panel page, tap **Settings**.
3. Tap on **LED Indicator Light Level (A)**.
4. Follow the settings mentioned in the pop-up notification, then tap **Ok (B)**.
5. Select Min or Max indicator level (C).



Test alarm reminder

You can set a reminder for the test alarm in the Wiser app.

1. On the **Home** page, tap **All devices > Smoke Alarm**.
2. On the device control panel page, tap **Settings**.
3. Tap the Test Alarm Reminder toggle switch (A) to turn on the reminder.



NOTE: If the test alarm reminder is enabled, the app sends a monthly reminder to perform a test alarm on the first day of every month.

The reminder is also stored in the **Notification**  history under **Messages**.

Silencing the device

Hush the smoke alarms

During an alarm event, first identify the smoke alarm/s that detected smoke, these will have Red LEDs blinking. Then short press the Test/Hush button on the device to stop the alarm.

IMPORTANT: In hush mode, the device will not detect smoke/high temperature for 10 minutes. After this time the device resumes to normal operation. During this time, the Standby LED blinks once every 8 s.

For instance, if smoke is detected and the device is set to hush mode, high-temperature detection will still be active.

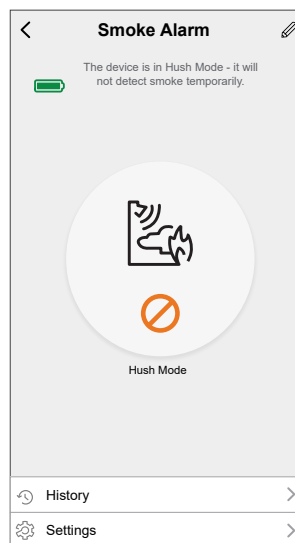
or

If high temperature is detected and then device is set to hush mode, smoke detection will still be active.

In the event that smoke and high temperature are both detected at the same time, and the device is set to hush mode, then both smoke and high temperature detection will not work for the next 10 minutes.

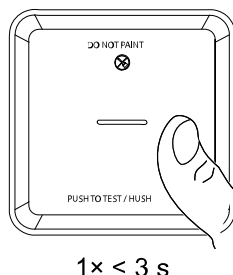
In an interconnected group, if more than one device has blinking Red LEDs and an active alarm, short press the Test/Hush button on all devices. All interconnected devices stop alarming within 5 to 10 s.

NOTE: Wait for 10 minutes before performing any test to avoid malfunctioning of the device. Once the device is set to Hush Mode the status can be checked in Wiser app.



Temporarily disabling smoke detection

To temporarily disable the smoke detection of a device, short press the Test/Hush button once when the device is in Standby mode. The device will not detect smoke for 10 minutes. During this mode the Standby LED blinks once every 8 s.



NOTE: The temperature sensor remains active even when the smoke detection is disabled.

Snoozing the device alerts

Low Battery

When the battery is low, the Standby LED blinks every 48 s, together with a beep. You can snooze the low battery indication for 10 hours by short pressing the Test/Hush button once.

IMPORTANT: The user must replace the device within 30 days after the first alert.

Fault detection

When a device fault is detected, 2 beeps occur every 48 s together with blinking Standby LED. You can snooze the indication for 10 hours by short pressing the Test/Hush button once.
Refer troubleshooting, page 33.

Alarm memory




In an interconnected group, the Standby LED on the triggered device blinks once every 2 s for 72 hours after the alarm has stopped. This allows the user to identify the device that was triggered by smoke/high temperature. Short press the Test/Hush button once to snooze the blinking LED for 10 hours.

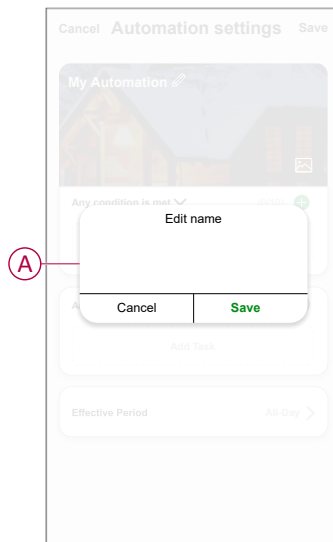
False alarm

In an event of a false alarm in an interconnected group, it is recommended to identify the triggering device(s) by finding the devices with flashing Red LED every 2 s, or by using alarm history log in the app. These devices must be cleaned, serviced or replaced if necessary.

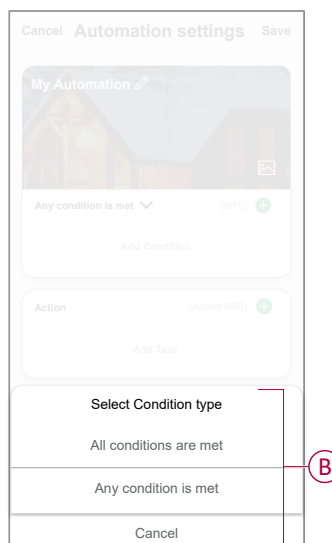
Creating an automation

An automation allows you to group multiple actions that are usually done together, triggered automatically or at scheduled times. By using the Wiser app, you can create automations based on your needs.

1. On the **Home** page, tap the .
2. Go to **Automation** > **+** to create an automation.
3. Tap **Edit name** , enter the name of the automation (A) and tap **Save**.
TIP: You can choose the cover image that represents your automation by tapping .




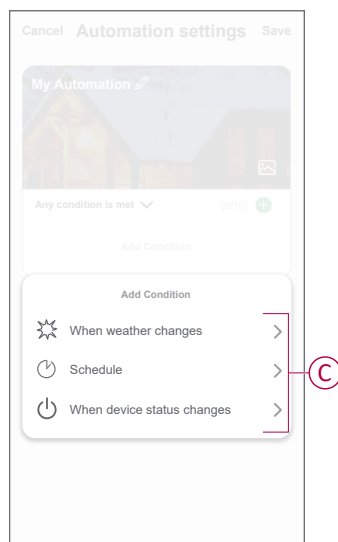
4. Tap **Any condition is met** to select any one of the condition type (B):
 - **All conditions are met**- The automation is triggered when all the conditions are met.
 - **Any condition is met**- The automation is triggered when at least one condition is met.



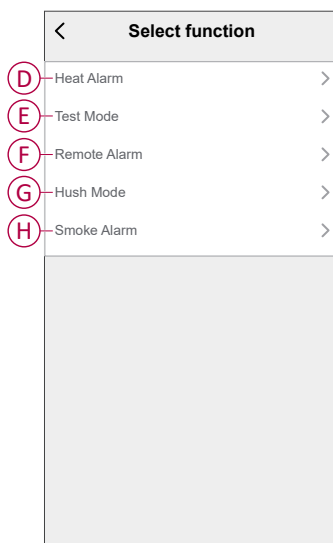
5. Tap **Add Condition** to display the slide-up menu.

6. In the **Add Condition** menu, you can do either or all of the following options (C):
- **When weather changes** - Select the various weather settings
 - **Schedule** - Set the time and day
 - **When device status changes** - Select the device and it's function

NOTE: You can add one or more conditions using .




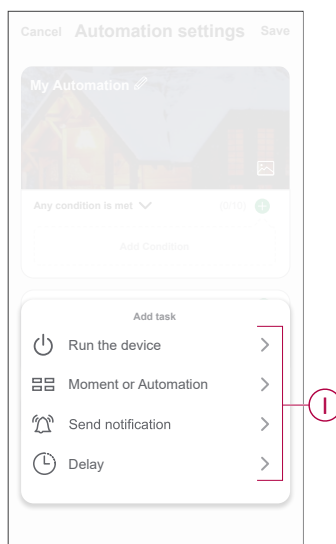
7. Tap **When device status changes > Smoke Alarm** and select either or all of the functions to add in the automation:
- **Heat Alarm** - When the device detects rise in temperature (D)
 - **Test Mode** - When the device is in test mode (E)
 - **Remote Alarm** - When the device is triggered by interconnected device (F)
 - **Hush Mode** - When the device is in hush mode (G)
 - **Smoke Alarm** - When the device detects smoke (H)



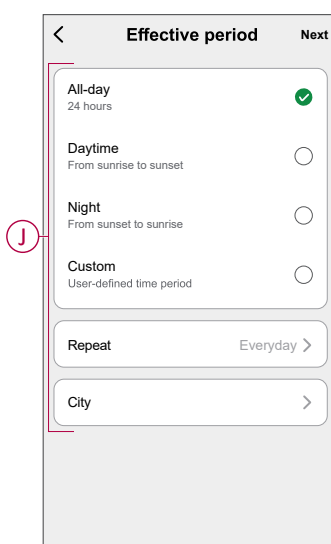
8. Tap **Add task** to display the slide-up menu.

9. In the **Add task** menu, you can do either or all of the following options (I):
- **Run the device**- Select the devices that you want to triggered.
 - **Moment or Automation**- Select the moment which you want to trigger or select the automation that you want to enable or disable.
 - **Send notification**- Turn On notification for the automation.
 - **Delay** - Set the delay time.

NOTE: You can add one or more actions using .



10. Tap on Effective period to set the time range for the automation. You can select any one of the following (J):
- **All-day - 24 hours**
 - **Daytime - From sunrise to sunset**
 - **Night - From sunset to sunrise**
 - **Custom - User defined time period**





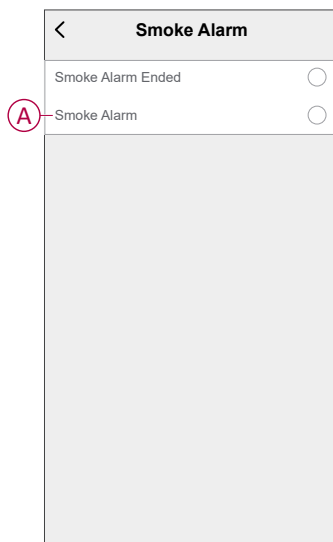
11. Set all the actions and conditions and than tap **Save**.

Automation is now available under **Automation** tab. Use toggle switch to enable/disable automation.

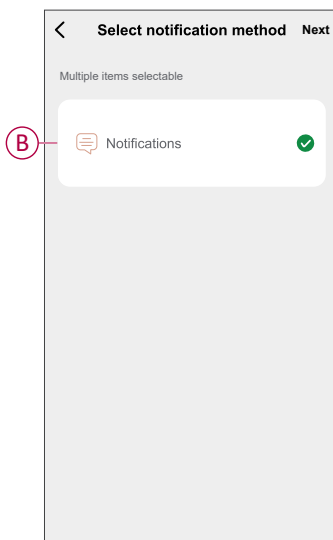
Example of an automation

This demonstration shows you how to create an automation to get notification on your app when the smoke is detected.

1. Go to **Automation** > **+** to create an automation.
2. Tap **Edit name** , enter the name of the automation and tap **Save**.
TIP: You can choose the cover image that represents your automation by tapping .
3. Tap **Add Condition** > **When device status changes** > **Smoke Alarm**.
4. In **Select function** menu tap on **Smoke Alarm** > **Smoke Alarm (A)**.

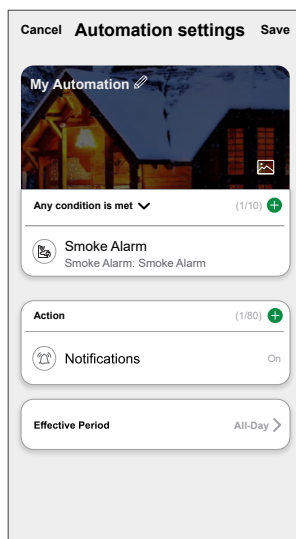


5. Tap **Add task** > **Send Notification** and select **Notifications (B)**.




6. Tap **Next**.

7. In the **Automation Settings** page, tap **Save**.




Once the automation is saved, it is visible on the **Automation** tab. You can tap the toggle switch on the automation to enable it.

Push notification will appear on the screen when the automation is triggered. You can also tap on  to access the notification history.

Editing an automation

1. On the **Automation** tab, locate the automation you want to edit and tap ●●●.
2. On the **Edit** page, you can tap each item (such as dimmer, shutter, delay, temperature, etc.) to change the settings.

TIP:

- You can add one or more condition or actions using .
- To delete an existing condition or action, slide each item towards left and tap **Delete**.


Deleting an automation

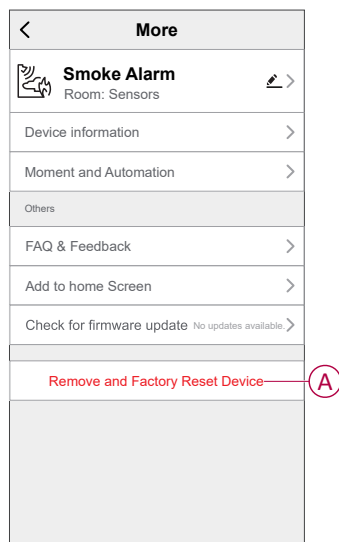
1. On the **Automation** tab, locate the automation that you want to delete and then tap ●●●.
2. Tap **Delete** and then tap **Ok**.

NOTE: After deleting an automation, the device action can no longer be triggered.

Removing the device from the Wiser app

You can remove a device from the device list using the Wiser app,

1. On the **Home** page, tap **All devices** > **Smoke Alarm**.
2. Tap  to display more details.
3. Tap **Remove and Factory Reset Device** (A) and tap **Confirm**.



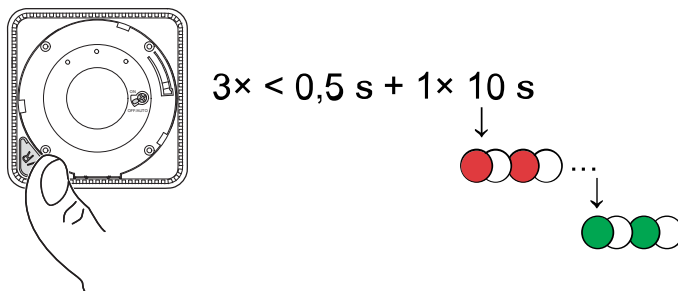
TIP: Alternatively, you can tap and hold on the **Smoke Alarm** on the **Home** page to remove the device.

NOTE: By removing the device, you will reset the device. If you still have a problem with the reset, then refer to [resetting the device](#), page 30.

Resetting the device manually

Short press (< 0,5 s) the Setup/Reset button 3 times and then long press the Setup/Reset button once for >10 s to reset the device to factory default mode.

IMPORTANT: All configuration data, user data and network data are deleted.



Maintenance and cleaning

A monthly inspection is recommended to help ensure the device is dust, dirt, and insect free. The device can be vacuumed (strongly recommended) or brushed with a soft brush to remove accumulated dust, dirt or kitchen grease. Apply a small amount of insect surface spray to a cloth and wipe around device(s) every 3 to 6 months to mitigate insect ingress.

IMPORTANT:

1. Always test the device after cleaning, for more information refer testing the device, page 16.
2. If necessary refer to the installation instruction for more information about installing the device.

NOTICE



EQUIPMENT MAINTENANCE INSTRUCTIONS

- Test the device regularly to ensure its functionality and the battery is in good condition.
- Replace the device after 10 years from the date of manufacturing.
- Do not open the device casing or repair yourself. There are no serviceable parts inside.



Failure to follow these instructions can result in equipment damage.

LED Indications

Pairing

User Action	LED Indication	Status
Press the Setup/Reset button 3 times	Status LED blinks yellow, once per second. 	Pairing mode is active for 30 seconds. When pairing is completed, status LED glows green for some time before turning Off. 

Resetting

User Action	LED Indication	Status
Press the Setup/Reset button 3 times and hold it for > 10 s.	After 10 s, status LED starts blinking red. 	The device is in reset mode. It is reset to the factory settings after 10 seconds. The device then restarts and the status LED starts blinking green before turning Off. 

Operating

Operating Mode		Standby LED	Alarming Sound	Duration
Normal mode / Standby mode		Blinks every 48 s	OFF	—
Alarm Mode	Local Alarm *	Blinks every 1 s	3 beeps every 4 s	—
	Interconnected alarm	OFF	3 beeps every 4 s	—
Test mode		1 blink every 1 s	3 beeps every 4 s	Until Test/Hush button is released
Wireless interconnection test		OFF	Continuous 3 beeps every 4 s	25 s
Hush mode		Blinks every 8 s	OFF	10 min
Low battery mode		Blinks every 48 s	1 beep every 48 s	End of life: replace smoke alarm
Fault mode		2 blinks every 48 s	2 beeps every 48 s	Until fault has been cleared
Snooze Mode	Low battery	Blinks every 24 s	OFF	10 hrs
	Fault	2 blinks every 24 s	OFF	10 hrs
	Alarm memory	Blinks every 48 s	OFF	10 hrs

NOTE: For all the operating modes, LED blinks Red.

* For local smoke alarms, all red LEDs blink, whereas, for local temperature alarms, only the standby red LED blinks.

Troubleshooting

Issue	Resolution/Action
Device does not produce an alarm sound when tested.	<ol style="list-style-type: none"> 1. Confirm that the power switch is in ON position, or the device is installed correctly. If you are unsure then remove and reinstall the device. 2. Press Test/Hush button until an alarm sound is produced. Do not press consecutively. 3. If the problem persists or if you have questions about the warranty, contact customer care center.
Device beeps and Standby LED blinks every 48 s	Battery may be low or drained. Replace the device.
Device beeps twice and Standby LED blinks every 48 s	<ol style="list-style-type: none"> 1. Clean the device. Refer to Maintenance, page 31 section. 2. If the problem persists or if you have questions about the warranty, contact customer care center.
Device produces alarm sound unexpectedly without smoke or steam or high temperature.	<ol style="list-style-type: none"> 1. Identify the triggered device, indicated by a blinking Standby LED and 3 beeps every 4 s. 2. Press Test/Hush button to pause the alarm sound. The interconnected device stops alarming within 10 s. 3. Clean the device. Refer to Maintenance, page 31. 4. Reinstall the device and test. 5. If the problem persists or if you have questions about the warranty, contact customer care center. <p>IMPORTANT: After an alarm event, the device that has blinking Standby LED every 2 s is the triggered device. Identify the device and follow steps 3 to 5.</p>

Technical Data

Power supply	220-240 VAC, 50 / 60 Hz
Back up battery Life	10 years
Operating Current	≤40 mA
Sensing Type	Photoelectric. This alarm contains NO radioactive material.
Operating Temperature	0 °C to 45 °C
Ambient Humidity	5% to 95%
Cable interconnection	Max. 40 devices
Wireless interconnection	RF+Zigbee, max. 40 devices in one network
Terminal provisions	Active, Neutral, Loop and Interconnect terminals, each accommodates 2 × 1.5 mm ² or 1 × 2.5 mm ²
Operating frequency	Zigbee: 2405 - 2480 MHz RF: 433 MHz
Wireless Range	40m indoor line of sight
Horn Level	85 dB at 3 m
Mounting Type	Mounting on ceiling and wall only
Dimensions (H × W × D)	115 × 115 × 46 mm
Standard	AS 3786: 2014+A1: 2015+A2: 2018
Certification	Zigbee 3.0 RCM Activfire SAI Global

Compliance

Compliance information for Green Premium products

Find and download comprehensive information about Green Premium products, including RoHS compliance and REACH declarations as well as Product Environmental Profile (PEP) and End-of-Life instructions (EOLI).

<https://checkaproduct.se.com/>



General information about Green Premium products

Click the link below to read about Schneider Electric's Green Premium product strategy.

<https://www.schneider-electric.com/en/work/support/green-premium/>



Trademarks

This guide makes reference to system and brand names that are trademarks of their relevant owners.

- Zigbee® is a registered trademark of the Connectivity Standards Alliance.
- Apple® and App Store® are brand names or registered trademarks of Apple Inc.
- Google Play™ Store and Android™ are brand names or registered trademarks of Google Inc.
- Wi-Fi® is a registered trademark of Wi-Fi Alliance®.
- Wiser™ is a trademark and the property of Schneider Electric, its subsidiaries and affiliated companies.

Other brands and registered trademarks are the property of their respective owners.

Schneider Electric (Australia) Pty Ltd
33-37 Port Wakefield Road
Gepps Cross SA 5094
Australia

Customer Care: 13 73 28

www.clipsal.com

As standards, specifications, and design change from time to time,
please ask for confirmation of the information given in this publication.

© 2023 – 2023 Schneider Electric. All rights reserved.

DUG_Smoke alarm AC Square_CLP-00