

# Electrical Asset Life Cycle Management (IEC)

## Streamline Electrical Asset Life Cycle Management to Improve Preventative Maintenance

EcoStruxure Power Digital Application

ESXP2GE011EN-05  
11/2023

EcoStruxure™ Power



# Legal Information

The information provided in this document contains general descriptions, technical characteristics and/or recommendations related to products/solutions.

This document is not intended as a substitute for a detailed study or operational and site-specific development or schematic plan. It is not to be used for determining suitability or reliability of the products/solutions for specific user applications. It is the duty of any such user to perform or have any professional expert of its choice (integrator, specifier or the like) perform the appropriate and comprehensive risk analysis, evaluation and testing of the products/solutions with respect to the relevant specific application or use thereof.

The Schneider Electric brand and any trademarks of Schneider Electric SE and its subsidiaries referred to in this document are the property of Schneider Electric SE or its subsidiaries. All other brands may be trademarks of their respective owner.

This document and its content are protected under applicable copyright laws and provided for informative use only. No part of this document may be reproduced or transmitted in any form or by any means (electronic, mechanical, photocopying, recording, or otherwise), for any purpose, without the prior written permission of Schneider Electric.

Schneider Electric does not grant any right or license for commercial use of the document or its content, except for a non-exclusive and personal license to consult it on an "as is" basis.

Schneider Electric reserves the right to make changes or updates with respect to or in the content of this document or the format thereof, at any time without notice.

**To the extent permitted by applicable law, no responsibility or liability is assumed by Schneider Electric and its subsidiaries for any errors or omissions in the informational content of this document, as well as any non-intended use or misuse of the content thereof.**

AccuSine™, Acti 9™, Altivar™, ASCO™, BlokSeT™, ComPacT™, EcoStruxure™, EnerLin'X™, ETAP™, EVlink™, EvoPacT™, Galaxy™, Harmony™, Iso-Gard™, Masterclad™, MasterPacT™, MicroLogic™, Modicon™, Okken™, PowerLink™, PowerLogic™, PowerPacT™, Power-Zone™, PremSeT™, PrismaSeT™, Schneider Electric™, SM AirSeT™, Square D™, SureSeT™, TeSys™, TransferPacT™, Trihal™, and Vigilohm™ are trademarks and the property of Schneider Electric SE, its subsidiaries, and affiliated companies. All other trademarks (Cyber Sciences™, Hirschmann™) are the property of their respective owners.

# Table of Contents

Overview .....5

    Context of Application .....5

    Application Outcomes .....6

Electrical Architecture .....8

Digital Architecture.....9

System Description..... 10

    Data Flow ..... 10

    Inputs ..... 10

    QR Code Creation ..... 11

    QR Code Scan by the Facility or Maintenance Manager ..... 12

    Outputs..... 12



# Overview

## Context of Application

Traditional methods for managing maintenance of electrical assets such as medium and low voltage switchboards, circuit breakers, busway, and transformers can be cumbersome, complex, and time-consuming. Large amounts of documentation to store and manage as well as asset maintenance schedules (especially in large electrical networks) can lead to unexpected failures and costly unplanned downtime if not properly managed. Digital asset tracking can help facility maintenance teams improve maintenance effectiveness and efficiency.

## Problem to Solve

### The facility and maintenance manager needs to:

- Have electrical asset documentation readily available.
- Improve the effectiveness of maintenance teams to manage and assign tasks for electrical asset maintenance routines.
- Increase the mean-time-between-failures (MTBF), reduce the mean-time-to-repair (MTTR), reduce the total cost of ownership (TCO), and optimize overall asset life cycle.

## Purpose of the Application

### Simplify asset tracking with a digital representation of your equipment:

- Digital repository of asset location and documentation
- Easy access to documentation, drawings, warranty information, etc. using a mobile or desktop application



Switchboard with QR Code®<sup>1</sup> on Front Face

### Plan preventative maintenance

- Standard maintenance plan template per asset

### Receive maintenance notifications

- Receive proactive notifications on mobile phone or desktop application
- Simplify maintenance planning
- Avoid missed maintenance tasks that could lead to failures
- Track maintenance history

1. QR Code is a registered trademark of DENSO WAVE INCORPORATED in Japan and other countries.



Maintenance Status and Location at a Glance

**Easily manage maintenance tasks within facility teams**

- Easily and quickly share tasks with teams
- Provide instructions and guidance to designated service engineer
- Generate event log and report on asset maintenance

**Keep asset information up-to-date**

- Once maintenance has been performed, update documentation, future maintenance tasks, and schedules

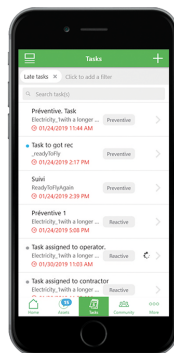
**Share projects and collaborate online**

- Collaborate with professional partners to achieve a common goal
- Easily identify the key stakeholders in charge of the different stages of the project to reduce contradictory or missing information

## Application Outcomes

### Dashboards

- Asset location map
- Overview of asset status
- Summary of team maintenance task status (late, upcoming)



EcoStruxure Facility Expert Maintenance Task List

### Reports

- Editing and automatic storage of maintenance reports and asset information
- Log of maintenance tasks per asset with late/upcoming maintenance task due dates

EcoStruxure

Facility Expert

Schneider

Electric

ASSETS SYNTHESIS

from 01/01/2018 to 12/31/2018

HP Site Eybens

Logs over the period

Asset	Log description	Date	Status	Duration
HP Site Eybens				
LV Smart Panel Mains HP3				
Heat Pump feeder	Trip Potential cause is overload	01/28/2018	🔴	-
	Trip has been fixed	01/29/2018	🟢	01h00
	Check CB	03/09/2018	🟢	01h00
	Go on site to fix issue	09/11/2018	🟢	-
	Check load	11/12/2018	🟢	00h15
	Check amp rating	11/13/2018	🟢	-
Zone C feeder	Check Heat Pump	11/13/2018	🟢	00h45
	Advanced maintenance - Auxiliaries	01/15/2018	🟢	-
	Advanced maintenance - Chassis	01/15/2018	🟢	-
	Basic maintenance - Breaking unit	01/15/2018	🟢	-
	Advanced maintenance - Chassis	01/28/2018	🟢	01h00
	Basic maintenance - Auxiliaries	01/28/2018	🟢	-
	Basic maintenance - Breaking unit	01/28/2018	🟢	00h30
	Basic maintenance - Chassis	01/28/2018	🟢	-
	Advanced maintenance - Breaking Unit	01/28/2018	🟢	00h15
	Advanced maintenance - Control unit	01/28/2018	🟢	01h00
	Advanced maintenance - Power connection	01/28/2018	🟢	00h15

Summary report from 01/01/2018 to 12/31/2018

Generated by EcoStruxure Facility Expert on 05/03/2019 - Facility Report

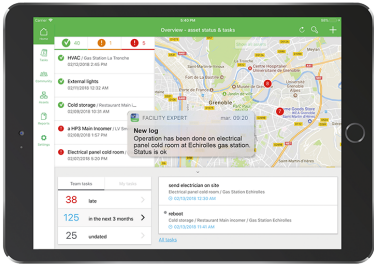
Facility Expert / Schneider Electric

4/6

Asset Maintenance Report

Notifications

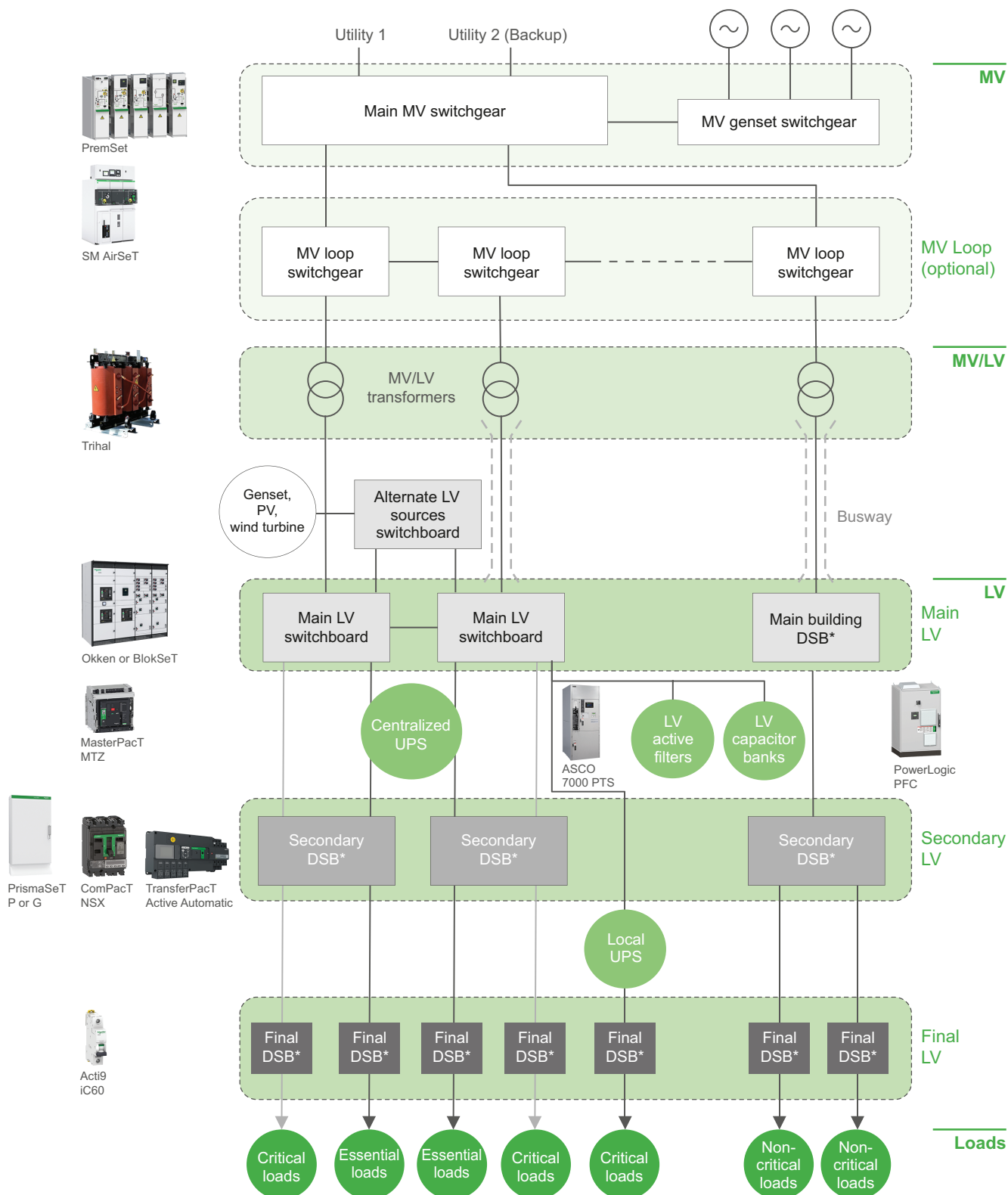
- Notification through mobile or desktop application of assigned, scheduled, or late maintenance tasks



EcoStruxure Facility Expert Maintenance Notifications

# Electrical Architecture

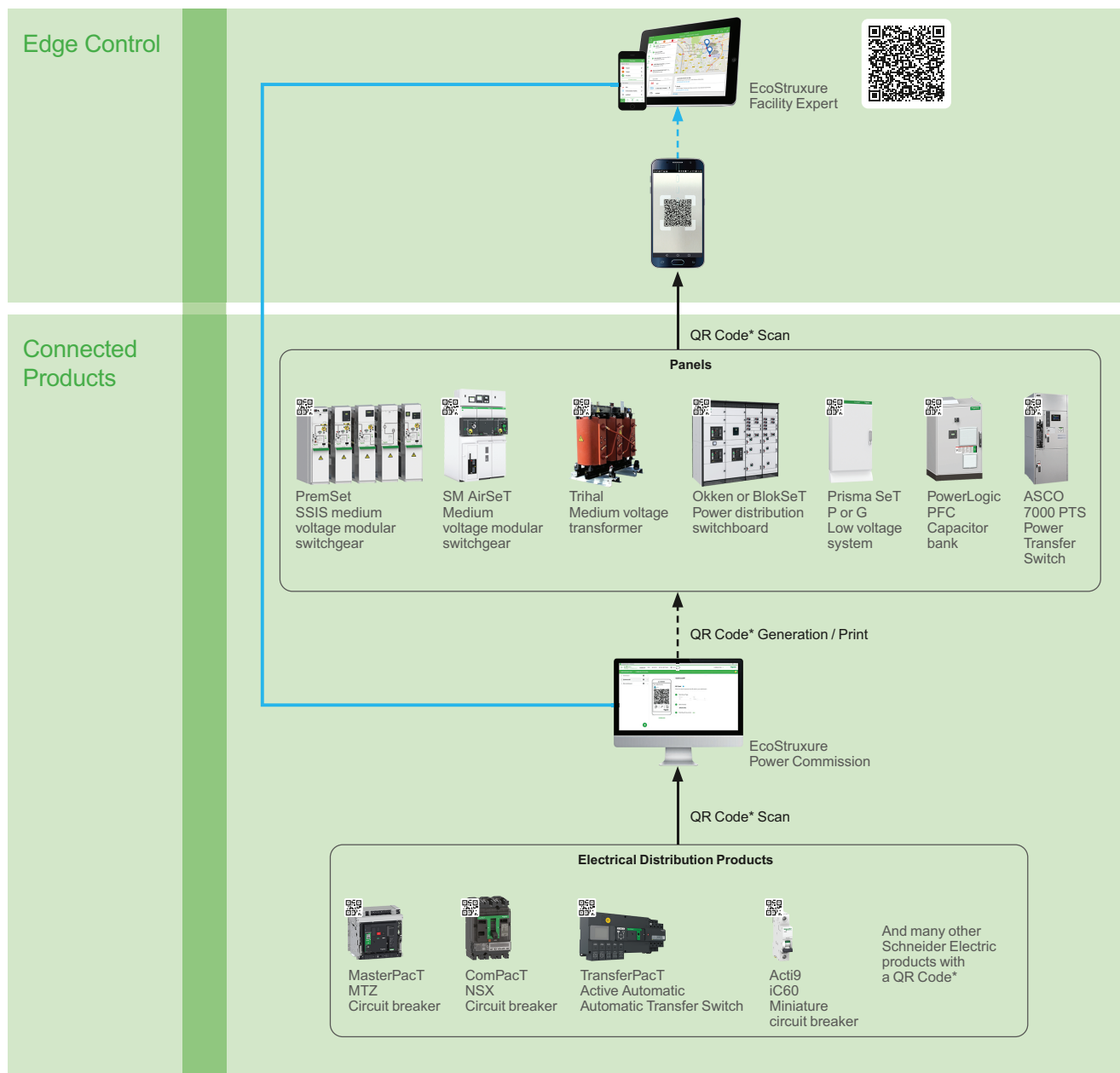
The following diagram details the areas of the architecture where the Electrical Asset Life Cycle Management application can be deployed.





# Digital Architecture

The recommended digital architecture for the application is shown below:

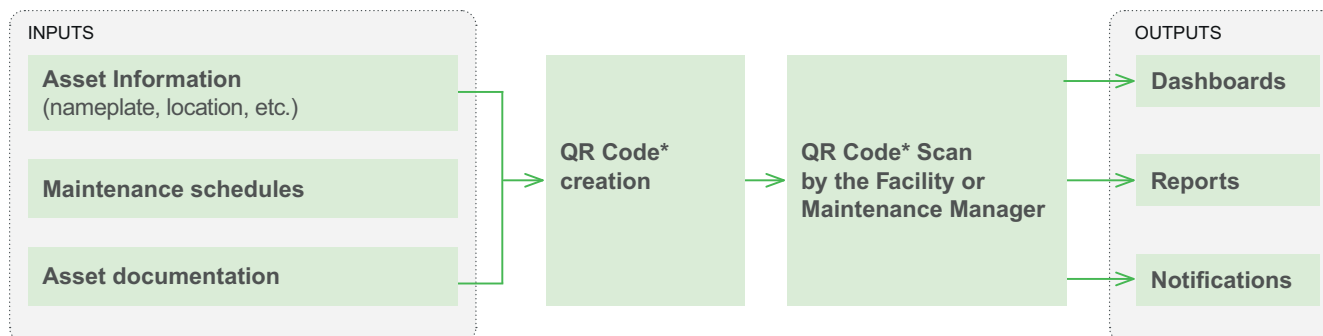


\* QR Code is a registered trademark of DENSO WAVE INCORPORATED in Japan and other countries.

# System Description

## Data Flow

The Electrical Asset Life Cycle Management application can be broken down as follows:



\* QR Code is a registered trademark of DENSO WAVE INCORPORATED in Japan and other countries.

## Inputs

The following data are acquired during the manufacturing and commissioning of electrical assets:

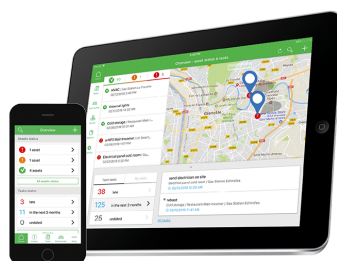
## Asset Information and Maintenance Schedules

- Electrical characteristics and serial number are captured as per nameplate, as well as context information that will help locate the Asset (customer, country, town, facility, building, floor, etc.).
- Maintenance templates and schedules include the standard manufacturer recommended maintenance procedures and schedules for a given electrical asset.
- Standard templates exist for a number of electrical assets such as:
  - Medium voltage equipment (PremSet, SM AirSeT, PIX)
  - Low voltage equipment (PrismaSeT, Okken)
  - Power transfer switches (ASCO 7000 Series PTS)
  - Motor control centers
  - Circuit breakers such as MasterPacT MTZ, ComPacT NSX, and Acti9 iC60
  - Power correction devices such as PowerLogic PFC and AccuSine
  - Trihal transformers
- For non-native equipment, templates can be created in EcoStruxure Facility Expert.



## Asset Documentation

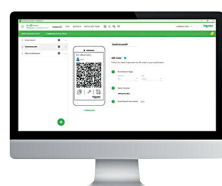
Asset documentation produced during panel construction can be attached to a defined electrical asset. This documentation may include wiring diagrams, single-line diagrams, user documentation, bill of materials, device serial numbers, and more. Documentation is stored digitally, accessible through the EcoStruxure Facility Expert app, and maintained as necessary during the operational life cycle.



EcoStruxure  
Facility Expert

## QR Code Creation

A QR Code<sup>2</sup> is produced through a process of installation and commissioning of electrical assets by Schneider Electric or the licensed panel builder using EcoStruxure Power Commission.



EcoStruxure  
Power Commission

2. QR Code is a registered trademark of DENSO WAVE INCORPORATED in Japan and other countries.

## QR Code Scan by the Facility or Maintenance Manager

The QR Code<sup>3</sup> for a given asset gives access to its associated documentation, maintenance requirements, and schedules. This simplifies utilization and maintenance of the equipment throughout its operational life cycle.



Equipment QR Code<sup>3</sup> (Nonfunctional Example Code)

## Outputs

Outputs are displayed remotely via EcoStruxure Facility Expert software.

## Dashboards

### Map View

EcoStruxure Facility Expert provides a map view of where electrical assets are located.

- By clicking on a particular site, the list of the electrical assets can be viewed.
- Selecting an electrical asset provides access to its preventive maintenance status, procedures, and documentation.
- The available documentation consists of test reports (electrical, communication, etc.), electrical drawings, bill of material (BOM), etc.
- Users can also identify the required maintenance tasks and assign them to the appropriate person or team.



EcoStruxure  
Facility Expert Map View

## Reports


### Facility Expert Maintenance Report


Maintenance reports can be generated to easily identify a summary of the status of maintenance tasks for electrical assets.

For a given asset, it provides:

- nameplate information
- key information including maintenance logs over the selected period, list of performed tasks, duration of inspections, and maintenance contributors
- visualization of all late or upcoming maintenance tasks

3. QR Code is a registered trademark of DENSO WAVE INCORPORATED in Japan and other countries.

 EcoStruxure  
Facility Expert

 Schneider  
Electric

## ASSETS SYNTHESIS

from 01/01/2018 to 12/31/2018

### HP Site Eybens

Logs over the period

Asset	Log description	Date	Status	Duration
HP Site Eybens				
LV Smart Panel Mains HP3				
Heat Pump feeder	Trip Potential cause is overload	01/28/2018	1	-
	Trip has been fixed	01/29/2018	0	01000
	Check CB	03/09/2018	0	01000
	Go on site to fix issue	09/11/2018	0	-
	Check load	11/12/2018	0	00H15
	Check amp rating	11/13/2018	0	-
	Check Heat Pump	11/13/2018	0	00H45
Zone C feeder				
	Advanced maintenance - Auxiliaries	01/15/2018	0	-
	Advanced maintenance - Auxiliaries	01/15/2018	0	-
	Advanced maintenance - Breaking unit	01/15/2018	0	-
	Advanced maintenance - Chassis	01/28/2018	0	01000
	Basic maintenance - Auxiliaries	01/28/2018	0	-
	Basic maintenance - Breaking unit	01/28/2018	0	00H30
	Basic maintenance - Chassis	01/28/2018	0	-
	Advanced maintenance - Breaking Unit	01/28/2018	0	00H15
	Advanced maintenance - Control unit	01/28/2018	0	01000
	Advanced maintenance - Power connection	01/28/2018	0	00H15

Summary report from 01/01/2018 to 12/31/2018  
Generated by EcoStruxure Facility Expert on 01/01/2019 - Facility Report

6/6

EcoStruxure Facility Expert Maintenance Report

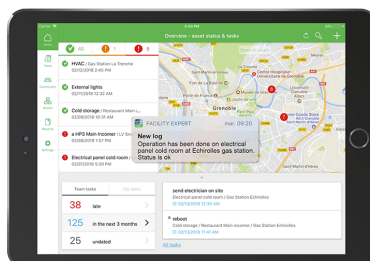
## Maintenance Plan

Maintenance plans with auto-generated templates for Schneider Electric assets can be generated.

## Notifications

The EcoStruxure Facility Expert application provides alerts and notifications when preventative maintenance tasks are due.

Alarm details and relevant associated actions such as acknowledgement, planning, and assignment of tasks are instantly accessible from the notification.



EcoStruxure Facility Expert Maintenance Notifications

Schneider Electric  
35 rue Joseph Monier  
92500 Rueil Malmaison  
France

+ 33 (0) 1 41 29 70 00

[www.se.com](http://www.se.com)

As standards, specifications, and design change from time to time,  
please ask for confirmation of the information given in this publication.

© 2023 Schneider Electric. All rights reserved.

ESXP2GE011EN-05