

Power Event Analysis (NEMA)

Analyze the Root Causes of Power Events

EcoStruxure Power Digital Application

0100DB2313

12/2023

EcoStruxure™ Power



Legal Information

The information provided in this document contains general descriptions, technical characteristics and/or recommendations related to products/solutions.

This document is not intended as a substitute for a detailed study or operational and site-specific development or schematic plan. It is not to be used for determining suitability or reliability of the products/solutions for specific user applications. It is the duty of any such user to perform or have any professional expert of its choice (integrator, specifier or the like) perform the appropriate and comprehensive risk analysis, evaluation and testing of the products/solutions with respect to the relevant specific application or use thereof.

The Schneider Electric brand and any trademarks of Schneider Electric SE and its subsidiaries referred to in this document are the property of Schneider Electric SE or its subsidiaries. All other brands may be trademarks of their respective owner.

This document and its content are protected under applicable copyright laws and provided for informative use only. No part of this document may be reproduced or transmitted in any form or by any means (electronic, mechanical, photocopying, recording, or otherwise), for any purpose, without the prior written permission of Schneider Electric.

Schneider Electric does not grant any right or license for commercial use of the document or its content, except for a non-exclusive and personal license to consult it on an "as is" basis.

Schneider Electric reserves the right to make changes or updates with respect to or in the content of this document or the format thereof, at any time without notice.

To the extent permitted by applicable law, no responsibility or liability is assumed by Schneider Electric and its subsidiaries for any errors or omissions in the informational content of this document, as well as any non-intended use or misuse of the content thereof.

AccuSine™, Acti 9™, Altivar™, ASCO™, BlokSeT™, ComPacT™, EcoStruxure™, EnerLin'X™, ETAP™, EVlink™, EvoPacT™, Galaxy™, Harmony™, Iso-Gard™, Masterclad™, MasterPacT™, MicroLogic™, Modicon™, Okken™, PowerLink™, PowerLogic™, PowerPacT™, Power-Zone™, PremSeT™, PrismaSeT™, Schneider Electric™, SM AirSeT™, Square D™, SureSeT™, TeSys™, TransferPacT™, Trihal™, and Vigilohm™ are trademarks and the property of Schneider Electric SE, its subsidiaries, and affiliated companies. All other trademarks (Cyber Sciences™, Hirschmann™) are the property of their respective owners.

Table of Contents

- Overview5
 - Context of Application5
 - Application Outcomes7
- Electrical Architecture9
- Digital Architecture..... 10
- System Description..... 11
 - Data Flow 11
 - Inputs 11
 - Data Recording and Timestamping 12
 - Time Synchronization 13
 - Data Processing 14
 - Outputs..... 14

Overview

Context of Application

Various power events can affect your electrical installation:

- Motor startup sequences leading to voltage sags and current overloads
- Transient events such as capacitor switching and surge impulses
- Unsuccessful power transfers caused by incorrect Automatic Transfer Switch / Power Transfer Switch (ATS/PTS) operation, etc.

These events can cause damage to sensitive equipment and processes, and result in unexpected downtime.

Thanks to connectivity and embedded sensors on critical equipment, it is easy to receive alarms when such power events occur. However, it can be much more difficult to find the root cause of power events without the proper context and tools.

Problem to Solve

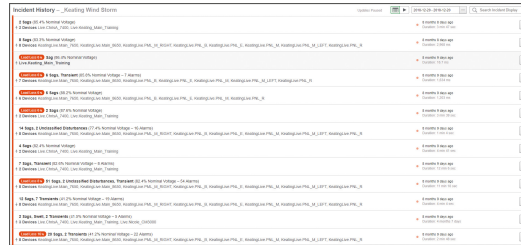
The facility manager needs to:

- Analyze potentially damaging power events to identify the root cause.
- Perform actions to avoid similar future events.
- Prioritize operator actions based on alarm priority.

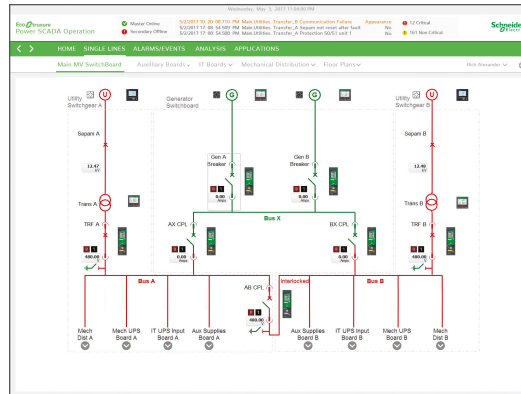
Purpose of the Application

Provide a user-friendly graphical tool to simplify and save time in event analysis

- Smart alarm context automatically brings any relevant information into view, including disturbance direction detection (DDD) and loss of load detection (LLD).
- Events and alarms can be viewed by category, severity, alarm type, and status.
- Events can be visualized in the context of time across multiple devices.
- Analyses can be saved for later viewing.
- Power system events can be visually replayed using an animated electrical single line diagram, floor plan, or facility riser.



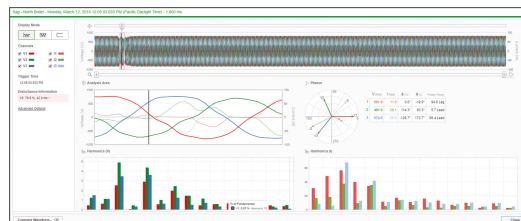
Smart Alarm View with LLD and DDD



Animated Single Line Diagram

Provide an aggregated view of events in the same dashboard

- Power quality, circuit breaker trip, and other power incidents across multiple devices can be intelligently grouped and displayed.
- Events can be visualized on a chronological timeline with contextual data such as RMS data and waveforms.



Waveform Viewer

Enable root cause analysis

- High probability causes of selected Power Quality events can be displayed to operators.

Incident: Sag/Swell - 6 Devices - 7/12/2022 7:05:51 438 AM - 30.4 sec	
<div> <div>Details</div> <div>Alarms</div> <div>Events</div> <div>Waveforms</div> </div>	
What	
Name	10 Sag/Swell (Voltage) Alarms
Type	Sag/Swell
Category	Power Quality
Priority	High (220)
State	● Inactive
When	
Start Time	7/12/2022 7:05:51 438 AM
End Time	7/12/2022 7:06:21 856 AM
Duration	30.4 sec
Time Quality	Not Supported
Waveform Analysis Information	
Source Name	cluster_pso APM/V Intake_B_PMI
Probable Cause	Upstream Voltage Sag
Load Loss	2.17%
Max Voltage	1.0113 pu
Min Voltage	0.8499 pu
Max Current	199.21 A
Min Current	118.80 A
Load Change	-86.18 KW
Load Change	-2.17%
BMS Discharge	3.75 mV

Automated Root Cause Analysis

Application Outcomes

Events and Alarms

- Chronological display of events and alarms with sorting and filtering capabilities
- Intelligent alarm grouping into summary incidents

Reports

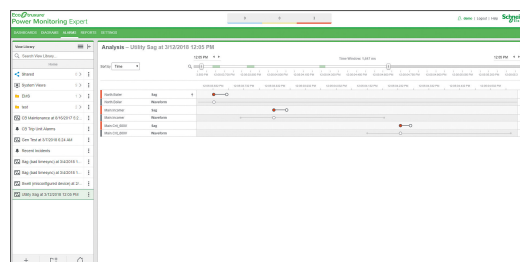
- Historical data reporting

Notifications

- SMS and/or email notifications can be sent for fast analysis and action.
- Email notifications are also available to send reports and non-critical information.

Analysis Tools

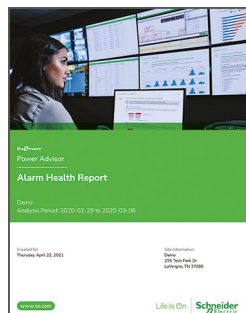
- **Power Event Incident Timeline:** helps identify the root cause and the consequences of an incident. This feature intelligently groups individual events and alarms as a single comprehensive incident during a given time period. Other data such as RMS waveforms and other electrical values are also accessible in a drill-down workflow.
- **Waveform Viewer:** power events can be visualized using the native waveform viewer in the Edge Control software.
- **Root Cause Analysis:** automated analytics built into the Edge Control software provide probable root cause of certain power events.
- **Power Event Playback:** if ASCO CPMA (Critical Power Management Appliance) is used to collect data in the system, power events can be recorded and replayed in dynamic one line diagrams.



Timeline of Power Events

Cloud-Based Analytics and Services

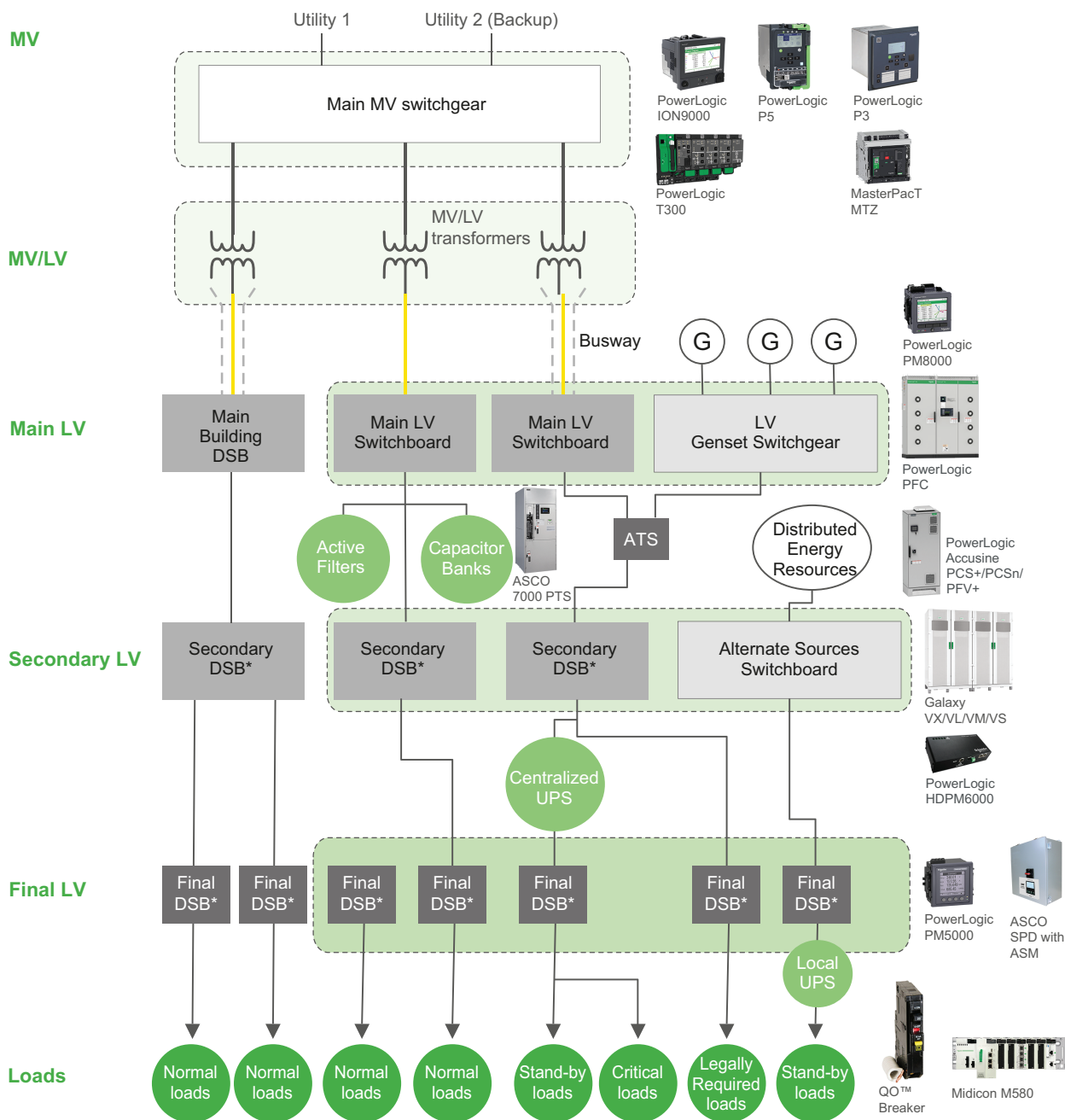
As an option, EcoStruxure Service Plan powered by EcoStruxure Power Advisor provides electrical network and alarm health analytics with recommendations from our Schneider Electric service experts.



EcoStruxure Power Advisor Alarm Health Report

Electrical Architecture

The following diagram details the areas of the architecture where the connected products should be installed in order to implement the Power Event Analysis application:



* DSB = Distribution Switchboard

Digital Architecture

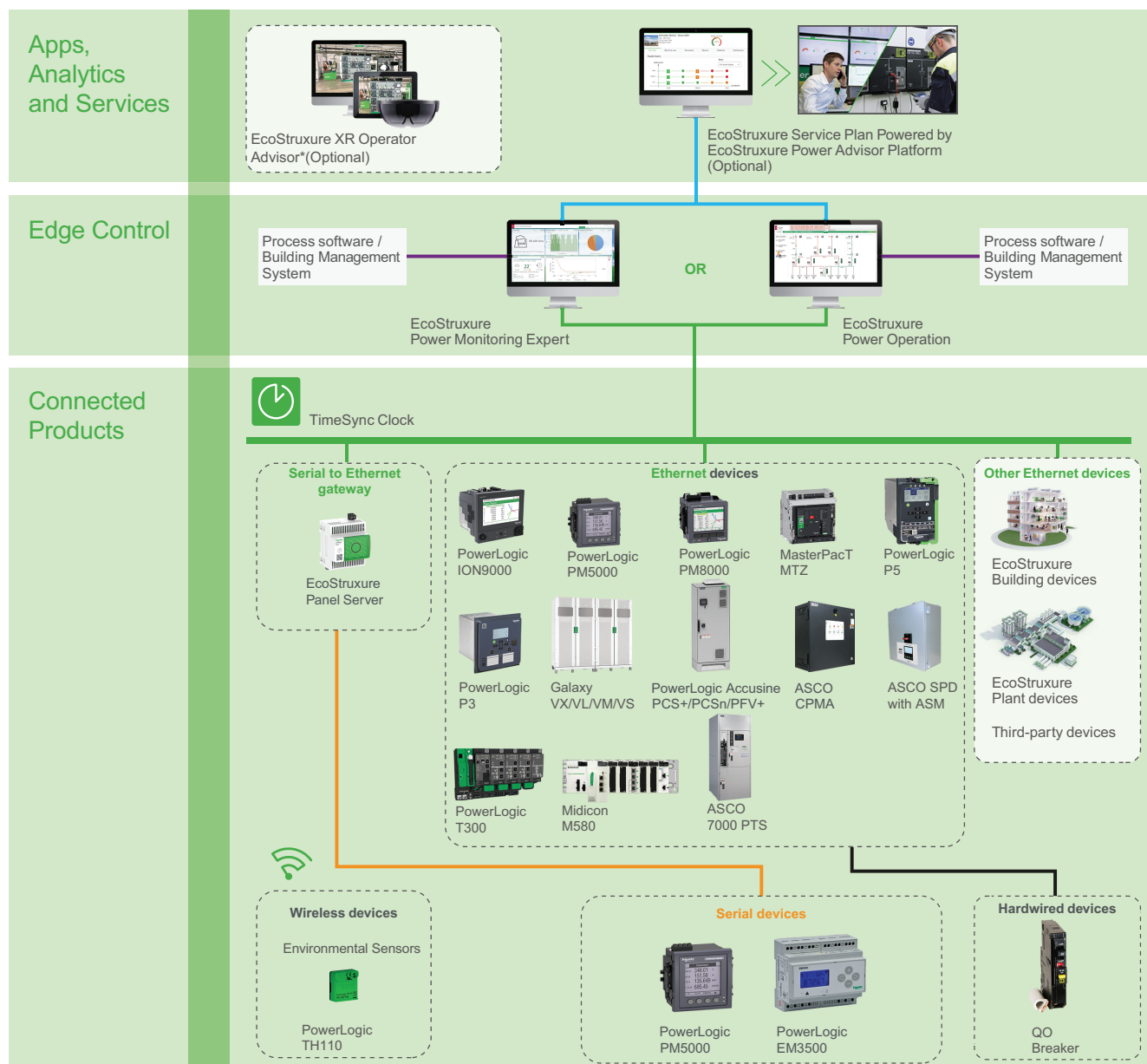
The digital architecture of the Power Event Analysis application involves collecting the input data from the different products, either directly over Ethernet or via gateways. This data is then used by the Edge Control software (EcoStruxure Power Monitoring Expert or Power Operation) for on-premise visualization analysis and reporting.

The most significant factors in the customer process can also be captured from external process software using the OPC standard or ETL tool.

As an option, EcoStruxure XR Operator Advisor Client can be used to enhance the Power Event Analysis application with virtually overlaid data on top of equipment and devices.

Data from EcoStruxure Power Monitoring Expert or Power Operation can be passed on to the EcoStruxure Power Advisor platform and interpreted by experts as a part of the EcoStruxure Service Plan.

The recommended digital architecture for the application is shown below:



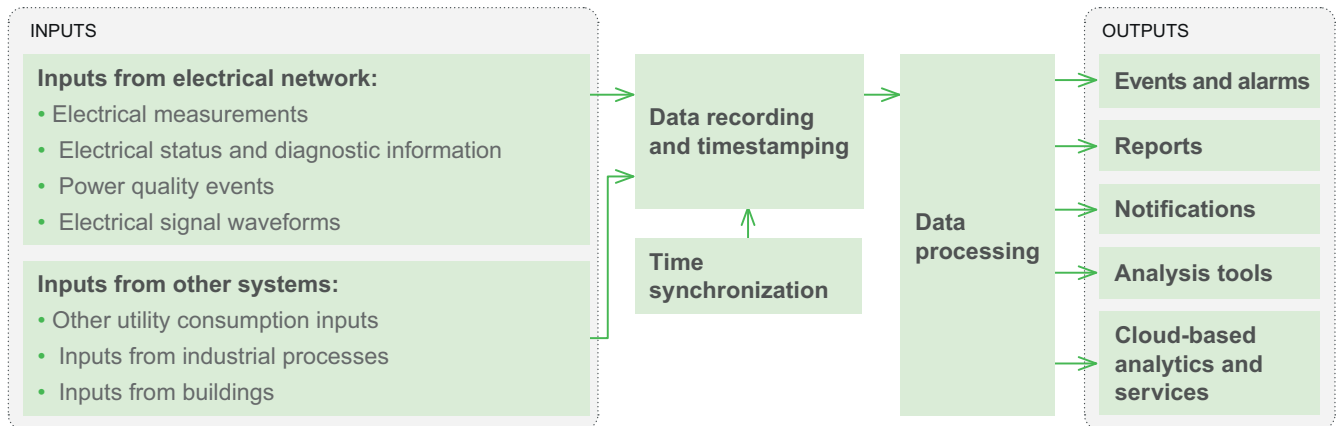
* See digital architecture of Guided Procedures through Extended Reality to understand how you can leverage EcoStruxure XR Operator Advisor for this application

— Ethernet - public LAN/WAN — Hardwired
 — Ethernet - technical LAN — OPC / ETL
 — Serial — Wireless - 2.4 GHz

System Description

Data Flow

The Power Event Analysis application can be broken down as follows:



Inputs

Electrical Measurements

The Power Event Analysis application collects data from connected products to provide access to consolidated views of electrical measurements, status information, and individual device details. It also monitors remote control actions.

Electrical measurements and status information can be acquired from a wide range of connected products as well as third-party equipment through open communication protocols. Typical connected products include:

- **Energy/Power meters**, such as PowerLogic ION9000, PM8000, PM5000, HDPM6000, EM3500



PowerLogic
ION9000



PowerLogic
PM8000



PowerLogic
PM5000



PowerLogic
HDPM6000



PowerLogic
EM3500

- **Protection devices**, such as PowerLogic P5/P3, MasterPacT MTZ, PowerPacT H/J/L



PowerLogic
P5



PowerLogic
P3



MasterPacT
MTZ



PowerPacT
H/J/L

- **Other equipment**, such as UPS (Galaxy VX/VL/VM/VS), ATS/PTS (ASCO 7000 Series PTS), ATS controller (PowerLogic T300), protective devices (ASCO SPD with ASM), power correction devices (PowerLogic PFC and AccuSine PCS+/PCSn/PFV+), Load Banks, PLCs (Modicon M580), motor control (TeSys), environmental sensors (PowerLogic CL110/TH110)



Galaxy
VX/VL/VM/VS



ASCO
7000 Series
PTS



PowerLogic
T300



ASCO
SPD with ASM



PowerLogic
PFC



PowerLogic
AccuSine
PCS+/PCSn/
PFV+



Load Banks



Modicon
M580



TeSys



PowerLogic
TH110



PowerLogic
CL110

Inputs from Other Systems

Other kinds of inputs can be used by the Power Event Analysis application:

- **Other utility consumption inputs:** water, gas, steam, etc.
- **Inputs from industrial processes:** motor, machine, or equipment status can be acquired from EcoStruxure Plant and Machine or third-party systems.
- **Inputs from buildings:** conditions in all facilities can be acquired from EcoStruxure Building Operation or third party systems.



EcoStruxure
Building



EcoStruxure
Plant and
Machine

Data Recording and Timestamping

For highly critical applications, optimal chronological correlation is achieved with a time accuracy of ± 1 millisecond (possible using PTP or GPS time synchronization).

For less critical applications, a time accuracy of ± 100 milliseconds is adequate (with NTP and SNTP).

Time stamping and recording depends on the connected product type:

- **Advanced meters** such as the PowerLogic ION9000, PM8000, and some PowerLogic PM5000 models (PM53xx and PM55xx) can timestamp and record onboard input data.

PowerLogic
ION9000PowerLogic
PM8000PowerLogic
PM5000

- **For other connected products** (PowerLogic P5/P3, T300, MasterPacT MTZ, and entry-level PowerLogic PM5000 models) steady state disturbances and other data are measured by the connected products and recorded by software (EcoStruxure Power Monitoring Expert or Power Operation) or by a server (ASCO CPMA).

PowerLogic
P5PowerLogic
P3PowerLogic
T300Master-
PacT
MTZPowerLogic
PM5000EcoStruxure
Power Monitoring ExpertEcoStruxure
Power OperationASCO
CPMA

- **If data from these connected products require more accurate timestamping**, it should be relayed through another connected product or data recorder with better accuracy (like PowerLogic ION9000 power quality meter, Modicon M580 PLC, or Cyber Sciences SER 3200/2408).

PowerLogic
ION9000Modicon
M580Cyber
Sciences
SER 3200/
2408

When acquiring data from other systems, timestamps are imported through OPC¹ or ETL².

For a comprehensive overview of device recording and timestamping capabilities, refer to [Data Recording and Time Synchronization Capabilities of EcoStruxure Power Connected Products](#).

Time Synchronization

For a consistent chronological view of all events that take place throughout the facility, the date and time should be accurately distributed to connected products and other management systems.

1. OPC: Open Platform Communications;
2. The EcoStruxure Extract Transform Load (ETL) engine is a companion application for EcoStruxure Power Monitoring Expert and Power Operation. It is used to extract historical data from one application (Schneider Electric or third-party), then transform that data so it can be loaded into another application.

Time synchronization can be performed through various technologies (PTP, NTP, SNTP, etc.). Time synchronization precision is essential to derive value from Power Event Analysis. An external master clock is required and can be connected to a GPS antenna to reach the expected time precision.



TimeSync Clock

Data Processing

Smart Clustering

Data processing consists of:

- Consolidation of events, alarms, waveforms, status changes, and other corresponding data from all connected products in chronological views
- Smart grouping of related data to help identify the root cause of incidents

Smart clustering is performed by EcoStruxure Power Monitoring Expert or Power Operation.

EcoStruxure
Power Monitoring ExpertEcoStruxure
Power Operation

Outputs

Outputs are displayed by the Edge Control software (EcoStruxure Power Monitoring Expert or Power Operation).

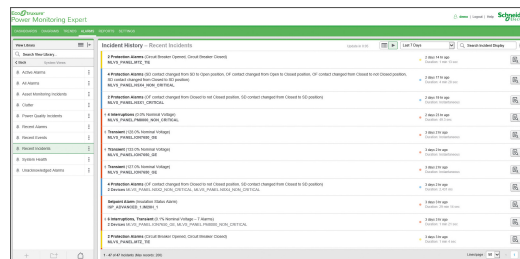
EcoStruxure
Power Monitoring ExpertEcoStruxure
Power Operation

Events and Alarms

Event/Alarm Log Viewers

These offer chronological display with sorting and filtering capabilities.

- EcoStruxure Power Operation offers high speed Sequence of Events Recording to quickly locate the source of any abnormal conditions. A time-quality flag indicates the accuracy of onboard clocks and the resulting accuracy of any events and alarms.
- EcoStruxure Power Monitoring Expert and Power Operation intelligently group related alarms, events, waveforms, and other associated data in an incident view to simplify the root cause analysis of an incident.



Alarm and Event Log Viewer in EcoStruxure Power Monitoring Expert and Power Operation.

NOTE: Smart alarm views include relevant context acquired from smart power quality metering to indicate direction of a disturbance (upstream or downstream of the device capturing an event) and a percentage of nominal load lost as a result of an event such as a sag, transient, or interruption.

Reports

When EcoStruxure Power Monitoring Expert or Power Operation is installed, reports can be generated, such as the Event History Report.

[illegible]

Event History Report

Notifications

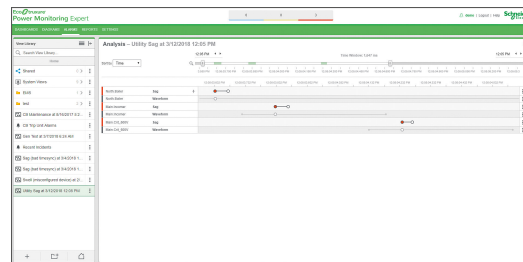
Notifications of events and alarms can be sent by EcoStruxure Power Monitoring Expert or Power Operation using the Event Notification Module.

Analysis Tools

Power Events Incident Timeline

The Power Events Incident Timeline helps identify the root cause and the consequences of an incident using the following advanced functions:

- Sorting of event and alarm data according to their date and time
- Detailed breakdown and sequence of alarms, waveforms, and trends involved in the incident
- Disturbance direction detection to locate upstream/downstream root cause of an incident



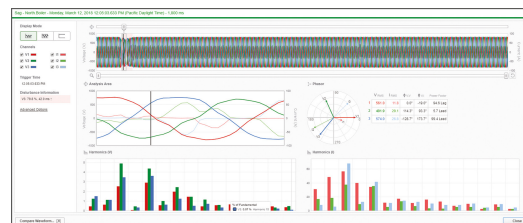
Power Events Incident Timeline

Waveform Viewer

Electrical signal waveforms can be displayed with a native waveform viewer in both EcoStruxure Power Monitoring Expert and Power Operation.

These viewers allow for the following:

- Toggle on/off voltage and current channels
- RMS calculation, zoom, pan, export to CSV
- Interactive phasor and harmonic (voltage and current) diagrams
- Comparison of multiple waveforms with respect to each other



Waveform Viewer

Root Cause Analysis

Automated waveform analytics provide the probable root cause of certain power quality events including:

- Voltage sag
- Inrush event
- Load start
- Single-phase fault
- Subcycle fault
- Three-phase fault
- Two-phase fault

This detailed data enables appropriate actions to be identified.

Incident: Sag/Swell - 6 Devices - 7/12/2022 7:05:51.438 AM - 30.4 sec	
Details	What
Alarms	Name 10 Sag/Swell (Voltage) Alarms
Events	Detail
Waveforms	Type Sag/Swell
	Category Power Quality
	Priority High (220)
	State ● Inactive
	When
	Start Time 7/12/2022 7:05:51.438 AM
	End Time 7/12/2022 7:06:21.856 AM
	Duration 30.4 sec
	Time Quality Not Supported
	Waveform Analysis Information
	Source Name cluster_pos AP/MV Intake_B_PM
	Probable Cause Upstream Voltage Sag
	Load Loss 2.17%
	Max Voltage 1.0113 pu
	Min Voltage 0.8499 pu
	Max Current 199.21 A
	Min Current 118.80 A
	Load Change -88.18 KW
	Load Change -2.17%
	RMS Duration 2.75 cyc

Root Cause Analysis

Power Event Playback

If ASCO CPMA (Critical Power Management Appliance) is used to collect data in the system, power events can be recorded and replayed in dynamic one line diagrams

The playback tool offers comprehensive, easy-to-use capabilities:

- Continuously record all dynamic one line and floor plan control animations, sequence of events, and analog power data.
- Replay animated one line view of selected power events for better understanding of power event interdependency.
- Archive and share replayed animated one line events to improve collaboration and root cause analysis.

Cloud-Based Analytics and Services

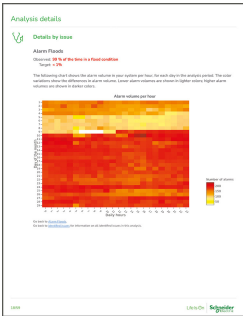
As an option, EcoStruxure Service Plan powered by EcoStruxure Power Advisor provides electrical network and alarm health analytics with recommendations from our Schneider Electric service experts. It helps categorize and reduce alarms.



EcoStruxure Service PlanPowered by EcoStruxure Power Advisor Platform



EcoStruxure Power Advisor
Alarm Health Report - Overall
Alarm System Health



EcoStruxure Power Advisor
Alarm Health Report - Alarm
Floods



EcoStruxure Power Advisor
Alarm Health Report - Details
by Issue

Schneider Electric
35 rue Joseph Monier
92500 Rueil Malmaison
France

+ 33 (0) 1 41 29 70 00

www.se.com

As standards, specifications, and design change from time to time,
please ask for confirmation of the information given in this publication.

© 2023 Schneider Electric. All rights reserved.

0100DB2313