

Galaxy VS

200/208/220/480 V UPS Systems

Earthing Principles

Latest updates are available on the Schneider Electric website

5/2025



Legal Information

The information provided in this document contains general descriptions, technical characteristics and/or recommendations related to products/solutions.

This document is not intended as a substitute for a detailed study or operational and site-specific development or schematic plan. It is not to be used for determining suitability or reliability of the products/solutions for specific user applications. It is the duty of any such user to perform or have any professional expert of its choice (integrator, specifier or the like) perform the appropriate and comprehensive risk analysis, evaluation and testing of the products/solutions with respect to the relevant specific application or use thereof.

The Schneider Electric brand and any trademarks of Schneider Electric SE and its subsidiaries referred to in this document are the property of Schneider Electric SE or its subsidiaries. All other brands may be trademarks of their respective owner.

This document and its content are protected under applicable copyright laws and provided for informative use only. No part of this document may be reproduced or transmitted in any form or by any means (electronic, mechanical, photocopying, recording, or otherwise), for any purpose, without the prior written permission of Schneider Electric.

Schneider Electric does not grant any right or license for commercial use of the document or its content, except for a non-exclusive and personal license to consult it on an "as is" basis.

Schneider Electric reserves the right to make changes or updates with respect to or in the content of this document or the format thereof, at any time without notice.

To the extent permitted by applicable law, no responsibility or liability is assumed by Schneider Electric and its subsidiaries for any errors or omissions in the informational content of this document, as well as any non-intended use or misuse of the content thereof.

Access to Your Product Manuals Online

Find the UPS Manuals, Submittal Drawings, and Other Documentation for Your Specific UPS Here:

In your web browser, type in <https://www.go2se.com/ref=> and the commercial reference for your product.

Example: <https://www.go2se.com/ref=GVSUPS20KHS>

Example: <https://www.go2se.com/ref=GVSUPS20KGS>

Find the UPS Manuals, Relevant Auxiliary Product Manuals, and Option Manuals Here:

Scan the code to go to the Galaxy VS online manual portal:

IEC (380/400/415/440 V)



https://www.productinfo.schneider-electric.com/galaxyvs_iec/

UL (200/208/220/480 V)



https://www.productinfo.schneider-electric.com/galaxyvs_ul/

Here you can find your UPS installation manual, UPS operation manual, and UPS technical specifications, and you can also find installation manuals for your auxiliary products and options.

This online manual portal is available on all devices and offers digital pages, search functionality across the different documents in the portal, and PDF download for offline use.

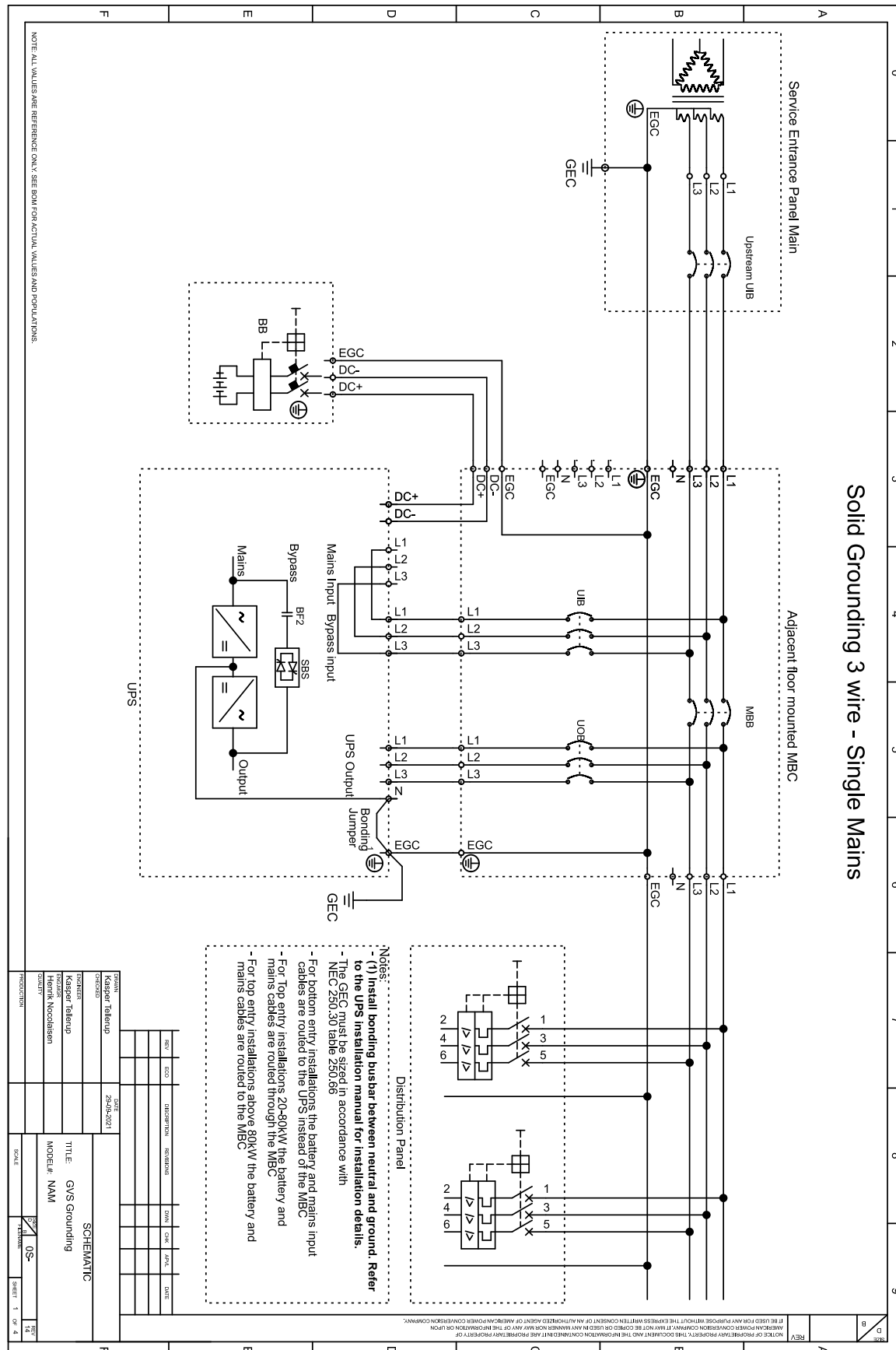
Learn More About the Galaxy VS Here:

Go to <https://www.se.com/ww/en/product-range/65772> to learn more about this product.

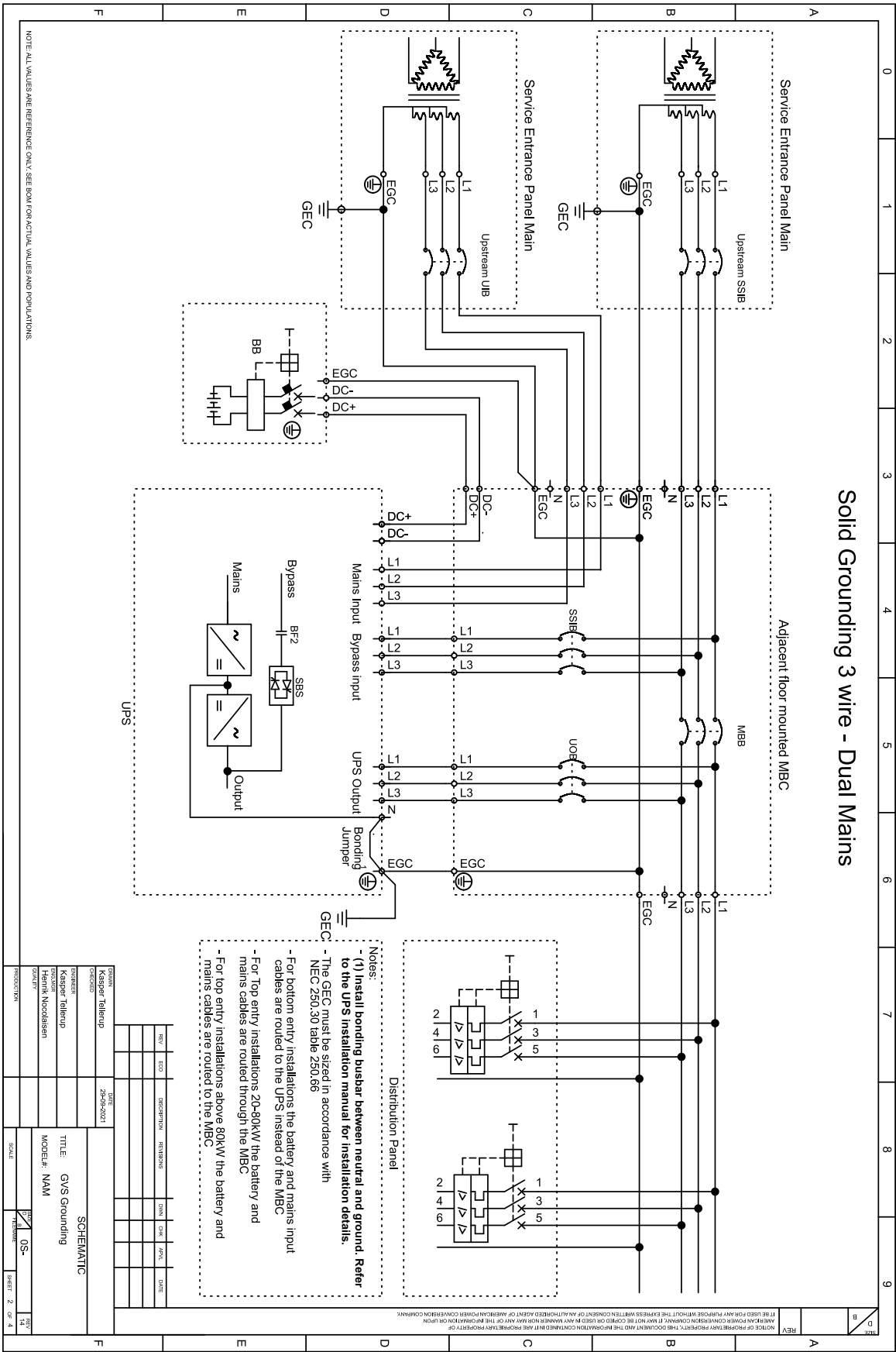
Table of Contents

Earthing Diagrams for Solid Grounding5

Solid Grounding 3-wire Single Mains



Solid Grounding 3-wire Dual Mains



Solid Grounding 4 wire - Single Mains

Service Entrance Panel Main

Upstream MBB

Adjacent floor mounted MBB

Distribution Panel

UPS

Battery Bank

Notes:

- For bottom entry installations the battery and mains input cables are routed to the UPS instead of the MBB
- For Top entry installations 20-80KW the battery and mains cables are routed through the MBB
- For top entry installations above 80KW the battery and mains cables are routed to the MBB

Legend:

REV	ECO	DESCRIPTION	DATE
1			
2			
3			
4			
5			
6			
7			
8			
9			
10			

Revision History:

REV	ECO	DESCRIPTION	DATE
1			
2			
3			
4			
5			
6			
7			
8			
9			
10			

Project Information:

PROJECT	DATE	SCALE	SHEET	OF
Kasper Tallup	20-09-2021	1:1	3	4

Notes:

- For bottom entry installations the battery and mains input cables are routed to the UPS instead of the MBB
- For Top entry installations 20-80KW the battery and mains cables are routed through the MBB
- For top entry installations above 80KW the battery and mains cables are routed to the MBB

Legend:

REV	ECO	DESCRIPTION	DATE
1			
2			
3			
4			
5			
6			
7			
8			
9			
10			

Revision History:

REV	ECO	DESCRIPTION	DATE
1			
2			
3			
4			
5			
6			
7			
8			
9			
10			

Project Information:

PROJECT	DATE	SCALE	SHEET	OF
Kasper Tallup	20-09-2021	1:1	3	4

Notes:

- For bottom entry installations the battery and mains input cables are routed to the UPS instead of the MBB
- For Top entry installations 20-80KW the battery and mains cables are routed through the MBB
- For top entry installations above 80KW the battery and mains cables are routed to the MBB

Legend:

REV	ECO	DESCRIPTION	DATE
1			
2			
3			
4			
5			
6			
7			
8			
9			
10			

Revision History:

REV	ECO	DESCRIPTION	DATE
1			
2			
3			
4			
5			
6			
7			
8			
9			
10			

Project Information:

PROJECT	DATE	SCALE	SHEET	OF
Kasper Tallup	20-09-2021	1:1	3	4

Notes:

- For bottom entry installations the battery and mains input cables are routed to the UPS instead of the MBB
- For Top entry installations 20-80KW the battery and mains cables are routed through the MBB
- For top entry installations above 80KW the battery and mains cables are routed to the MBB

Legend:

REV	ECO	DESCRIPTION	DATE
1			
2			
3			
4			
5			
6			
7			
8			
9			
10			

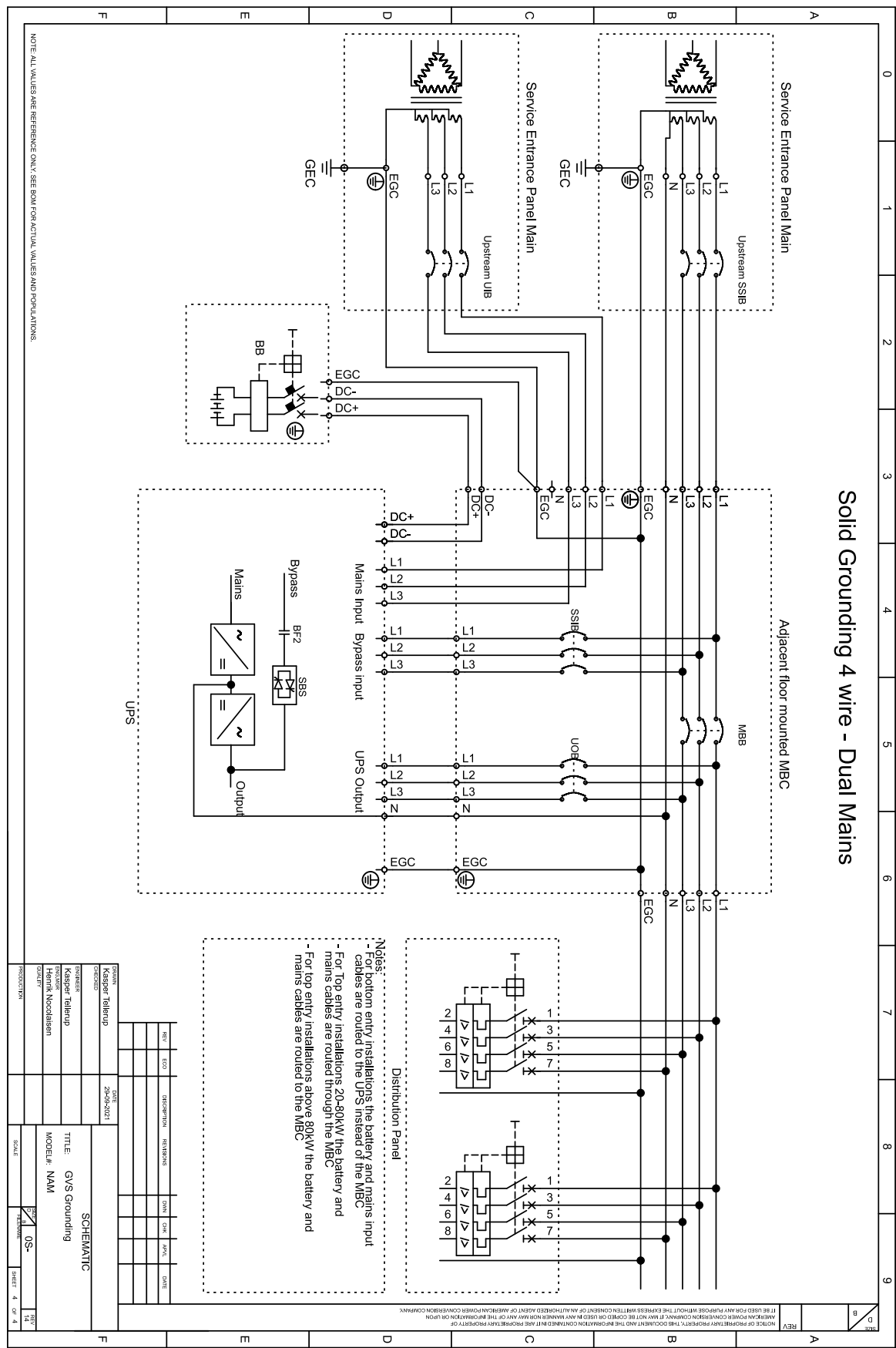
Revision History:

REV	ECO	DESCRIPTION	DATE
1			
2			
3			
4			
5			
6			
7			
8			
9			
10			

Project Information:

PROJECT	DATE	SCALE	SHEET	OF
Kasper Tallup				

Solid Grounding 4-wire Dual Mains



Schneider Electric
35 rue Joseph Monier
92500 Rueil Malmaison
France

+ 33 (0) 1 41 29 70 00

www.se.com

As standards, specifications, and design change from time to time, please ask for confirmation of the information given in this publication.

© 2025 – 2025 Schneider Electric. All rights reserved.

990-992626-001