

# Iconic Connected Twin 10 A Socket

## Device user guide

Information about features and functionality of the device.

05/2023



# Legal Information

The Schneider Electric brand and any trademarks of Schneider Electric SE and its subsidiaries referred to in this guide are the property of Schneider Electric SE or its subsidiaries. All other brands may be trademarks of their respective owners.

This guide and its content are protected under applicable copyright laws and furnished for informational use only. No part of this guide may be reproduced or transmitted in any form or by any means (electronic, mechanical, photocopying, recording, or otherwise), for any purpose, without the prior written permission of Schneider Electric.

Schneider Electric does not grant any right or license for commercial use of the guide or its content, except for a non-exclusive and personal license to consult it on an "as is" basis. Schneider Electric products and equipment should be installed, operated, serviced, and maintained only by qualified personnel.

As standards, specifications, and designs change from time to time, information contained in this guide may be subject to change without notice.

To the extent permitted by applicable law, no responsibility or liability is assumed by Schneider Electric and its subsidiaries for any errors or omissions in the informational content of this material or consequences arising out of or resulting from the use of the information contained herein.

---

# Table of Contents

Safety information .....	4
Iconic Connected Twin 10 A Socket.....	5
For your safety .....	5
About the device.....	5
Installing the device .....	5
Changing device protocol.....	6
Pairing the device .....	6
Pairing Zigbee device manually.....	6
Pairing Zigbee device with auto scan.....	8
Pairing Bluetooth device manually.....	9
Manual operation.....	10
Configuring the device .....	11
Changing the device icon .....	11
Renaming the device .....	12
Changing the device location .....	12
Zigbee Mode .....	13
Using the device .....	13
Removing the device.....	21
Bluetooth Mode .....	22
Socket settings .....	22
Using the device .....	25
Removing the device.....	29
Resetting the device manually .....	29
LED Indication.....	31
Troubleshooting .....	31
Technical Data .....	32
Compliance.....	33
Compliance information for Green Premium products .....	33
Trademarks .....	33

# Safety information

## Important information

Read these instructions carefully and look at the equipment to become familiar with the device before trying to install, operate, service, or maintain it. The following special messages may appear throughout this manual or on the equipment to warn of potential hazards or to call attention to information that clarifies or simplifies a procedure.



The addition of either symbol to a “Danger” or “Warning” safety label indicates that an electrical hazard exists which will result in personal injury if the instructions are not followed.



This is the safety alert symbol. It is used to alert you to potential personal injury hazards. Obey all safety messages that accompany this symbol to avoid possible injury or death.

### **DANGER**

**DANGER** indicates a hazardous situation which, if not avoided, **will result in** death or serious injury.

**Failure to follow these instructions will result in death or serious injury.**

### **WARNING**

**WARNING** indicates a hazardous situation which, if not avoided, **could result in** death or serious injury.

### **CAUTION**

**CAUTION** indicates a hazardous situation which, if not avoided, **could result in** minor or moderate injury.

### **NOTICE**

NOTICE is used to address practices not related to physical injury.



# Iconic Connected Twin 10 A Socket



PDL395CSG, PDL395CSGZ

## For your safety

### **⚠ DANGER**

#### **HAZARD OF ELECTRIC SHOCK, EXPLOSION, OR ARC FLASH**

- It is illegal for persons other than an appropriately licensed electrical contractors or other persons authorised by legislation to work on the fixed wiring of any electrical installation.
- To comply with all safety standards, the device must be used only for the purpose described in this instruction and must be installed in accordance with the wiring rules and regulation in the location where it is installed.
- Lock out and tag the input circuit before accessing the wiring connections.
- There are no user serviceable parts inside the device.

**Failure to follow these instructions will result in death or serious injury.**

## About the device

The Iconic Connected Socket Twin 10 A (hereinafter referred as **Iconic Socket**) is a connected electrical outlet designed to manage and control electrical devices in a convenient and efficient manner. It provides app controlled switching of plug-in appliances using the Wiser by SE app.

In BLE mode, the socket has a 12-24 hr time delay and 24/7 schedule functionality. In Zigbee mode, the socket can be integrated into Moments and Automations or simply be operated with time-scheduled output. When the manual switch on the socket is in the smart position, the socket can be controlled remotely.

## Installing the device

Refer to the installation instruction supplied with this product.

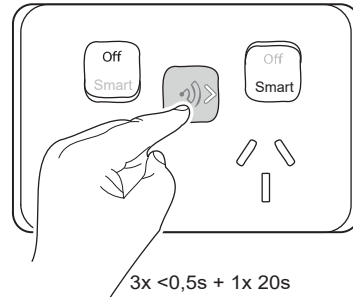
See Iconic Connected Twin 10 A Socket, Zigbee/BLE.

## Changing device protocol

The communication protocol of the device can be changed from Zigbee® to Bluetooth® and Bluetooth® to Zigbee®.

To change the pairing mode:

Short press the touch button 3 times and then long press once (> 30s).




Bluetooth pairing mode changes to Zigbee pairing mode, or Zigbee pairing mode changes to Bluetooth pairing mode.

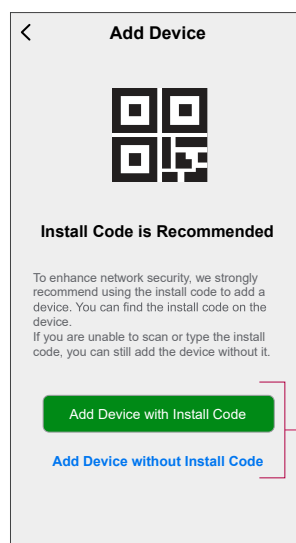
## Pairing the device

Using the Wiser app, pair your device with the **Wiser Hub** to access and control the device. You can either add the device manually or do an auto-scan to pair it.

### Pairing Zigbee device manually

To pair the device manually:

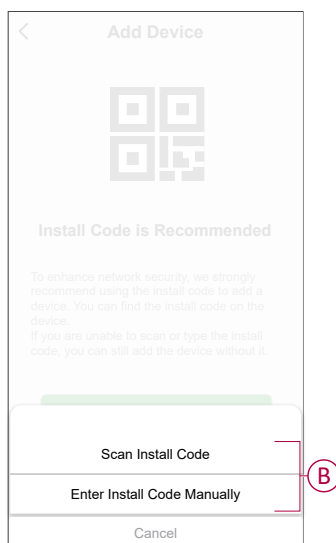
1. On **Home** page, tap **+**.
2. Tap  and select the required **Wiser Hub** on the slide-up menu.
3. Select an option to add the device (A):
  - **Add Device with Install Code**
  - **Add Device without Install Code**



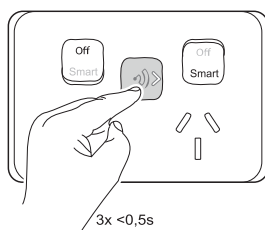
**TIP:** It is recommended to add the device with install code.

4. To pair the device with install code, tap **Add Device with Install Code** to display the slide-up menu. Select any one of the options (B):
- **Scan Install Code:** you can scan the device for the install code.
  - **Enter Install Code Manually:** you can manually enter the install code from the device.

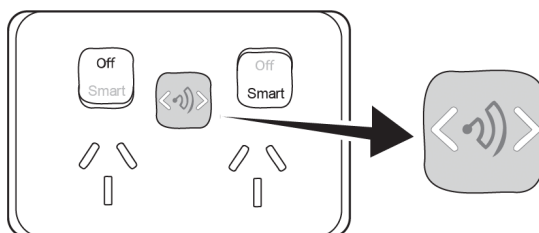
After scanning or entering the install code, proceed to **Step 6**.



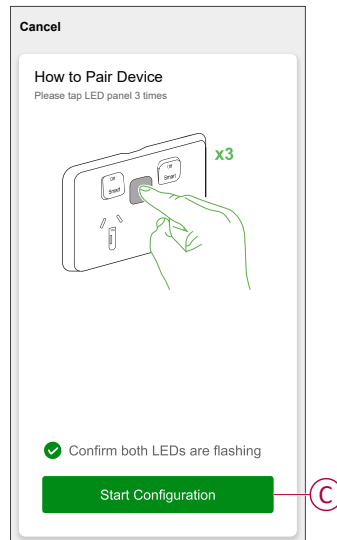
5. To pair the device without install code, tap **Add Device without Install Code**.
6. Short press the LED panel 3 times ( $< 0,5$  s).



The LED blinks white.



7. In the app, select **Confirm both LEDs are flashing** and tap **Start Configuration (C)**.



Wait for a few minutes for the app to connect with Iconic Socket.

8. Once the device is added in the app, tap **Done**.

## Pairing Zigbee device with auto scan

Pairing the device with auto scan automatically discovers the device when the corresponding device is powered on.

To pair the device with auto scan:

1. On the **Home** page, tap **+**.
2. Tap **Auto scan > Confirm**.
3. Enable permissions to **Access location** and **Wi-Fi** for scanning device and tap **Start scanning**.

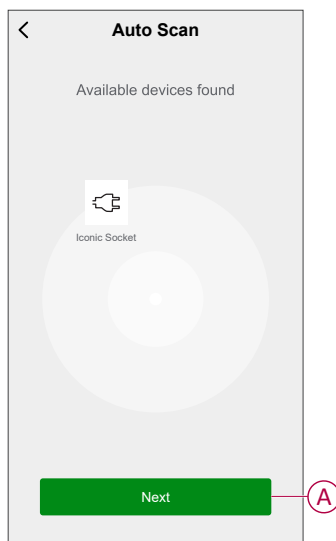
**NOTE:** If you have multiple hubs, do Step 4 or proceed to Step 5.

4. Tap **Select hub** and select the Wiser hub from the slide-up menu.
5. Short-press the touch button three times.

**NOTE:** Wait for a few seconds until the device search is complete.

**TIP:** If you want to pair multiple devices at once, perform step 5 on each device and wait for a few seconds for them to be detected.

6. Tap **Next** (A), select **Iconic Socket**.




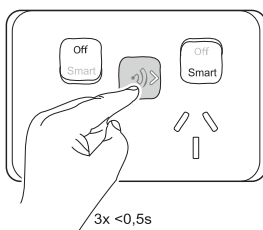
7. Once the device is added successfully, tap **Done**.

## Pairing Bluetooth device manually

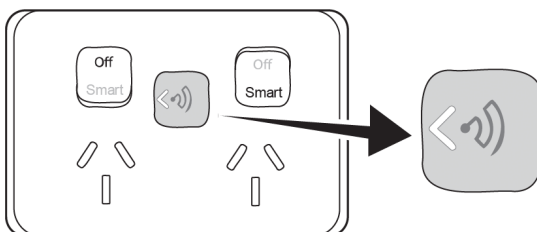
Using the Wiser app, you can pair the device with smartphone to access and control the device.

**NOTE:** When pairing the Bluetooth device with the Wiser app, be within a range of 8 to 10 m of the module. Range can be affected by wall thickness and construction materials.

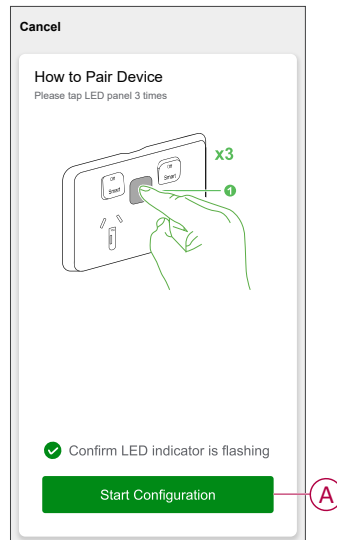
1. On **Home** page, tap **+** then tap .
2. Short press the LED panel 3 times (< 0,5 s).




The LED blinks white alternatively.



3. In the app, select **Confirm LED indicator is flashing** and tap **Start Configuration (A)**.



**NOTE:** Enable permissions to nearby devices and Bluetooth for scanning the device.

4. Tap  to select and add the device from the list and then tap **Next > Done**.

**NOTE:** The device can be paired with max. 8 smartphones. To pair an additional phone, you must unpair one of the existing phones. Refer managed paired phones, page 24.

## Manual operation

Socket can be operated manually using rocker switch and touch switch.

### Rocker switch

#### Off state

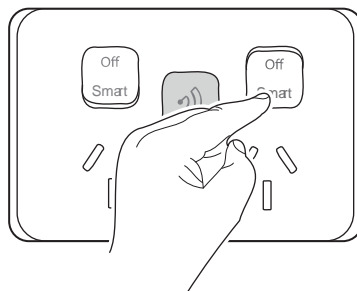
- No power is available at the socket.
- The socket cannot be remotely switched using Wiser app.
- Timer and scheduler has no effect on the socket.

#### Smart state

- Power is available at the socket.
- The socket can be remotely switched using Wiser app.

**NOTE:** A socket that is remotely switched off using the Wiser app has no power at all, even if the rocker switch is set to smart mode. To find out if a socket is On, tap the touch switch (see Power indication below).

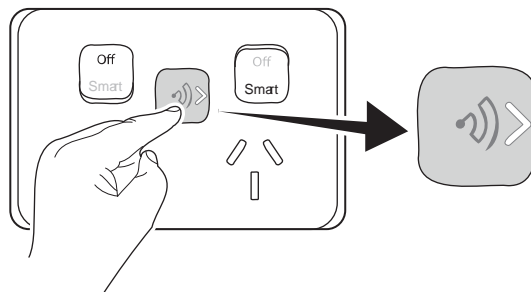
- Timer and scheduler operates the socket if configured.



## Touch switch

### Power indication

- Tap the touch switch to find out if a socket is on.
- Arrows displayed in the touch switch indicate that power available at a socket:
  - **Left arrow LED on:** power available at left socket.
  - **Right arrow LED on:** power available at right socket.

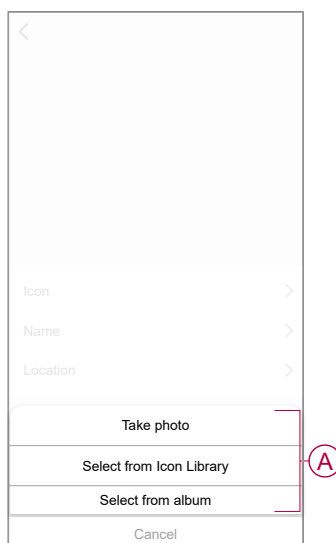


## Configuring the device

### Changing the device icon



You can change the device icon using the Wiser app.

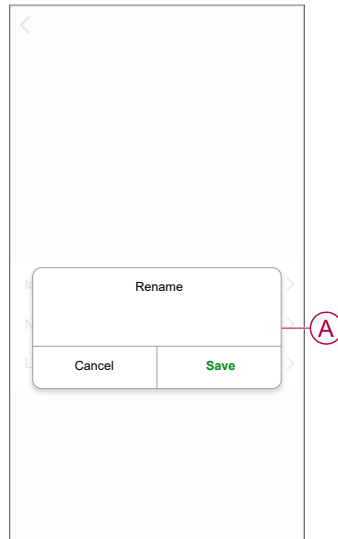
1. On the **Home** page, select the device for which you wish to change the icon.
2. At the top-right corner of the screen, tap .
3. Tap edit next to the device name.
4. Tap **Icon** to view the menu.
5. In the slide-up menu, select any one of the following (A) to change the device icon:
  - **Take photo** - allows you to take a photo with your device camera.
  - **Select from Icon Library** - allows you to select an icon from the app library.
  - **Select from Album** - allows you to select a photo from the mobile gallery.



## Renaming the device



You can rename the device using the Wiser app.

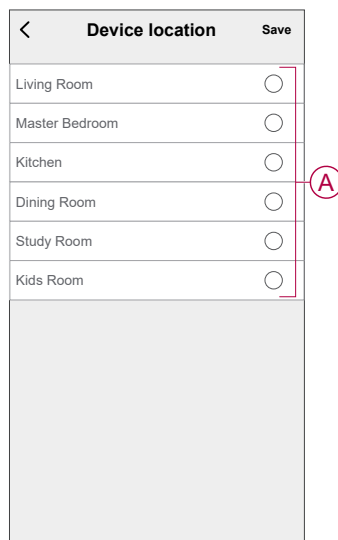
1. On the **Home** page, select the device for which you wish to rename.
2. At the top-right corner of the screen, tap .
3. Tap edit  next to the device name.
4. Tap **Name**, enter the new name (A) and then tap **Save**.



## Changing the device location

You can change the device location using the Wiser app.

1. On the **Home** page, select the device for which you wish to change the location.
2. At the top-right corner of the screen, tap .
3. Tap edit  next to the device name.
4. Tap **Location**.
5. Select the desired location from the list (A) and then tap **Save**.





## Zigbee Mode

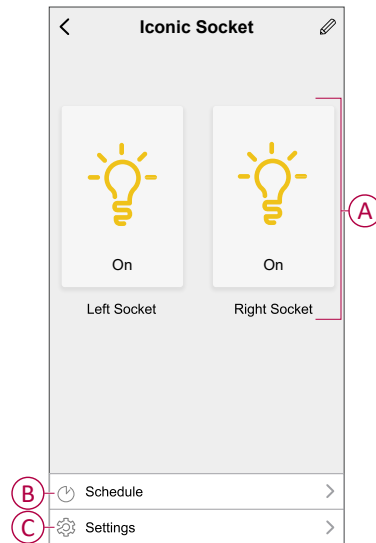
### Using the device

The Control Panel allows you to switch on/off the socket and control various settings.

On the **Home** page, tap **All devices** > **Iconic Socket** to access the control panel.

On the control panel page, you can see the following:

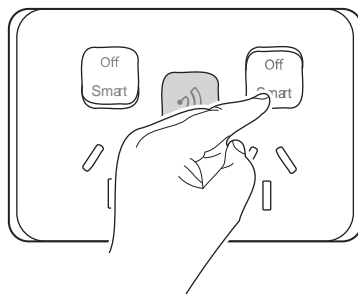
- The current state of the socket (A)
- Schedule, page 14 (B)
- Settings, page 23 (C)



### Switching on/off the device using app

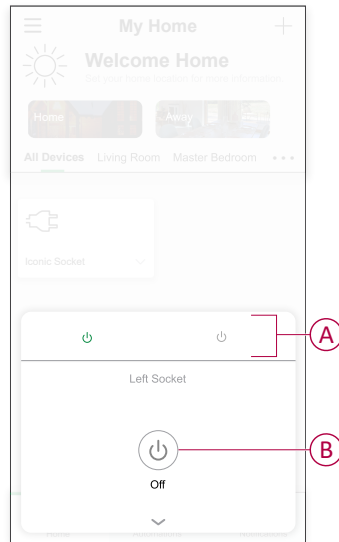
By using the Wiser app, you can switch on/off the device.


**NOTE:** Using the Wiser app, you can only operate the socket remotely if the rocker switch is in a smart state.



1. In home page, next to device name, tap the ▼ for common function.
2. Select the left/right socket (A).

3. Tap the power button (B) to switch on/off.



**TIP:** You can also navigate to the control panel, page 13 of the device and tap  to switch on/off the socket .

## Setting up a schedule

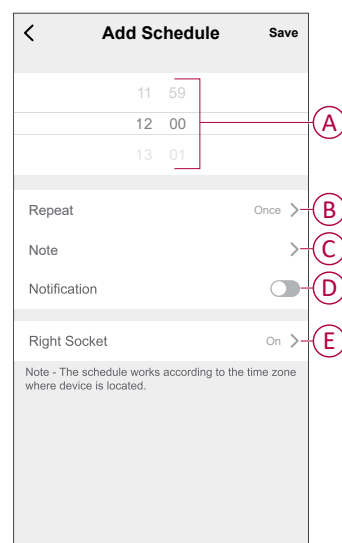
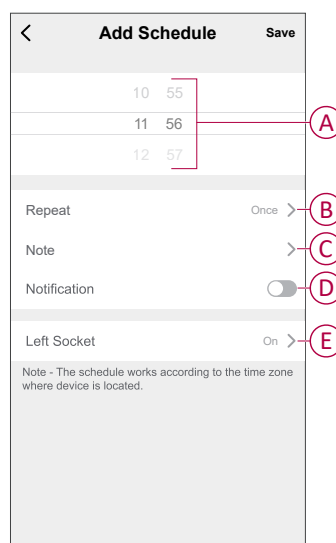
The device can be fully controlled by schedule. Once the schedule is set, the device operates at a given time.

1. In the device control panel, tap **Schedule** > **Left Socket/Right Socket**.

2. Tap **Add Schedule** and set the time (A).

**NOTE:** The schedule works according to the time zone where the device is located.

3. Tap **Repeat** (B) to select the days you want to set the schedule.
4. Tap **Note** (C), enter the note and tap **Confirm**.
5. Tap the toggle switch (D) to turn on the **Notification** for the schedule. The app will send a notification that the scheduled task is executed at the scheduled time.
6. Tap **Left Socket/Right Socket** (E) and select any option, **On** or **Off**.






7. Tap **Save**

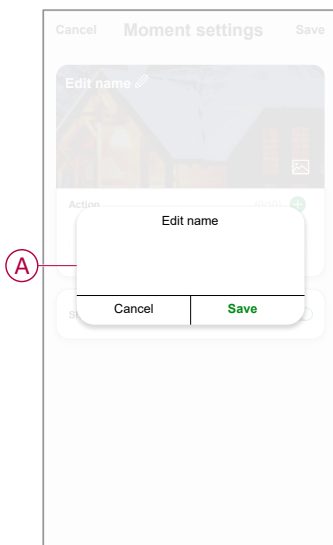
## Creating a moment

A Moment allows you to group multiple actions that are usually done together. Using the Wiser app, you can create moments based on your needs (such as movie night).


To create a moment:

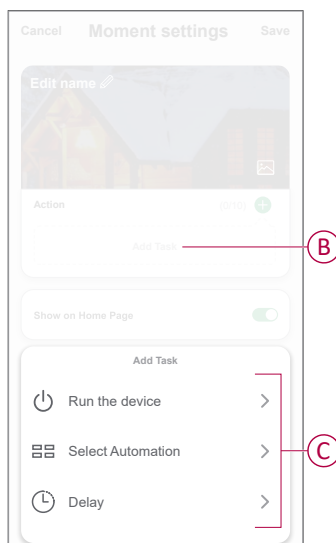
1. On the **Home** page, tap .
2. Go to **Moment** > **+** to create a moment.
3. Tap **Edit name** , enter the name of the moment (A) and tap **Save**.

**TIP:** You can choose the cover image that represents your moment by tapping .

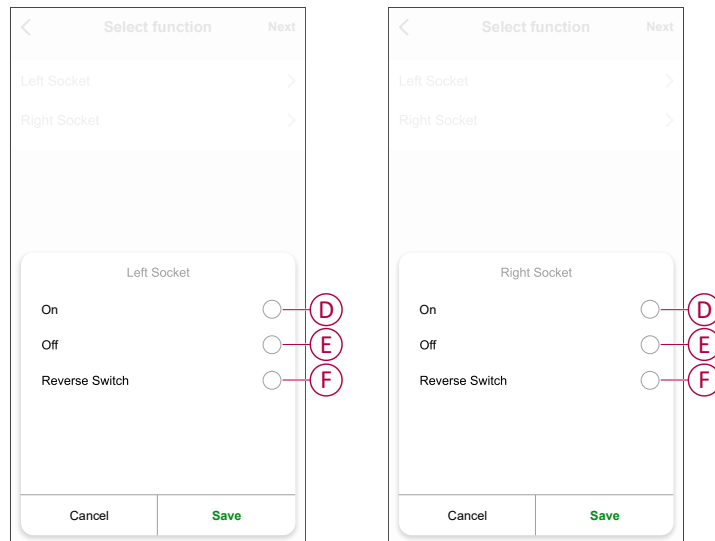


4. In the **Action** section, tap **Add task** (B) to open the slide-up menu.
5. In the **Add task** menu, you can do either or all of the following actions (C):
  - **Run the device:** select the devices that you want in a moment.
  - **Select Automation:** select the automation that you want to enable or disable.
  - **Delay:** set the delay time.

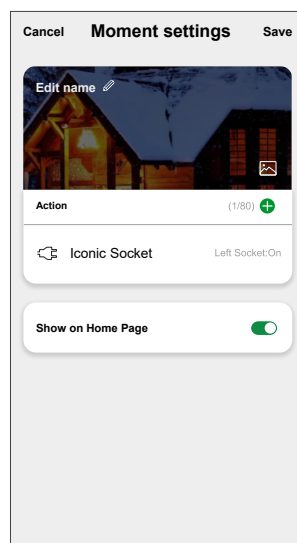
**NOTE:** You can add one or more actions using .



6. Tap **Run the device > Iconic Socket**, tap on the required socket (**Left Socket/Right Socket**) to select either or all of the functions to add in the moment:
- **On**: switch on the respective socket (D).
  - **Off**: switch off the respective socket (E).
  - **Reverse Switch**: toggle the last state of the socket (F).




7. Set all actions and tap **Save**.



## Editing a moment


1. On the **Moment** tab, locate the moment you want to edit and tap ●●●.
2. On the **Edit** page, you can tap each item (such as dimmer, shutter, delay, temperature, etc.) to change the settings.

### TIP:

- You can add one or more actions using .
- To delete an existing action, slide each item towards left and tap **Delete**.

## Deleting a moment

To delete a moment:


1. On the **Moment** tab, locate the moment that you want to delete and then tap .
2. Tap **Delete** and then tap **Ok**.


**NOTE:** After deleting a moment, the device action can no longer be triggered.

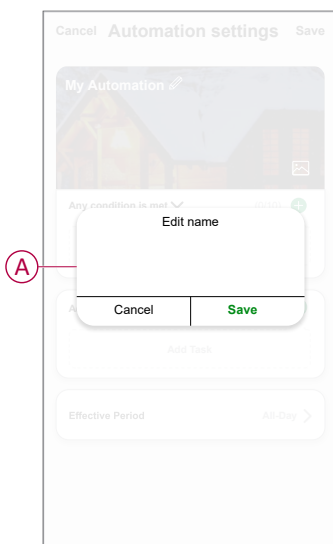
## Creating an automation

An automation allows you to group multiple actions that are usually done together, triggered automatically or at scheduled times. By using the Wiser app, you can create automations based on your needs.

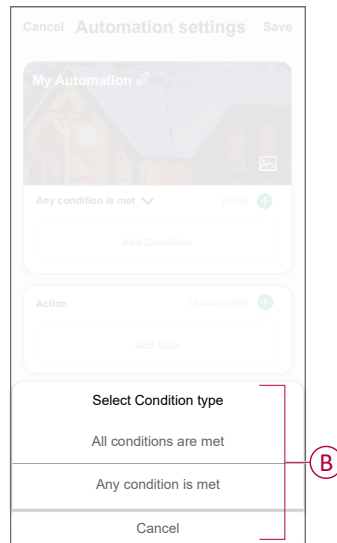
To create an automation:

1. On the **Home** page, tap the .
2. Go to **Automation** > **+** to create an automation.
3. Tap **Edit name**, enter the name of the automation (A) and tap **Save**.


**TIP:** You can choose the cover image that represents your automation by tapping .

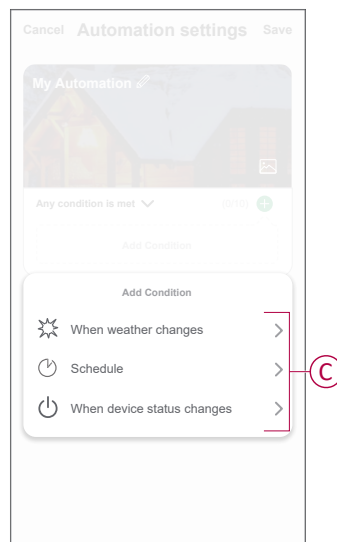


4. Tap **Any condition is met** to select any one of the condition type (B):
  - **All conditions are met:** automation is triggered when all the conditions are met.
  - **Any condition is met :** automation is triggered when at least one condition is met.




5. Tap **Add Condition** to open the slide-up menu.
6. In the **Add Condition** menu, you can do either or all of the following options (C):
  - **When weather changes:** select the various weather settings.
  - **Schedule:** set the time and day.
  - **When device status changes:** select the device and it's function.

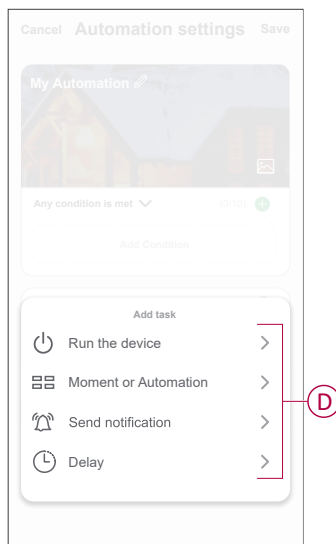
Note: You can add one or more conditions using .



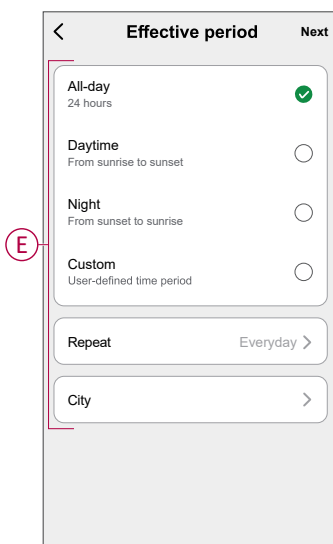
7. Tap **When device status changes > Iconic Socket** and select either or all the functions:
  - **Left Socket:** turn on/off the left socket.
  - **Right Socket:** turn on/off the right socket.
8. Tap **Add task** to open the slide-up menu.

9. In the **Add task** menu, you can do either or all of the following options (D):
- **Run the device:** select the devices that you want to be triggered.
  - **Moment or Automation:** select the moment which you want to trigger or select the automation that you want to enable or disable.
  - **Send notification:** turn on notification for the automation.
  - **Delay:** set the delay time.

**NOTE:** You can add one or more actions using .



10. Tap on **Effective period** to set the time range for the automation. You can select any one of the following (E):
- **All-day:** 24 hours
  - **Daytime:** from sunrise to sunset
  - **Night:** from sunset to sunrise
  - **Custom:** user defined time period




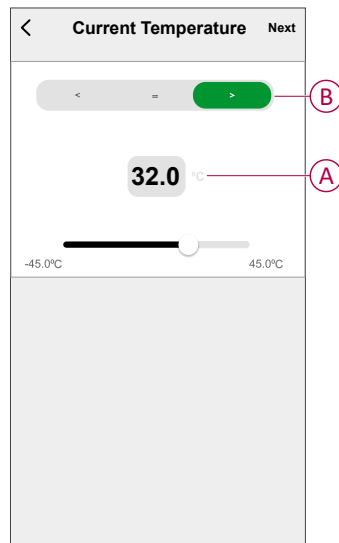
11. Set all the actions and conditions, then tap **Save**.

Automation is now available under **Automation** tab. Use toggle switch to enable/disable automation.

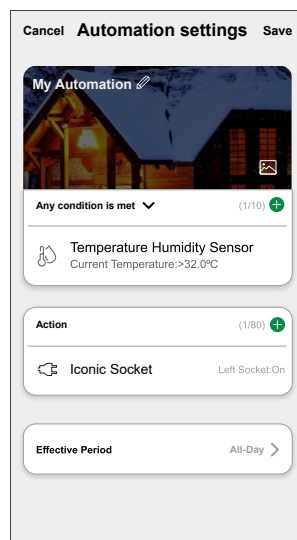
## Example of an automation

This demonstration shows you how to create an automation to turn on the cooler connected to left iconic socket when the temperature is above 32 ° C.

1. Go to **Automation** > **+** to create an automation.
2. Tap **Edit name**, enter the name of the automation and tap **Save**.  
**TIP:** You can choose the cover image that represents your automation by tapping .
3. Tap **Add Condition** > **When device status changes** > **Temperature Humidity Sensor** > **Current Temperature**.
4. Set the temperature to 32 ° C (A) and select greater than (>) (B), then tap **Next**.



5. Tap **Add task** > **Run the device** > **Iconic Socket** > **Left Socket** > **On** > **Save** > **Next**.
6. In the **Automation Settings** page, tap **Save**.




Once the automation is saved, it is visible on the **Automation** tab. You can tap the toggle switch on the automation to enable/disable it.



## Editing an automation

1. On the **Automation** tab, locate the automation you want to edit and tap ●●●.
2. On the **Edit** page, you can tap each item (such as dimmer, shutter, delay, temperature, etc.) to change the settings.

### TIP:

- You can add one or more condition or actions using .
- To delete an existing condition or action, slide each item towards left and tap **Delete**.


## Deleting an automation

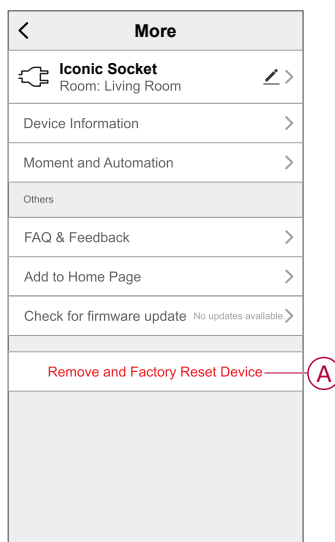
1. On the **Automation** tab, locate the automation that you want to delete and then tap ●●●.
2. Tap **Delete** and then tap **Ok**.

**NOTE:** After deleting an automation, the device action can no longer be triggered.

## Removing the device

Using the Wiser app, you can remove a device from the device list.

1. On the **Home** page, tap **All devices** > **Iconic Socket**.
2. Tap  to display more details.
3. Tap **Remove and Factory Reset Device (A)**.



**TIP:** On the **Home** page, tap and hold the **Iconic Socket** to remove the device.

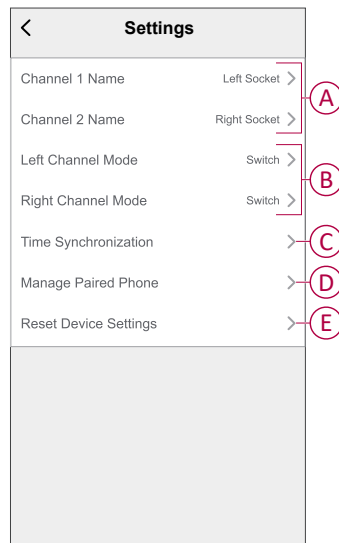
**NOTE:** By removing the device, you will reset the device. If you still have a problem with the reset, then refer to [resetting the device](#), page 29.

# Bluetooth Mode

## Socket settings

Using the Wiser app, you can manage the socket modes and settings.

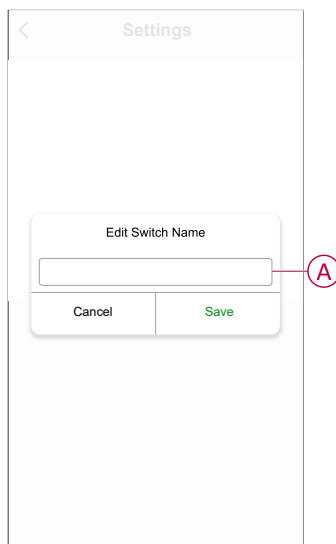
1. On the **Home** page, tap **All devices** > **Iconic Socket**.
2. Tap **Settings** and select any of the following:
  - Channel Name, page 23 (A)
  - Channel Mode, page 23 (B)
  - Synchronization Time, page 24 (C)
  - Manage Paired Phone, page 24 (D)
  - Reset Device Settings, page 25 (E)



## Channel name

You can rename the socket using the Wiser app.

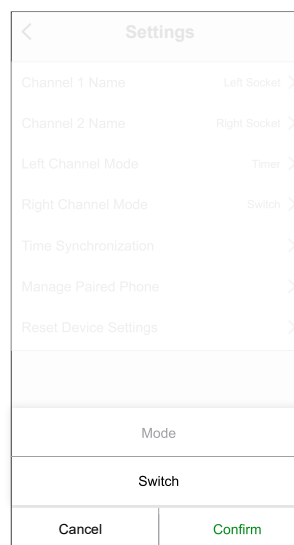
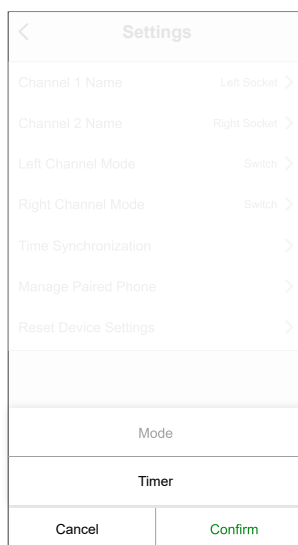
- On the **Settings** page, select the channel:
  - Channel 1 Name:** to rename the left socket.
  - Channel 2 Name:** to rename the right socket.
- Enter the name (A) and tap **Save**.



## Channel mode

Using mode setting, timer can be set to turn off the device after a set period of time or you can set it as a switch to turn on/off manually.

- On the **Settings** page, tap on respective channel.
- Select the mode.
  - Switch:** turn on/off the device.
  - Timer:** set the timer to turn off the device. Refer using mode timer, page 27.

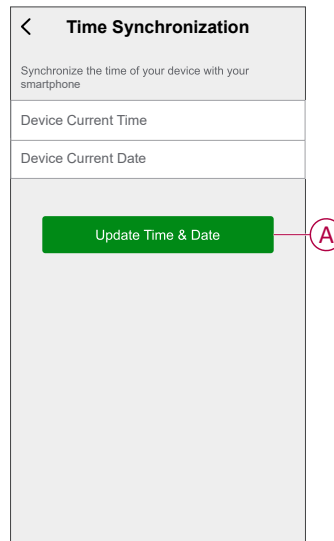


- Tap **Confirm**.

## Synchronization Time

Using Wiser app, you can synchronize the time of the device with your smartphone.

On the **Settings** page, tap **Synchronization Time** > **Update Time & Date** (A). This allows the device time to sync with smartphones in real-time.

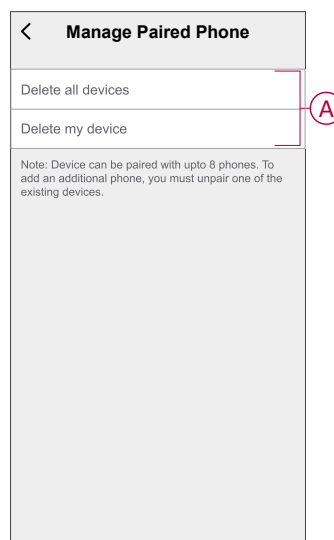


## Manage Paired Phone

Using Wiser app, you can view or delete paired phones.

On **Settings** page, tap **Manage Paired Phone** and select any of the following (A):

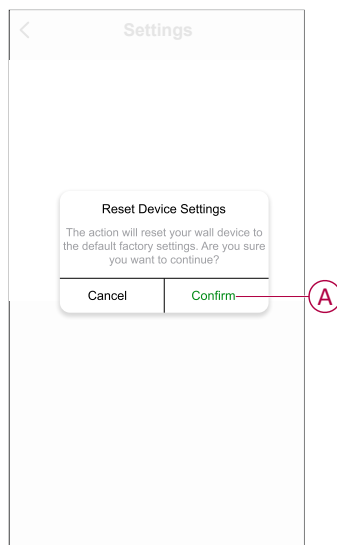
- **Delete all Devices:** the device is removed from all paired phones.
- **Delete my Device:** the device is removed from current phone.



## Reset device settings

Using Wiser app, you can reset the device settings to default.

On **Settings** page, tap **Reset device settings**.  
Read the information and tap **Confirm** (A).



**NOTE:** This action will reset the device to default factory settings.

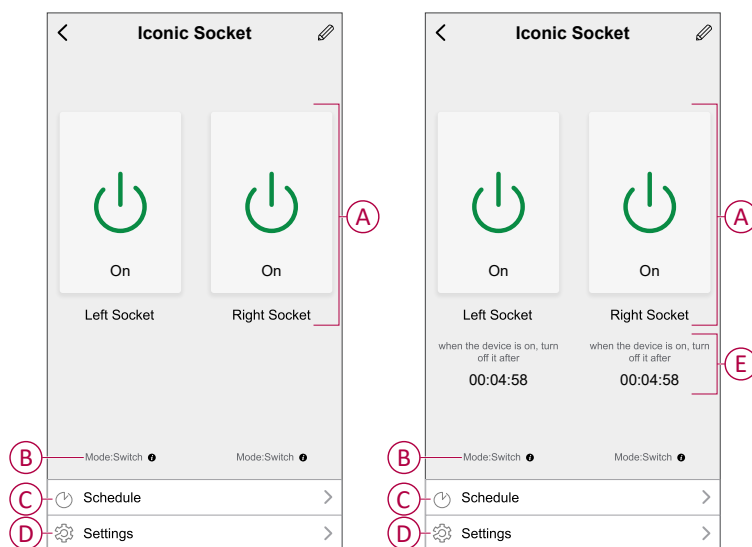
## Using the device

The Control Panel allows you to switch on/off and control various settings.

On the **Home** page, tap **All devices** > **Iconic Socket** to access the control panel.

On the control panel page, you can see the following:

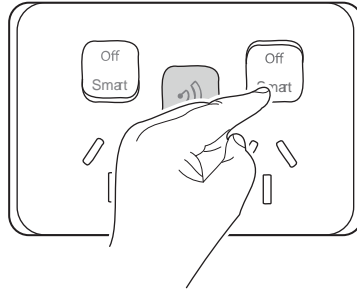
- The current state of the socket (A)
- Mode indicator (B)
- Settings, page 22 (C)
- Schedule, page 28 (D)
- Timer count down, page 27 (E)



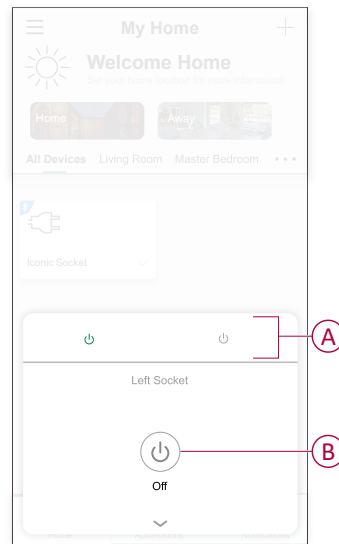
## Switching on/off the device using app


By using the Wiser app, you can switch on/off the device.

**NOTE:** The socket can be remotely operated using Wiser app only when the rocker switch is in smart state.



1. In home page, next to device name, tap the ▼ for common function.
2. Select the left/right socket (A).
3. Tap the power button (B) to switch on/off.



**TIP:** You can also navigate to the control panel, page 25 of the device and tap  to switch on/off the socket .

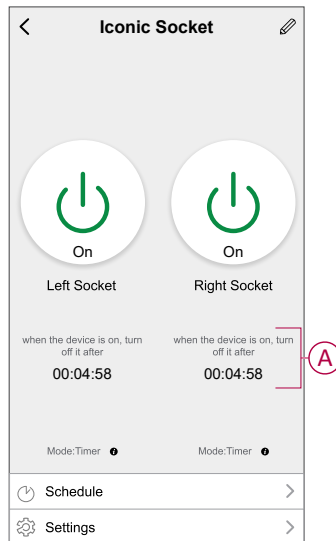
**NOTE:** During timer mode, the socket automatically turns off after a specified period of time. Refer timer mode, page 27.

## Setting timer mode

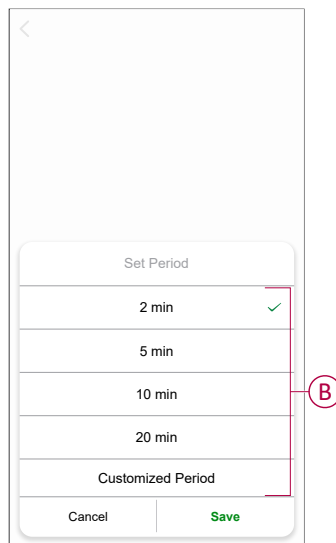
You can set the timer to turn off the device after a certain period of time.

In Wiser app, change the mode from switch to timer, refer to [mode settings](#), page 23

1. On the device control panel page, tap timer (A) for the slide-up menu.



2. In the slide-up menu select the required **Set Period** (B) and tap **Save**.

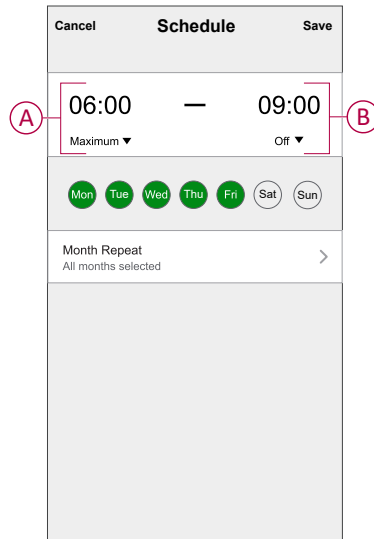


Once the countdown timer reaches zero, the device turns off.

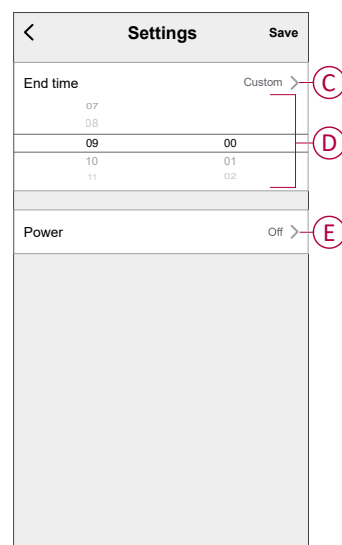
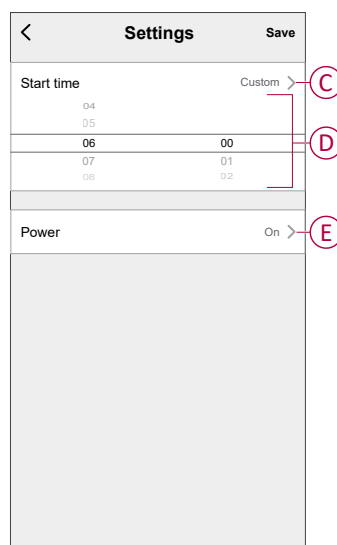
## Creating a schedule

Using a schedule, you can control and trigger the device. The system will follow the active schedule once it has been set. You can create or modify schedules at any time.

1. On the **Home** page, tap **All devices > Iconic Socket**.
2. Tap **Schedule**, tap on the socket for which you need to set the schedule then tap **Add schedule**.
3. Tap (A) to set the start time and tap (B) to set end time.



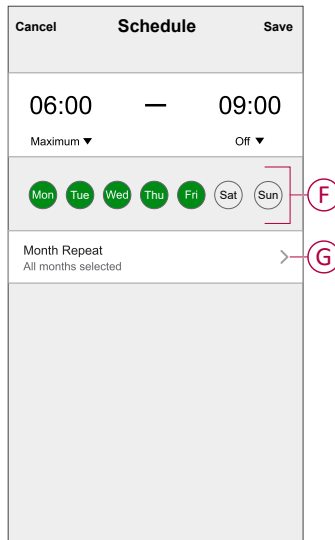
4. Tap (C) and select any one of the following:
  - **Sunrise**: schedule will be triggered at sunrise.
  - **Sunset**: schedule will triggered at sunset.
  - **Custom**: to set the required start/end time (D).
5. Tap (E) and select any one of the following:
  - **On**: to turn on the device.
  - **Off**: to turn off the device.



6. Select the days you want to repeat the schedule (F).




7. Tap **Month Repeat** (G) to set the months you want to repeat the schedule.

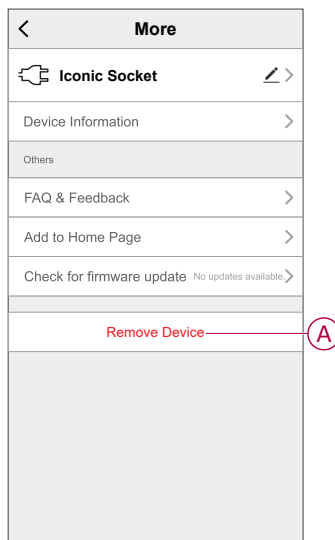


8. Tap **Save**.

## Removing the device

Using the Wiser app, you can remove a device from the device list.

- On the **Home** page, tap **All devices** > **Iconic Socket**.
- Tap  to display more details.
- Tap **Remove device** (A) and select any of the following:
  - Disconnect**: to remove the device.
  - Disconnect & Erase Data**: to remove the device and erase data.



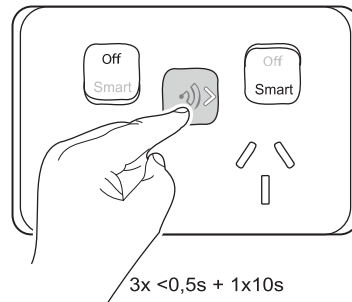
**TIP:** On the **Home** page, tap and hold the **Iconic Socket** to remove the device.

## Resetting the device manually

You can reset the device to factory default manually.

Short press the touch button three times ( $<0,5$  s) and then long press the touch button once ( $>10$  s).

After 10 s, release the touch button when the LED starts blinking white.



The device is in reset mode. It is reset to the factory settings after 10 seconds.

## LED Indication

### Pairing

User Action	LED Indication	Status
Press the touch button 3 times	Left and right LED blinks white.	Zigbee pairing mode is active for 30 seconds.
	White LED blinks left and right alternately.	Bluetooth pairing mode is active for 30 seconds.

### Resetting

User Action	LED Indication	Status
Press the push-button 3 times and long press once for > 10 s.	White LED blinks faster.	The device is in reset mode. It is reset to the factory settings after 10 seconds.

### Changing protocol

User Action	LED Indication	Status
Short press the push-button 3 times and long press once for > 20 s.	White LED blinks rapidly.	Pairing mode changes from zigbee to bluetooth or bluetooth to zigbee

## Troubleshooting

Error	Possible cause	Solution
The device is not ready to pair after the device is removed from the app.	The device is not reset correctly.	Reset to factory default settings, refer to Resetting the device manually, page 29.

## Technical Data

Nominal voltage	AC 240 V ~, 50 Hz
Max load rating	10 A
LED indicator	Yes
Supported protocols	Zigbee, BLE
Compliance	Safety: AS/NZS 3112,AS/NZS 60669.2.1 EMC: AS/NZS 60669.2.1 RF: AS/NZS 4268
Power failure data retention	Internal date/time retained for at least 6 hrs. Settings preserved indefinitely.
Environmental rating	IP20 (designed for indoor use only)
Operating humidity	5%–90% RH, non-condensing
Specifications typical at 25 °C	

## Compliance

### Compliance information for Green Premium products

Find and download comprehensive information about Green Premium products, including RoHS compliance and REACH declarations as well as Product Environmental Profile (PEP) and End-of-Life instructions (EOL).

<https://checkaproduct.se.com/>



### General information about Green Premium products

Click the link below to read about Schneider Electric's Green Premium product strategy.

<https://www.schneider-electric.com/en/work/support/green-premium/>



## Trademarks

This guide makes reference to system and brand names that are trademarks of their relevant owners.

- Zigbee® is a registered trademark of the Connectivity Standards Alliance.
- Bluetooth® is a registered trademark of the Bluetooth Special Interest Group (SIG).
- Apple® and App Store® are brand names or registered trademarks of Apple Inc.
- Google Play™ Store and Android™ are brand names or registered trademarks of Google Inc.
- Wi-Fi® is a registered trademark of Wi-Fi Alliance®.
- Wiser™ is a trademark and the property of Schneider Electric, its subsidiaries and affiliated companies.

Other brands and registered trademarks are the property of their respective owners.

Schneider Electric (NZ) Ltd  
Level 2, Building 6, 64 Highbrook Drive  
East Tamaki, Auckland 2013  
New Zealand

Customer Care: 0800 741 303

[www.pdl.co.nz](http://www.pdl.co.nz)

As standards, specifications, and design change from time to time,  
please ask for confirmation of the information given in this publication.

© 2023 – 2023 Schneider Electric. All rights reserved.

DUG\_Iconic Connected Twin 10 A Socket\_PDL-00