

Wiser Micro Module Blind

Device user guide

Information about features and functionality of the device.

05/2023



Legal Information

The Schneider Electric brand and any trademarks of Schneider Electric SE and its subsidiaries referred to in this guide are the property of Schneider Electric SE or its subsidiaries. All other brands may be trademarks of their respective owners.

This guide and its content are protected under applicable copyright laws and furnished for informational use only. No part of this guide may be reproduced or transmitted in any form or by any means (electronic, mechanical, photocopying, recording, or otherwise), for any purpose, without the prior written permission of Schneider Electric.

Schneider Electric does not grant any right or license for commercial use of the guide or its content, except for a non-exclusive and personal license to consult it on an "as is" basis. Schneider Electric products and equipment should be installed, operated, serviced, and maintained only by qualified personnel.

As standards, specifications, and designs change from time to time, information contained in this guide may be subject to change without notice.

To the extent permitted by applicable law, no responsibility or liability is assumed by Schneider Electric and its subsidiaries for any errors or omissions in the informational content of this material or consequences arising out of or resulting from the use of the information contained herein.

Table of Contents

Safety information	4
Wiser Micro Module Blind	5
For your safety	5
About the device	6
Installing the device	6
Testing the device	7
Pairing the device	7
Pairing device manually	8
Pairing device with auto scan	10
Configuring the device	11
Changing the device icon	11
Renaming the device	12
Changing the device location	12
Calibration	13
Removing the device	16
Resetting the device	16
Using the device	17
Manual operation	17
Opening/Closing the shutter using app	17
Setting up a schedule	18
Creating a moment	19
Creating an automation	21
LED indication	27
Troubleshooting	27
Technical data	28
Compliance	29
Compliance information for Green Premium products	29
Trademarks	29

Safety information

Important information

Read these instructions carefully and look at the equipment to become familiar with the device before trying to install, operate, service, or maintain it. The following special messages may appear throughout this manual or on the equipment to warn of potential hazards or to call attention to information that clarifies or simplifies a procedure.



The addition of either symbol to a “Danger” or “Warning” safety label indicates that an electrical hazard exists which will result in personal injury if the instructions are not followed.



This is the safety alert symbol. It is used to alert you to potential personal injury hazards. Obey all safety messages that accompany this symbol to avoid possible injury or death.

DANGER

DANGER indicates a hazardous situation which, if not avoided, **will result in** death or serious injury.

Failure to follow these instructions will result in death or serious injury.

WARNING

WARNING indicates a hazardous situation which, if not avoided, **could result in** death or serious injury.

CAUTION

CAUTION indicates a hazardous situation which, if not avoided, **could result in** minor or moderate injury.

NOTICE

NOTICE is used to address practices not related to physical injury.

Wiser Micro Module Blind



PDL5015WBZ

For your safety

⚡⚠ DANGER

HAZARD OF ELECTRIC SHOCK, EXPLOSION, OR ARC FLASH

Safe electrical installation must be carried out only by skilled professionals. Skilled professionals must prove profound knowledge in the following areas:

- Connecting to installation networks.
- Connecting several electrical devices.
- Laying electric cables.
- Safety standards, local wiring rules and regulations.

Failure to follow these instructions will result in death or serious injury.

⚠ DANGER

HAZARD OF ELECTRIC SHOCK

- Make sure that the terminal connection area does not come in contact with the metallic parts of any device installed in the same location.
- Do not short the outputs to neutral.
- The motor contacts and live conductor connection must be separated from one another by a 240 VAC basic insulation.

Failure to follow these instructions will result in death or serious injury.

⚠ WARNING

HAZARD OF ELECTRIC SHOCK

- Observe the regulations for working on live parts.
- Only actuate the device buttons using insulated auxiliary equipment that meets the requirements of EN 60900.

Failure to follow these instructions can result in death, serious injury, or equipment damage.

About the device

The Wiser Micro Module Blind (hereinafter referred to as **module**) combines the advantages of smart shutter functionality with ordinary mechanical double push-button switches. It transforms a conventional switch into a connected device that you can control from the switch or through the Wiser app. Relay contacts are mechanically locked against each other to prevent simultaneous triggering of the two relay outputs.

NOTE: Do not control any devices that depend on a permanent power supply.

Additional features:

- Remote control with maximum of 10 mechanical double push-button switches.
- Protection of the motor against damage with two mutually mechanically and electronically locked relay contacts.
- Electronic overload protection, overheating protection and short-circuit protection.
- Setting a time schedule.

Installing the device

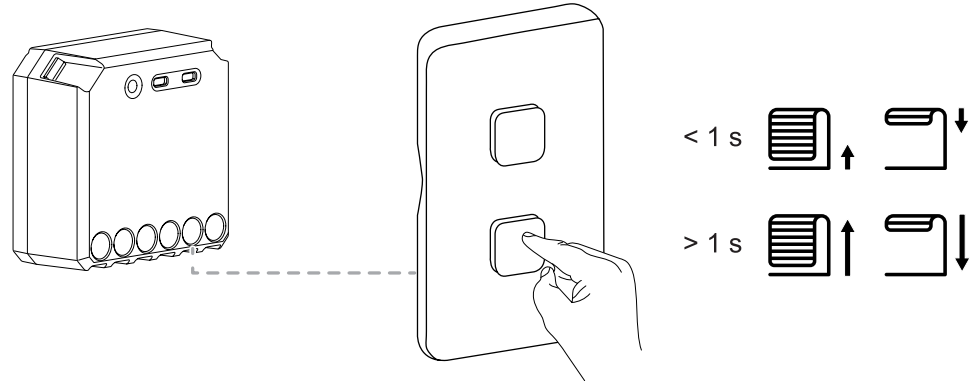
Refer to the installation instruction supplied with this product.

See *Wiser Micro Module Blind*.

Testing the device

Before using the module, manually test the module and make sure that it works when connected to the shutter.

- Short press the push button once, the shutter opens/closes gradually.
- Press and hold the push button, the shutter opens/closes fully, record the time it takes to fully open/close the shutter.




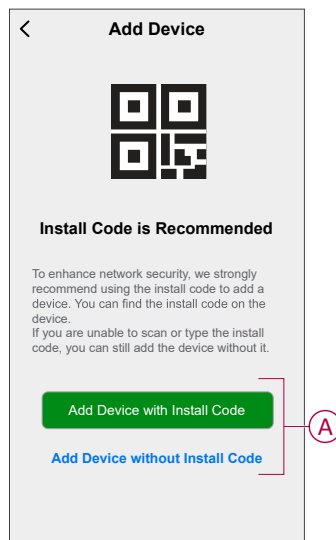
Pairing the device

Using the Wiser app, first pair your device with the **Gateway/Hub** to access and control the device. You can either add the device manually or do an auto-scan to pair it.

Pairing device manually

To pair the device manually:

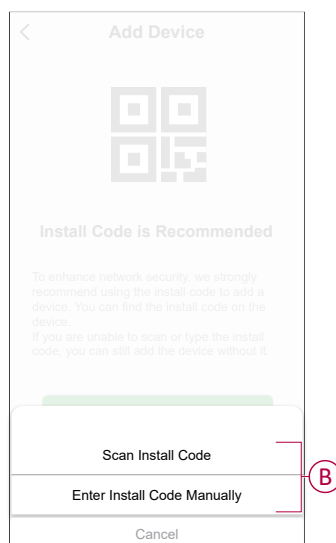
1. On **Home** page, tap **+**.
2. Tap  and select the **Wiser Hub**
3. Select an option to add the device (A):
 - **Add Device with Install Code**
 - **Add Device without Install Code**



TIP: It is recommended to add the device with install code.

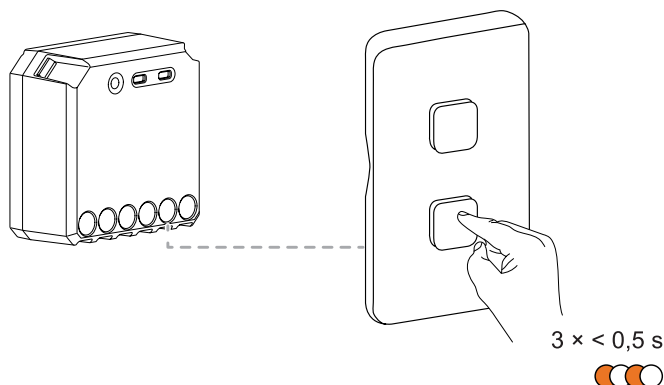
4. To pair the device with an install code, tap **Add Device with Install Code** to display the slide-up menu. Select any one of the options (B):
 - **Scan Install Code:** you can scan the device for the install code.
TIP: You can find the QR code on the rear side of the device.
 - **Enter Install Code Manually:** you can manually enter the install code from the device.
TIP: You can find the install code on the rear side of the device.

After scanning or entering the install code, proceed to **Step 6**.



5. To pair the device without install code, tap **Add Device without Install Code**.

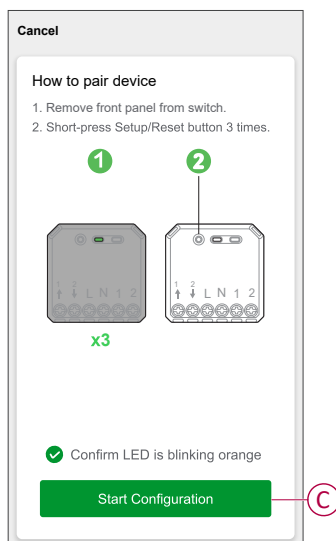
6. Remove front panel from switch to access the device if you place the module behind a mechanical push button.
7. Short press the push button 3 times.



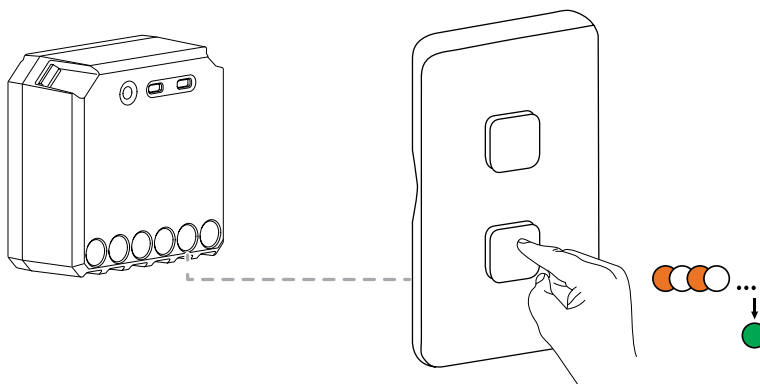
The LED blinks orange.

NOTE: If the module is located behind the push button, the status LED is not visible.

8. In the app, select **Confirm LED is flashing orange** and tap **Start Configuration (C)**.



9. After a few seconds, a solid green LED indicates that the device is successfully paired to the Hub.



10. After the device is added in the app, tap **Done**.

Pairing device with auto scan

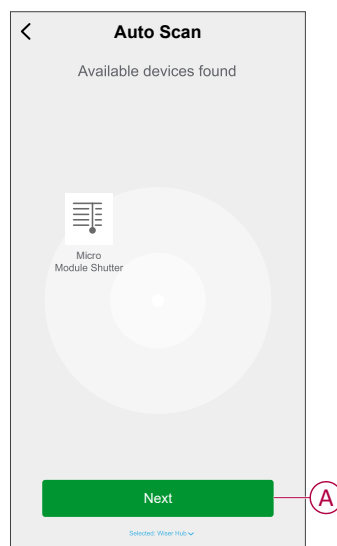
Pairing the device with auto scan automatically discovers the device when the corresponding device is powered on.

To pair the device:

1. On the **Home** page, tap **+**.
2. Tap **Auto scan** tab and tap **Confirm**.
3. If you have multiple hubs, do Step 4 or proceed to Step 5.
4. Tap **Select hub** and select the Wiser hub from the slide-up menu.
5. Short press the setup/reset button 3 times (< 0,5 s) and wait for a few seconds until the device search is complete.
The LED blinks orange.

TIP: If you want to pair multiple devices at once, perform step 5 on each device and wait for a few seconds for them to be detected.

6. Tap **Next (A)** and select **Micromodule Shutter**.





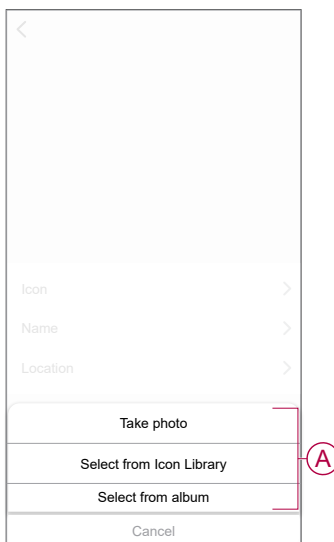
7. Once the device is added successfully, tap **Done**.

Configuring the device

Changing the device icon



You can change the device icon using the Wiser app.

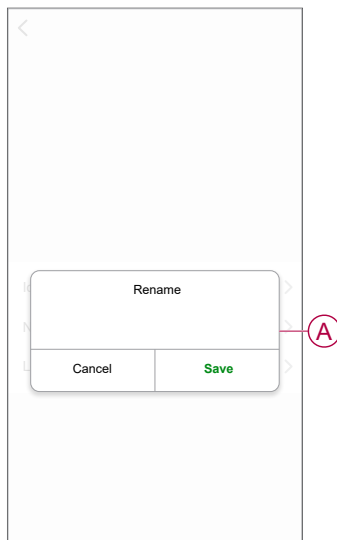
1. On the **Home** page, select the device for which you wish to change the icon.
2. At the top-right corner of the screen, tap .
3. Tap edit  next to the device name.
4. Tap **Icon** to view the menu.
5. In the slide-up menu, select any one of the following (A) to change the device icon:
 - **Take photo** - allows you to take a photo with your device camera.
 - **Select from Icon Library** - allows you to select an icon from the app library.
 - **Select from Album** - allows you to select a photo from the mobile gallery.



Renaming the device



You can rename the device using the Wiser app.

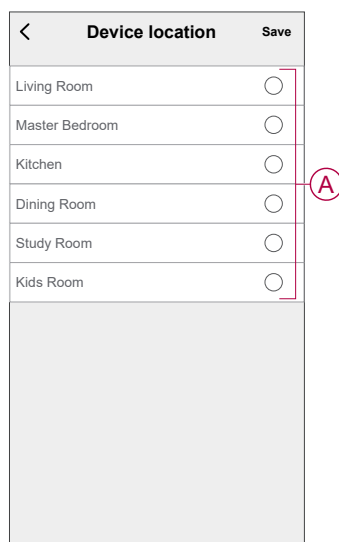
1. On the **Home** page, select the device for which you wish to rename.
2. At the top-right corner of the screen, tap .
3. Tap edit  next to the device name.
4. Tap **Name**, enter the new name (A) and then tap **Save**.



Changing the device location

You can change the device location using the Wiser app.

1. On the **Home** page, select the device for which you wish to change the location.
2. At the top-right corner of the screen, tap .
3. Tap edit  next to the device name.
4. Tap **Location**.
5. Select the desired location from the list (A) and then tap **Save**.



Calibration

The shutter control is supplied in an uncalibrated state. Each shutter motors vary in the speed at which they open and close (edge to edge). Therefore, the opening/closing time of the shutter must be determined in the app.

NOTE:

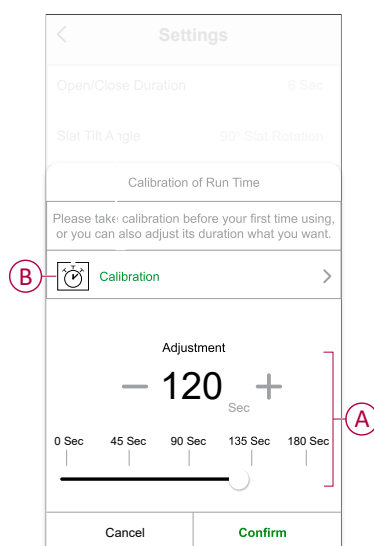
- Before using this device for the first time, it must be calibrated, or you can adjust its duration manually.
- Do not use the shutter either manually or on the app during calibration to avoid interruption.

Shutter calibrating

To calibrate the run time manually:

1. On the device control panel page, tap **Settings > Open/Close Duration**.
2. On the slide-up menu, you can set the run time manually using **+/-** button or using the sliding bar (A) and then tap **Confirm**.

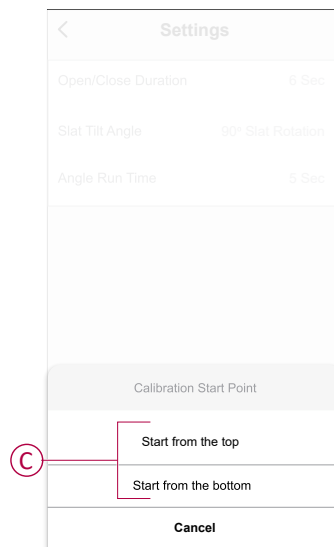
NOTE: To determine the default run time, record the time it takes to fully open/close the shutter (edge to edge).



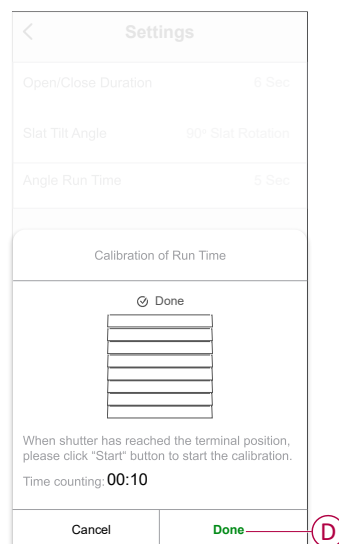
To calibrate the run time using app:

1. In **Settings > Open/Close Duration**, tap **Calibration (B)**.

2. On the slide-up menu, select the calibration start point (C):
 - **Start From The Top**: shutter will move from top to bottom (closing).
 - **Start From the Bottom**: shutter will move from bottom to top (opening).



3. Wait until the shutter reaches its starting point and then tap **Start**.
4. Tap **Done (D)** once the shutter reaches other end.



The app displays the progress of calibration.

5. Once the process is complete, tap **Tilt Calibration** on the pop-up window for **shutter slat calibration**.

Slat tilt angle calibration

To calibrate slat tilt angle:

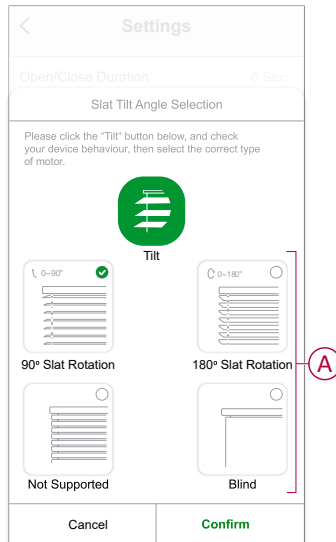
1. On the setting page, tap **Slat Tilt Angle** for slide-up menu.
2. Select tilt type (A) based on the motor installed and then tap **Confirm**

90° Slat Rotation

180° Slat Rotation

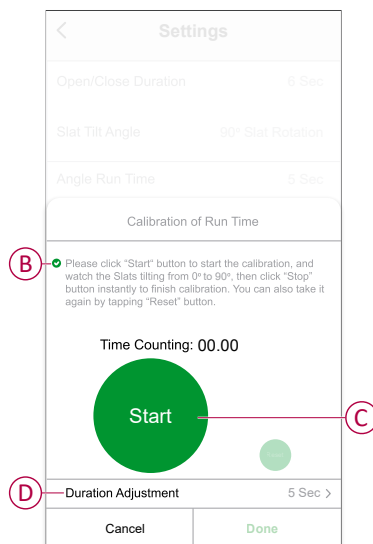
Not Supported

Blind



IMPORTANT: If the shutter is installed with a non rotating slat or blind, the calibration process is complete, and no further steps to follow.

3. Read the pop-up notification and tap **Confirm**.
4. Make sure the shutter is in fully closed state and tap **Prepare**.
5. Select the check box (B) and tap **Start**.



6. Tap **Stop** (C) to finish calibration.


TIP: You can retake the calibration by tapping **Reset**.

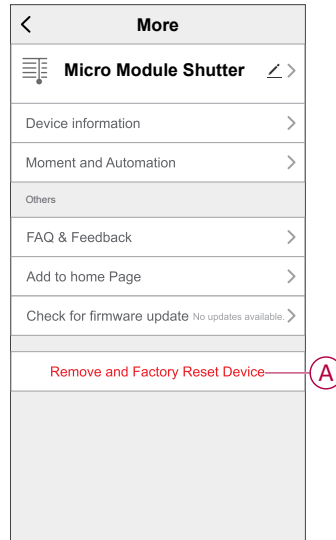
7. Tap **Done** once the process is complete.
The app displays the progress of calibration.

TIP: You can set the run time manually by tapping **Duration Adjustment** (D).

Removing the device

Using the Wiser app, you can remove a device from the device list.
To remove the device:

1. On the **Home** page, tap **All devices > Micromodule Shutter**.
2. Tap  to display more details.
3. Tap **Remove and Factory Reset Device (A)**.



TIP: On the Home page, tap and hold the **Micromodule Shutter** to remove the device.

NOTE:

- Removing the device will reset the module. After reset the LED turns orange indicating that the module is ready to pair with another network.
- If there is a problem while pairing or resetting the module, refer to Resetting the device, page 16.

Resetting the device

You can reset the device to factory default manually.

Short press the push button 3 times and then long press the push button once for 10 s.

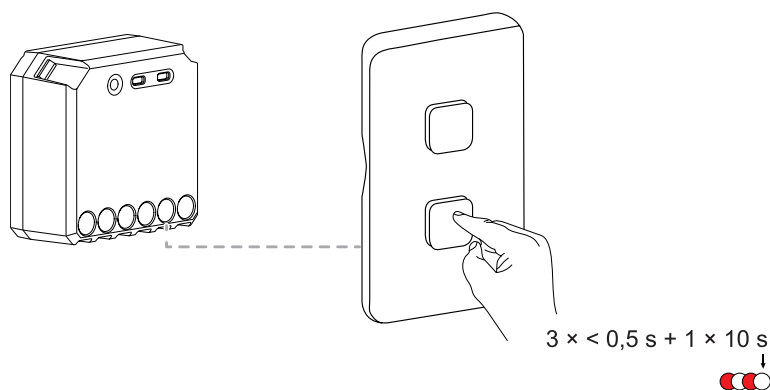
After 10 s, LED starts blinking red then release the operation button.

NOTE: All configuration data, user data, and network data are deleted. After which

- No connectivity to other devices or rooms
- No timer settings

The LED stops blinking upon successful reset of the device.
The module restarts and blinks green for a few seconds.

NOTE: After reset, the LED turns orange indicating that the device is ready for pairing.

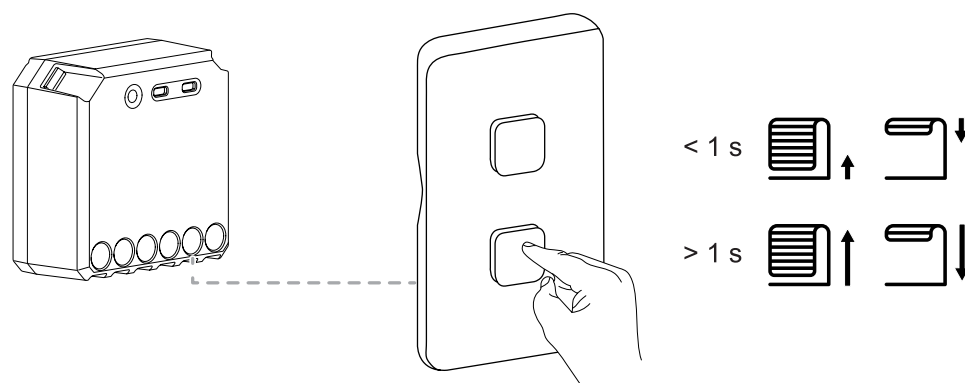


Using the device

Manual operation

When the module is connected to a mechanical double push-button switch, the shutter can be controlled manually.

- Short press the push button once, the shutter opens/closes gradually.
- Press and hold the push button, the shutter opens/closes fully.




Opening/Closing the shutter using app

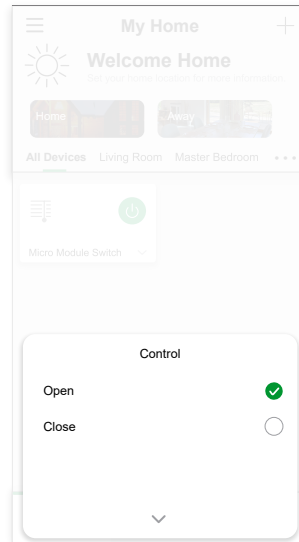
Using the Wiser app shutter can be controlled by following method.

Opening/Closing through home page

To open/close the shutter:

1. On the **Home** page, Tap **All devices**.
2. In **Micromodule Shutter** Tap on .

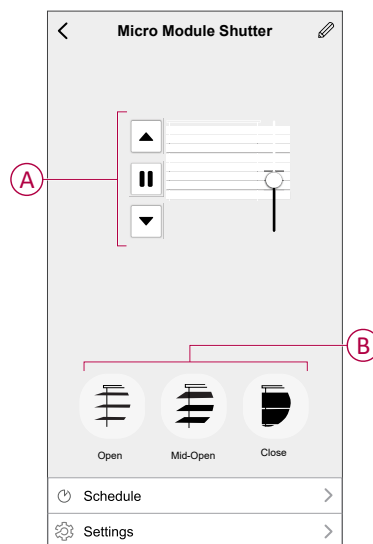
- On the slide up Control menu select **Open/Close** to operate the shutter.



Opening/Closing through device menu

The shutter can be open/close to the desire percentage.
To open/close the shutter:

- On the **Home** page, Tap **All devices** > **Micromodule Shutter**.
- On the device menu, drag the sliding bar (A) up/down to set the desired shutter opening/closing percentage.
- Tap on **Open/Mid-Open/Close** (B) position to tilt the Slat (Only if the shutter is installed with rotation slat).

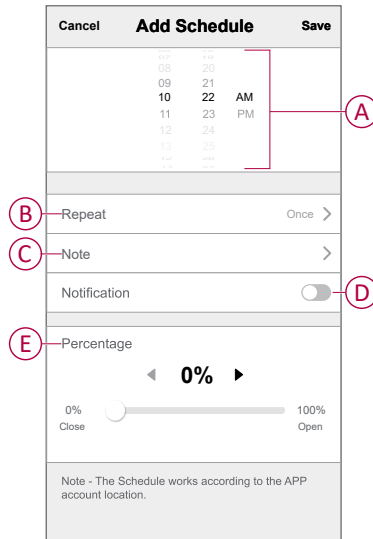


Setting up a schedule

The devices can be fully controlled by schedule. Once the schedule is set, the devices operate at a given time.
To create a schedule:

- On the **Home** page, Tap **All devices** > **Micromodule Shutter**.
- Tap **Schedule** > **Add Schedule** to add a schedule.
- In **Add Schedule** menu, set the time (A).



4. Tap **Repeat** (B) to select the days you want to set the schedule.
5. Tap **Note** (C), enter the note and tap **Confirm**.
6. Tap the toggle switch (D) to turn on the **Notification** for the schedule. The app will send a notification that the scheduled task is executed at the time of schedule.
7. Tap **Control** (E) and select any one option, **Shutter Open / Shutter Close**.

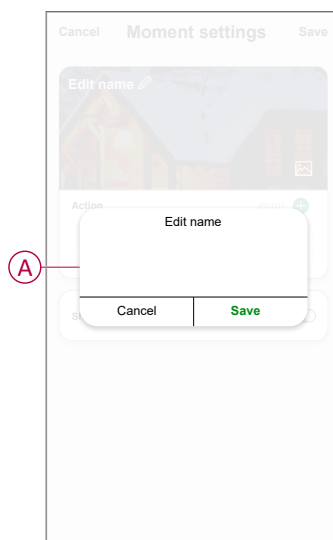


8. Tap **Save**

Creating a moment


A Moment allows you to group multiple actions that are usually done together. Using the Wiser app, you can create moments based on your needs. To create a moment:

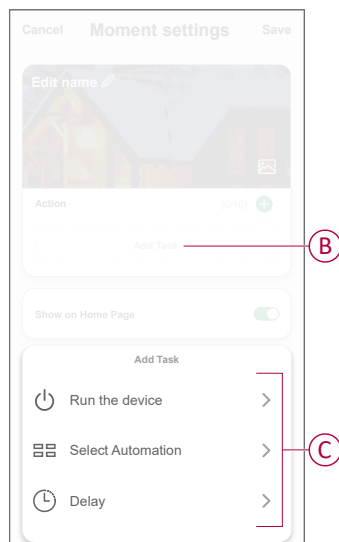
1. On the **Home** page, tap .
2. Go to **Moment** > **+** to create a moment.
3. Tap **Edit name** (A), enter the name of the moment and tap **Save**.
TIP: You can choose the cover image that best represents your moment by tapping .



4. In the **Action** section, tap **Add task** (B) to open the slide-up menu.

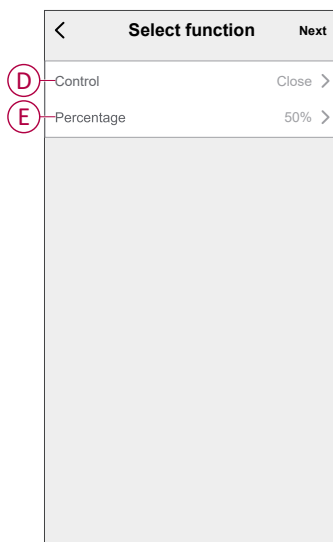
5. In the **Add task** menu, you can do either or all of the following actions (C):
- **Run the device:** select the devices that you want in a moment.
 - **Select Automation:** select the automation that you want to enable or disable.
 - **Delay:** set the delay time.

NOTE: You can add one or more actions using .

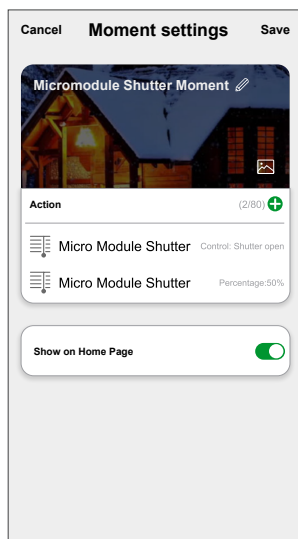


6. Tap **Run the device > Micromodule Shutter** and select either or all the functions to add in the moment:

- **Control > Shutter Open / Shutter Close (D)**
- **Percentage > Set the percentage (E) of moment required.**




- Set all the actions and tap **Save**.



Editing a moment

- On the **Moment** tab, locate the moment you want to edit and tap ●●●.
- On the **Edit** page, you can tap each item (such as dimmer, shutter, delay, temperature, etc.) to change the settings.

TIP:

- You can add one or more actions using .
- To delete an existing action, slide each item towards left and tap **Delete**.

Deleting a moment

To delete a moment:


- On the **Moment** tab, locate the moment that you want to delete and then tap ●●●.
- Tap **Delete** and then tap **Ok**.

NOTE: After deleting a moment, the device action can no longer be triggered.


Creating an automation

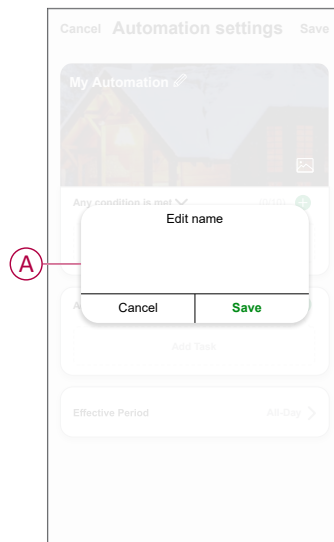
An automation allows you to group multiple actions that are usually done together, triggered automatically or at scheduled times. By using the Wiser app, you can create automations based on your needs.

To create an automation:

- On the **Home** page, tap the .
- Go to **Automation** > **+** to create an automation.

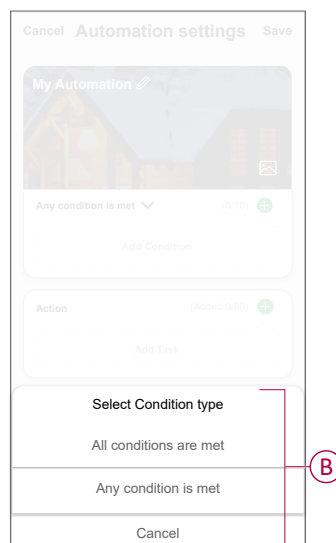
3. Tap **Edit name (A)**, enter the name of the automation and tap **Save**.

TIP: You can choose the cover image that best represents your automation by tapping .



4. Tap **Any condition is met** to select any one of the condition type (B):


- **All conditions are met:** the automation is triggered when all the conditions are met.
- **Any condition is met:** the automation is triggered when at least one condition is met.

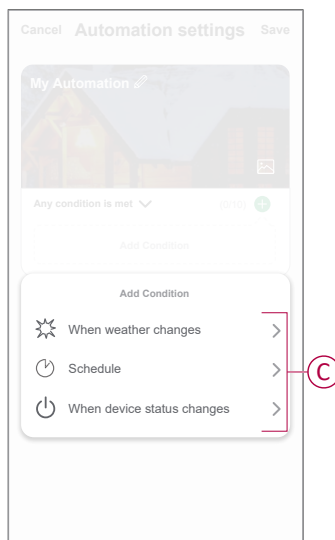


5. Tap **Add Condition** to open the slide-up menu.

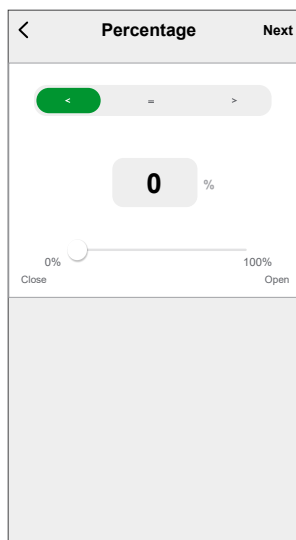
6. In the **Add Condition** menu, you can do either or all of the following options (C):

- **When weather changes** : select the various weather settings.
- **Schedule**: set the time and day.
- **When device status changes**: select the device and it's function.

NOTE: You can add one or more conditions using .




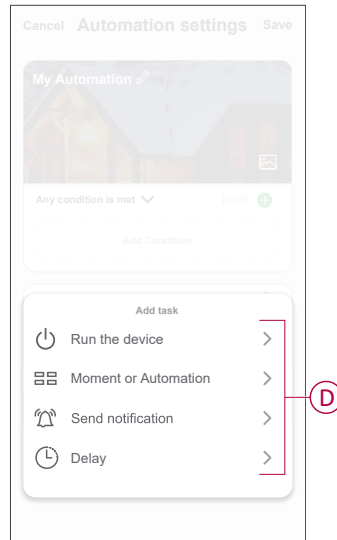
7. Tap **When device status changes > Micromodule Shutter > Percentage** and update the percentage of closing and opening of shutter.



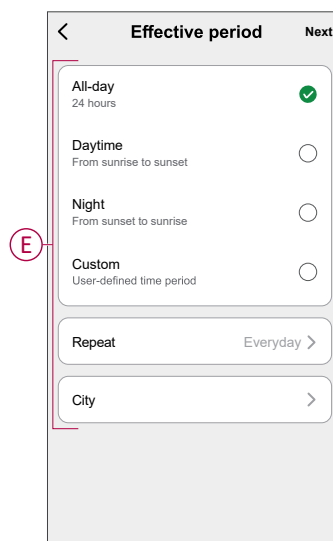
8. Tap **Add task** to open the slide-up menu.

9. In the **Add task** menu, you can do either or all of the following options (D):
- **Run the device:** select the devices that you want to be triggered.
 - **Enable or disable Automation:** select the automation that you want to enable or disable.
 - **Send notification:** turn on notification for the automation.
 - **Delay:** set the delay time.

NOTE: You can add one or more actions using .



10. Tap on **Effective period** to set the time range for the automation. You can select any one of the following (E):
- **All-day** - 24 hours
 - **Daytime** - From sunrise to sunset
 - **Night** - From sunset to sunrise
 - **Custom** - User defined time period




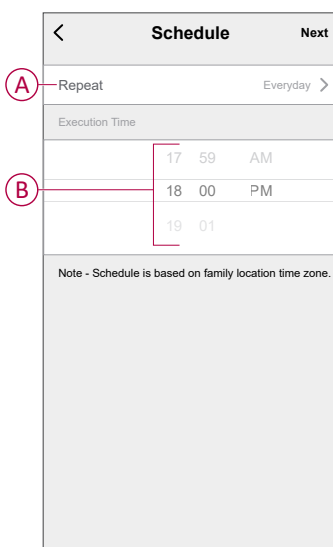
11. Set all the actions and conditions and tap **Save**.

Automation is now available under **Automation** tab. Use toggle switch to enable/disable automation.

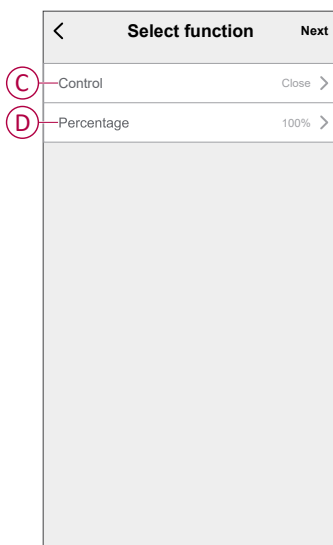
Example of an automation

This demonstration shows you how to create an automation to open the Micromodule Shutter at the scheduled time.

1. Go to **Automation** > **+** to create an automation.
2. Tap **Edit name**, enter the name of the automation and tap **Save**.
TIP: You can choose the cover image that best represents your automation by tapping .
3. Tap **Add Condition** > **Schedule**.
 - Tap **Repeat** (A), select the days you want to set the schedule and tap **Save**.
 - Set the time (B) at which the automation must start and tap **Next**.

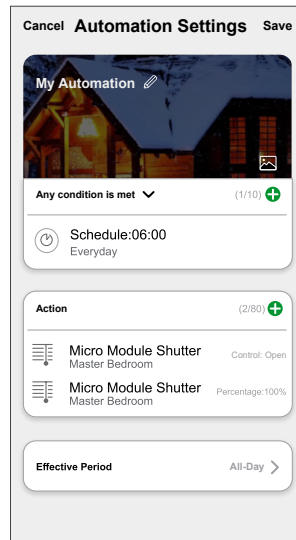


4. Tap **Add task** > **Run the device** > **Micromodule Shutter**.
5. Tap **Control** > **Shutter Open** (C) and tap **Save**.
6. Tap **Percentage** (D) to update the percentage of shutter opening and tap **Save**.



7. Tap **Next**.

8. In the **Automation Settings** page, tap **Save**.




Automation is now available under **Automation** tab. Use toggle switch to enable/disable automation.

Editing an automation

1. On the **Automation** tab, locate the automation you want to edit and tap ●●●.
2. On the **Edit** page, you can tap each item (such as dimmer, shutter, delay, temperature, etc.) to change the settings.

TIP:

- You can add one or more condition or actions using .
- To delete an existing condition or action, slide each item towards left and tap **Delete**.



Deleting an automation

1. On the **Automation** tab, locate the automation that you want to delete and then tap ●●●.
2. Tap **Delete** and then tap **Ok**.



NOTE: After deleting an automation, the device action can no longer be triggered.

LED indication

Pairing the device

User Action	LED Indication	Status
Short press the push button 3 times.	LED blinks orange once per second. 	Pairing mode is active for 30 seconds. When pairing is completed, LED glows green for a few seconds before turning off. 

Resetting the device

User Action	LED Indication	Status
Short press the push button 3 times and hold it down once for > 10 s.	LED blinks red once per second. 	The device is in reset mode. The device then restarts and LED turns orange indicating that the device is ready for pairing. 

Troubleshooting

Symptom	Solution
No shutter movement or uncontrolled shutter movement.	<ul style="list-style-type: none"> • Check power supply. • Check the wiring between module and push-button switch.. • Check the load
The device is not ready to pair after the device is removed from the app.	Reset to factory default settings, refer to Resetting the device , page 16

Technical data

Nominal voltage	AC 220-240 V, 50/60 Hz
Nominal current	4 A, $\cos\phi = 0.6 - 1.0$
Blind channel	1, mechanically and electronically locked against each other
Standby	Max. 0.3 W
Operating Temperature	0 °C to 35 °C
Neutral conductor	Required
Connecting terminals	Max. 2 x 2.5 mm ² , solid or stranded types
Extension connection	Max. 10 mechanical double push-button switches
Length of all cable sections	Max. 50 m for 3-wire NYM cable
Fuse protection	16 A circuit breaker
Operating frequency	2405 - 2480 MHz
Max. radio-frequency power transmitted	<10 mW
IP rating	IP20
Product dimensions (H x W x D)	43 x 43 x 22 mm
Communication protocol	Zigbee 3.0 certified

Compliance

Compliance information for Green Premium products

Find and download comprehensive information about Green Premium products, including RoHS compliance and REACH declarations as well as Product Environmental Profile (PEP) and End-of-Life instructions (EOL).

<https://checkaproduct.se.com/>



General information about Green Premium products

Click the link below to read about Schneider Electric's Green Premium product strategy.

<https://www.schneider-electric.com/en/work/support/green-premium/>



Trademarks

This guide makes reference to system and brand names that are trademarks of their relevant owners.

- Zigbee® is a registered trademark of the Connectivity Standards Alliance.
- Apple® and App Store® are brand names or registered trademarks of Apple Inc.
- Google Play™ Store and Android™ are brand names or registered trademarks of Google Inc.
- Wi-Fi® is a registered trademark of Wi-Fi Alliance®.
- Wiser™ is a trademark and the property of Schneider Electric, its subsidiaries and affiliated companies.

Other brands and registered trademarks are the property of their respective owners.

Schneider Electric (NZ) Ltd
Level 2, Building 6, 64 Highbrook Drive
East Tamaki, Auckland 2013
New Zealand

Customer Care: 0800 741 303

www.pdl.co.nz

As standards, specifications, and design change from time to time,
please ask for confirmation of the information given in this publication.

© 2023 – 2023 Schneider Electric. All rights reserved.

DUG_Wiser Micro Module Blind_PDL-00