

LK FUGA® Wiser Multiwire LED Rotary Dimmer

Device User Guide

Information about features and functionality of the devices.

03/2025

Lauritz Knudsen 



Legal Information

The information provided in this document contains general descriptions, technical characteristics and/or recommendations related to products/solutions.

This document is not intended as a substitute for a detailed study or operational and site-specific development or schematic plan. It is not to be used for determining suitability or reliability of the products/solutions for specific user applications. It is the duty of any such user to perform or have any professional expert of its choice (integrator, specifier or the like) perform the appropriate and comprehensive risk analysis, evaluation and testing of the products/solutions with respect to the relevant specific application or use thereof.

The Schneider Electric brand and any trademarks of Schneider Electric SE and its subsidiaries referred to in this document are the property of Schneider Electric SE or its subsidiaries. All other brands may be trademarks of their respective owner.

This document and its content are protected under applicable copyright laws and provided for informative use only. No part of this document may be reproduced or transmitted in any form or by any means (electronic, mechanical, photocopying, recording, or otherwise), for any purpose, without the prior written permission of Schneider Electric.

Schneider Electric does not grant any right or license for commercial use of the document or its content, except for a non-exclusive and personal license to consult it on an "as is" basis.

Schneider Electric reserves the right to make changes or updates with respect to or in the content of this document or the format thereof, at any time without notice.

To the extent permitted by applicable law, no responsibility or liability is assumed by Schneider Electric and its subsidiaries for any errors or omissions in the informational content of this document, as well as any non-intended use or misuse of the content thereof.

Table of Contents

Safety Information.....	4
LK FUGA® Wiser Multiwire LED Rotary Dimmer	5
For your safety	5
About the device.....	6
Installing the device	6
Quick Home Connect.....	7
Pairing Wiser Wireless Switch with Rotary Dimmer	8
Operating a Dimmer.....	8
Resetting the Device in Quick Home Connect	10
LED Indications in Quick Home Connect.....	10
Troubleshooting in Quick Home Connect	10
Pairing the device with the Wiser Gateway	11
Pairing device manually.....	12
Pairing device with auto scan	14
Checking the type of wiring mode	15
Configuring the device	16
Changing the device icon	16
Renaming the device	17
Changing the device location	17
Managing dimmer settings.....	18
Removing the device	20
Resetting the device	21
Using the device.....	22
Switching/Dimming the device manually	23
Switching/Dimming the device using app	23
Creating a schedule	25
Creating a moment	26
Creating an automation	28
LED Indication.....	34
Troubleshooting	34
Technical Data	35
Compliance.....	36
Product Environmental Data.....	36
EU Declaration of Conformity	37
Trademarks.....	37

Safety Information

Important Information

Read these instructions carefully and look at the equipment to become familiar with the device before trying to install, operate, service, or maintain it. The following special messages may appear throughout this manual or on the equipment to warn of potential hazards or to call attention to information that clarifies or simplifies a procedure.



The addition of either symbol to a “Danger” or “Warning” safety label indicates that an electrical hazard exists which will result in personal injury if the instructions are not followed.



This is the safety alert symbol. It is used to alert you to potential personal injury hazards. Obey all safety messages that accompany this symbol to avoid possible injury or death.

DANGER

DANGER indicates a hazardous situation which, if not avoided, **will result in** death or serious injury.

Failure to follow these instructions will result in death or serious injury.

WARNING

WARNING indicates a hazardous situation which, if not avoided, **could result in** death or serious injury.

CAUTION

CAUTION indicates a hazardous situation which, if not avoided, **could result in** minor or moderate injury.

NOTICE

NOTICE is used to address practices not related to physical injury.

LK FUGA® Wiser Multiwire LED Rotary Dimmer



545D0103



545D6103

For your safety

⚠ DANGER

HAZARD OF ELECTRIC SHOCK, EXPLOSION, OR ARC FLASH

Safe electrical installation must be carried out only by skilled professionals. Skilled professionals must prove profound knowledge in the following areas:

- Connecting to installation networks.
- Connecting several electrical devices.
- Laying electric cables.
- Safety standards, local wiring rules and regulations.

Failure to follow these instructions will result in death or serious injury.

⚠ DANGER

RISK OF FATAL INJURY FROM ELECTRIC SHOCK

The output may carry electric current even when the load is switched Off.

Disconnect the device from the supply by means of the fuse in the incoming circuit before working on the device.

Failure to follow these instructions will result in death or serious injury.

⚠ CAUTION**THE DEVICE MAY BE DAMAGED**

Only connect dimmable load.

Failure to follow these instructions can result in injury or equipment damage.

About the device

LK FUGA® Wiser Multiwire LED Rotary Dimmer (hereinafter referred to as **Rotary Dimmer**), you can switch and dim LED lamps, ohmic, inductive or capacitive loads.

Control options

Home control: To control the dimmer through the Wiser app you will need the Wiser Gateway.

Functions:

- Automatic load detection
- Thermal protection, overload-resistant, short-circuit protection, soft start, soft stop

Installing the device

Refer to the installation instruction supplied with this product.

See LK Fuga®Wiser Multiwire LED Rotary Dimmer.

Quick Home Connect

Quick Home Connect is a wireless connectivity solution for Zigbee devices without the need for a Hub/Gateway or smartphone application. Quick Home Connect is your starting point for wireless home automation. It performs functions like switching, dimming and shutter control using the LK FUGA® Wiser wireless battery 4 button switch (hereinafter referred to as Wiser Wireless switch) via a Zigbee network.

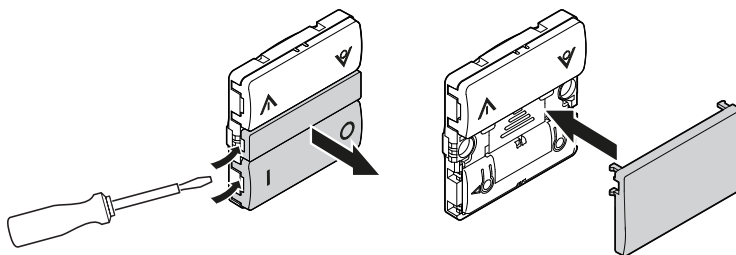
The **Wiser Wireless switch** is a battery-powered wireless push-button switch that is used to control Zigbee devices (such as dimmer, shutter, switch, and socket) within the same Zigbee network.

Limitations

- Quick Home Connect serves only as a room control solution.
- This solution does not support remote control, smartphone app usage, or scheduling features.

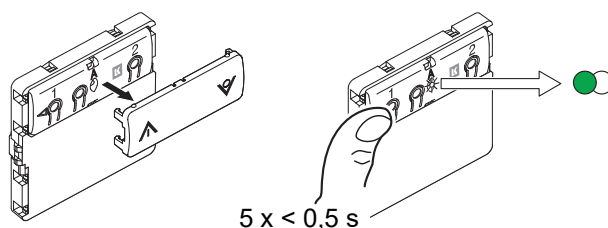
Pairing Wiser Wireless Switch with Rotary Dimmer

1. If you do not need the lower rocker of the Wiser Wireless switch, you can replace it with a blind plate.



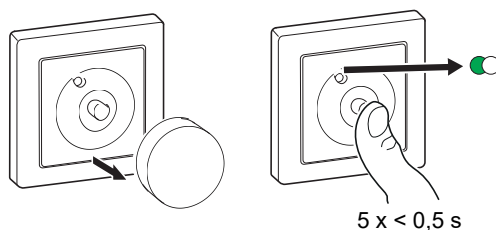
2. Remove the top rocker and short press the left push button 5 times in quick succession on the Wiser Wireless switch.

The status LED blinks green.



3. Remove the knob and short press the push button 5 times in quick succession.





The status LED blinks green.

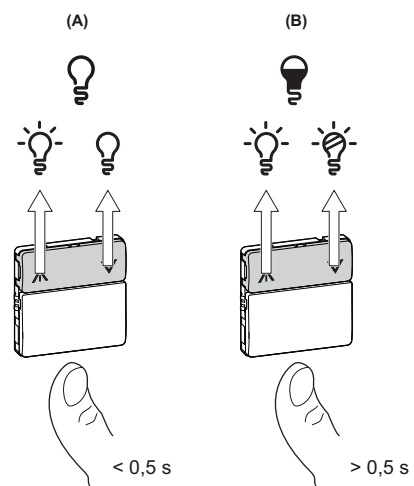


The light connected to the Rotary Dimmer blinks for a few times. The status LED stops blinking green on the Wiser Wireless switch and the Rotary Dimmer. The Rotary Dimmer can now be controlled by the Wiser Wireless switch.

Operating a Dimmer

You can switch the dimmer ON/OFF and adjust its brightness using the paired Wireless switch.

- Short press the left  or right  of the Wireless switch ($< 0,5$ s) to turn ON/OFF the connected load (A).
- Long press the left  or right  of the Wireless switch ($> 0,5$ s) to increase or decrease the brightness of the connected load (B).



Resetting the Device in Quick Home Connect

It is necessary to reset the devices in the following scenarios:



- Unpair the device in Quick Home Connect:
- Refer to
 - Resetting the Wireless switch
 - Resetting the Rotary dimmer

When reset is done successfully. The Wiser Wireless switch and device returns to factory default.

- Integrating into Wiser System
 - If you wish to integrate the devices into Wiser System, reset all the devices in Quick Home Connect and refer to pairing the device with Wiser Hub/ Gateway.

LED Indications in Quick Home Connect

Pairing the device in Quick Home Connect

User Action	LED Indication	Status
Press the push button 5 times in quick succession.	LED blinks green, once per second. 	Pairing mode is active for 60 seconds. When pairing is completed, LED stops blinking. 

Troubleshooting in Quick Home Connect

Symptom	Possible cause	Solution
LED displays amber on the device.	Pairing not completed and returned to factory default.	Pair the Wiser Wireless switch and the device again. Refer to <ul style="list-style-type: none"> • Rotary dimmer, page 8
Wiser Wireless switch not able to control the device reliably.	The Wiser Wireless switch and the device are too far away from each other.	Place the Wiser Wireless switch in a position closer to the device.
	The Wiser Wireless switch lost pairing.	Pair the device again. Refer to <ul style="list-style-type: none"> • Rotary dimmer, page 8
	The Wiser Wireless switch battery is discharged.	Replace the battery of the Wireless switch


Scenario	Procedure
Control multiple devices with one Wiser Wireless switch.	To control multiple devices with a single Wiser Wireless switch, start by pairing it with one device. Then, use the same Wireless switch to pair with additional devices. NOTE: You can pair up to 7 devices to a single Wiser Wireless switch.
2-gang FLS with devices (relay switch, dimmer, shutter control, or socket outlet).	Pair either left or right Wireless switch with any of the devices (relay switch, dimmer, shutter control, or socket outlet). You can also pair another rocker of the Wireless switch with another device.

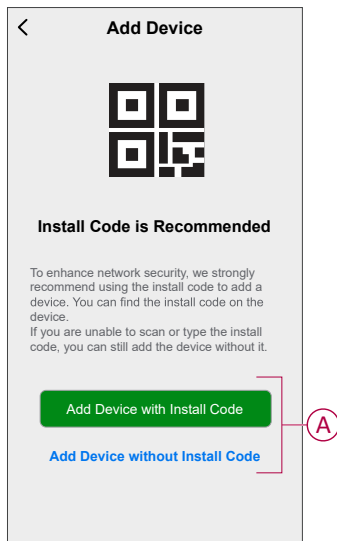
Pairing the device with the Wiser Gateway

Using the Wiser app, pair your device with the **Gateway/Hub** to access and control the device. You can either add the device manually or do an auto-scan to pair it.

Pairing device manually

Follow the steps to pair the device manually:

1. On **Home** page, tap **+**.
2. Tap , select the required **Wiser Hub** on the slide-up menu.
3. Select an option to add the device (A):
 - **Add Device with Install Code**
 - **Add Device without Install Code**

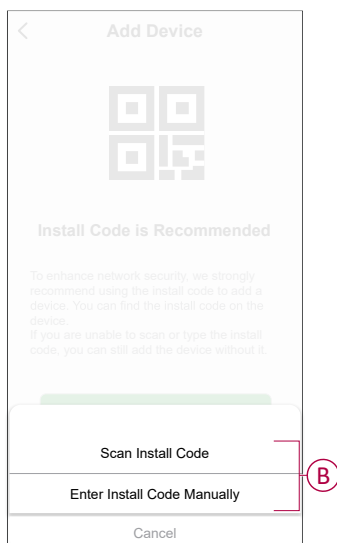


TIP: It is highly recommended to add the device with install code.

4. To pair the device with an install code, tap **Add Device with Install Code** to display the slide-up menu. Select any one of the options (B):
 - **Scan Install Code** - you can scan the device for the install code.
 - **Enter Install Code Manually** - you can manually enter the install code from the device.

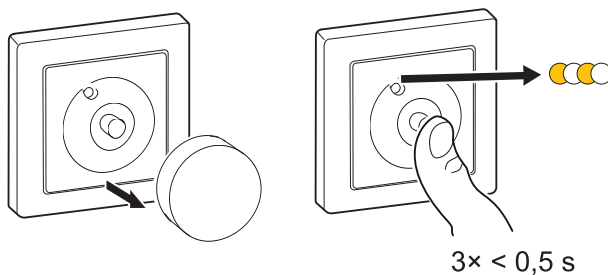
TIP: Install code is located on the rear side of the device.

After scanning or entering the install code, proceed to **Step 6**.



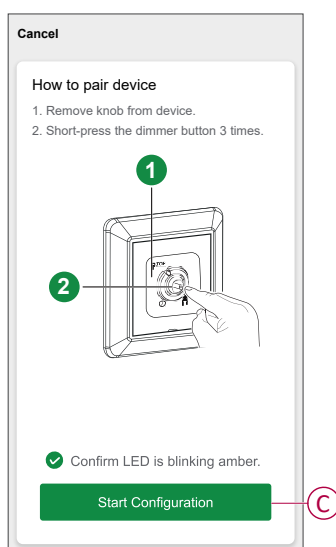
5. To pair the device without install code, tap **Add Device without Install Code**.

6. Remove the knob from the device and short press the dimmer button 3 times ($< 0,5$ s).

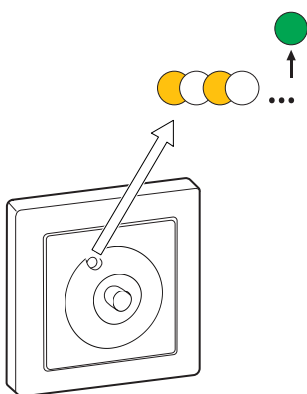


The LED blinks amber.

7. In the app, select **Confirm LED is blinking amber** and tap **Start Configuration (C)**.



After a few seconds, a solid green LED indicates that the device is successfully paired to the **Gateway/Hub**.



8. Once the device is added in the app, tap **Done**.

Pairing device with auto scan

Pairing the device with auto scan automatically discovers the device when the corresponding device is powered on.

1. On the **Home** page, tap **+**.
2. Tap **Auto scan > Confirm**.
3. Enable permissions to **Access location** and **Wi-Fi** for scanning device and tap **Start scanning**.

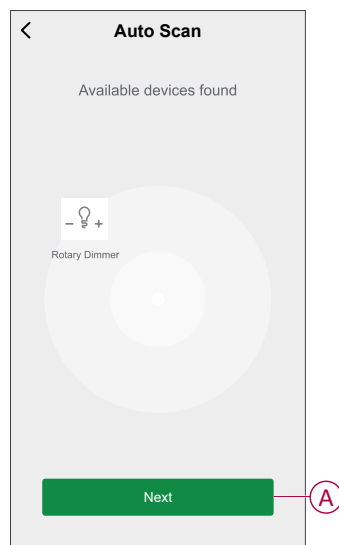
NOTE: If you have multiple hubs, do Step 4 or proceed to Step 5.

4. Tap **Select hub** and select the Wiser hub from the slide-up menu.
5. Remove the knob from the device and short press the push button 3 times (< 0,5 s) and wait for a few seconds until the device search is complete.

The LED blinks amber.

TIP: If you want to pair multiple devices at once, perform step 5 on each device and wait for a few seconds for them to be detected.

6. Tap **Next (A)** and select **Rotary Dimmer**.



7. Once the device is added successfully, tap **Done**.

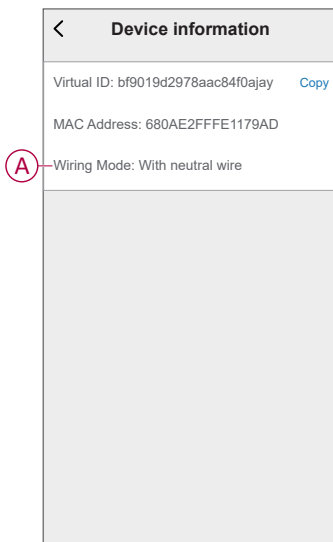
Checking the type of wiring mode

Using the Wiser app, you can check whether the dimmer is connected with or without neutral wire.

1. On the **Home** page, tap **All devices** > **Rotary Dimmer**.

2. Tap  and tap **Device information**.

You see the type of **wiring mode** (A) in the app.





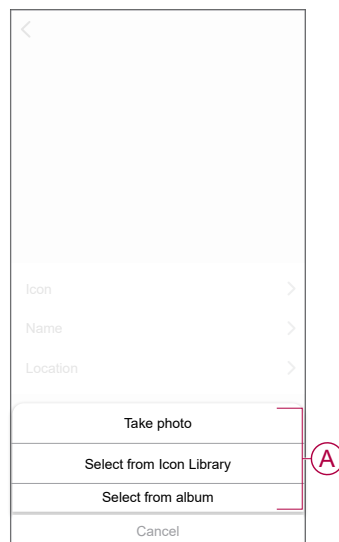
NOTE: Virtual ID and MAC address may vary with the device.

Configuring the device

Changing the device icon



You can change the device icon using the Wiser app.

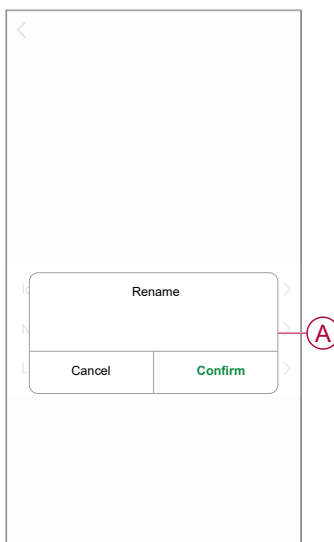
1. On the **Home** page, select the device for which you wish to change the icon.
2. At the top-right corner of the screen, tap .
3. Tap edit  next to the device name.
4. Tap **Icon** to view the menu.
5. In the slide-up menu, select any one of the following (A) to change the device icon:
 - **Take photo**: Allows you to take a photo with your mobile camera.
 - **Select from Icon Library**: Allows you to select an icon from the app library.
 - **Select from album**: Allows you to select a photo from the mobile gallery.



Renaming the device



You can rename the device using the Wiser app.

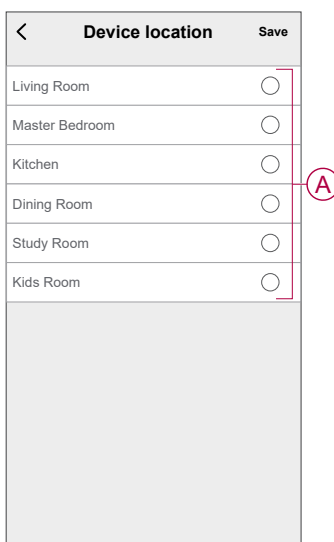
1. On the **Home** page, select the device for which you wish to rename.
2. At the top-right corner of the screen, tap .
3. Tap edit  next to the device name.
4. Tap **Name**, enter the new name (A) and then tap **Confirm**.



Changing the device location

You can change the device location using the Wiser app.

1. On the **Home** page, select the device for which you wish to change the location.
2. At the top-right corner of the screen, tap .
3. Tap edit  next to the device name.
4. Tap **Location**.
5. Select the desired location from the list (A) and then tap **Save**.



Managing dimmer settings

Using the Wiser app, you can manage the Dimmer modes and settings.

To access dimmer settings:

1. On the **Home** page, tap **All devices > Rotary Dimmer**.
2. On the device control panel page, tap **Settings**.

Dimming mode

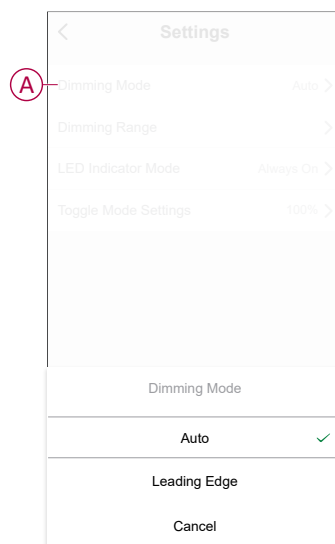
If you have problems with light flickering, then change the dimming mode in the app. This improves the dimming quality in the light.

Tap **Dimming Mode** (A) and select either of the following:

- **Auto** - When any other load is connected to the dimmer (e.g. filament bulb).
- **RL-LED** - Select the mode only when the LED is not working properly in Auto mode.

NOTE:

- Refer to technical data, page 35 for more information.
- Flickering may also occur when rotary dimmer is not connected with a neutral wire.



Dimming range

To avoid flickering and switching off the LED, you can restrict the maximum and minimum brightness of the load connected to the device.

Tap **Dimming Range** (B) and do either or both of the following:

- **Min Brightness** - Drag the slider bar to restrict the minimum brightness.

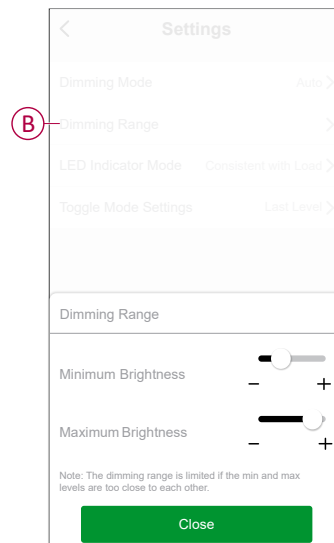
NOTE: The minimum brightness level should be lower than maximum brightness level.

TIP: If you set the minimum brightness to the right most position on this sliding bar, then the load glows at the minimum brightness even if you drag the sliding bar to the lowest value in the control panel, page 22.

- **Max Brightness** - Drag the slider bar to restrict the maximum brightness

NOTE: The maximum brightness level should be greater than minimum brightness level.

TIP: If you set the maximum brightness to the left most position on this sliding bar, then the load glows at the maximum brightness even if you drag the sliding bar to the highest value in the control panel, page 22.

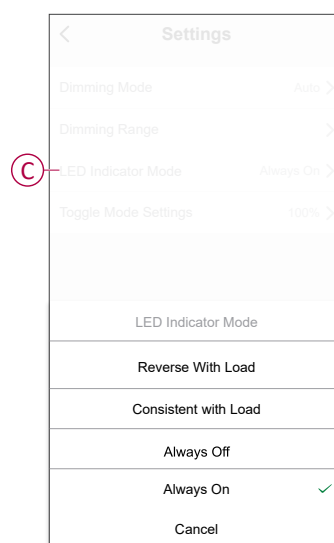


NOTE: The Dimming range is limited if the min. and max. levels are too close to each other.

LED indicator mode

You can choose how the LED indicator on the device should work by tapping the **LED Indicator mode** (C) and select any one of the following:

- **Reverse With Load** - The LED on the Dimmer is On when the device is Off.
- **Consistent With Load** - The LED on the Dimmer is On when the device is On.
- **Always Off** - The LED on the Dimmer is always Off.
- **Always On** - The LED on the Dimmer is always On.



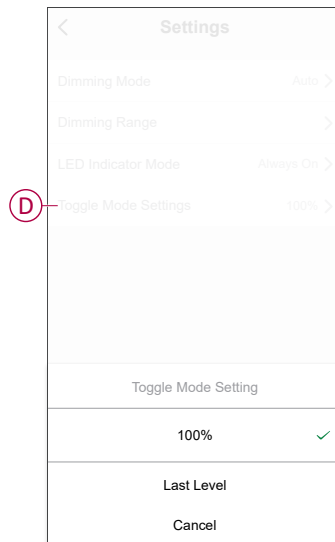
For information on LED color during each modes, refer to LED indication, page 34.

Toggle mode setting

Using this setting, the device will remember the last state of the device.


Tap **Toggle Mode Setting** (D) and select any one of the following:

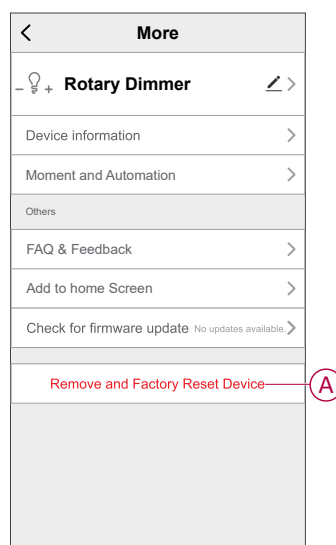
- **100%** - The LED glows at maximum brightness every time it is turned on.
- **Last Level (Memory Function)** - The LED glows at the previously set brightness level every time it is turned on.



Removing the device

Using the Wiser app, you can remove a device from the device list.

1. On the **Home** page, tap **All devices > Rotary Dimmer**.
2. Tap  to display more details.
3. Tap **Remove and Factory Reset Device** (A).



TIP: On the **Home** page, tap and hold the **Rotary Dimmer** to remove the device.

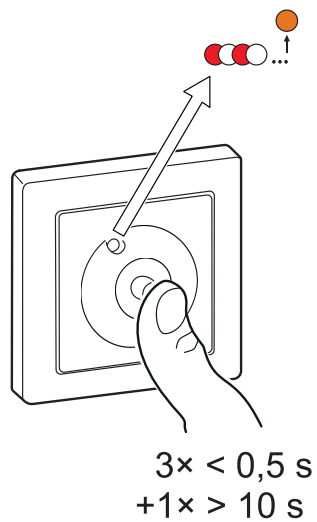
NOTE: By removing the device, you will reset the device. If you still have a problem with the reset, then refer to [resetting the device](#), page 21.

Resetting the device

You can reset the dimmer to factory default manually.

- Remove the knob and short-press the push button 3 times (<0.5 s) and then long-press the push button once (>10 s).
- After 10 s, the LED starts blinking red and then release the push button.
- Upon successful reset, the LED stops blinking.
- The dimmer restarts and blinks green for a few seconds.

NOTE: After reset, the LED turns amber indicating that it is ready for pairing.



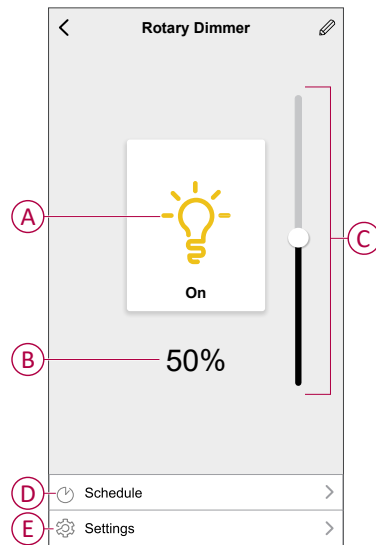
Using the device

The Control Panel allows you to turn on/off, increase/decrease the brightness and control various settings.

On the **Home** page, tap **All devices** > **Rotary Dimmer** to access the control panel.

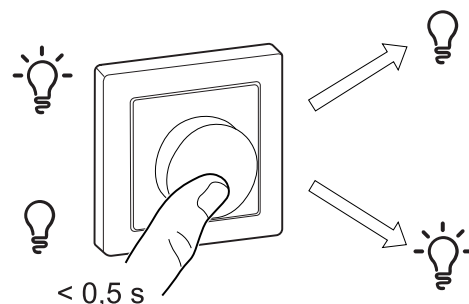
On the control panel page, you can see the following:

- The current state of the device (A)
- The current brightness percentage (B)
- Sliding bar to adjust the brightness (C)
- Schedule, page 25 (D)
- Settings, page 18 (E)

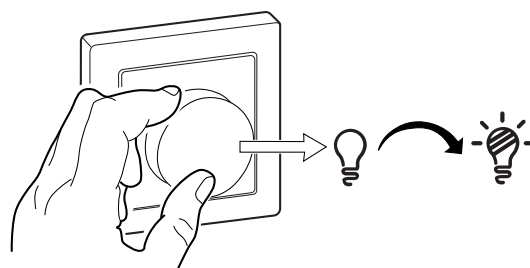


Switching/Dimming the device manually

You can manually turn ON/OFF the dimmer and increase/decrease brightness level. This will provide power to the load connected to it.
Short press the push button (< 0,5 s) once to switch ON/OFF the dimmer.



To increase brightness, turn the dimmer knob clockwise, and to decrease brightness, turn it anti-clockwise.



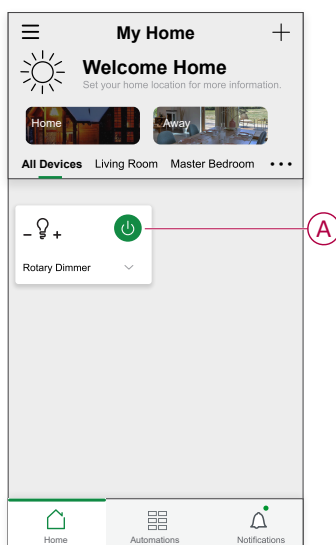
Switching/Dimming the device using app


Using the Wiser app, you can turn on/off and increase/decrease the brightness of the device.

Switch On/Off the device

Follow the steps to turn on/off the device:

1. On the **Home** page, tap the power button (A) to turn on/off the dimmer.



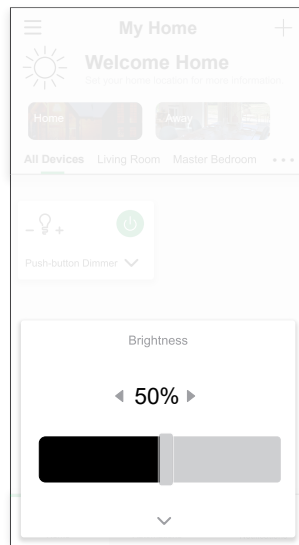
- Alternatively, you can navigate to the control panel, page 22 of the device and tap  to turn on/off the dimmer.

NOTE: The control panel shows the current state of the Dimmer.

Adjusting the brightness of the device

Follow the steps to increase/decrease the brightness of the device:

- On the **Home** page, tap the **v** and drag the slider to adjust the brightness of the Dimmer.



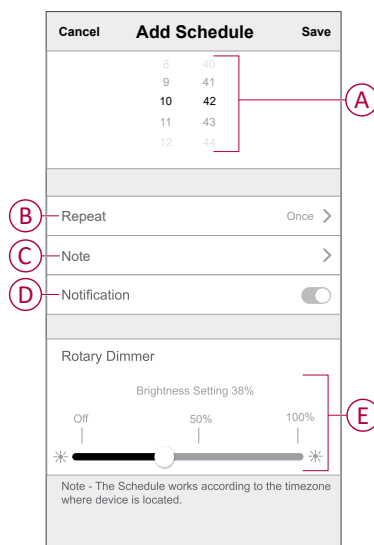
- Alternatively, you can navigate to the control panel, page 22 of the device and drag the sliding bar up/down to increase/decrease the brightness.

NOTE: The control panel shows the current brightness percentage of the Dimmer.

Creating a schedule

The Rotary Dimmer can be controlled and triggered by a schedule. Once the schedule is set, your system will follow the active schedule. You can create or modify the schedules at any time.




1. On the **Home** page, tap **All devices > Rotary Dimmer**.
2. Tap **Schedule > Add schedule** to add a schedule.
3. Set the time (A).
4. Tap **Repeat** (B) to select the days you want to set the schedule.
5. Tap **Note** (C), enter the note and tap **Confirm**.
6. Tap the toggle switch to turn on the **Notification** (D) for the schedule. The app will send a notification that the scheduled task is executed at the time of schedule.
7. Adjust the **Brightness settings** (E) through sliding bar.

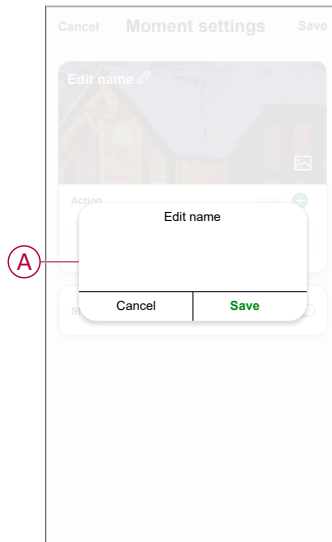


8. Tap **Save**.


Creating a moment

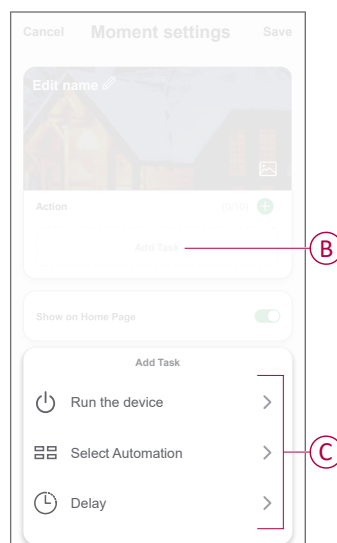
A Moment allows you to group multiple actions that are usually done together. Using the Wiser app, you can create moments based on your needs (such as movie night).

1. On the **Home** page, tap .
2. Go to **Moment** > **+** to create a moment.
3. Tap **Edit name** , enter the name of the moment (A) and tap **Save**.
TIP: You can choose the cover image that represents your moment by tapping .

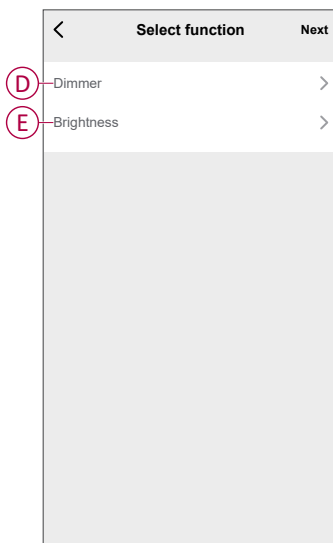


4. In the **Action** section, tap **Add task** (B) to open the slide-up menu.
5. In the **Add task** menu, you can do either or all of the following actions (C):
 - **Run the device** - Select the devices that you want in a moment.
 - **Select Automation** - Select the automation that you want to enable or disable. For more info refer to [Automation](#), page 28.
 - **Delay** - Set the delay time.

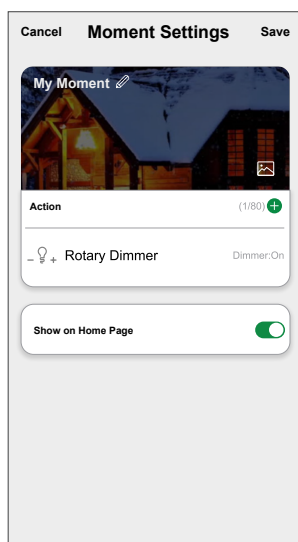
NOTE: You can add one or more actions using .



6. Tap **Run the device > Rotary Dimmer** and select either or both the functions to add in the moment:
- **Dimmer**: turn the Dimmer on/off (D).
 - **Brightness**: adjust the brightness level (E).




7. Once all the actions are set, tap **Save**.



Editing a moment

1. On the **Moment** tab, locate the moment you want to edit and tap ●●●.
2. On the **Edit** page, you can tap each item (such as dimmer, shutter, delay, temperature, etc.) to change the settings.

TIP:

- You can add one or more actions using .
- To delete an existing action, slide each item towards left and tap **Delete**.

Deleting a moment



To delete a moment:


1. On the **Moment** tab, locate the moment that you want to delete and then tap ●●●.
2. Tap **Delete** and then tap **Ok**.

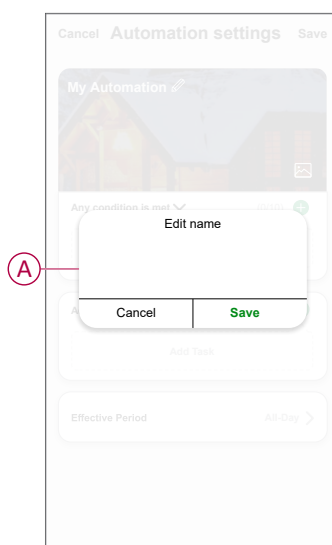
NOTE: After deleting a moment, the device action can no longer be triggered.

Creating an automation

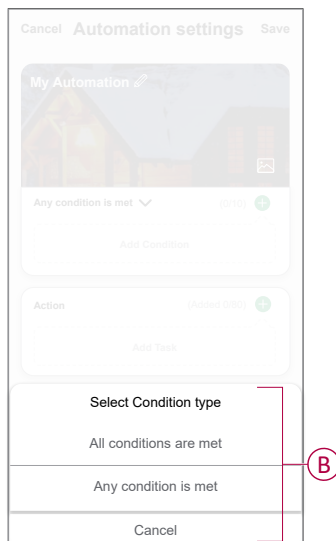
An automation allows you to group multiple actions that are usually done together, triggered automatically or at scheduled times. By using the Wiser app, you can create automations based on your needs.

1. On the **Home** page, tap the .
2. Go to **Automation** > **+** to create an automation.
3. Tap **Edit name** , enter the name of the automation (A) and tap **Save**.


TIP: You can choose the cover image that represents your automation by tapping .

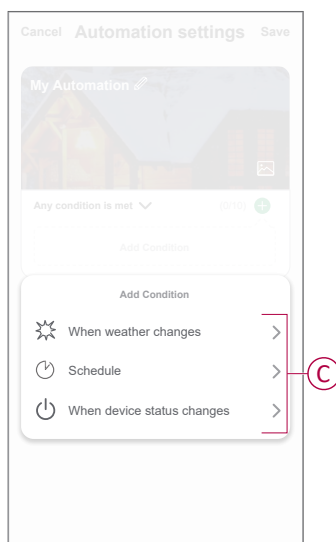


4. Tap **Any condition is met** to select any one of the condition type (B):
 - **All conditions are met** - The automation is triggered when all the conditions are met.
 - **Any condition is met** - The automation is triggered when at least one condition is met.

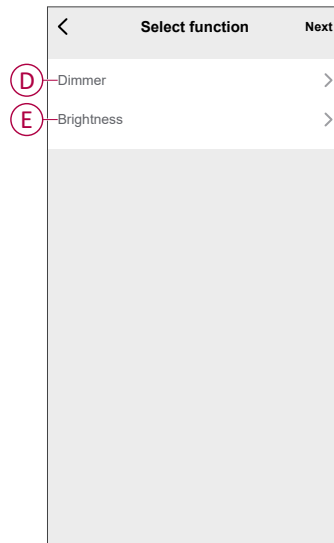


5. Tap **Add Condition** to open the slide-up menu.
6. In the **Add Condition** menu, you can do either or all of the following options (C):
 - **When weather changes** - Select the various weather settings
 - **Schedule** - Set the time and day
 - **When device status changes** - Select the device and it's function


NOTE: You can add one or more conditions using .

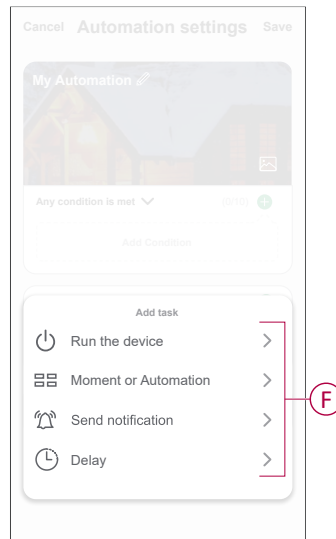


7. Tap **When device status changes > Rotary Dimmer** and select either or both the functions:
 - **Dimmer**: turn the Dimmer on/off (D).
 - **Brightness**: adjust the brightness level (E).

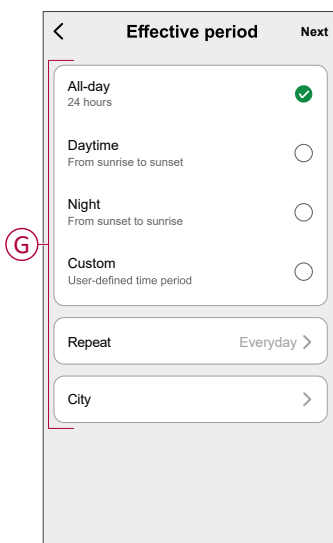


8. Tap **Add task** to open the slide-up menu.
9. In the **Add task** menu, you can do either or all of the following options (F):
 - **Run the device** - Select the devices that you want to trigger
 - **Moment or Automation** - Select the moment which you want to trigger or select the automation that you want to enable or disable
 - **Send notification** - Turn on notification for the automation
 - **Delay** - Set the delay time

NOTE: You can add one or more actions using .



10. Tap on **Effective period** to set the time range for the automation. You can select any one of the following (G):
 - **All-day - 24 hours**
 - **Daytime - From sunrise to sunset**
 - **Night - From sunset to sunrise**
 - **Custom - User defined time period**





11. Set all the actions and conditions and tap **Save**.

Automation is now available under **Automation** tab. Use toggle switch to enable/disable automation.

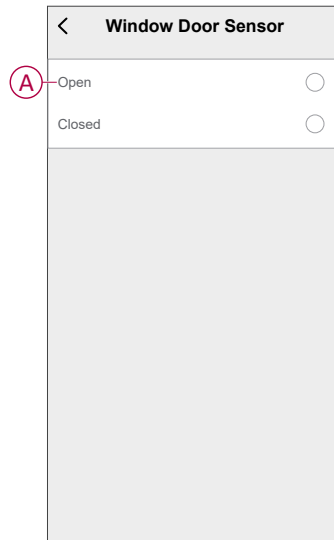
Example of an automation

This demonstration shows you how to create an automation to switch On the light when a window door sensor is activated at night.

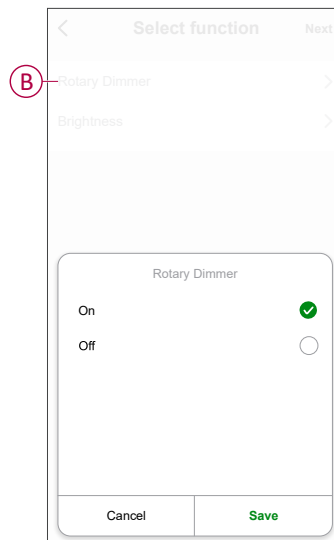
NOTE: The Dimmer will not be switched Off automatically when the sensor sends the "Closed" message. To switch Off the dimmer when the door is closed, you must create a new automation.

1. Go to **Automation** > **+** icon to create an automation.
2. Tap **Edit name** , enter the name of the automation and tap **Save**.
TIP: You can choose the cover image that represents your automation by tapping  icon.
3. Tap **Add Condition** > **When device status changes** > **Window Door Sensor**.

4. Tap **Window Door Sensor** > **Open** (A).

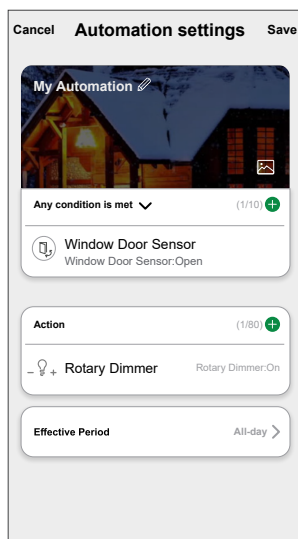


5. Tap **Add task** > **Run the device** > **Rotary Dimmer**.
6. Tap **Rotary Dimmer** (B) and tap **On** in the slide-up menu.



7. Tap **Effective period**, select **Night** and tap **Next**.

8. In the **Automation Settings** page, tap **Save**.




Once the automation is saved, it is visible on the **Automation** tab. You can tap the toggle switch on the automation to enable it.

Editing an automation

1. On the **Automation** tab, locate the automation you want to edit and tap ●●●.
2. On the **Edit** page, you can tap each item (such as dimmer, shutter, delay, temperature, etc.) to change the settings.

TIP:

- You can add one or more condition or actions using .
- To delete an existing condition or action, slide each item towards left and tap **Delete**.



Deleting an automation

1. On the **Automation** tab, locate the automation that you want to delete and then tap ●●●.
2. Tap **Delete** and then tap **Ok**.



NOTE: After deleting an automation, the device action can no longer be triggered.

LED Indication





Pairing

User Action	LED Indication	Status
Press the push-button 3 times	LED blinks amber per second. 	Pairing mode is active for 30 seconds. When pairing is completed, LED glows green for some time before turning off. 

Resetting

User Action	LED Indication	Status
Press the push-button 3 times and hold it down once for > 10 s.	After 10 s, the LED blinks red. 	The device is in reset mode. It is reset to the factory settings after 10 seconds. The device then restarts and the LED blinks green for a few seconds and then stays amber. 

LED Indicator Mode/Backlight Mode















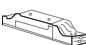


Load Status	ON	OFF
Reverse with load	No LED	
Consistent with load		No LED
Always Off	No LED	No LED
Always On		

Troubleshooting

Symptom	Solution
Dimming up not possible.	<ul style="list-style-type: none"> Reduce/increase load. Allow the Dimmer to cool in case of overheating. Change the load (if the load is incompatible with the Dimmer).
Switching On not possible.	<ul style="list-style-type: none"> Allow the Dimmer to cool in case of overheating. Reduce load. Change load. Check electrical connections.
Flickering at minimum brightness.	<ul style="list-style-type: none"> Increase minimum brightness (if flickering still persists, install a 31LCDA load correction device). Change the load (if the minimum brightness is insufficient). Set to RL LED mode. Connect a neutral wire.
Flickering	<ul style="list-style-type: none"> Change load. Set to RL LED mode.
Only slight dimming capability	<ul style="list-style-type: none"> Change dimming range. Change the load (if the load is incompatible with the Dimmer). Set to RL LED mode.
The device is not ready to pair after the device is removed from the app.	Reset to factory default settings, refer to resetting the device , page 21.

Technical Data

Nominal power

Load type	Load name	Load value	
		2 wire (without neutral)	3 wire (with neutral)
	LED	7–130 W (max. 0,8 A)  RC 7–80 W (max. 0,5 A)  RL	0–130 W (max. 0,8 A)  RC 0–80 W (max. 0,5 A)  RL
	Incandescent lamp	14–200 W  R	0–200 W  R
	Halogen lamp	14–150 W  R	0–150 W  R
	Iron core transformer	14–150 VA  RL	0–150 VA  RL
	Electronic step-down converter	14–150 VA  RC	0–150 VA  RC

Nominal voltage	AC 230 V ~, 50 Hz
Standby	Max 0.4 W
Connecting terminals	Screw terminals for max. 2 x 2.5 mm², 0,5 Nm
Neutral conductor	Recommended
Ambient temperature	5 to 25 °C (temporarily up to 35 °C)
Storage temperature	-25 °C to 70 °C
Transport temperature	-25 °C to 70 °C
Extension unit	Single push-button, unlimited number, max. 50 m
External fuse protection	16 A circuit breaker
Internal device self-protection	Thermal protection Overload-resistant Short-circuit protection
Operating frequency	2405 - 2480 MHz
Max. Radio-frequency power transmitted	< 10 mW
Communication protocol	Zigbee 3.0 certified

Compliance

Product Environmental Data

Find and download comprehensive environmental data about your products, including RoHS compliance and REACH declarations as well as Product Environmental Profile (PEP), End-of-Life instructions (EOL) and much more.

<https://www.se.com/myschneider>



General information about Schneider Environmental Data Program

Click the link below to read about Schneider Electric's Environmental Data Program.

<https://www.se.com/ww/en/about-us/sustainability/environmental-data-program/>



EU Declaration of Conformity

Hereby, Schneider Electric Industries, declares that this product is in compliance with the essential requirements and other relevant provisions of RADIO DIRECTIVE 2014/53/EU. Declaration of conformity can be downloaded on se.com/docs.

Trademarks

This guide makes reference to system and brand names that are trademarks of their relevant owners.

- Zigbee® is a registered trademark of the Connectivity Standards Alliance.
- Apple® and App Store® are brand names or registered trademarks of Apple Inc.
- Google Play™ Store and Android™ are brand names or registered trademarks of Google Inc.
- Wi-Fi® is a registered trademark of Wi-Fi Alliance®.
- Wiser™ is a trademark and the property of Schneider Electric, its subsidiaries and affiliated companies.
- Amazon Alexa™ is a trademark of AMAZON TECHNOLOGIES, INC.
- Google Home™ is a trademark of Google INC.

Other brands and registered trademarks are the property of their respective owners.

Printed in:
Schneider Electric
Lautrupvang 1
2750 Ballerup
Denmark
+45 88 30 20 00

Schneider Electric Danmark A/S
Lautrupvang 1, 2750 Ballerup

Danmark

+45 88 30 20 00

www.lk.dk

As standards, specifications, and design change from time to time, please ask for confirmation of the information given in this publication.

© 2023 – 2025 Schneider Electric. All rights reserved.

DUG_FUGA Rotary Dimmer_LK-01