

Wiser Micro Module Dimmer

Device user guide

Information about features and functionality of the device.

02/2024

IMPORTANT: Select your system to access the right user guide

If you have
Wiser Gateway
(CCT501901) and
Wiser app, continue
reading this
device user guide.

Wiser by SE System


WiFer

Schneider
Electric

Wiser app



CCT501901
Wiser Gateway

If you have
Wiser Hub/HubR
2nd Generation
(CCT501801 or
CCTFR6311G2) and
Wiser Home app, then
click here 

Wiser Home System

WiFer

Schneider
Electric

Wiser Home app



CCT501801
Wiser Hub
2nd Generation



CCTFR6311G2
Wiser HubR
2nd Generation

Legal Information

The information provided in this document contains general descriptions, technical characteristics and/or recommendations related to products/solutions.

This document is not intended as a substitute for a detailed study or operational and site-specific development or schematic plan. It is not to be used for determining suitability or reliability of the products/solutions for specific user applications. It is the duty of any such user to perform or have any professional expert of its choice (integrator, specifier or the like) perform the appropriate and comprehensive risk analysis, evaluation and testing of the products/solutions with respect to the relevant specific application or use thereof.

The Schneider Electric brand and any trademarks of Schneider Electric SE and its subsidiaries referred to in this document are the property of Schneider Electric SE or its subsidiaries. All other brands may be trademarks of their respective owner.

This document and its content are protected under applicable copyright laws and provided for informative use only. No part of this document may be reproduced or transmitted in any form or by any means (electronic, mechanical, photocopying, recording, or otherwise), for any purpose, without the prior written permission of Schneider Electric.

Schneider Electric does not grant any right or license for commercial use of the document or its content, except for a non-exclusive and personal license to consult it on an "as is" basis.

Schneider Electric reserves the right to make changes or updates with respect to or in the content of this document or the format thereof, at any time without notice.

To the extent permitted by applicable law, no responsibility or liability is assumed by Schneider Electric and its subsidiaries for any errors or omissions in the informational content of this document, as well as any non-intended use or misuse of the content thereof.

Table of Contents

Safety information	4
Wiser Micro Module Dimmer	5
For your safety	5
About the device	5
Installing the device	6
Testing the device	6
Pairing the device	6
Pairing device manually	7
Pairing device with auto scan	8
Configuring the device	9
Changing the device icon	9
Renaming the device	10
Changing the device location	10
Setting RL-LED mode	11
Setting the minimum and maximum brightness level	11
Toggle mode setting	12
Removing the device	12
Resetting the device	13
Using the device	14
Manual operation	14
Adjusting the brightness level using app	14
Setting up a schedule	15
Creating a moment	16
Creating an automation	18
LED indication	22
Troubleshooting	22
Technical data	23
Compliance	24
Compliance information for Green Premium products	24
Trademarks	24

Safety information

Important information

Read these instructions carefully and look at the equipment to become familiar with the device before trying to install, operate, service, or maintain it. The following special messages may appear throughout this manual or on the equipment to warn of potential hazards or to call attention to information that clarifies or simplifies a procedure.



The addition of either symbol to a “Danger” or “Warning” safety label indicates that an electrical hazard exists which will result in personal injury if the instructions are not followed.



This is the safety alert symbol. It is used to alert you to potential personal injury hazards. Obey all safety messages that accompany this symbol to avoid possible injury or death.

DANGER

DANGER indicates a hazardous situation which, if not avoided, **will result in** death or serious injury.

Failure to follow these instructions will result in death or serious injury.

WARNING

WARNING indicates a hazardous situation which, if not avoided, **could result in** death or serious injury.

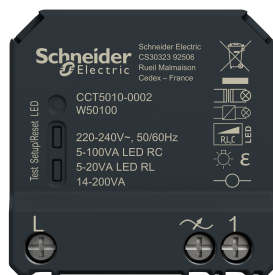
CAUTION

CAUTION indicates a hazardous situation which, if not avoided, **could result in** minor or moderate injury.

NOTICE

NOTICE is used to address practices not related to physical injury.

Wiser Micro Module Dimmer



CCT5010-0002

For your safety

⚡ ⚠ DANGER

HAZARD OF ELECTRIC SHOCK, EXPLOSION, OR ARC FLASH

Safe electrical installation must be carried out only by skilled professionals. Skilled professionals must prove profound knowledge in the following areas:

- Connecting to installation networks.
- Connecting several electrical devices.
- Laying electric cables.
- Safety standards, local wiring rules and regulations.

Failure to follow these instructions will result in death or serious injury.

⚠ DANGER

HAZARD OF ELECTRIC SHOCK

- Make sure that the terminal connection area does not come in contact with the metallic parts of any device installed in the same location.
- Do not short the outputs to neutral.

Failure to follow these instructions will result in death or serious injury.

⚠ CAUTION

EQUIPMENT DAMAGE

- Always operate the product in compliance with the specified technical data.
- Never connect any mixed inductive/capacitive loads.
- Connect only dimmable loads.
- Do not connect the dimmer output to the socket outlet.

Failure to follow these instructions can result in injury or equipment damage.

About the device

The Wiser Micro Module Dimmer (hereinafter referred to as **Puck**) combines the advantages of smart dimmer functionality with ordinary mechanical push-button switches. It transforms a conventional switch into a connected device which can be controlled from the switch or through the Wiser app. It can switch and dim the

ohmic, inductive, or capacitive loads and it is also compatible with dimmable LEDs.

NOTE: Do not control any devices that depend on a permanent power supply.

Additional features:

- Remote control with maximum of 10 single mechanical push-buttons.
- Setting the LED operating mode manually (RL LED mode).
- Electronic overload protection, overheating protection, and short-circuit protection.
- Setting the dimming range: minimum and maximum brightness.
- Setting a time schedule.

Installing the device

Refer to the installation instruction supplied with this product.

See [Wiser Micro Module Dimmer](#).

Testing the device

Before using the Puck, manually test the Puck and make sure that it works when connected to the lighting devices.

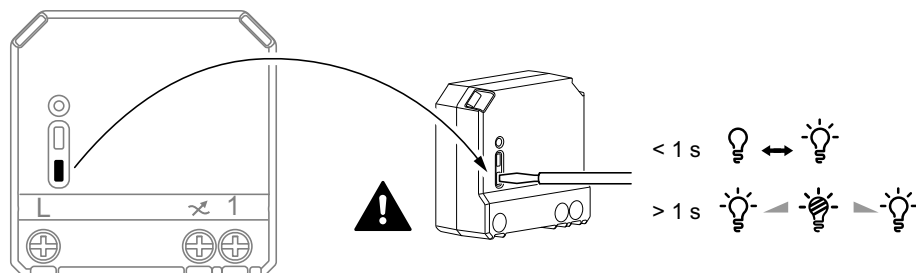
⚠ WARNING

HAZARD OF ELECTRIC SHOCK

- Observe the regulations for working on live parts.
- Only actuate the device buttons using insulated auxiliary equipment that meets the requirements of EN 60900.

Failure to follow these instructions can result in death, serious injury, or equipment damage.

- Short press the test button once, the connected lighting device turns On/Off.
- Press and hold the test button to adjust the dimming level of the connected lighting device.

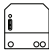


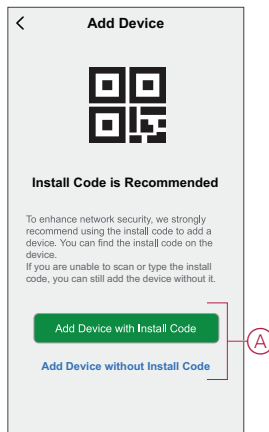
Pairing the device

Using the Wiser app, first pair your device with the **Gateway/Hub** to access and control the device. You can either add the device manually or do an auto-scan to pair it.

Pairing device manually

To pair the device manually:

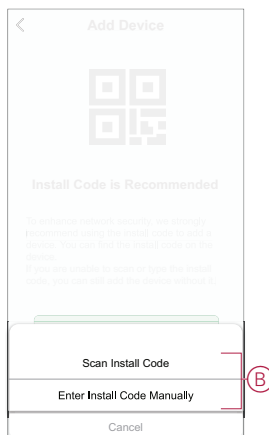
1. On **Home** page, tap **+**.
2. Tap  and select the **Wiser Hub** on the slide-up menu.
3. Select an option to add the device (A):
 - **Add Device with Install Code**
 - **Add Device without Install Code**



TIP: It is highly recommended to add the device with install code.

4. To pair the device with install code, tap **Add Device with Install Code** to open the slide-up menu. Select any one of the options (B):
 - **Scan Install Code** - you can scan the device for the Install Code
 - **Enter Install Code Manually** - you can manually enter the install code from the device

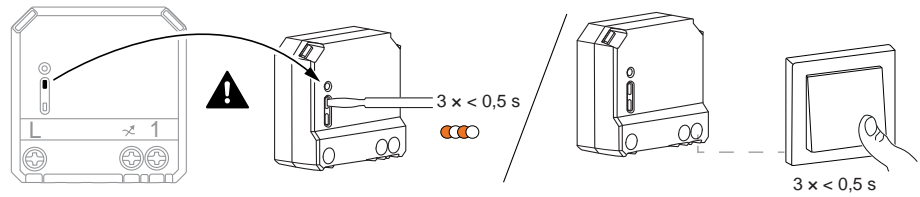
After pairing the device with Install Code, proceed to **Step 6**.



5. To pair the device without install code, tap **Add Device without Install Code**.

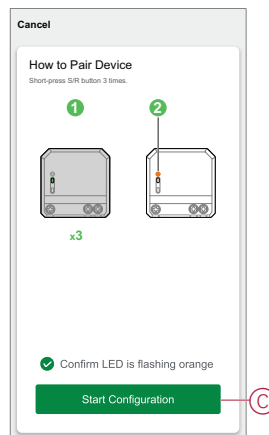
6. Select any of the following:

- Short press the S/R (setup/reset) button 3 (<0,5 s) times on the Puck with a screwdriver.
- Short press the push button 3 times.

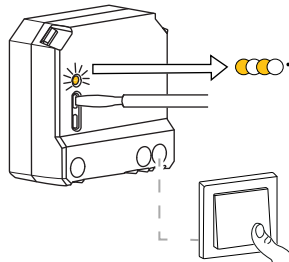


The LED blinks orange.

NOTE: If the puck is located behind the push button, the status LED is not visible.

7. In the app, select **Confirm LED is flashing orange** and tap **Start configuration (C)**.

8. After a few seconds, a solid green LED indicates that the device is successfully paired to the Gateway/Hub.

9. Once the device is added in the app, tap **Done**.

Pairing device with auto scan

Pairing the device with auto scan automatically discovers the device when the corresponding device is powered on.

To pair the device:

1. On the **Home** page, tap **+**.
2. Tap **Auto scan** and tap **Confirm**.
3. Enable permissions to **Access location** and **Wi-Fi** for scanning device and tap **Start scanning**.
4. If you have multiple hubs, do Step 4 or proceed to Step 5.
5. Tap **Select hub** and select the Wiser hub from the slide-up menu.

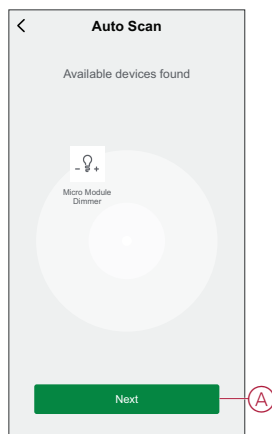
6. Short press the setup/reset button 3 times (< 0,5 s).

NOTE:

- The LED blinks orange.
- Wait for a few seconds until the device search is complete.

TIP: If you want to pair multiple devices at once, perform step 5 on each device and wait for a few seconds for them to be detected.

7. Tap **Next** (A) and select **Micromodule Dimmer**.





8. Once the device is added successfully, tap **Done**.

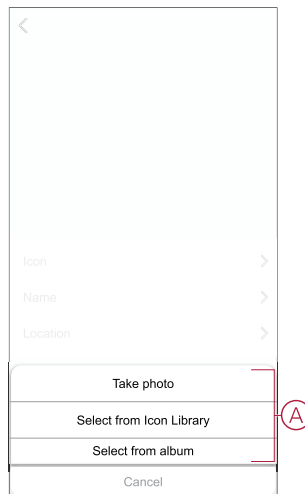
Configuring the device

Changing the device icon

You can change the device icon using the Wiser app.



1. On the **Home** page, select the device for which you wish to change the icon.
2. At the top-right corner of the screen, tap .
3. Tap edit  next to the device name.
4. Tap **Icon** to view the menu.

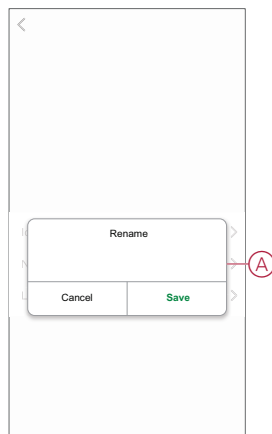
5. In the slide-up menu, select any one of the following (A) to change the device icon:
 - **Take photo** - allows you to click a photo from the mobile camera.
 - **Select from Icon Library** - allows you to select an icon from the app library.
 - **Select from Album** - allows you to select a photo from the mobile gallery.



Renaming the device


You can rename the device using the Wiser app.


1. On the **Home** page, select the device for which you wish to rename.
2. At the top-right corner of the screen, tap .
3. Tap edit  next to the device name.
4. Tap **Name**, enter the new name (A) and then tap **Save**.

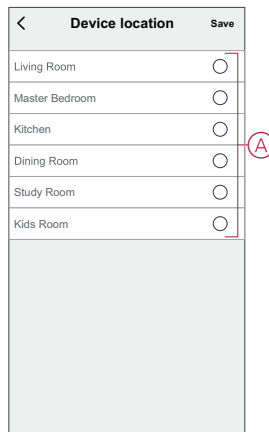


Changing the device location

You can change the device location using the Wiser app.


1. On the **Home** page, select the device for which you wish to change the location.
2. At the top-right corner of the screen, tap .

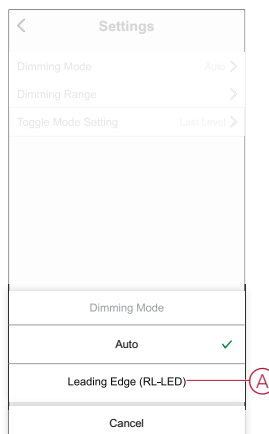
3. Tap edit  next to the device name.
4. Tap **Location**.
5. Select the desired location from the list (A) and then tap **Save**.



Setting RL-LED mode


You can change the dimming mode in the app if you have problems with light flickering. By changing the dimming mode, the dimming quality is also improved. To set the RL-LED mode:

1. On the **Home** page, Tap **All devices** > **Micromodule Dimmer**
2. Tap .
3. Tap **Dimming Mode** for slide-up menu.
4. Select **Leading Edge (RL-LED)** (A) mode.

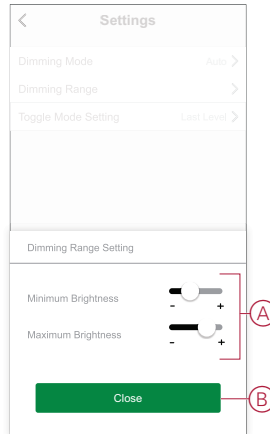


Setting the minimum and maximum brightness level

If the dimmer is connected to an LED, the minimum and maximum brightness should be set to avoid flickering and switching off the LED. To set the minimum and maximum brightness level:

1. On the **Home** page, Tap **All devices** > **Micromodule Dimmer**.
2. Tap .
3. Tap **Dimming Range** for slide-up menu.

4. Drag the sliding bar to increase or decrease the **Minimum Brightness** and **Maximum Brightness (A)**.




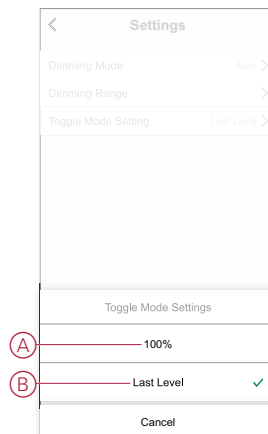
5. Tap **Close(B)**.

Toggle mode setting

You can toggle between the last used brightness level or with 100% brightness level when the dimmer is turned on.


To toggle between the brightness level:

1. On the **Home** page, tap **All devices > Micromodule Dimmer**.
2. Tap .
3. Tap **Toggle Mode Setting** for slide-up menu and select either one of the function for default action.
 - **100% (A)** : to set the brightness level to 100% by default when ever the device is turned on.
 - **Last Level (B)** : to set the previously used brightness level by default when ever the device is turned on.

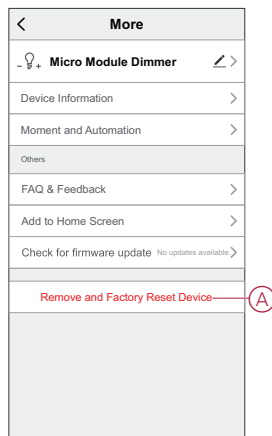


Removing the device

Using the Wiser app, you can remove a device from the device list.
To remove the device:

1. On the **Home** page, tap **All devices > Micromodule Dimmer**.
2. Tap  to display more details.

3. Tap **Remove and Factory Reset Device** (A).



TIP: Alternatively, you can long tap on the **Micromodule Dimmer** on the **Home** page to remove the device.

NOTE:

- Removing the device will reset the Puck. After reset the LED turns orange indicating that the Puck is ready to pair with another network.
- If there is a problem while pairing or resetting the Puck, refer to [Resetting the device manually](#), page 13.

Resetting the device

You can reset the device to factory default manually.
To reset the device:

1. Short press the Setup/Reset button three times ($< 0.5\text{ s}$) and then long press the Setup/Reset button once ($> 10\text{ s}$).
or
Short press the push button 3 times and then long press the push button once for 10 s.

2. After 10 s, LED starts blinking red then release the operation button.

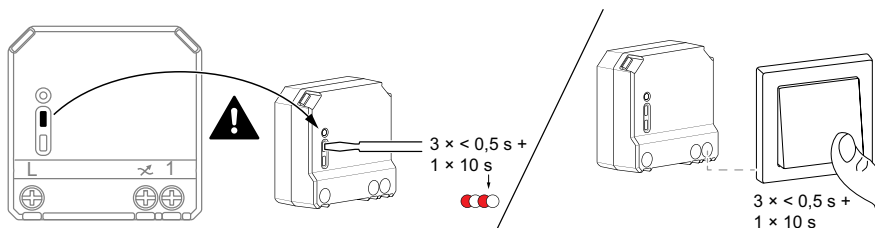
NOTE: All configuration data, user data, and network data are deleted.
After which

- No connectivity to other devices or rooms.
- No timer settings.
- Memory function is active.
- Automatic load detection is active, RC mode is set.
- No limitation to dimming range.

The LED stops blinking upon successful reset of the device.

3. The Puck restarts and blinks green for a few seconds.

NOTE: After reset, the LED turns orange indicating that the device is ready for pairing.

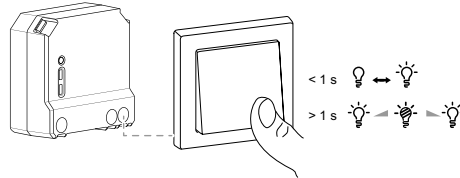


Using the device

Manual operation

When the puck is connected to a mechanical push button, the connected lighting devices can be controlled manually.

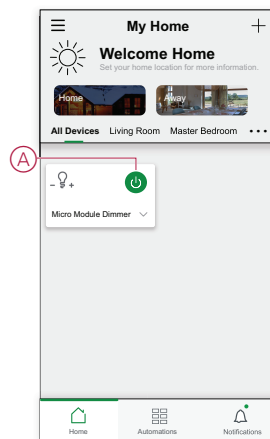
- Short press the push-button rocker to turn on/off the light.
- Press and hold the push-button rocker to adjust the dimming level of the light.




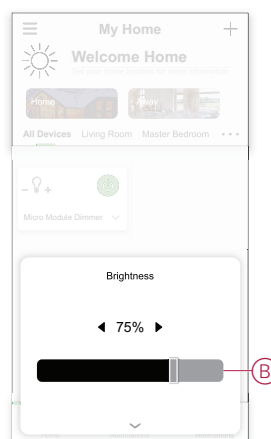
Adjusting the brightness level using app

Using the Wiser app, you can increase/decrease the brightness level remotely. To increase/decrease the brightness level:

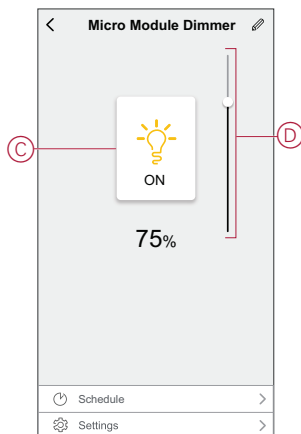
1. On the **Home** page, tap **All devices**.
2. In **Micromodule Dimmer** tap the power button (A) to turn on/off the device.



3. Tap  for slide-up menu.
4. In the slide-up menu, drag the sliding bar (B) to increase/decrease the brightness.



- Alternatively, you can navigate to device menu and tap on (C) to turn on/off the device and when the device is on drag the sliding bar (D) up/down to increase/decrease the brightness.

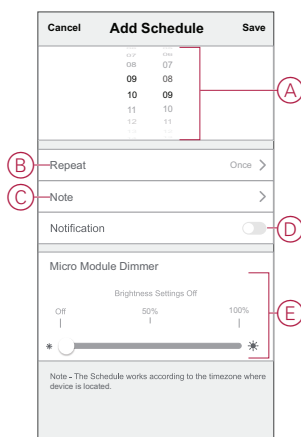


Setting up a schedule

The devices can be fully controlled by schedule. Once the schedule is set, the devices operate at a given time.

To create a schedule:


- On the **Home** page, Tap **All devices** > **Micromodule Dimmer**.
- Tap **Schedule** > **Add Schedule** to add a schedule.
- In **Add Schedule** menu, set the time (A).
NOTE: The Schedule works according to the time zone where the device is located.
- Tap **Repeat** (B) to select the days you want to set the schedule.
- Tap **Note** (C), enter the note and tap **Confirm**.
- Tap the toggle switch (D) to turn on the **Notification** for the schedule. The app will send a notification that the scheduled task is executed at the time of schedule.
- Adjust the **Brightness settings** (E) through sliding bar.




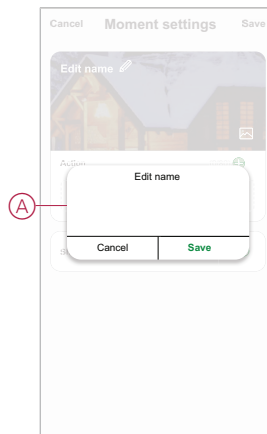
- Tap **Save**

Creating a moment


A Moment allows you to group multiple actions that are usually done together. Using the Wiser app, you can create moments based on your needs. To create a moment:

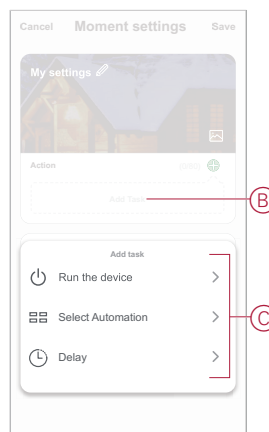
1. On the **Home** page, tap .
2. Go to **Moment** > **+** to create a moment.
3. Tap **Edit name** (A), enter the name of the moment and tap **Save**.

TIP: You can choose the cover image that represents your moment by tapping .

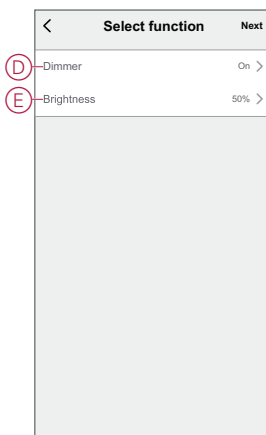


4. In the **Action** section, tap **Add task** (B) to open the slide-up menu.
5. In the **Add task** menu, you can do either or all of the following actions (C):
 - **Run the device** - Select the devices that you want in a moment.
 - **Select Automation** - Select the automation that you want to enable or disable.
 - **Delay** - Set the delay time.

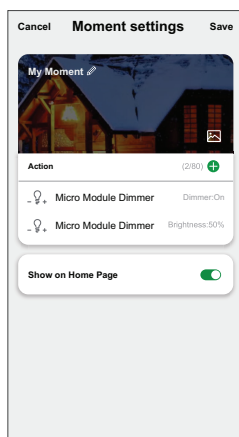
NOTE: You can add one or more actions using .



6. Tap **Run the device > Micromodule Dimmer** to select either or all the functions to add in the moment:
 - **Dimmer (D)** : To set the device **On/Off**.
 - **Brightness (E)** :To set the **percentage** of brightness required.



7. Tap **Next** and once the actions is set, tap **Save**.




Editing a moment

To edit a moment:

1. On the **Moment** tab, locate the moment you want to edit and tap **⋮**.
2. On the **Edit** page, you can tap each item (such as dimmer, shutter, delay, temperature, etc.) to change the settings.

TIP:

- You can add one or more actions using .
- To delete an existing action, slide the each item towards left and tap **Delete**.

Deleting a moment

To delete a moment:


1. On the **Moment** tab, locate the moment that you want to delete and then tap **⋮**.
2. Tap **Delete** and tap **Ok**.


NOTE: After deleting a moment, the device action can no longer be triggered.

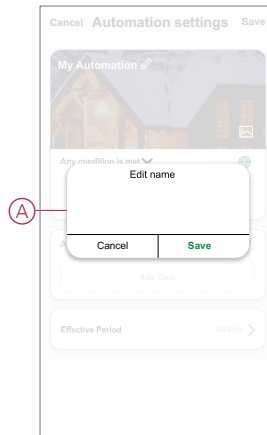
Creating an automation

An automation allows you to group multiple actions that are usually done together, triggered automatically or at scheduled times. By using the Wiser app, you can create automations based on your needs.

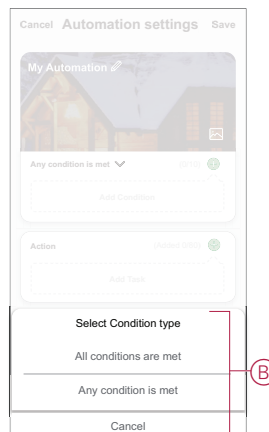
To create an automation:

1. On the **Home** page, tap the .
2. Go to **Automation** > **+** to create an automation.
3. Tap **Edit name (A)**, enter the name of the automation and tap **Save**.

TIP: You can choose the cover image that represents your automation by tapping .




4. Tap **Any condition is met** to select any one of the condition type (B):
 - **All conditions are met** - The automation is triggered when all the conditions are met.
 - **Any condition is met** - The automation is triggered when at least one condition is met.

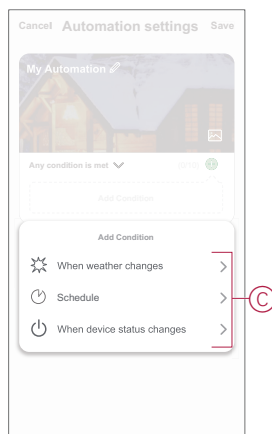


5. Tap **Add Condition** to open the slide-up menu.

6. In the **Add Condition** menu, you can do either or all of the following options (C):

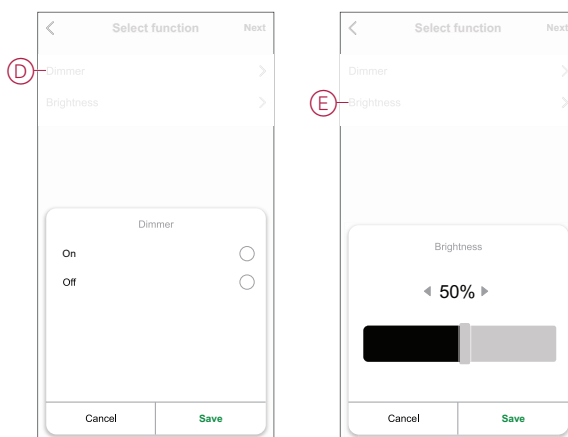
- **When weather changes** - Select the various weather settings.
- **Schedule** - Set the time and day.
- **When device status changes** - Select the device and it's function.

NOTE: You can add one or more conditions using .




7. Tap **When device status changes > Micro Module Dimmer** and select either or both the functions:

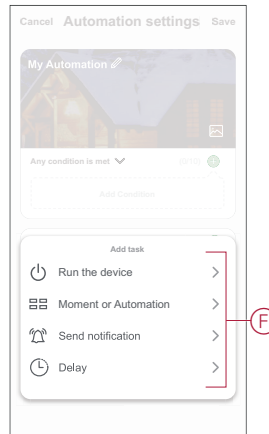
- **Dimmer** - Turn the Dimmer on/off (D).
- **Brightness** - Adjust the brightness level (E).



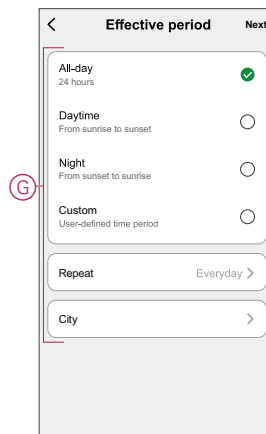
8. Tap **Add task** to open the slide-up menu.

9. In the **Add task** menu, you can do either or all of the following options (F):
- **Run the device** - Select the devices that you want to trigger.
 - **Moment or Automation** - Select the moment which you want to trigger or select the automation that you want to enable or disable.
 - **Send notification** - Turn on notification for the automation.
 - **Delay** - Set the delay time.

NOTE: You can add one or more actions using .



10. Tap on Effective period to set the time range for the automation. You can select any one of the following (G):
- **All-day** - 24 hours
 - **Daytime** - From sunrise to sunset
 - **Night** - From sunset to sunrise
 - **Custom** - User defined time period




11. Once all the actions and conditions are set, tap **Save**.

Once the automation is saved, it is visible on the **Automation** tab. You can tap the toggle switch on the automation to enable it.

Example of an automation

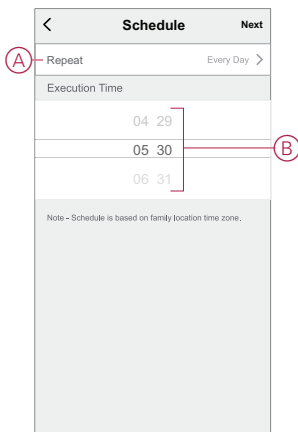
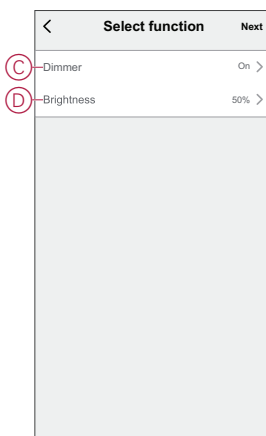
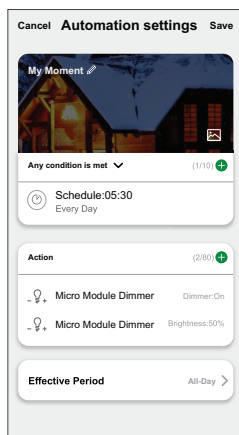
This demonstration shows you how to create an automation to turn on the dimmer at the scheduled time.

1. Go to **Automation** > **+** to create an automation.
2. Tap **Edit name**, enter the name of the automation and tap **Save**.

TIP: You can choose the cover image that best represents your automation by tapping .

3. Tap **Add Condition > Schedule**.

- Tap **Repeat** (A), select the days you want to set the schedule and tap **Save**.
- Set the time (B) at which the automation must start and tap **Next**.

4. Tap **Add task > Run the device > Micromodule Dimmer**.5. Tap **Dimmer** (C) and in the slide-up menu, select **On** and tap **Save**.6. Tap **Brightness** (D) and update the required brightness level and tap **Save**.7. Tap **Next**.8. In the **Automation Settings** page, tap **Save**.


Once the automation is saved, it is visible on the **Automation** tab. You can tap the toggle switch on the automation to enable it.

Editing an automation

To edit an automation:

1. On the **Automation** tab, locate the automation you want to edit and tap **...**.
2. On the **Edit** page, you can tap each item (such as dimmer, shutter, delay, temperature, etc.) to change the settings.

TIP:

- You can add one or more actions using .
- To delete an existing condition or action, slide each item towards left and tap **Delete**.

Deleting an automation



To delete an automation:

1. On the **Automation** tab, locate the automation that you want to delete and then tap **...**.
2. Tap **Delete** and tap **Ok**.



NOTE: After deleting an automation, the device action can no longer be triggered.

LED indication

Pairing the device

User Action	LED Indication	Status
Short press the setup/reset button or push button 3 times.	LED blinks orange once per second. 	Pairing mode is active for 30 seconds. When pairing is completed, LED glows green for a few seconds before turning Off. 

Resetting the device












User Action	LED Indication	Status
Short press the setup/reset button or push button 3 times and hold it down once for > 10 s.	LED blinks red once per second. 	The device is in reset mode. The device then restarts and LED turns orange indicating that the device is ready for pairing. 

Troubleshooting

Symptom	Solution
Dimming up not possible.	<ul style="list-style-type: none"> • Reduce/increase load. • Allow the Puck to cool in case of overheating. • Change the load (if the load is incompatible with the Puck).
Switching on not possible.	<ul style="list-style-type: none"> • Allow the Puck to cool in case of overheating. • Reduce load. • Change load. • Check wiring between the push button and the Puck.
Flickering at minimum brightness.	<ul style="list-style-type: none"> • Increase minimum brightness (if flickering still persists, install a 31LCDA load correction device).

Symptom	Solution
	<ul style="list-style-type: none"> Change the load (if the minimum brightness is insufficient). Set RL LED mode (it is advised to use 10 % of nominal load to avoid overheating of the puck).
Flickering	<ul style="list-style-type: none"> Change load. Set RL LED mode (it is advised to use 10 % of nominal load to avoid overheating of the puck).
Only slight dimming capability	<ul style="list-style-type: none"> Change dimming range. Set RL LED mode (it is advised to use 10 % of nominal load to avoid overheating of the puck). Change the load (if the load is incompatible with the Puck).
The device is not ready to pair after the device is removed from the app.	Reset to factory default settings, refer to Resetting the device manually , page .

Technical data

Nominal power rating for load type		
 LED	LED	5 – 100 VA  5 – 20 VA 
	Incandescent lamp	14 – 200 W 
	Iron core transformer	14 – 150 VA 
	Halogen lamp	14 – 150 W 
 C	Electronic step-down converter	14 – 200 VA 

Nominal voltage	AC 220-240 V, 50/60 Hz
Dimming channel	1
Standby	Max. 0.4 W
Operating Temperature	0 °C to 35 °C
Neutral conductor	Not required
Connecting terminals	Max. 2 x 2.5 mm ² , solid or stranded types
Extension connection	Max. 10 mechanical push buttons
Length of all cable sections	Max. 50 m for 3-wire NYM cable
Fuse protection	16 A circuit breaker
Operating frequency	2405 - 2480 MHz
Max. radio-frequency power transmitted	<10 mW
IP rating	IP20
Product dimensions (H x W x D)	43 x 43 x 22 mm
Communication protocol	Zigbee 3.0 certified

Compliance

Compliance information for Green Premium products

Find and download comprehensive information about Green Premium products, including RoHS compliance and REACH declarations as well as Product Environmental Profile (PEP) and End-of-Life instructions (EOLI).

General information about Green Premium products

Click the link below to read about Schneider Electric's Green Premium product strategy.

<https://www.schneider-electric.com/en/work/support/green-premium/>

Find compliance information for a Green Premium product

Click the link below to search for a product's compliance information (RoHS, REACH, PEP and EOLI).

NOTE: You will need the product reference number or product range to perform the search.

<https://www.reach.schneider-electric.com/CheckProduct.aspx?cskey=ot7n66yt63o1xbflyfj>

Trademarks

This guide makes reference to system and brand names that are trademarks of their relevant owners.

- Zigbee® is a registered trademark of the Connectivity Standards Alliance.
- Apple® and App Store® are brand names or registered trademarks of Apple Inc.
- Google Play™ Store and Android™ are brand names or registered trademarks of Google Inc.
- Wi-Fi® is a registered trademark of Wi-Fi Alliance®.
- Wiser™ is a trademark and the property of Schneider Electric, its subsidiaries and affiliated companies.

Other brands and registered trademarks are the property of their respective owners.

Schneider Electric
35 rue Joseph Monier
92500 Rueil Malmaison
France

+ 33 (0) 1 41 29 70 00

www.se.com

As standards, specifications, and design change from time to time,
please ask for confirmation of the information given in this publication.

© 2021 – 2024 Schneider Electric. All rights reserved.

DUG_Micro Module Dimmer_WSE-02