

LK FUGA® Wiser Multiwire LED Rotary Dimmer

Wiser Home Device User Guide

Information about features and functionality of the devices.

05/2025

Lauritz Knudsen 



Legal Information

The information provided in this document contains general descriptions, technical characteristics and/or recommendations related to products/solutions.

This document is not intended as a substitute for a detailed study or operational and site-specific development or schematic plan. It is not to be used for determining suitability or reliability of the products/solutions for specific user applications. It is the duty of any such user to perform or have any professional expert of its choice (integrator, specifier or the like) perform the appropriate and comprehensive risk analysis, evaluation and testing of the products/solutions with respect to the relevant specific application or use thereof.

The Schneider Electric brand and any trademarks of Schneider Electric SE and its subsidiaries referred to in this document are the property of Schneider Electric SE or its subsidiaries. All other brands may be trademarks of their respective owner.

This document and its content are protected under applicable copyright laws and provided for informative use only. No part of this document may be reproduced or transmitted in any form or by any means (electronic, mechanical, photocopying, recording, or otherwise), for any purpose, without the prior written permission of Schneider Electric.

Schneider Electric does not grant any right or license for commercial use of the document or its content, except for a non-exclusive and personal license to consult it on an "as is" basis.

Schneider Electric reserves the right to make changes or updates with respect to or in the content of this document or the format thereof, at any time without notice.

To the extent permitted by applicable law, no responsibility or liability is assumed by Schneider Electric and its subsidiaries for any errors or omissions in the informational content of this document, as well as any non-intended use or misuse of the content thereof.

Table of Contents

Safety Information.....	4
LK FUGA® Wiser Multiwire LED Rotary Dimmer	5
For your safety	5
About the device.....	7
Installing the device	7
Quick Home Connect.....	8
Pairing Wiser Wireless Switch with Rotary Dimmer	9
Operating a Dimmer.....	9
Resetting the Device in Quick Home Connect	11
LED Indications in Quick Home Connect.....	11
Troubleshooting in Quick Home Connect	11
Pairing the device with the Wiser Hub	12
Configuring the device	15
Setting the device location	17
Setting up the LED Indicator Behaviour	18
Setting up the Power On Behaviour.....	19
Using the device.....	20
Switching/Dimming the device manually	20
Adjusting the brightness level using app	22
Turning On/Off device using app	22
Schedule.....	23
Moments.....	25
Automation.....	28
Resetting the device	35
LED Indication.....	36
Troubleshooting	37
Technical Data	38
Compliance.....	39
Product Environmental Data.....	39
Declaration of Conformity.....	39
Trademarks.....	39

Safety Information

Important Information

Read these instructions carefully and look at the equipment to become familiar with the device before trying to install, operate, service, or maintain it. The following special messages may appear throughout this manual or on the equipment to warn of potential hazards or to call attention to information that clarifies or simplifies a procedure.



The addition of either symbol to a “Danger” or “Warning” safety label indicates that an electrical hazard exists which will result in personal injury if the instructions are not followed.



This is the safety alert symbol. It is used to alert you to potential personal injury hazards. Obey all safety messages that accompany this symbol to avoid possible injury or death.

DANGER

DANGER indicates a hazardous situation which, if not avoided, **will result in** death or serious injury.

Failure to follow these instructions will result in death or serious injury.

WARNING

WARNING indicates a hazardous situation which, if not avoided, **could result in** death or serious injury.

CAUTION

CAUTION indicates a hazardous situation which, if not avoided, **could result in** minor or moderate injury.

NOTICE

NOTICE is used to address practices not related to physical injury.

LK FUGA® Wiser Multiwire LED Rotary Dimmer



545D0103



545D6103

For your safety

⚠ DANGER

HAZARD OF ELECTRIC SHOCK, EXPLOSION, OR ARC FLASH

Safe electrical installation must be carried out only by skilled professionals. Skilled professionals must prove profound knowledge in the following areas:

- Connecting to installation networks.
- Connecting several electrical devices.
- Laying electric cables.
- Safety standards, local wiring rules and regulations.

Failure to follow these instructions will result in death or serious injury.

⚠ DANGER

HAZARD OF ELECTRIC SHOCK, EXPLOSION, OR ARC FLASH

The output may carry electric current even when the load is switched Off.

Disconnect the device from the supply by switching Off the upstream circuit breaker before working on the device or on the load.

Failure to follow these instructions will result in death or serious injury.

NOTICE

HAZARD OF EQUIPMENT DAMAGE

- Only connect dimmable load.
- Ensure that the device is disconnected from its circuit during the insulation resistance test.

Failure to follow these instructions can result in equipment damage.

About the device

LK FUGA® Wiser Multiwire LED Rotary Dimmer (hereinafter referred to as **dimmer**) has a rotary knob that can be used to switch and dim ohmic, inductive or capacitive loads manually or remotely.

Control options

Home control: To control the dimmer through the Wiser Home app, you will need the **Wiser Hub**.

Direct operation: The dimmer can always be controlled directly on-site. You can also connect any number of mechanical push buttons.

Functions

- The device can detect the load automatically.
- The device has internal self-protection, including thermal protection, overload resistance, short-circuit protection, soft start, and soft stop.

Installing the device

Refer to the installation instruction supplied with this product.

See LK FUGA® Wiser Multiwire LED Rotary Dimmer.

Quick Home Connect

Quick Home Connect is a wireless connectivity solution for Zigbee devices without the need for a Hub/Gateway or smartphone application. Quick Home Connect is your starting point for wireless home automation. It performs functions like switching, dimming and shutter control using the LK FUGA® Wiser wireless battery 4 button switch (hereinafter referred to as Wiser Wireless switch) via a Zigbee network.

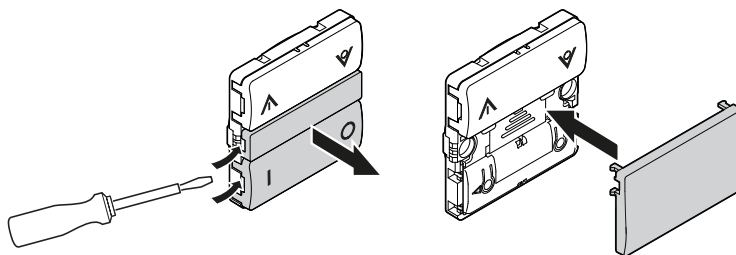
The **Wiser Wireless switch** is a battery-powered wireless push-button switch that is used to control Zigbee devices (such as dimmer, shutter, switch, and socket) within the same Zigbee network.

Limitations

- Quick Home Connect serves only as a room control solution.
- This solution does not support remote control, smartphone app usage, or scheduling features.

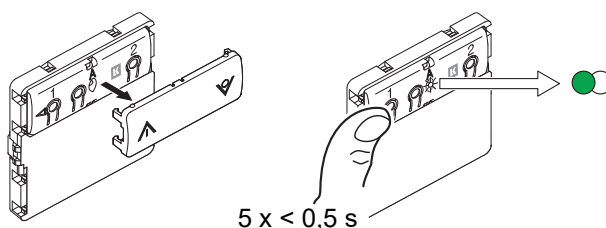
Pairing Wiser Wireless Switch with Rotary Dimmer

1. If you do not need the lower rocker of the Wiser Wireless switch, you can replace it with a blind plate.



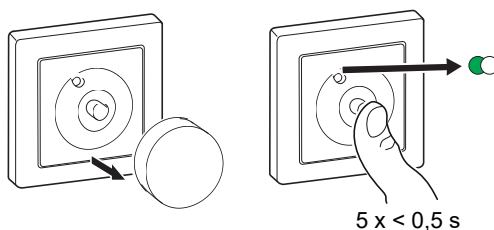
2. Remove the top rocker and short press the left push button 5 times in quick succession on the Wiser Wireless switch.

The status LED blinks green.



3. Remove the knob and short press the push button 5 times in quick succession.





The status LED blinks green.

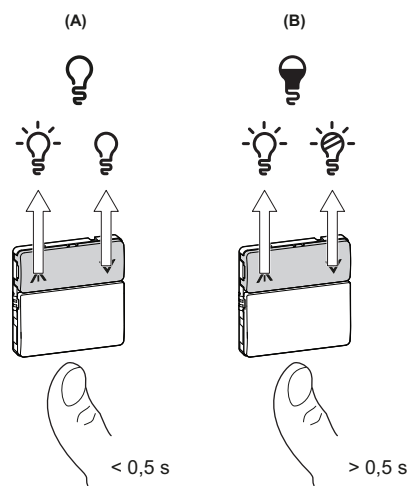


The light connected to the Rotary Dimmer blinks for a few times. The status LED stops blinking green on the Wiser Wireless switch and the Rotary Dimmer. The Rotary Dimmer can now be controlled by the Wiser Wireless switch.

Operating a Dimmer

You can switch the dimmer ON/OFF and adjust its brightness using the paired Wireless switch.

- Short press the left  or right  of the Wireless switch (< 0,5 s) to turn ON/OFF the connected load (A).
- Long press the left  or right  of the Wireless switch (> 0,5 s) to increase or decrease the brightness of the connected load (B).



Resetting the Device in Quick Home Connect

It is necessary to reset the devices in the following scenarios:



- Unpair the device in Quick Home Connect:
- Refer to
 - Resetting the Wireless switch
 - Resetting the Rotary dimmer

When reset is done successfully. The Wiser Wireless switch and device returns to factory default.

- Integrating into Wiser System
 - If you wish to integrate the devices into Wiser System, reset all the devices in Quick Home Connect and refer to pairing the device with Wiser Hub/ Gateway.

LED Indications in Quick Home Connect

Pairing the device in Quick Home Connect

User Action	LED Indication	Status
Press the push button 5 times in quick succession.	LED blinks green, once per second. 	Pairing mode is active for 60 seconds. When pairing is completed, LED stops blinking. 


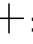

Troubleshooting in Quick Home Connect

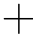

Symptom	Possible cause	Solution
LED displays amber on the device.	Pairing not completed and returned to factory default.	Pair the Wiser Wireless switch and the device again. Refer to <ul style="list-style-type: none"> • Rotary dimmer, page 9
Wiser Wireless switch not able to control the device reliably.	The Wiser Wireless switch and the device are too far away from each other.	Place the Wiser Wireless switch in a position closer to the device.
	The Wiser Wireless switch lost pairing.	Pair the device again. Refer to <ul style="list-style-type: none"> • Rotary dimmer, page 9
	The Wiser Wireless switch battery is discharged.	Replace the battery of the Wireless switch

Scenario	Procedure
Control multiple devices with one Wiser Wireless switch.	To control multiple devices with a single Wiser Wireless switch, start by pairing it with one device. Then, use the same Wireless switch to pair with additional devices. NOTE: You can pair up to 7 devices to a single Wiser Wireless switch.
2-gang Wiser Wireless switch with devices (relay switch, dimmer, shutter control, or socket outlet).	Pair either left or right Wireless switch with any of the devices (relay switch, dimmer, shutter control, or socket outlet). You can also pair another rocker of the Wireless switch with another device.

Pairing the device with the Wiser Hub

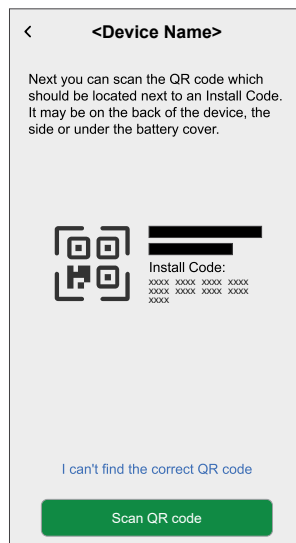
Using the Wiser Home app, pair your dimmer with the **Wiser Hub** to access and control the dimmer.

1. On the **Home** screen, tap .
2. Tap **Devices** >  > **Lights** >  **Rotary Dimmer**.

TIP: You can also navigate by tapping **Control** >  > **Lights** >  **Rotary Dimmer**.

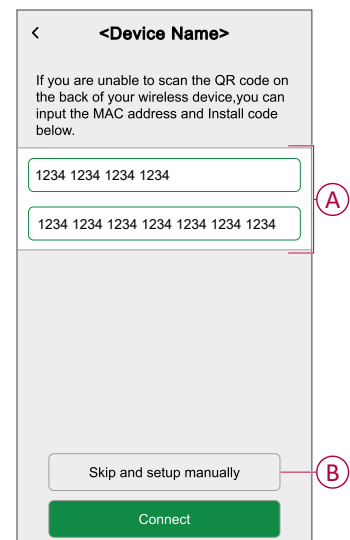
3. Tap **Scan QR code** and allow the Wiser Home app to access your camera. Then, scan the QR code located on the device.

NOTE: If you are unable to find the correct QR code, tap **I can't find the correct QR code** to pair the device manually and proceed to step 4.

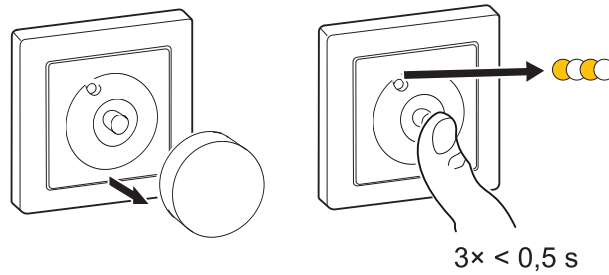


If the QR code is incorrect, a message **Incorrect QR code scanned** will appear. Tap **I can't scan the QR code** and choose one of the following options:

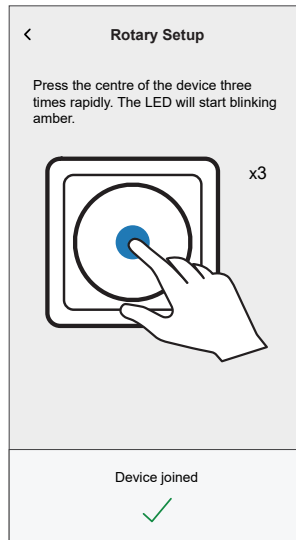
- **(A):** Enter the MAC Address and Install Code, then tap **Connect**. The app will verify if the MAC address and Install code are valid.
- **(B):** Tap this option if you are unable to find the MAC address and Install code.



4. Remove the knob and short press the push button 3 times.
The LED blinks amber.



Wait for a few seconds until the LED turns solid green. You can also see in the app that the device is joined.



NOTE: If the LED is blinking green and red, see the instructions by tapping the link **LED blinking green and red?**.

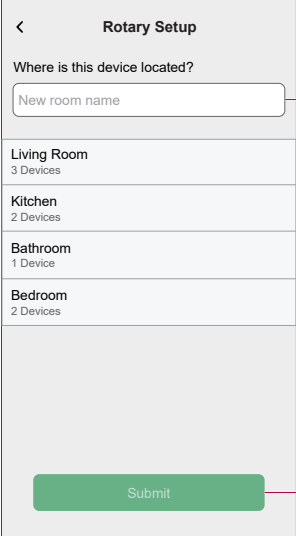
5. Enter the device name in the **Name** field and tap **Next**.

NOTE: The **Next** button will be enabled after entering a name in the name field.

6. Select the desired location of the device and tap **Submit** (B).

TIP: If you have not created any rooms, enter the room name in the Name (A) field.

NOTE: The **Submit** (B) button will be enabled after selecting a desired location.




The screenshot shows the 'Rotary Setup' screen. At the top, there is a back arrow and the title 'Rotary Setup'. Below the title, the question 'Where is this device located?' is displayed. Underneath, there is a text input field labeled 'New room name' with a red circle 'A' next to it. Below the input field, there are four selectable room options: 'Living Room' (3 Devices), 'Kitchen' (2 Devices), 'Bathroom' (1 Device), and 'Bedroom' (2 Devices). At the bottom of the screen, there is a green 'Submit' button with a red circle 'B' next to it.

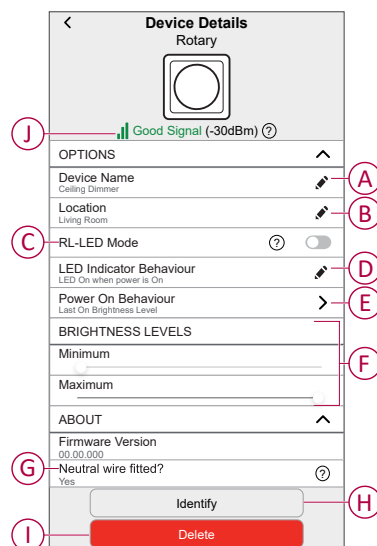
IMPORTANT: The next screen shows the **Device Settings** screen, where you can configure the device settings during the pairing process or later. If you prefer to configure it later, tap **Submit**. For more information on device settings, refer to the [Configuring the device, page 15](#) section.

Now, you can see the newly added dimmer on the **Control** tab under the **All** and **Room** tabs.





Configuring the device

Using the Wiser Home app, you can configure the device according to your preferences.

1. On the **Home** screen, tap .
2. Tap **Devices > Lights > Dimmer** to locate to the **Device Details** screen.





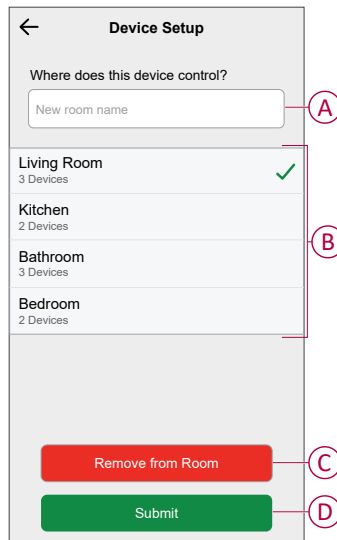
A	Device Name: Tap to change the name of the device.
B	Location: Tap to assign the dimmer to any room (such as living room, bedroom, kitchen etc). Refer to Setting the device location , page 17 for more details on how to set the location.
C	RL-LED Mode: You can improve the dimming quality in the app if you have problems with light flickering. Tap the toggle switch to enable the RL-LED Mode . NOTE: Refer to Technical Data , page 38 for more information.
D	LED Indicator Behaviour: Tap to set the LED indicator behaviour of the dimmer as per your preference. Refer to Setting up the LED Indicator Behaviour , page 18 for detailed information on each options.
E	Power On Behaviour: Tap to set the default brightness level of the dimmer when it is turned On. Refer to Setting up the Power On Behaviour , page 19 for detailed information on each options.
F	Minimum Brightness and Maximum Brightness: This setting allows you to set limits on the maximum and minimum brightness of the connected load. This is done to avoid flickering and switching Off the LED. Drag the slider bar to increase or decrease the Minimum Brightness and Maximum Brightness .
G	Neutral wire fitted?: You can check if the neutral wire is connected during the device installation. The Wiser Home app automatically detects the wiring mode based on the installation, eliminating the need for manual selection. <ul style="list-style-type: none"> • Yes: Installed with a neutral wire. • No: Installed without a neutral wire.
H	Identify: Tap to identify the device. The status LED blinks red and connected lighting devices blinks On/Off, upon successful identification of the dimmer. Tap OK when you finish identifying the device.

I	<p>Delete: Tap to remove the device from the system.</p> <p>NOTE:</p> <ul style="list-style-type: none">• Removing the device will also reset the dimmer. After reset, the LED turns amber indicating that the dimmer is ready for pairing.• If there is a problem while pairing or resetting the dimmer, refer to Resetting the device, page 35.
J	<p>Zigbee Signal Strength Indicator: Zigbee Signal Strength indicator which displays the current signal strength of the device.</p> <ul style="list-style-type: none">•  Good Signal (between 0 & -54dBm)•  Normal Signal (between -54 & -79dBm)•  Poor Signal (<-79dBm)•  No Signal (device is offline)

Setting the device location

Using the Wiser Home app, you can add your Wireless Switch to any room (such as bedroom, living room, dining room etc.).

1. On the **Home** screen, tap .
2. Tap **Devices**, select the device from the list for which you wish to change the location.
3. Tap **Location**  to open setup screen.
4. On the **Device Setup** screen, you can enter **New room name** (A) or select an existing room from the list (B).




TIP: If the device is already assigned, you can remove it from the existing room. Tap **Remove from Room** (C).

5. Once changes are done, tap **Submit** (D).

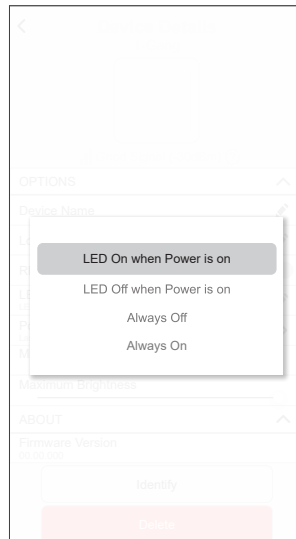
Setting up the LED Indicator Behaviour

Using the Wiser Home app, you can set the behaviour of the LED indicator on your device to identify the device status.

1. On the **Home** screen, tap .
2. Tap **Devices > Lights**.
3. Select the device you want to update and tap **LED Indicator Behaviour**.

NOTE: If you are unable to find the option in your app, reset the device to factory default and perform the pairing process.

4. Select one of the following options as per your preference.



LED On when Power is On	The LED turns On when the device is On.
LED Off when Power is On	The LED turns Off when the device is On.
Always Off	The LED stays Off all the time.
Always On	The LED stays On all the time.

Setting up the Power On Behaviour

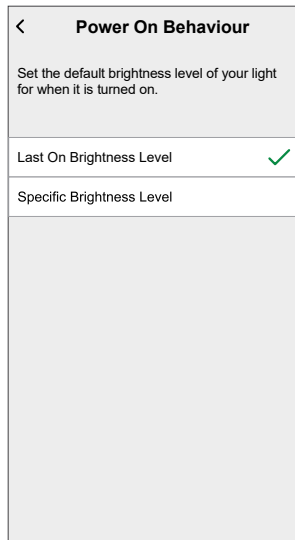
You can set the brightness level of your device when turned On.

1. On the **Home** screen, tap .
2. Tap **Devices > Lights**.
3. Select the device you want to update and tap **Power On Behaviour**.

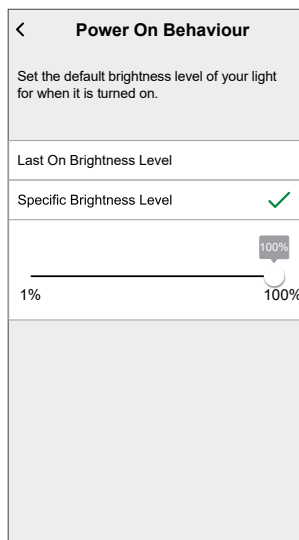
NOTE: If you are unable to find this option in your app, reset the device to factory default and perform the pairing process.

4. Select one of the following options as per your preference:

Last On Brightness Level: The light turns On at the same brightness as when it was last turned Off.



Specific Brightness Level: This option allows you to get the desired brightness level every time you turn On the light. Drag the slider bar to set the brightness.

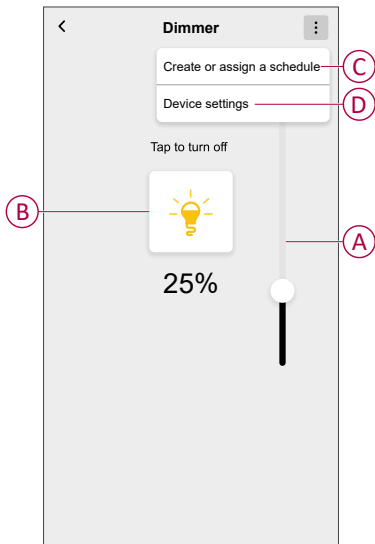


Using the device

The Device Control Screen allows you to switch ON/OFF, adjust the brightness level and control various settings.

On the **Control** tab, select the dimmer.

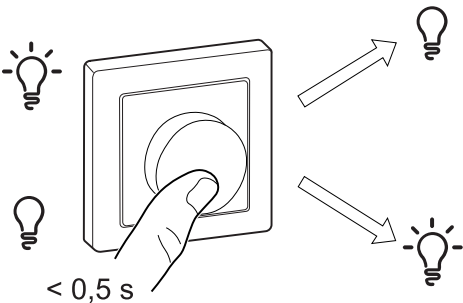
The Device Control Screen displays the following options:



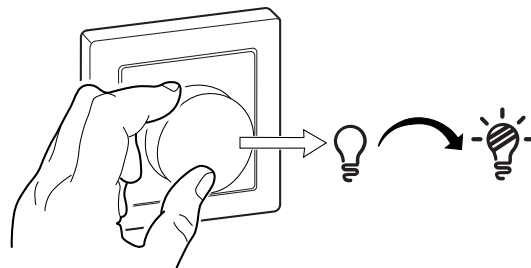
A	Tap to manually turn the device ON/OFF.
B	Drag the sliding bar up/down to increase/decrease the brightness of your dimmer. For more information, refer to the Adjusting the brightness , page 22.
C	Tap to redirect you to the Schedule screen, where you can create a schedule. For more information, refer to the Setting up a schedule , page 23 topic.
D	Tap to control various settings from the Device Settings screen. For more information, refer to the Configuring the device , page 15 topic.

Switching/Dimming the device manually

You can manually turn ON/OFF the dimmer and increase/decrease brightness level. This will provide power to the load connected to it.
Short press the push button (< 0,5 s) once to switch ON/OFF the dimmer.




To increase brightness, turn the dimmer knob clockwise, and to decrease brightness, turn it anti-clockwise.

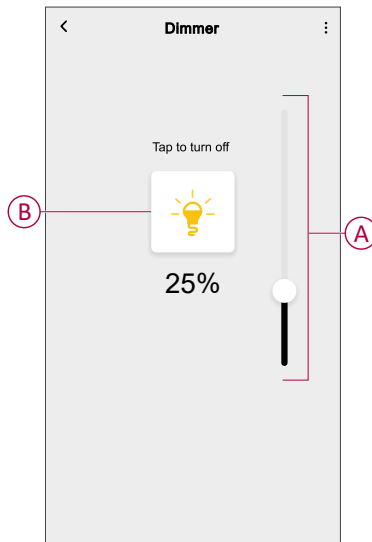


Adjusting the brightness level using app

By using the Wiser Home app, you can increase/decrease the brightness level of the dimmer.


1. On the **Control** tab, tap **All** devices or the room tab where the dimmer is located.
2. On the Device Control Screen, drag the sliding bar up/down to increase/decrease the brightness (A).

TIP: You can also turn On/Off the dimmer on the Device Control Screen, tap  (B) to turn On/Off dimmer.

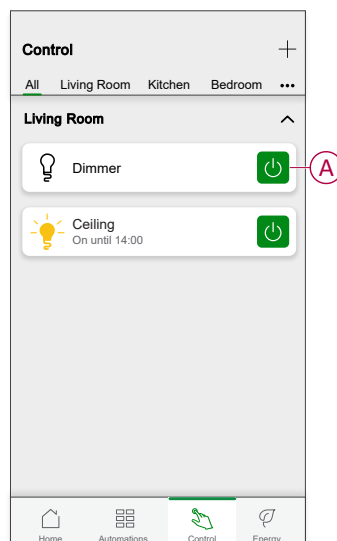


Turning On/Off device using app

Using the Wiser Home app, you can turn On/Off the dimmer remotely.

1. On the **Control** tab, tap **All** devices or the room tab where the dimmer is located.
2. Tap  (A) to turn On/Off dimmer.

TIP: You can also turn the device On/Off from the **Home** screen when you add it to your **Favourite**. To know more about Favourite, refer to the Managing Favourites topic in the respective System User Guide.


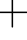


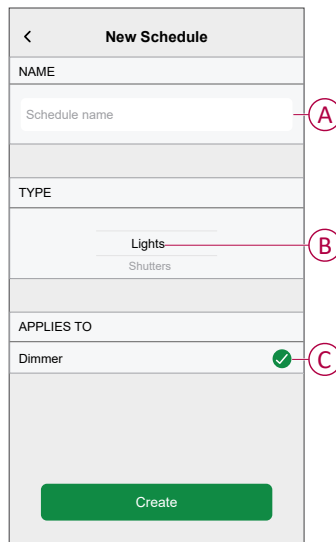
Schedule


You can set up schedules to specify the times at which a state of the device changes.

Setting up a schedule



The dimmer can be fully controlled by a schedule. Once the schedule is set, the dimmer operates at a given time.

1. On the **Home** screen, tap .
2. Go to **Schedules** >  to create a schedule.
3. Enter the name of the schedule (A).
4. In the **TYPE** menu, select **Lights** (B).
5. In the **APPLIES TO** menu, select **Dimmer** (C) from the listed devices.
6. Tap **Create** to setup events.




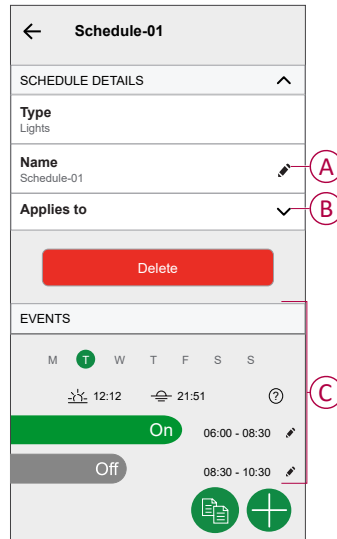
7. Under **EVENTS** menu, select a day and then tap  to add an event such as **STATE** (lights Off or dimming level in %) and **WHEN** (sunrise/sunset or specific time range).
8. Tap **Set** to save the schedule.

TIP:


- You can add multiple schedules based on your requirement. Select days, tap , set ON/OFF state and time.
- You can copy the existing schedule to another schedule or to the days of your choice. Tap .
 - Tap **Schedule** and select an existing schedule and tap **Copy**.
 - Tap **Day** and select the days you want to assign and tap **Copy**.
- When the schedule begins, you can see the **until time** in the following screens:
 - Device Control Screen.
 - Control tab under the device name.
 - Favourite devices section on the home screen.

Editing a schedule


1. On the **Home** screen, tap **Automations**  > **Schedules**.
2. Tap the schedule you want to edit.
3. Tap the **SCHEDULE DETAILS** and you can do the following actions:
 - Rename the schedule (A).
 - Within the **Applies to** (B) menu, you have the option to select from the listed devices or deselect those that are already selected.



NOTE: When the above changes are edited, the schedule is saved automatically.

4. Under the **EVENTS** (C) menu, you can do the following actions:
 - Tap  to update an event, such as **STATE** (lights Off or dimming level in %), **WHEN** (sunrise/sunset or a specific time range), and you can also delete an event.
 - Tap **Set** to save the schedule.



Deleting a schedule


1. On the **Home** screen, tap **Automations**  > **Schedules**.
2. Tap the schedule you want to delete.
3. Tap **SCHEDULE DETAILS**, tap **Delete**, and then select **OK**.

Moments

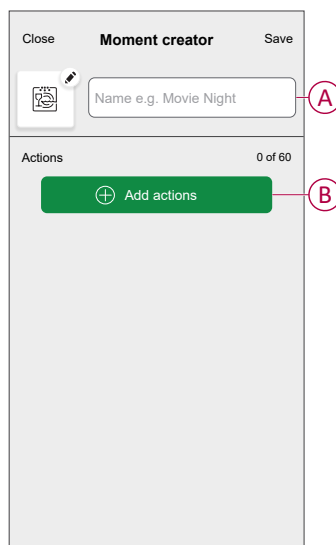
Moment allows you to group multiple actions that are usually performed together. By using the Wiser Home app, you can create moments based on your needs.

Creating a moment

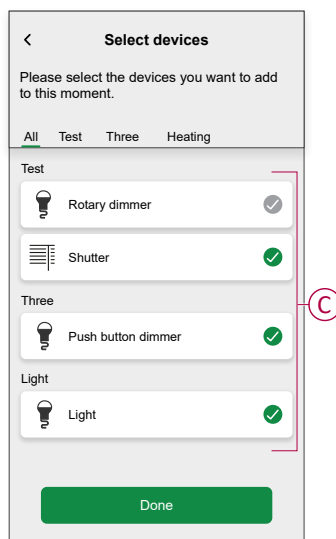
1. On the **Home** screen, tap .
2. Go to **Moments** and then tap  to create a moment.
3. Enter the name of the moment (A).

TIP: You can choose the cover image that represents your moment by tapping .

4. Tap **Add actions** (B) to select the list of devices.

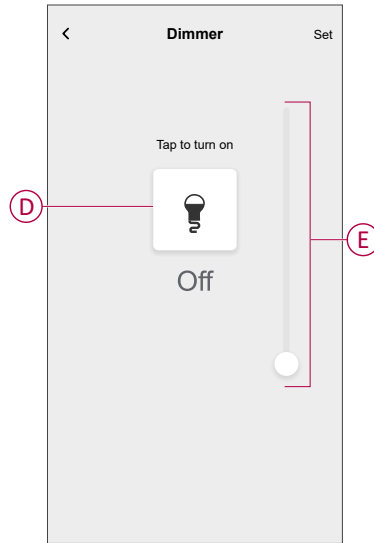


5. In the **Add actions** menu, you can select the devices (C).



6. Once the device are selected, tap **Done**.


7. On the **Moment creator** screen, tap the device to set the condition. For example if it is a dimmer:
 - Tap to turn On (D).
 - Drag the sliding bar up/down to increase/decrease the brightness (E) and tap **Set** on the top-right screen.





8. After setting all conditions, tap **Save**.

Once the moment is saved, it will appear on the **Moments** tab. Tap on the moment to enable it.




TIP:

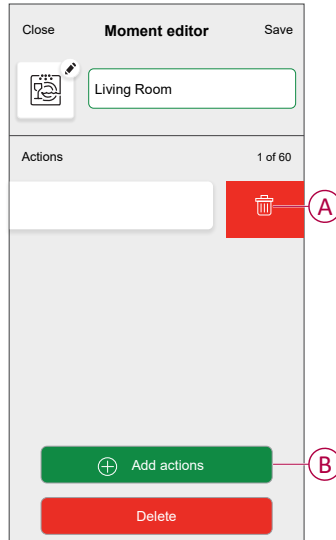
- If you want to see the created moments on the **Home** screen, go to **Home** >  > **Home Screen** > **Moments** and enable the **Moments** toggle switch.
- You can also rearrange the moments by tapping **Edit** from the Moments tab on the Home screen, or by tapping **Automation** > **Moments** > **Reorder**.

Editing a moment

1. On the **Home** screen, tap **Automations** .
2. Go to **Moments**, locate the moment you want to edit and tap .



3. On the **Moment editor** screen, you can perform following changes:

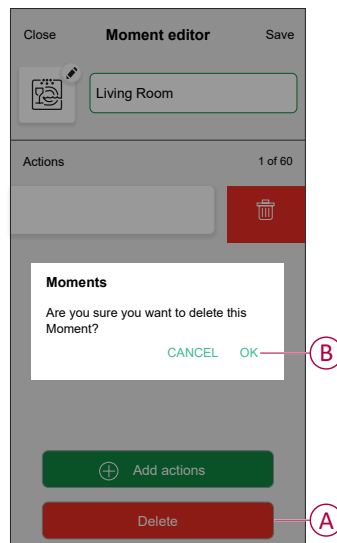
- Change the icon .
- Rename the moment.
- Tap each action to change the settings.
 - To remove an action, slide the action to the left and then tap  (A) to delete it.
 - Tap  **Add actions** (B) to add new action.



4. Tap **Save** to save the changes.

Deleting a moment



1. On the **Home** screen, tap **Automations** .
2. Go to **Moments**, locate the moment you want to delete and tap .
3. On the **Moment editor** screen, tap **Delete** (A) and then tap **OK** (B).



Automation


An automation allows you to trigger an action automatically or at scheduled times when certain conditions are met. By using the Wiser Home app, you can create automations based on your needs. This example demonstrates how a device works when the condition is met.

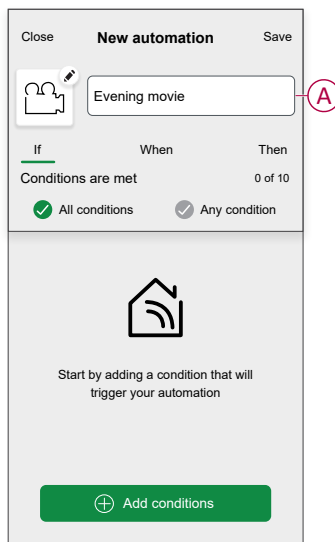
Creating an automation

1. On the **Home** screen, tap .
2. Go to **Automation** and then tap  to create an automation.

3. Enter the name of the automation (A) and select any of the following conditions to trigger an automation.

- **All conditions:** All conditions must be met to trigger an automation.
- **Any condition:** Any one of the condition must be met to trigger an automation.

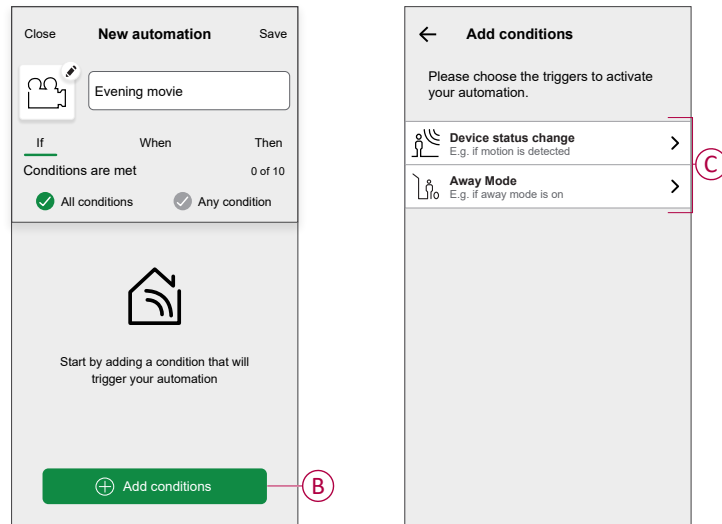
TIP: You can choose the cover image that represents your automation by tapping .



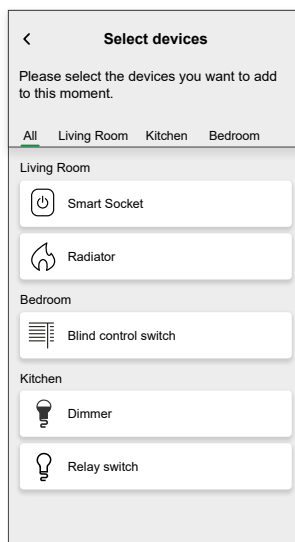
4. Tap **Add conditions** (B) and select any of the following (C).

- **Device status change** (Select the device): An automation will be triggered based on a device status, such as the opening of a shutter or the detection of movement by a motion sensor.
- **Away Mode** (Enable or Disable): Away mode can also trigger an automation to turn on the lights, close the shutter etc. Refer to the **Away Mode** topic in the respective System User Guide.

NOTE: Maximum 10 conditions can be added.



- a. In this example, we will select **Device status change** and choose a device to set the condition. Then, we will select the state of the device that will trigger the automation, such as the closed state of a blind control switch.



- b. After selecting the device, tap **Set** on the top-right screen.

TIP: If you want to change the condition, swipe it to the left and tap the bin icon. Then add a new condition with the required parameters.

5. To start your automation at a particular time, tap **When > Add time** and select any of the following (D):

NOTE: Maximum 10 time entries can be added.

- **Specific time of day** - The automation will trigger at a specific time of the day, such as at sunrise, sunset, or at 8:00 AM.
- **Period of time** - The automation will be trigger during time periods such as from sunrise to sunset, or sunset to sunrise, or from 8:00 AM to 5:00 PM.

Close New automation Save

e.g. Good Morning

If When Then

At this time 0 of 10

Start your automation at a specific time of day or define a period of time.

+ Add time

← Add time

Specific time of day
E.g. at 07:00 or at sunrise

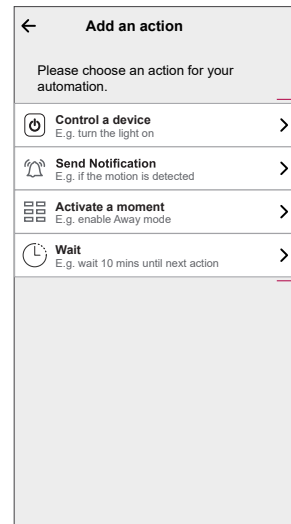
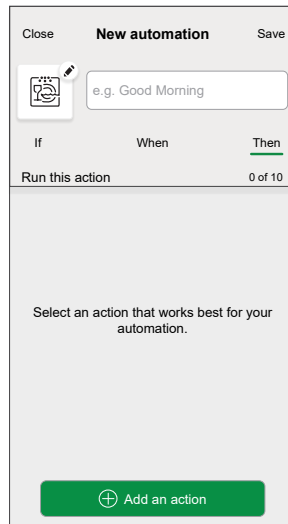
Period of time
E.g. from sunset to sunrise

D

6. To add an action, tap **Then > Add an action** and select any of the following (E):

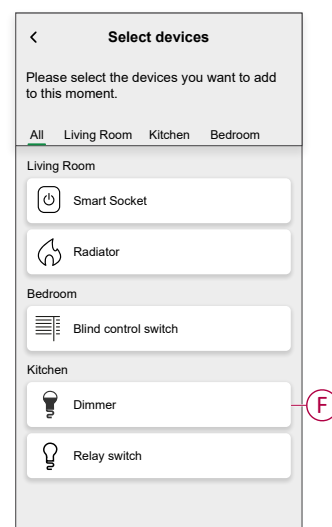
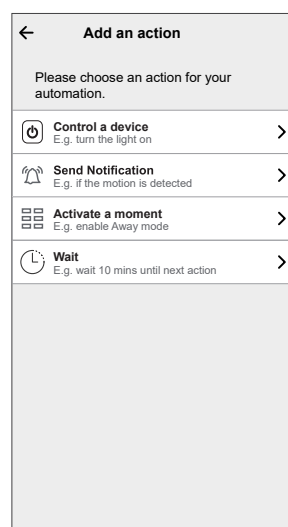
NOTE: Maximum 10 actions can be added.

- **Control a device** - Select the device and set the desired state of the device.
- **Send notification** - You will be notified if the condition is met.
- **Activate a moment** - Select a Moment to activate during the automation.
- **Wait** - This option allows you to add a delay in an automation sequence. You can set the wait time in increments of 1 hour and 1 minute, up to a maximum of 24 hours. This feature is useful for delaying actions within an automation.

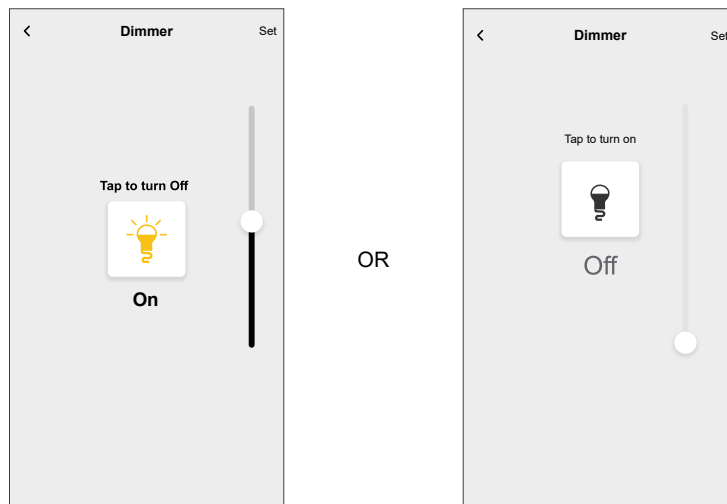


- a. In this example, we will initially select **Control a device** and select **Dimmer (F)** as the device to trigger an action, later, we will select for the **Wait** option to add a delay in the automation.

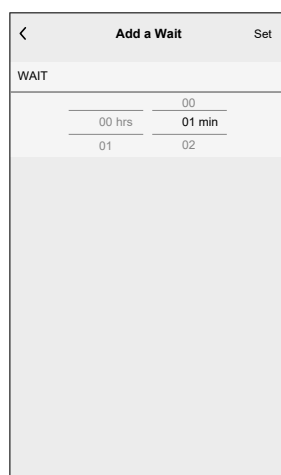
IMPORTANT: You cannot select the same device that you selected for **Add conditions** in Step 4. The device should be different.



- b. Set the state, such as increase/decrease the dimmer brightness or switching the dimmer On/Off. Then, tap **Set** on the top-right screen.

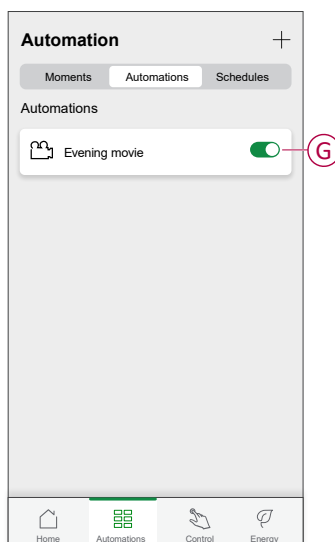


- c. Again, tap **Add an action** and select **Wait** option.
- d. Scroll through the minutes and set the wait time to 1 minute. Then, tap **Set** on the top-right screen.







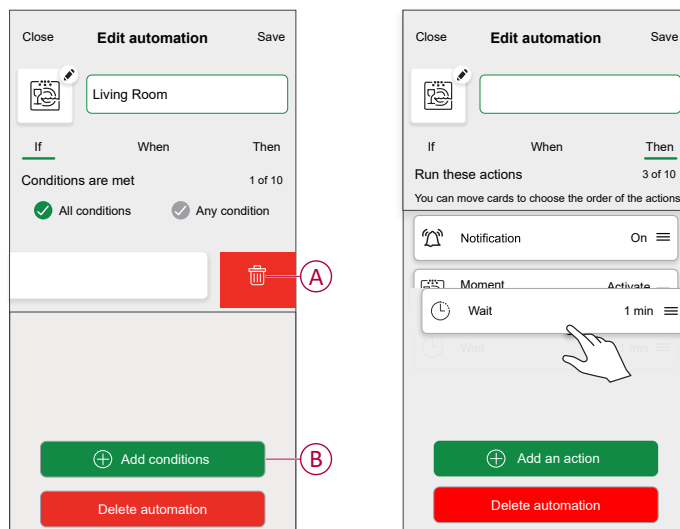
7. Tap **Save**.

The saved Automation is displayed on the **Automation** screen. Tap the toggle switch (G) on the Automation screen to enable/disable the Automation.




Editing an automation

1. On the **Home** screen, tap **Automations** .
2. Go to **Automation**, tap the automation you want to edit.
3. On the **Edit automation** screen, you can perform the following changes:
 - Change the icon .
 - Rename the automation.
 - Tap each condition to change the settings.
 - To remove a condition, slide the condition towards left and then tap  (A) to delete it.
 - Tap  **Add conditions** (B) to add new condition.
 - To change the order of actions, tap the **Then** option, and hold an action, then drag and drop to the desired position.

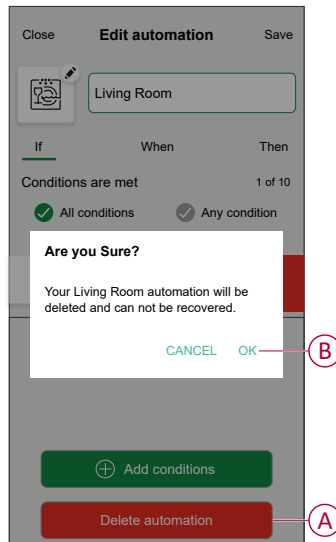


4. Tap **Save** to save the changes.

Deleting an automation

1. On the **Home** screen, tap **Automations** .
2. Go to **Automation**, tap the automation you want to delete.

3. On the **Edit automation** screen, tap **Delete automation** (A) and read the confirmation message and then tap **OK** (B).

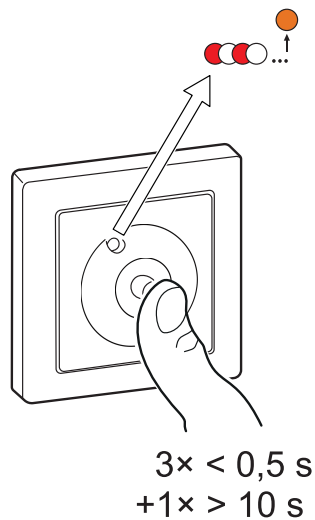


Resetting the device

You can reset the dimmer to factory default manually.



- Remove the knob and short-press the push button 3 times (<0.5 s) and then long-press the push button once (>10 s).
- After 10 s, the LED starts blinking red and then release the push button.
- Upon successful reset, the LED stops blinking.
- The dimmer restarts and blinks green for a few seconds.

NOTE: After reset, the LED turns amber indicating that it is ready for pairing.





LED Indication


Pairing

User Action	LED Indication	Status
Press the push button 3 times.	LED blinks amber per second. 	Pairing mode is active for 30 seconds. When pairing is completed, LED glows green for some time before turning Off. 


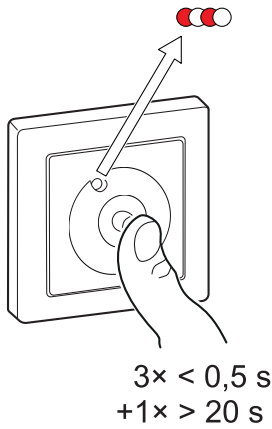
Resetting

User Action	LED Indication	Status
Press the push button 3 times and hold it down once for > 10 s.	After 10 s, the LED blinks red. 	The device is in reset mode. It is reset to the factory settings after 10 seconds. The device then restarts and the LED blinks green for a few seconds and then stays amber. 





Identifying the device

LED Indication	Status
The LED blinks red. 	The connected lighting devices blinks On/Off, upon successful identification of the dimmer.

Different connectivity mode

LED Indication	Status
The LED blinks green and red while paring. 	The device is trying to connect to other connectivity mode. Short-press the push button 3 times and then hold for 20 seconds. When the LED blinks red rapidly, release the push button. 

LED Indicator Mode/Backlight Mode















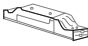


Load Status	ON	OFF
Reverse with load	No LED	
Consistent with load		No LED
Always Off	No LED	No LED
Always On		

Troubleshooting

Symptom	Solution
Dimming up not possible.	<ul style="list-style-type: none"> • Reduce/increase load. • Allow the dimmer to cool in case of overheating. • Change the load (if the load is incompatible with the dimmer).
Switching On not possible.	<ul style="list-style-type: none"> • Allow the dimmer to cool in case of overheating. • Reduce load. • Change load. • Check wiring between the push button and the dimmer.
Flickering at minimum brightness.	<ul style="list-style-type: none"> • Increase minimum brightness (if flickering still persists, install a 31LCDA load correction device). • Change the load (if the minimum brightness is insufficient). • Set to RL LED mode, page 15.
Flickering	<ul style="list-style-type: none"> • Change load. • Set to RL LED mode, page 15.
Only slight dimming capability	<ul style="list-style-type: none"> • Change dimming range. • Change the load (if the load is incompatible with the dimmer). • Set to RL LED mode, page 15.
The device is not ready to pair after the device is removed from the app.	Reset to factory default settings, refer to resetting the device , page 35.

Technical Data

Nominal power

Load type	Load name	Load value	
		2 wire (without neutral)	3 wire (with neutral)
	LED	7–130 W (max. 0,8 A)  RC 7–80 W (max. 0,5 A)  RL	0–130 W (max. 0,8 A)  RC 0–80 W (max. 0,5 A)  RL
	Incandescent lamp	14–200 W  R	0–200 W  R
	Halogen lamp	14–150 W  R	0–150 W  R
	Iron core transformer	14–150 VA  RL	0–150 VA  RL
	Electronic step-down converter	14–150 VA  RC	0–150 VA  RC

Nominal voltage	AC 230 V ~, 50 Hz
Standby	Max 0.4 W
Connecting terminals	Screw terminals for max. 2 x 2.5 mm², 0,5 Nm
Neutral conductor	Recommended
Ambient temperature	5 to 25 °C (temporarily up to 35 °C)
Storage temperature	-25 °C to 70 °C
Transport temperature	-25 °C to 70 °C
Extension unit	Single push-button, unlimited number, max. 50 m
External fuse protection	16 A circuit breaker
Internal device self-protection	Thermal protection Overload-resistant Short-circuit protection
Operating frequency	2405 - 2480 MHz
Max. Radio-frequency power transmitted	< 10 mW
Communication protocol	Zigbee 3.0 certified

Compliance

Product Environmental Data

Find and download comprehensive environmental data about your products, including RoHS compliance and REACH declarations as well as Product Environmental Profile (PEP), End-of-Life instructions (EOLi) and much more.

<https://www.se.com/myschneider>



General information about Schneider Environmental Data Program

Click the link below to read about Schneider Electric's Environmental Data Program.

<https://www.se.com/ww/en/about-us/sustainability/environmental-data-program/>



Declaration of Conformity

Hereby, Schneider Electric Denmark A/S, declares that this product is in compliance with the essential requirements and other relevant provisions of RADIO EQUIPMENT DIRECTIVE 2014/53/EU.

Declaration of conformity can be downloaded on:

- <https://www.go2se.com/ref=545D0103>
- <https://www.go2se.com/ref=545D6103>

Trademarks

This guide makes reference to system and brand names that are trademarks of their relevant owners.

- Zigbee® is a registered trademark of the Connectivity Standards Alliance.

- Apple® and App Store® are brand names or registered trademarks of Apple Inc.
- Google Play™ Store and Android™ are brand names or registered trademarks of Google Inc.
- Wi-Fi® is a registered trademark of Wi-Fi Alliance®.
- Wiser™ is a trademark and the property of Schneider Electric, its subsidiaries and affiliated companies.
- Amazon Alexa™ is a trademark of AMAZON TECHNOLOGIES, INC.
- Google Home™ is a trademark of Google INC.

Other brands and registered trademarks are the property of their respective owners.

Schneider Electric Denmark A/S
Lautrupvang 1, 2750 Ballerup

Denmark

+45 88 30 20 00

www.se.com

As standards, specifications, and design change from time to time, please ask for confirmation of the information given in this publication.

© 2025 – 2025 Schneider Electric. All rights reserved.

DUG_LK FUGA Wiser Multiwire Rotary Dimmer_WH-00