

Odace - Connected Thermostat 2 A

Device user guide

Information about features and functionality of the device.

01/2025



Legal Information

The information provided in this document contains general descriptions, technical characteristics and/or recommendations related to products/solutions.

This document is not intended as a substitute for a detailed study or operational and site-specific development or schematic plan. It is not to be used for determining suitability or reliability of the products/solutions for specific user applications. It is the duty of any such user to perform or have any professional expert of its choice (integrator, specifier or the like) perform the appropriate and comprehensive risk analysis, evaluation and testing of the products/solutions with respect to the relevant specific application or use thereof.

The Schneider Electric brand and any trademarks of Schneider Electric SE and its subsidiaries referred to in this document are the property of Schneider Electric SE or its subsidiaries. All other brands may be trademarks of their respective owner.

This document and its content are protected under applicable copyright laws and provided for informative use only. No part of this document may be reproduced or transmitted in any form or by any means (electronic, mechanical, photocopying, recording, or otherwise), for any purpose, without the prior written permission of Schneider Electric.

Schneider Electric does not grant any right or license for commercial use of the document or its content, except for a non-exclusive and personal license to consult it on an "as is" basis.

Schneider Electric reserves the right to make changes or updates with respect to or in the content of this document or the format thereof, at any time without notice.

To the extent permitted by applicable law, no responsibility or liability is assumed by Schneider Electric and its subsidiaries for any errors or omissions in the informational content of this document, as well as any non-intended use or misuse of the content thereof.

Table of Contents

Safety Information.....	4
Odace - Connected Thermostat 2 A	5
For your safety	5
About the device.....	6
Installing the device	7
Device presetting.....	8
Pairing the device	10
Configuring UFH actuator	11
Configuring the device	14
Changing the device location	14
Locking user interface	15
Setting the display brightness	16
Advanced device settings	17
Room setting.....	21
Identifying the device	22
Using the device.....	23
Setting the room temperature manually	23
Setting the room temperature using the app.....	24
Setting boost mode manually	26
Creating a Schedule/Event	27
Creating a Moment	29
Creating an automation	31
Built in Automation	37
Voice control.....	39
Removing the device	40
Resetting the device	41
Cleaning	42
LED Indications	43
Troubleshooting	45
Technical Data	46
Compliance	47
Compliance information for Green Premium products.....	47
EU Declaration of Conformity	48
Trademarks.....	48

Safety Information

Important Information

Read these instructions carefully and look at the equipment to become familiar with the device before trying to install, operate, service, or maintain it. The following special messages may appear throughout this manual or on the equipment to warn of potential hazards or to call attention to information that clarifies or simplifies a procedure.



The addition of either symbol to a “Danger” or “Warning” safety label indicates that an electrical hazard exists which will result in personal injury if the instructions are not followed.



This is the safety alert symbol. It is used to alert you to potential personal injury hazards. Obey all safety messages that accompany this symbol to avoid possible injury or death.

DANGER

DANGER indicates a hazardous situation which, if not avoided, **will result in** death or serious injury.

Failure to follow these instructions will result in death or serious injury.

WARNING

WARNING indicates a hazardous situation which, if not avoided, **could result in** death or serious injury.

CAUTION

CAUTION indicates a hazardous situation which, if not avoided, **could result in** minor or moderate injury.

NOTICE

NOTICE is used to address practices not related to physical injury.

Odace - Connected Thermostat 2 A



S5x0619

For your safety

⚡⚠ DANGER

HAZARD OF ELECTRIC SHOCK, EXPLOSION, OR ARC FLASH

Safe electrical installation must be carried out only by skilled professionals. Skilled professionals must prove profound knowledge in the following areas:

- Connecting to installation networks.
- Connecting several electrical devices.
- Laying electric cables.
- Safety standards, local wiring rules and regulations.

Failure to follow these instructions will result in death or serious injury.

⚡⚠ DANGER

RISK OF FATAL INJURY FROM ELECTRIC SHOCK

The output may carry electric current even when the load is switched Off.

- Disconnect the fuse in the incoming circuit before working on the device.
- Make sure the mains input has a 2 A fuse.

Failure to follow these instructions will result in death or serious injury.

About the device

The Odace - Connected Thermostat 2 A (hereinafter referred to as **thermostat**) is mainly used for water-based heating and cooling applications, such as water-based underfloor heating and radiator heating.

Thermostat features:

- Measure & control the room temperature
- Dot-matrix displays (current room and set temperature)
- Device lock
- Valve Protection
- Heat/cool changeover
- Volt-free or live control, normally open or normally closed.
- Smart schedule through a Wiser Home app

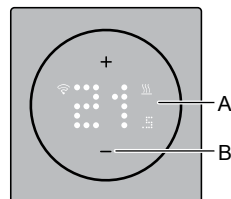
Operating elements

A. Dot-matrix display

- Wireless connectivity LED (📶)
- Heat and cool demand LED (🔥/❄️)

TIP: All LED indications are explained in the LED behavior chapter, page 43.

B. Touch button: + and -



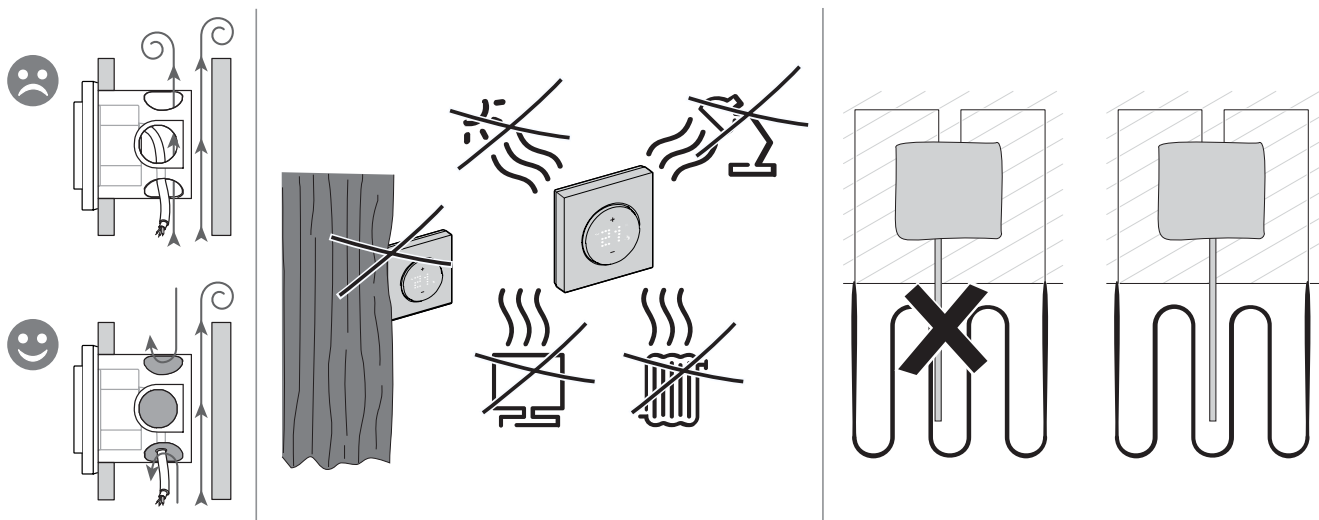
Installing the device

Refer to the **Connected Thermostat Insert 2 A** installation instruction supplied with this product.

Selecting the installation site:

In order for the thermostat to be operated, the internal temperature sensor must be protected as far as possible against external influences and temperature fluctuations. This helps to guarantee reliable detection of the room temperature. The following should therefore be taken into account when considering the installation site:

- Minimum installation height: 1.5 m above the floor.
- Do not install too close to windows, doors or ventilation openings.
- Do not install above heaters or other heat sources.
- Do not cover or install behind curtains.
- Avoid direct sunlight and light from lamps.
- Do not install in power strips above or next to components that produce heat, such as dimmers or electronic switches.
- Mounting on the cavity wall requires proper sealing of the conduit box or installation tube, to prevent airflow from affecting temperature sensor performance.



Device presetting

You can preset the thermostat on the first power-on or immediately after a factory reset. The thermostat will require the selection of a preset to pre-configure settings depending on what the thermostat is directly controlling, which allows the thermostat to function correctly for the intended use case. Preset selection is a manual process and all preset uses a PI control algorithm which provides highly stable results.

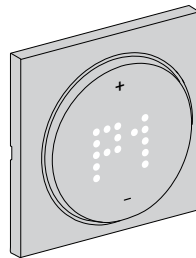
You can choose one of three preset configurations:

Preset	Configuration	Cycle Time* (min)	Valve Protection
P1	Heat Pump/Oil Boiler	20	Off
P2	Hydronic Radiator/ Gas Boiler	10	Off
P3	Hydronic Underfloor	10	On

***Cycle time:** This setting determines the length of each on/off cycle of the output relay. The percentage of time within that cycle time that the relay is on is varied based on demand. A longer cycle time may be more appropriate for slow heating surfaces, such as a concrete floor. A short cycle time is more appropriate for faster heating surfaces, such as an electric panel heater.

Initial preset configuration (by default)

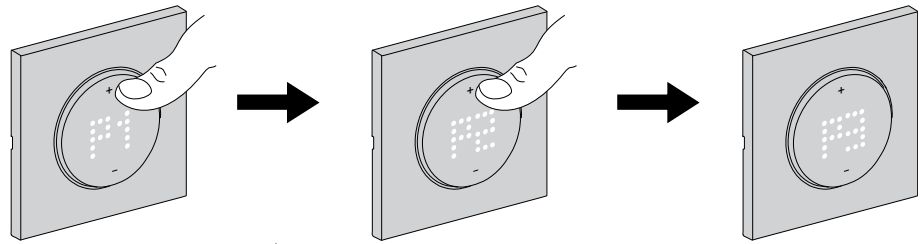
When the thermostat is first powered on or immediately after a factory reset, by default "P1" flashes on the matrix LED's to indicate Preset (P1) is selected to provide initial configuration.



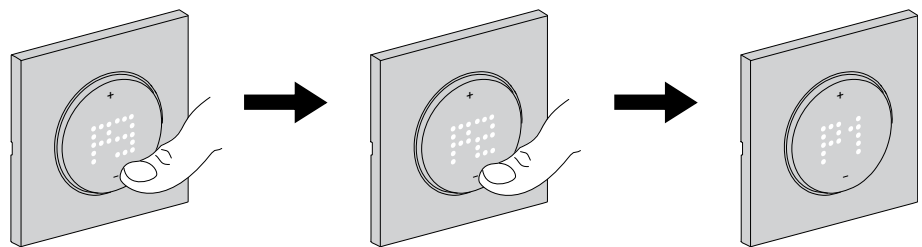
Modifying the preset value

When + button is pressed, it increases the preset value by 1 and pressing - button, it decreases the preset value by 1.

For example, when + button is pressed, preset P1 becomes P2, continue to press the + button, and the preset changes to P3.



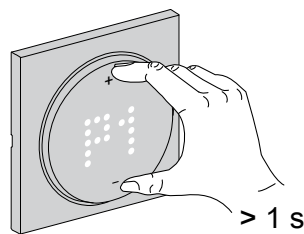
Similarly, when - button is pressed, preset P3 changes to P2, continue to press the - button, preset changes to P1.



Confirming the preset




Select the preset that meets your needs using the +/- buttons, and then hold the +/- simultaneously for > 1 s to confirm the selection.

For **example**, P1 is confirmed.

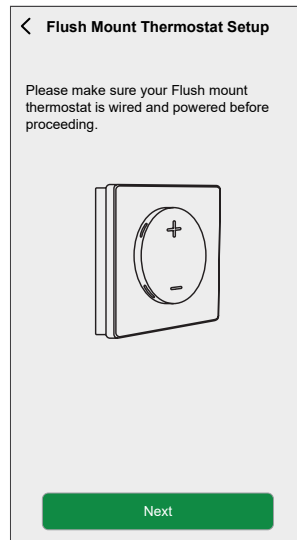


Pairing the device


Using the Wiser Home app, you can pair your thermostat with the **Wiser Hub** to access and control the thermostat.
To pair the thermostat:

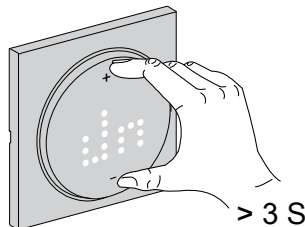
1. On the Home page, tap .
2. Tap **Devices** >  > **Climate** tab.
3. Tap  > **Next**.

The next screen shows the thermostat joining process.




4. On thermostat press and hold **+** and **-** touch button simultaneously (> 3 s) until **Jn** appears on the device.

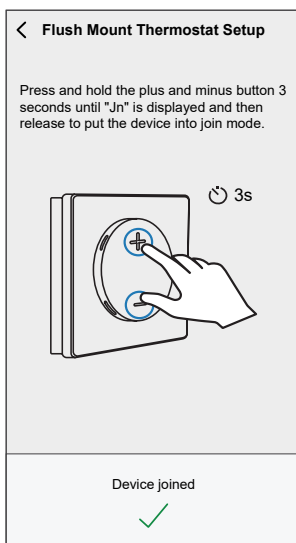
The wireless  LED blinks amber when joining.



5. Wait for a few seconds until the wireless  LED on the thermostat turns green.

NOTE: The wireless  LED on the thermostat turns red if it is unable to connect. For more information, refer to [Troubleshooting](#), page 45.

Upon successful pairing, the app displays the device joining status.



6. Assign a thermostat to the room and then tap **Submit**.

NOTE: If the thermostat's preset is set to P3 (Hydronic Underfloor) and it is connected to a Wiser Underfloor Heating (UFH) actuator, then assign a room and tap **Next** to configure UFH. Refer [configuring UFH actuator](#), page 11 to completed the setup.

Configuring UFH actuator

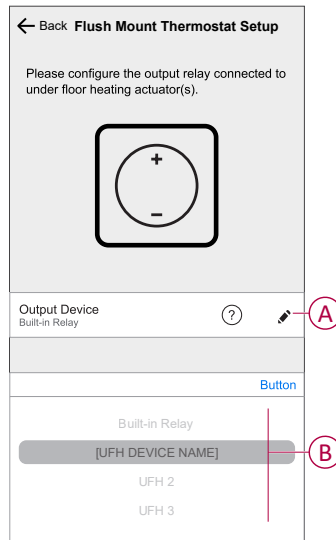
When thermostat's preset is set to P3 (Hydronic Underfloor) and it is connected with Wiser under floor heating (UFH) actuator, pairing process continues to configure UFH system. Thermostat will use UFH to control room temperature.

NOTE: Refer, [pairing the device](#), page 10.

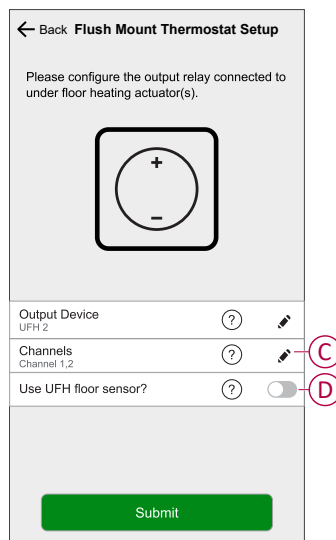
1. Assign a room to the thermostat once it has been paired and then tap **Next** to configure UFH.

2. Tap **Output Device** (A) for slide up menu and select the UFH (B) from the list which is connected to the thermostat.

NOTE: Built-in relay is selected by default as the output device, there are no other settings for it.



3. Tap on **Channels** (C) and select the channel which controls the room where thermostat is located.
4. Enable toggle switch (D), if you want monitor the floor temperature using UFH floor sensor.

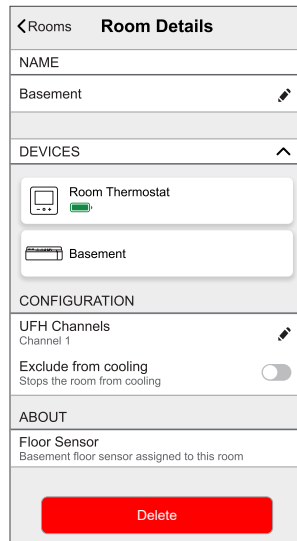


NOTE:

- To change the UFH channel room refer [Assigning a channel to the room](#).
- Only one UFH floor sensor can be assigned to a room if you want to update refer [Setting Floor Sensor Location](#).

5. Tap **Submit**
Thermostat is now listed under room tab.



IMPORTANT: If cooling input is enabled in UFH make sure in **Room Setting > Excluded From Cooling** toggle switch is On. This can be useful if there are areas in a building that do not require cooling, such as storage rooms or unoccupied spaces. Refer UFH Cooling input.



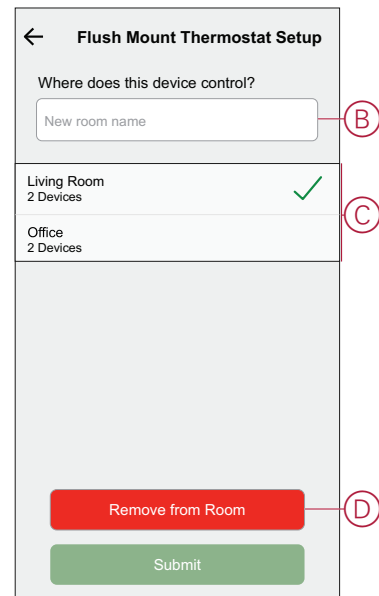
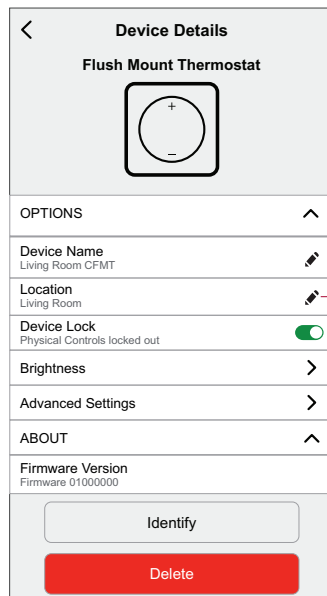
Configuring the device

Changing the device location

Using the Wiser Home app, you can change the thermostat location. To change the thermostat location:



1. On the Home page, tap .
2. Tap **Devices** >  > **Location (A)** for any of the following:
 - To create a new room, enter the room name (B) and tap **Submit**.
 - Change the device location (C).


NOTE: To remove the device from the room, tap **Remove from Room (D)**.

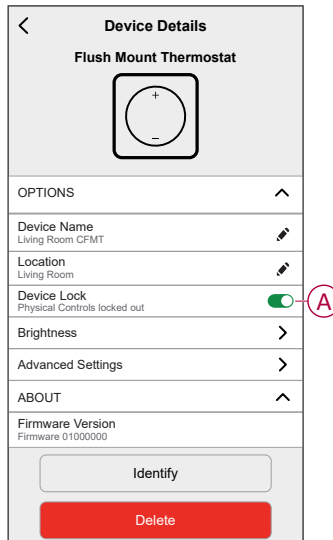


Locking user interface

Using the Wiser Home app, you can lock the thermostat controls . This will prevent children from changing the temperatures in your room by playing with it.

1. On the Home page, tap .
2. Tap **Devices** >  > **Device Lock (A)** to lock or unlock the thermostat control.



TIP: When the thermostat lock is active, a  will appear next to the thermostat.



Setting the display brightness

Using the Wisier Home app, you can set the thermostat display brightness such as active (brightness during interaction) and inactive (brightness after 60 seconds of inactivity).

To set the thermostat display brightness:

1. On the Home page, tap .
2. Tap **Devices** >  > **Brightness** (A) to set the active and inactive brightness using the sliding bar (B).

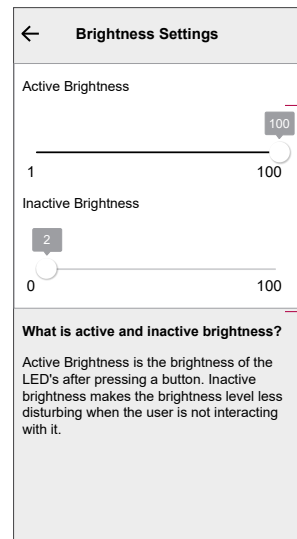
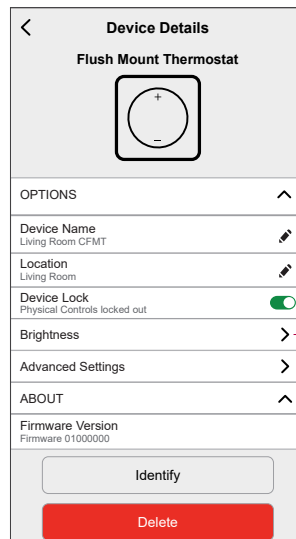
NOTE:

- Default active screen brightness is 100%. Range from 1%~100%, and the setting accuracy is 1%.
- Default inactive screen brightness is 0% range is 0%~100%, the setting accuracy is 1%, and it must be <= active brightness.

For example:

Allowed: Both active and inactive brightness can be set to 50%.

Not allowed: Inactive brightness set to 60 % and active brightness set to 50 %.





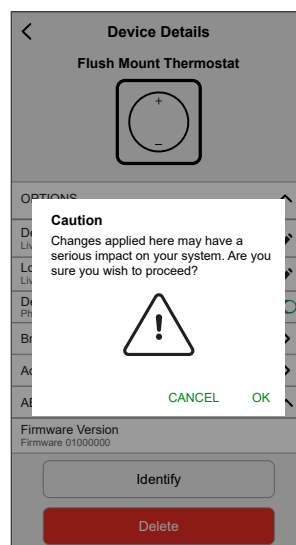
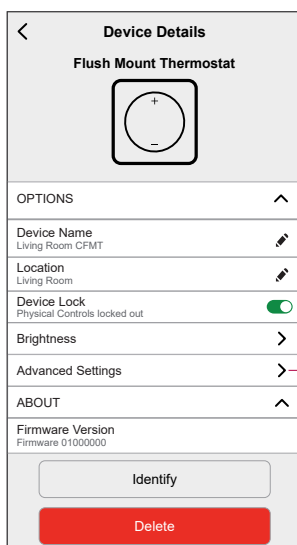
Advanced device settings

The Wiser Home app offers advanced settings for the thermostat. These settings include toggle switches that let you enable or disable valve protection, enable cooling input and output relay, and set cycle time and universal input.

NOTE: Making changes to advanced settings can severely impact your system, so be sure to understand its impact before applying any changes to the advanced settings.

To do advanced settings:

1. On the Home page, tap .
2. Tap **Devices** >  > **Advanced Settings (A)**.
3. Read the caution and tap **OK**.

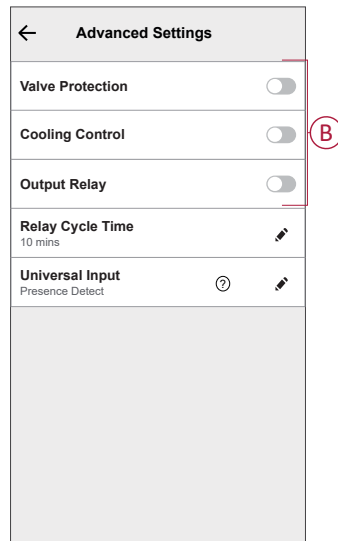


Toggle switch

In advanced settings, you can enable or disable any features using the toggle switch.

Tap the toggle switch (B) to enable or disable any of the features:

- **Valve Protection**
Activate output every two weeks to prevent valve calcification.
- **Cooling Control:** (setting only available when thermostat's preset is set to P3 - Hydronic Underfloor)
Enable input for cooling switchover detection.
- **Output Relay:**
This option is to turn off the relay, if used as a temperature measurement device.



Relay Cycle Time

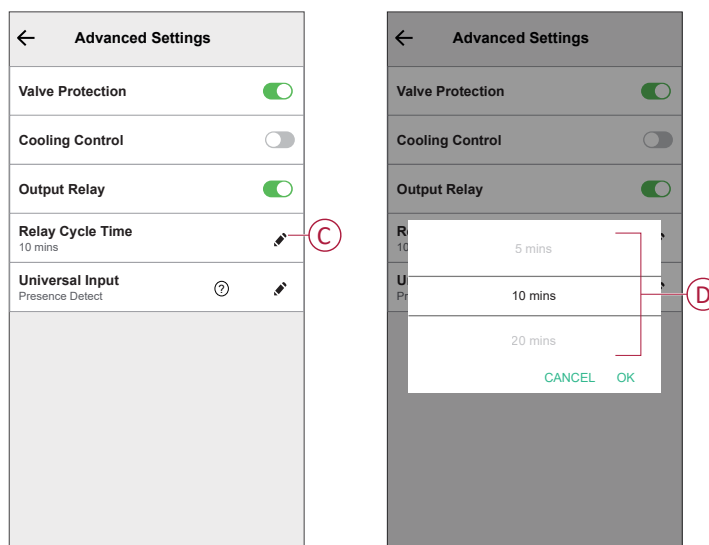
In advanced settings, you can choose relay cycle time. This setting determines the length of each on/off cycle of the output relay. The percentage of time within that cycle time that the relay is on is varied based on demand. A longer cycle time may be more appropriate for slow heating surfaces, such as a concrete floor. A short cycle time is more appropriate for faster heating surfaces, such as an electric panel heater.

For example, 20 mins = three cycle per hour.

NOTE: A relay cycle time can be viewed only when the output relay is on.

Tap **Relay Cycle Time (C)** and choose any (D):

- 5 mins
- 10 mins
- 20 mins
- 30 mins

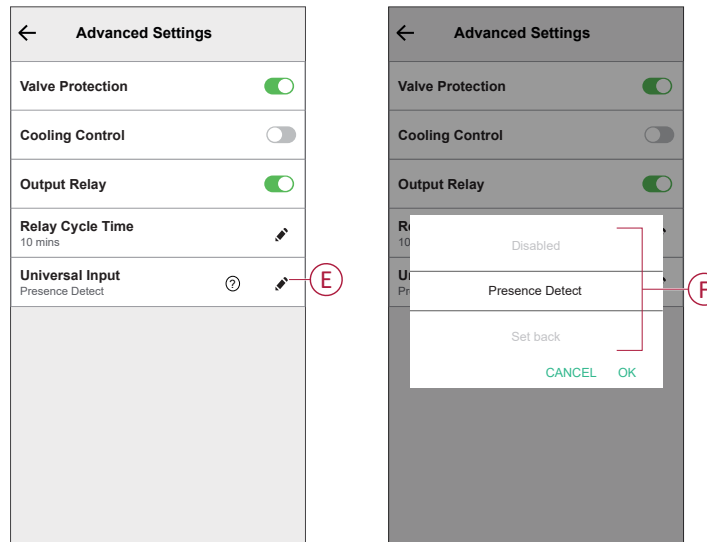


Universal Input

Universal Input can provide a setback of 2° C when input is controlled by a setback timer or a room proximity sensor. In advanced settings, you can choose Universal Input.

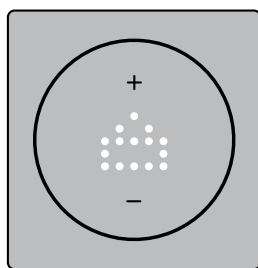
Tap **Universal Input** (E) and choose any (F):

- **Disabled** – Any change of state on the input is ignored on room occupancies.
- **Presence Detect** – Input presence indicates that the room is occupied.
- **Setback** – Indicates thermostat should follow unoccupied setpoint.



When the universal input is configured for presence detection and detects room occupancy, the thermostat adheres to the user-set setpoint. Upon detecting the room as unoccupied, the thermostat maintains the same setpoint for the next occupancy time which is set in room settings. If there is no change in occupancy status during this period, the thermostat reverts to the unoccupied setpoint. Refer room settings, page 21 for more information on occupancy duration.

When presence detect or setback has been activated, thermostat dot matrix display shows away mode as below indicating input detection.



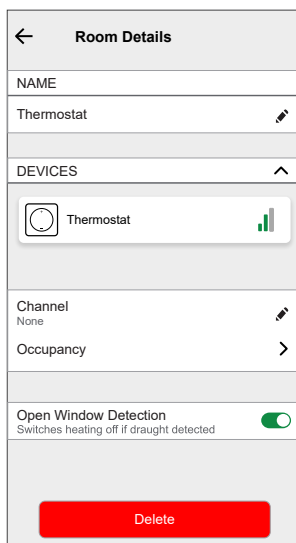
Example for heating mode: If the user sets the thermostat's setpoint to 23° C Celsius and the inputs detect room occupancy, the thermostat will adhere to the 23° C setpoint. However, if the room becomes unoccupied, the thermostat will maintain the 23° C setting for the next 10 mins before transitioning to the unoccupied setpoint of 21° C, which is 2° C lower than the user's initial setting.

Example for cooling mode: If the user sets the thermostat's setpoint to 18° C Celsius and the inputs detect room occupancy, the thermostat will adhere to the 18° C setpoint. However, if the room becomes unoccupied, the thermostat will maintain the 18° C setting for the next 10 mins before transitioning to the unoccupied setpoint of 20° C, which is 2° C higher than the user's initial setting.

Room setting

You can set channel, occupancy and window detection in the room settings.

1. On the Home page select the thermostat for which you want to change room setting.
2. On control panel of thermostat, tap **Room setting** to open room details.

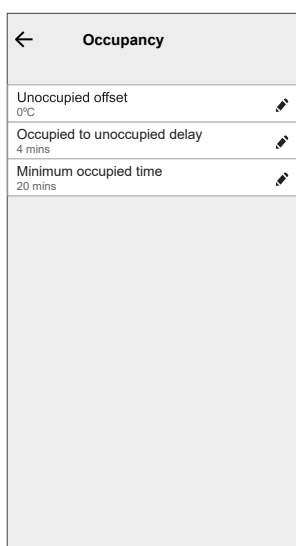


Channel settings

If the thermostat and under floor heating device are in same room you can change channel which is assigned to same room as thermostat by tapping on **Channel** in room details and select the channel.

Occupancy

You can change the occupancy settings according to user requirement by tapping **Occupancy** in room details.



- **Unoccupied Offset:** You set the setpoint when room is unoccupied. This helps to save energy by allowing the temperature to drift from the normal setpoint to a less comfortable but more energy-efficient level when the space is not in use.

- **Occupied to Unoccupied Delay:** You can set the time delay between a room being occupied and then transitioning to an unoccupied state. This delay ensures that the system doesn't immediately switch to an unoccupied mode when a room becomes vacant, preventing unnecessary fluctuations and providing a grace period in case the room becomes occupied again shortly after being unoccupied. This delay helps to optimize energy efficiency and maintain comfort within the building.
- **Minimum Occupied Time:** You can set the minimum duration for which the thermostat detects occupancy before it takes certain actions, such as adjusting temperature settings to unoccupied setpoint. This feature helps prevent the system from reacting to short-term movements or presence, ensuring that it responds to sustained occupancy, thereby optimizing energy usage and maintaining comfort effectively.



Open window detection

Windows open detection in a thermostat is a feature that utilizes sensors to detect when windows or doors are open in the vicinity. When an open window or door is detected, the thermostat can adjust the heating system to conserve energy. This helps improve energy efficiency and can contribute to cost savings by ensuring that the system operates more intelligently in response to changes in the indoor environment.

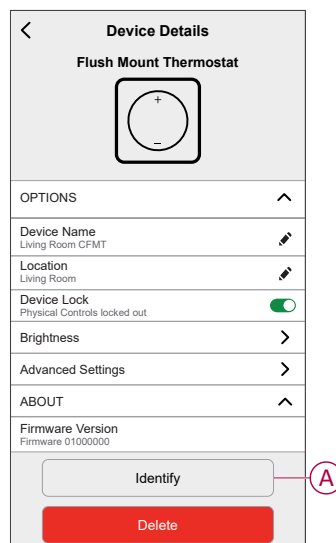
Switch the toggle to enable open window detection.

Identifying the device

Using the Wiser Home app, you can identify the thermostat from the other available devices in the room.

1. On the Home page, tap .
2. Tap **Devices** >  > **Identify (A)**.

NOTE: The thermostat LEDs on the dot-matrix display flash white while the wireless connectivity LED flashes green at the same until you tap **Ok**.



Using the device

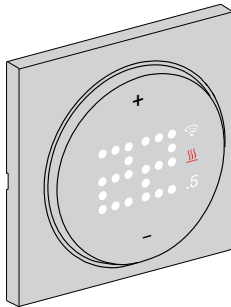
Setting the room temperature manually

The room temperature can be increased/decreased manually by using touch button on the thermostat.

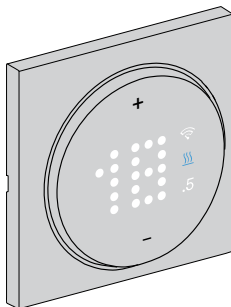
Prerequisite: Select the Preset, page 8.

- In the thermostat, press “+” touch button to increase the temperature.
- In the thermostat, press “-” touch button to decrease the temperature.

NOTE: When the system is in heating mode and the setpoint is higher than the current room temperature then the demand LED is lit **Red** to show the heating mode is active.




NOTE: When the system is in cooling mode and the setpoint is lower than the current room temperature then the demand LED is lit **Blue** to show cooling mode is active.





Setting the room temperature using the app


Using the Wiser Home app, you can adjust the room temperature for heating and cooling.

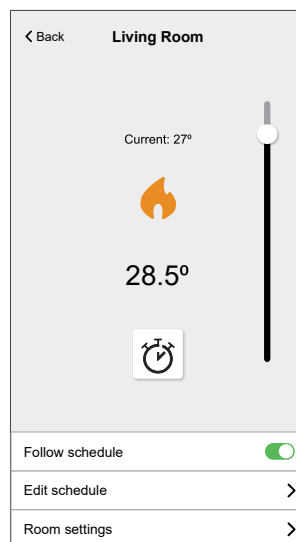
Heating

1. On the Home screen, tap **All** or room tab.
2. To select a thermostat, tap .
3. Use the slider control and set the room temperature for heating.


NOTE:

- The  indicates that the room temperature is below the desired temperature (set point), so the heating is on.
- The  indicates that the room temperature is above the desired temperature (set point), so the heating is off.



TIP: Tapping  you can set the boost time and turns it off.




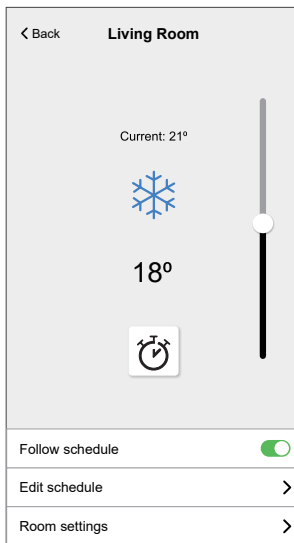
Cooling

1. On the Home screen, tap **All** or room tab.
2. To select a thermostat, tap .
3. Use the slider control and set the room temperature for cooling.

NOTE:

- The  indicates that the room temperature is higher than the desired temperature (set point), so the cooling is on.
- The  indicates that the room temperature is lower than desired temperature (set point), so the cooling is off.

TIP: You can initiate boost on & off anytime tapping .

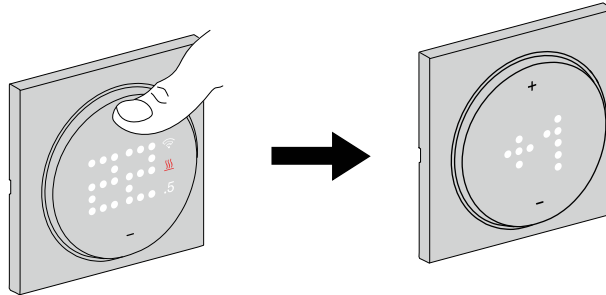


Setting boost mode manually

You can enable and disable boost mode manually.
When enabled the temperature increases by 2° C for temperature control modes and by +2 over the setpoint.

To enable boost mode:

1. Press the **+** button until the display flashes (press 2 times if the device is in standby mode, 1 time if the setpoint is already displayed).
2. Press and hold **+** for 1 s to enter boost menu.
+1 flashes on thermostat matrix.



NOTE: The thermostat will exit boost mode if there is no interaction within 5 seconds after pressing the button.

3. Press **+** to navigate between the boost hours from **+1** to **+3**.

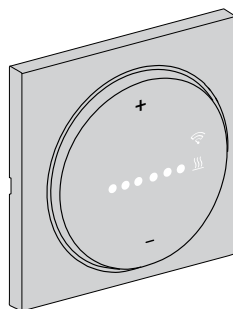
NOTE: When you press **+** touch button on the device, the boost mode selection cycle through **+1** → **+2** → **+3** → **--** (boost cancel) and again back to **+1**.

After selecting the boost hours, thermostat will save and exit boost mode if there is no interaction within 5 s.

For example: If current temperature is 12° C and you enable boost mode by selecting +3. The boost mode will set the setpoint temperature to 14° C for next 3 hour. After 3 hour setpoint returns to previous scheduled event or setpoint.

To disable boost mode:

1. Press and hold **+** for 1 s to enter boost menu.
+1 flashes on thermostat matrix.
2. Press **+** button for thermostat to display **--** (boost cancel).



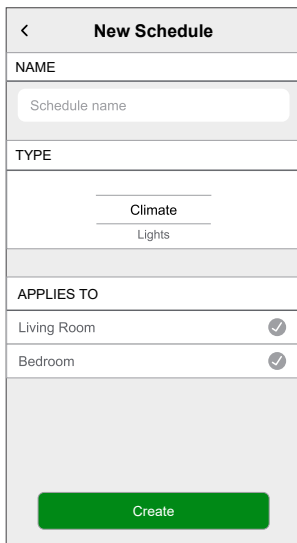
After selecting the boost cancel, thermostat will save and exit boost mode if there is no interaction within 5 s.


Creating a Schedule/Event

The device can be fully controlled and triggered by a schedule. Once the schedule is set, your system will follow the active schedule. You can create or modify the schedules at any time.


To create the schedule/event:

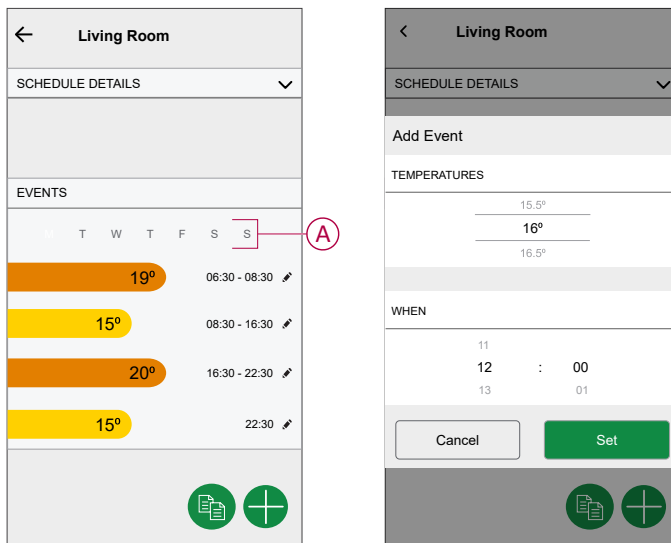
1. On the Home page, tap .
2. Tap on the **Schedules** tab > .
3. On the **New Schedule** page, enter the **Schedule name**, select **Type**, and select room.
4. Tap **Create**.



5. Select any day (A) and tap  for add event:
 - Select temperature (for example 16 °C).
 - Set time (for example 12:00).

NOTE: A maximum of 8 events can be created per day.



You can tap  to copy the schedule from one day to other days or copy the entire schedule to a new schedule or to an existing one.

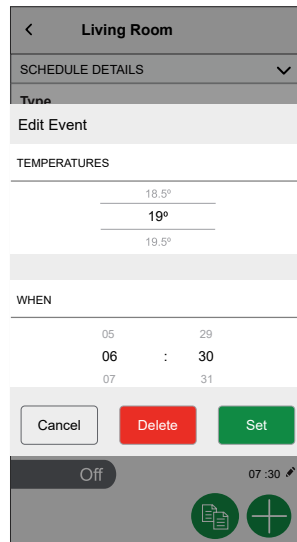


6. Tap **Set**.

Editing Schedule/Event

To edit the schedule:


1. On the Home page, tap .
2. Tap **Schedules** tab and select the Schedule that you want to modify.
3. Tap **SCHEDULE DETAILS** to do any of the following:
 - To rename the device
 - To change the device location
 - To delete Schedule
4. To edit the **EVENTS**, select a day, and tap  to change the time and temperature.




Creating a Moment

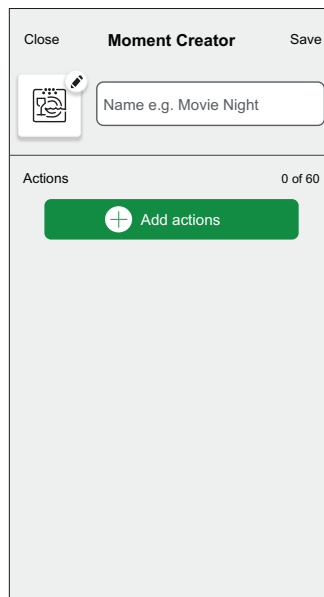
A Moment allows you to group multiple actions that are usually done together. Using the Wiser app, you can create moments based on your needs (such as movie night).

To create a moment:

1. On the Home page, tap .
2. Go to **Moments** > **+** to create a moment.
3. On the **Moment creator** page, enter the Moment name (for example, Movie night).

TIP: You can choose the cover image that represents your Moment by tapping .

4. Tap **Add actions** and select the device that you want to include in a Moment.



5. Tap **Done** > **Save**.

NOTE: Maximum of 60 actions can be added in a moment.

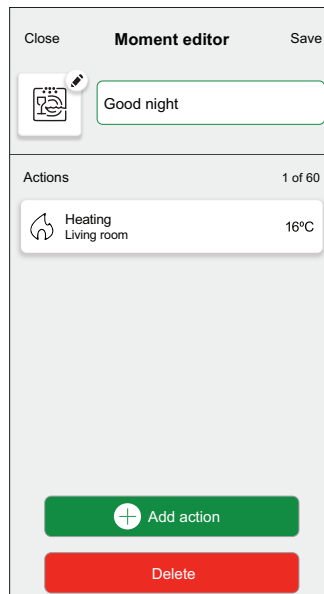
6. Tap **Save**.

TIP: You can view saved moment on the Home page.

Editing a Moment

Using the Wisser Home app, you can edit the existing Moment, and you can change the thermostat settings.

1. On the **Automation** page, tap **Moments** tab.
2. Select the moment that you want to modify.
3. On the Moment editor page, you can do the following:
 - Rename a moment
 - Delete a moment
 - Add actions
 - Change the device settings




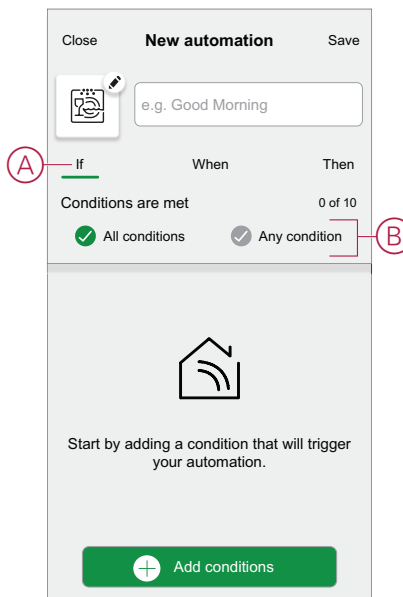
Creating an automation

An automation allows you to group multiple actions that are usually done together, triggered automatically or at scheduled times. By using the Wiser app, you can create automations based on your needs.

NOTE: To create and save automation, at least one condition and action must be added.

To create an automation:

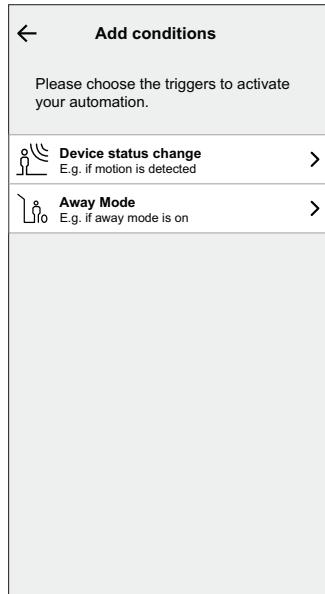
1. On the **Home** page, tap .
2. Go to **Automation** > **+** to create an automation.
3. Tap **If** (A) and select any of the following conditions to meet (B):
 - **All conditions:** This triggers an action only when all conditions are met.
 - **Any condition:** This triggers an action when at least one condition is met.




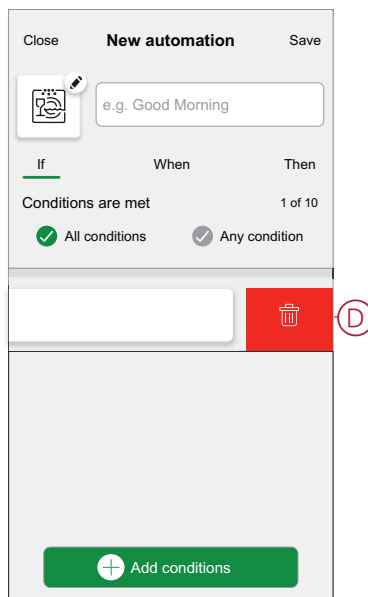
4. To add condition, tap **Add conditions** and select any of the following:

- **Device status change** (Select the device)
- **Away Mode** (Enable or Disable)

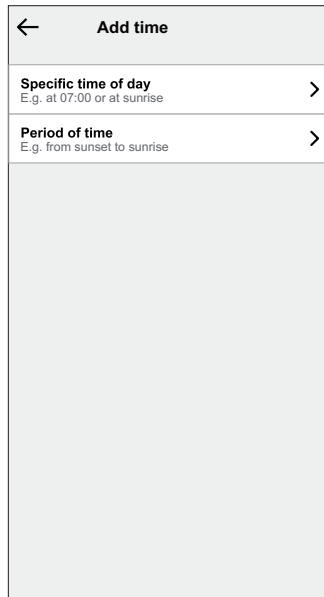
NOTE: Max. of 10 conditions can be added.




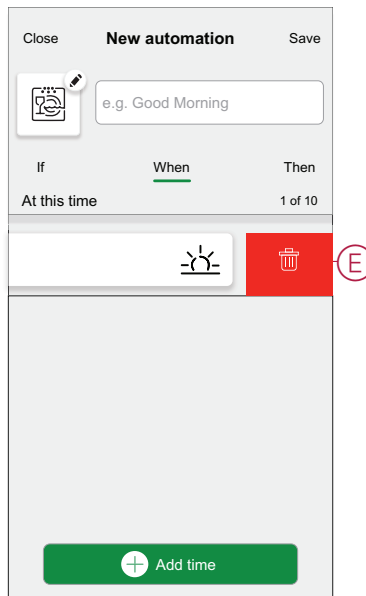
NOTE: To remove an added condition, swipe left and tap  (D).



5. To set a specific time for your automation, tap **When** > **Add time** and select any of the following:
- **Specific time of the day: Sunrise, Sunset, Custom**
 - **Period of time: Daytime, Nighttime, custom**



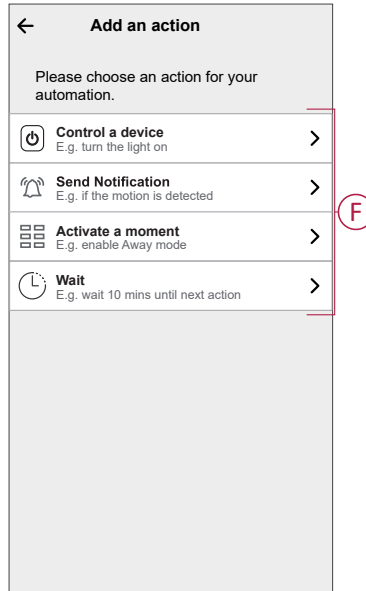
NOTE: To remove a specific time, swipe left and tap  (E).




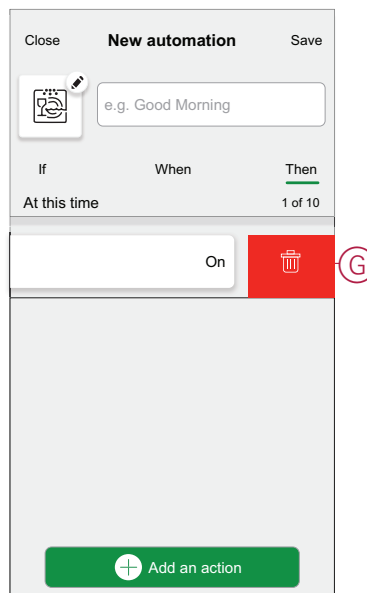
6. To add an action, tap **Then** > **Add an action** and select any of the following (F):

NOTE: Max.of 10 actions can be added.


- **Control a device:** Select a devices that you want to trigger.
- **Send notification:** Turn on the notification for the automation.
- **Activate a moment:** Select the moment that you want to trigger.
- **Wait:** This option allows you to add a delay in an automation sequence. You can set the wait time in increments of 1 hour and 1 minute, up to a maximum of 24 hours. This feature is useful for delaying actions within an automation.

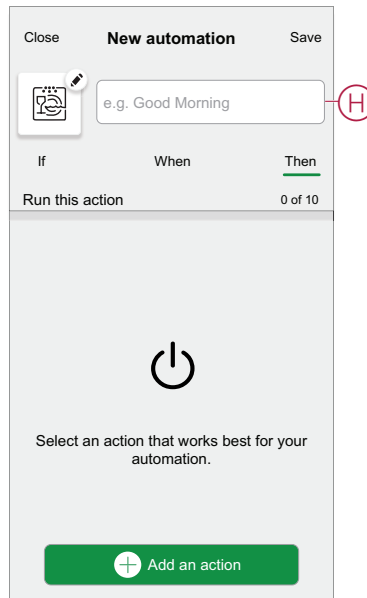



NOTE: To remove an action, swipe left on the action and tap  (G).

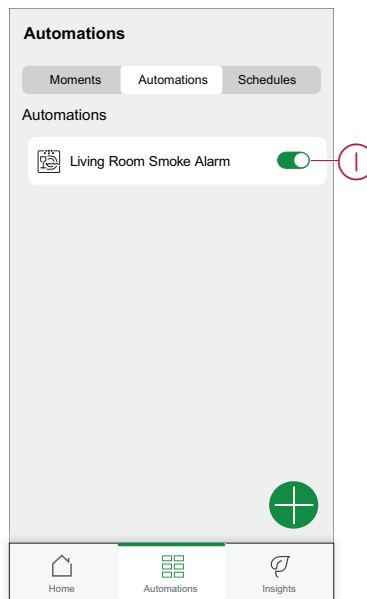


7. Enter the automation name (H) and tap **Save**.


You can choose the icon from the list that best represents your automation by tapping .





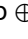
Once the automation is saved, it is visible on the **Automation** tab. Using the  (I) you can enable and disable the automation.

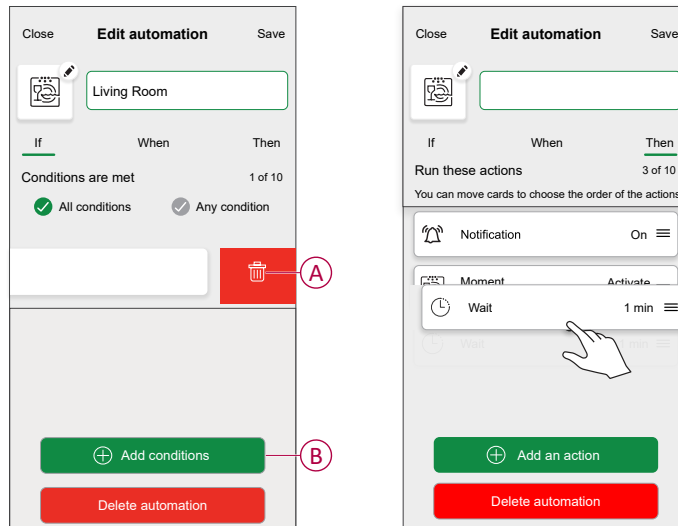


Editing an automation

1. On the **Home** page, tap **Automations** .
2. Go to **Automation**, tap the automation you want to edit.


3. On the **Edit automation** page, you can perform following changes:

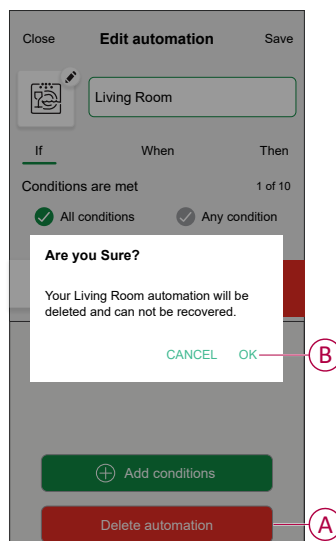
- Change the icon .
- Rename the automation.
- Tap each condition to change the settings.
 - To remove a condition, slide the condition towards left and then tap  (A) to delete it.
 - Tap  **Add conditions** (B) to add new condition.
- To change the order of actions, tap the **Then** option, and hold an action then drag and drop to the desired position.



4. Tap **Save** to save the changes.

Deleting an automation

1. On the **Home** page, tap **Automations** .
2. Go to **Automation**, tap the automation you want to delete.
3. On the **Edit automation** page, tap **Delete automation** (A) and read the confirmation message and then tap **OK** (B).

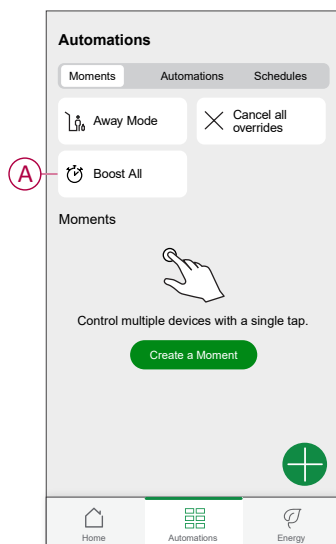


Built in Automation

There are three built in Automation such as Boost All, Cancel all overrides and Away mode.

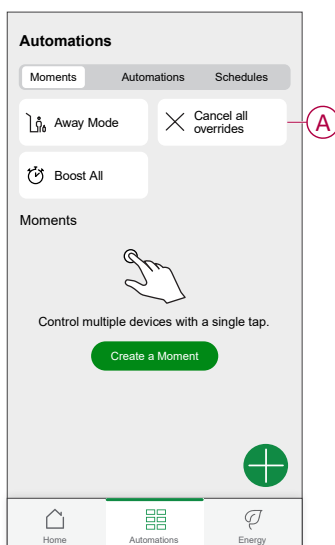
Boost All

You can apply a boost of +2 °C for 1 hour to every room in the system. It won't affect hot water in any way. As this is a "one-time action", you can find Boost All (A) in the "Automation" menu by clicking the "Automation" tab at the bottom of the Home page.



Cancel all overrides

The Cancel all overrides (A) will put all the heating back under 'system control' meaning that if you've selected Boost All or even if you've boosted or manually overridden a room setpoint individually, this will cancel the override and put all the rooms back to their scheduled set points. You can find it in the "Automation" menu by tapping the "Automation" tab at the bottom of the Home page.



Away Mode

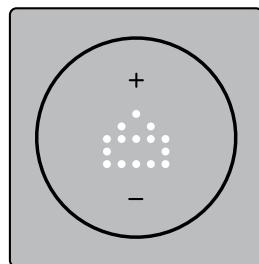
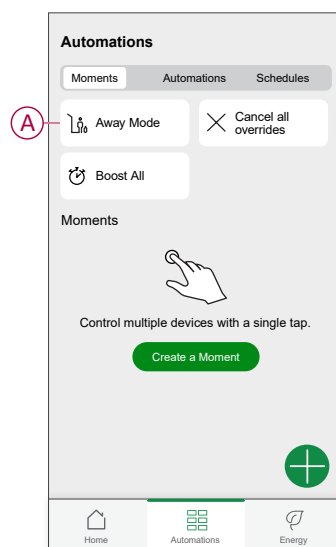
When Away Mode (A) is activated, all rooms will be set to the Away temperature (default 16 °C). It will show a checkmark in the “Automation” page when active. You can find it in the “Automation” menu by tapping the “Automation” tab at the bottom of the Home page.

When Away mode is active, only rooms that have set point temperatures higher than the Away mode temperature will be affected. For example, if a given room is set to 5 °C, Away mode will not force it to the Away temperature.

While Away Mode overrides Boost and rooms that are and aren't following a schedule, it is still possible to manually change the set-point temperature and boost individual rooms after activating Away Mode. It is also possible to boost or manually turn the hot water ON.

All rooms and hot water will display their Away mode values. The hot water will be turned OFF if you have activated this option on the Away Mode screen.

NOTE: The current temperature will not be displayed when away mode is activated.



Voice control

Using Amazon Alexa® or Google Home, you can control the thermostat with your voice.

Google Home

Google Home is a brand of smart speakers that works like Alexa. You can use Google Assistant to request information or perform an action using a variety of commands.”

Common Wiser commands for Google Home:

- Inquiry: “OK, Google, is the hot water on?”
- Hot Water Command: “OK, Google, turn on/off the hot water.
- Room Temperature: “OK, Google, how warm is (room name)?”
- Set Temperature: “OK, Google, set (room name) to XX degrees.”
- Increase Temperature: “OK, Google, increase the setpoint by XX degrees.”
- Set Temperature: “OK, Google, set (room name) to XX degree.”

Changes made with Google Home

All changes are made using a voice command related to the thermostat, valid for one hour or until the next scheduled event. The user cannot change this action. This also applies to boosts initiated from the radiator thermostat.

Amazon Alexa™

Amazon Alexa™ (Alexa) is an intelligent personal assistant developed by Amazon™, and is capable of voice interaction.



Common Wiser commands for Alexa

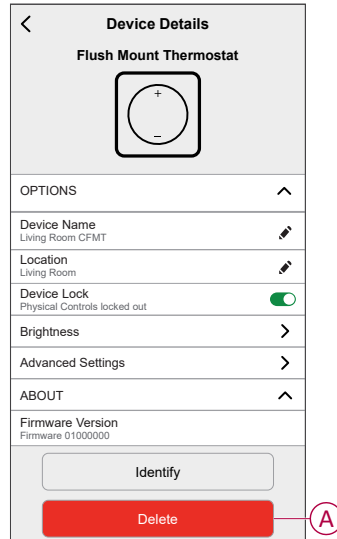
- Discover Devices: “Alexa, discover devices”
- Reduce Temperature: “Alexa, decrease the temperature upstairs by 4 degrees”
- Increase Temperature: “Alexa, increase the temperature upstairs by 3 degrees”
- Set Temperature: “Alexa, set the upstairs to 20 degrees”
- Get Temperature: “Alexa, what is the upstairs temperature?”
- Get the Set Point: “Alexa, what is the upstairs set to?”

Removing the device

Using the Wiser Home app, you can remove the thermostat from the Wiser system.

To remove the thermostat from the Wiser system:

1. On the Home page, tap .
2. Tap **Devices** >  > **Delete (A)**.



3. Read the confirmation message and tap **Ok** to remove the thermostat from the Wiser system.

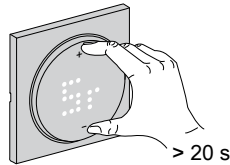
NOTE: By removing the thermostat, you will reset the thermostat. If you still have a problem with the reset, then refer to [resetting the device](#), page 41.

Resetting the device

You can manually reset the thermostat to factory settings or soft reset.

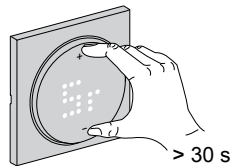
Soft reset

1. Press and hold **+** and **-** touch button simultaneously for **> 20 s**.
The thermostat displays **"Sr"**, indicating soft reset, and it is selected when the button is released.
The **'Sr'** will flash to confirm the soft reset.



NOTE: In case you keep pressing touch button for 25 s then the thermostat will reset to the factory default.

NOTE: To cancel the soft reset keep press and hold **+** and **-** touch button simultaneously for **> 30 s**. This reverts the thermostat's UI back to its previous state before the touch button is pressed, with no change in a functional state.

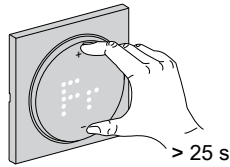


A soft reset will:

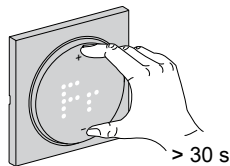
- Delete all Zigbee connection details.
- Revert to the default setpoint in manual control.
- Maintain all Factory settings e.g. MAC address.
- Maintain the installer configuration of the device to ensure proper functioning until and after rejoining/re-registration.

Factory reset

1. Press and hold + and – touch button simultaneously for > 25 s.
The thermostat displays “Fr”, indicating factory reset, and it is selected when the button is released.
The 'Fr' will flash to confirm the factory reset.



NOTE: To cancel the factory reset keep pressing + and – touch button simultaneously for > 30 s. This reverts the thermostat's UI back to its previous state before the touch button is pressed, with no change in a functional state.



NOTE: When the touch button is released, the "Fr" flashes on the matrix display, and the thermostat resets to factory defaults and after 5 s it returns to preset, page 8.

Resetting to the factory state will:

- Delete all Zigbee connection details.
- Delete all configuration data.
- Revert to the default setpoint in manual control.
- Maintain all Factory settings e.g. MAC address.

Cleaning

The external housing should be kept clean. Wipe the surface with a damp cloth.

NOTICE

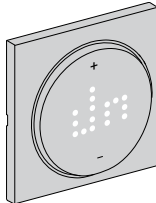




EQUIPMENT CLEANING INSTRUCTIONS

Do not use any cleaning agent, especially alcohol.

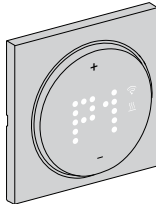
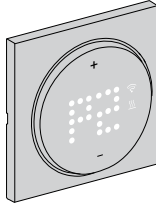
Failure to follow these instructions can result in equipment damage.

LED Indications

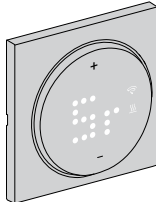
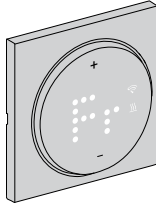
Pairing the device

Status	User Interaction	Description
Pairing in progress		The thermostat matrix display flashes "Jn" to indicate joining is initiated when the thermostat + and - touch button simultaneously and held for > 3 s.
Successful joining network		The thermostat matrix display flashes a green  LED when the thermostat successfully joins a network.
Fails to join the network		The thermostat matrix display flashes a red  LED when the thermostat fails to join the network.

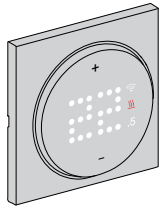
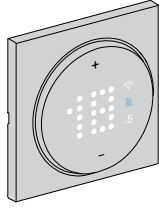
Presetting the device

Status	User Interaction	Description
Enter preset selection		The thermostat matrix display flashes "P1" when the thermostat is first powered on or after a factory reset to indicate preset "P1" is selected.
Modify preset selection		The thermostat matrix display flashes "P2" or "P3" when the thermostat touch button is pressed. Note: When + touch button is pressed, the preset increases by one; similarly, the preset decreases by one when - touch button is pressed. For more information, refer to the section Presetting the device, page 8.

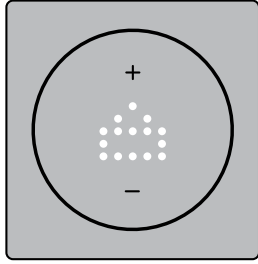
Resetting the device

Status	User Interaction	Description
Soft reset		"Sr" flashes on thermostat LED matrix during soft rest process. For more information, refer to the section resetting the device, page 41.
Factory reset		"Fr" flashes on thermostat LED matrix during factory rest process. For more information, refer to the section resetting the device, page 41.

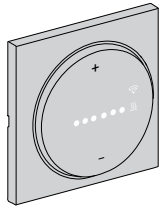
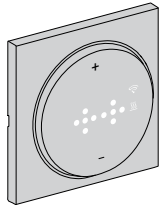
Showing demand - temperature control modes

Status	User Interaction	Description
Heating demand		The matrix display a solid red LED to indicate the thermostat is heating when the setpoint is higher than the current room temperature. NOTE: Heating input has been activated.
Cooling demand		The matrix display a solid blue LED to indicate the thermostat is cooling when the setpoint is lower than the current room temperature. NOTE: Cooling input has been activated.

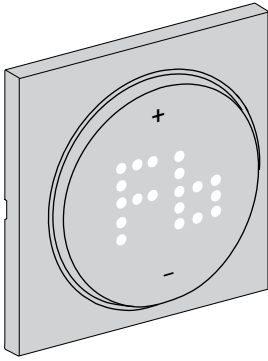
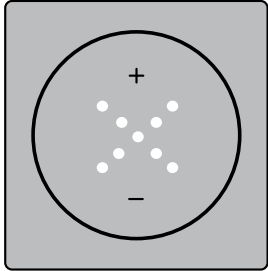
Away mode

Status	User Interaction	Description
Away mode is set in Wiser Home app.		A dot-matrix display glows, indicates that the thermostat is in away mode. Refer Away mode, page 38.

Temperature display

Status	User Interaction	Description
Temperature below minimum display value OR Temperature reading error.		Note: The thermostat matrix displays temperature limits -9 °C to 99 °C. The thermostat matrix display flashes "--" When the temperature is below -9 degrees. OR The thermostat matrix display flashes "--" when the thermostat cannot determine the temperature due to an error.
Temperature above maximum display value		Note: The thermostat matrix displays temperature limits -9 °C to 99 °C. The thermostat matrix display flashes "+ +" when the temperature is above 99 degrees.

Troubleshooting

Symptom	Possible cause	Solution
Thermostat temperature measurement is not accurate.	Check the installation location for possible air flow in conduit box or installation tube.	Make sure there is proper sealing of the conduit box or installation tube, to prevent airflow from affecting sensor performance.
The thermostat has gone offline.	<ul style="list-style-type: none"> The thermostat is not On. The thermostat is no longer in signal range of the Hub. 	<ul style="list-style-type: none"> Turn the thermostat On and Off. Move the Wiser Hub closer to the thermostat. Use Wiser Smart plug to increase the range.
Unable to join to the Wiser Hub (blinking red LED)	<p>Poor signal between the Wiser Hub and thermostat.</p> <p>The devices have no power (Thermostat/ Wiser Hub/Wi-Fi® network).</p>	<ul style="list-style-type: none"> Rejoin the thermostat in the app. Turn on the devices' power (Thermostat/ Wiser Hub/Wi-Fi® network).
Status	User Interaction	Description
Unable to set the room temperature by the app.	Wiser Hub signal is weak or not connected to the Wi-Fi® network.	Check for a Wi-Fi® signal.
Find and Bind		When the user press and holds the rotary push-button for >8s, "Fb" LED is displayed on the thermostat matrix display. It is a Zigbee function, can be ignored.
"X" mark is displayed on LED matrix	<p>Device is lock and LED matrix displays "X"</p> 	Press + and - touch button simultaneously for > 5 s to exit the menu.

Technical Data

Nominal voltage:	AC 230 V ~, 50 Hz
Nominal power:	2 A
Standby:	max 0.4 W
Connecting terminals:	Terminals for max. 2.5 mm ² , 0.5 Nm
Neutral conductor:	Required
Ambient temperature:	0 to 45 °C
Relative humidity:	max. 90% non-condensing
Temperature accuracy:	max. ±0.5 °C (across the range of 4 to 30 °C)
Temperature measurement resolution:	0.5 °C
Display:	7x5 dot matrix, 3 additional LEDs
Operating frequency:	2.405 GHz to 2.48 GHz
Max. radio-frequency power transmitted:	< 10 mW
Communication protocol:	Zigbee 3.0 certified
Protection Class:	II
Working voltage:	230 V
Over-voltage category:	III
Rated impulse voltage:	4 kV
Pollution degree:	2
CTI rating of insulation components:	175 V
Material group:	IIIa (based on CTI value)
Disconnection type:	1.B

Compliance

Compliance information for Green Premium products

Find and download comprehensive information about Green Premium products, including RoHS compliance and REACH declarations as well as Product Environmental Profile (PEP) and End-of-Life instructions (EOL).

<https://checkaproduct.se.com/>



General information about Green Premium products

Click the link below to read about Schneider Electric's Green Premium product strategy.

<https://www.schneider-electric.com/en/work/support/green-premium/>



EU Declaration of Conformity

Hereby, Schneider Electric Industries, declares that this product is in compliance with the essential requirements and other relevant provisions of RADIO DIRECTIVE 2014/53/EU. Declaration of conformity can be downloaded on se.com/docs.

Trademarks

This guide makes reference to system and brand names that are trademarks of their relevant owners.

- Zigbee® is a registered trademark of the Connectivity Standards Alliance.
- Apple® and App Store® are brand names or registered trademarks of Apple Inc.
- Google Play™ Store and Android™ are brand names or registered trademarks of Google Inc.
- Wi-Fi® is a registered trademark of Wi-Fi Alliance®.
- Wiser™ is a trademark and the property of Schneider Electric, its subsidiaries and affiliated companies.
- Amazon Alexa™ is a trademark of AMAZON TECHNOLOGIES, INC.
- Google Home™ is a trademark of Google INC.

Other brands and registered trademarks are the property of their respective owners.

Schneider Electric
35 rue Joseph Monier
92500 Rueil Malmaison
France

+ 33 (0) 1 41 29 70 00

www.se.com

As standards, specifications, and design change from time to time, please ask for confirmation of the information given in this publication.

© 2023 – 2025 Schneider Electric. All rights reserved.

DUG_Odace - Thermostat 2 A_WH-04