

# System M and System D - Connected Single Socket Outlet 16 A

## Wiser Home Device user guide

Information about features and functionality of the device.

02/2025

**merten**<sup>TM</sup>



# Legal Information

The information provided in this document contains general descriptions, technical characteristics and/or recommendations related to products/solutions.

This document is not intended as a substitute for a detailed study or operational and site-specific development or schematic plan. It is not to be used for determining suitability or reliability of the products/solutions for specific user applications. It is the duty of any such user to perform or have any professional expert of its choice (integrator, specifier or the like) perform the appropriate and comprehensive risk analysis, evaluation and testing of the products/solutions with respect to the relevant specific application or use thereof.

The Schneider Electric brand and any trademarks of Schneider Electric SE and its subsidiaries referred to in this document are the property of Schneider Electric SE or its subsidiaries. All other brands may be trademarks of their respective owner.

This document and its content are protected under applicable copyright laws and provided for informative use only. No part of this document may be reproduced or transmitted in any form or by any means (electronic, mechanical, photocopying, recording, or otherwise), for any purpose, without the prior written permission of Schneider Electric.

Schneider Electric does not grant any right or license for commercial use of the document or its content, except for a non-exclusive and personal license to consult it on an "as is" basis.

Schneider Electric reserves the right to make changes or updates with respect to or in the content of this document or the format thereof, at any time without notice.

**To the extent permitted by applicable law, no responsibility or liability is assumed by Schneider Electric and its subsidiaries for any errors or omissions in the informational content of this document, as well as any non-intended use or misuse of the content thereof.**

---

# Table of Contents

Safety Information.....	4
System M and System D - Connected Single Socket Outlet 16	
A .....	5
For your safety .....	5
About the device.....	6
Installing the device .....	6
Quick Home Connect.....	8
Pairing Wireless Switch with Single Socket OutletSocket Outlet .....	9
Operating a Socket Outlet.....	9
Resetting the Device in Quick Home Connect .....	10
LED Indications in Quick Home Connect.....	10
Troubleshooting in Quick Home Connect .....	10
Pairing the device with Wiser Hub .....	12
Configuring the device .....	14
Renaming the device .....	14
Changing the icon .....	15
Setting the device location .....	16
Identifying the device .....	17
Anti-Tripping Management.....	18
Using the device.....	23
Switching operation manually .....	23
Switching operation using the app .....	23
Setting up a schedule.....	24
Monitoring energy consumption .....	25
Moments.....	26
Automation.....	30
Removing the device from the system .....	37
Resetting the device .....	38
LED indications .....	39
Troubleshooting .....	40
Technical Data .....	41
Compliance .....	42
Product Environmental Data.....	42
Declaration of Conformity.....	43
Trademarks.....	43

# Safety Information

## Important Information

Read these instructions carefully and look at the equipment to become familiar with the device before trying to install, operate, service, or maintain it. The following special messages may appear throughout this manual or on the equipment to warn of potential hazards or to call attention to information that clarifies or simplifies a procedure.



The addition of either symbol to a “Danger” or “Warning” safety label indicates that an electrical hazard exists which will result in personal injury if the instructions are not followed.



This is the safety alert symbol. It is used to alert you to potential personal injury hazards. Obey all safety messages that accompany this symbol to avoid possible injury or death.

### **DANGER**

**DANGER** indicates a hazardous situation which, if not avoided, **will result in** death or serious injury.

**Failure to follow these instructions will result in death or serious injury.**

### **WARNING**

**WARNING** indicates a hazardous situation which, if not avoided, **could result in** death or serious injury.

### **CAUTION**

**CAUTION** indicates a hazardous situation which, if not avoided, **could result in** minor or moderate injury.

### **NOTICE**

NOTICE is used to address practices not related to physical injury.

## System M and System D - Connected Single Socket Outlet 16 A



MEG2380-0xxx (System M)



MEG2380-60xx (System Design)

### For your safety

#### **⚠ DANGER**

##### **HAZARD OF ELECTRIC SHOCK, EXPLOSION, OR ARC FLASH**

Safe electrical installation must be carried out only by skilled professionals. Skilled professionals must prove profound knowledge in the following areas:

- Connecting to installation networks.
- Connecting several electrical devices.
- Laying electric cables.
- Safety standards, local wiring rules and regulations.

**Failure to follow these instructions will result in death or serious injury.**

#### **Related Topics**

- System M and System D - Connected Single Socket Outlet 16 A (Parent Topic)

## About the device

The Connected Single Outlet 16 A (hereinafter referred to as a **Socket outlet**) is a connected electrical outlet designed to manage and control electrical devices in a convenient and efficient manner.

The Socket outlet is equipped with:

- **Temperature protection mechanism:** When the Socket outlet is used with a high load over a long time, the mechanism can switch off the Socket outlet, ensuring overheating protection.
- **Overload protection mechanism:** When the Socket outlet is used with a high load (~18A or higher), the mechanism can switch off the Socket outlet, ensuring overload protection.

### Features of a Socket outlet:

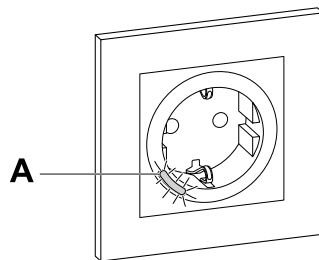
- **Remote access:** You can switch On/Off the Socket outlet using the app or through a connected wireless switch or through voice control (Google Home, Amazon Alexa, Siri) in addition to using the On/Off button on the device itself.
- **Power consumption:** You can monitor power (W) consumption using the app.
- **Easy installation:** The Socket Outlet fits in existing wall boxes (40 mm), no separate wall box requirement.
- **Easy scheduling:** You can create a schedule for the various device functions in an easy manner as per your specific requirements for comfort and convenience.
- **High safety:** The integrated overload and overheating protection ensures that the Socket outlet is safe at all times.

### NOTE:

- The device must not control safety-relevant applications
- Do not mix different load types in the controlled socket
- Do not use multi-sockets in the controlled socket
- Do not use for EV charging

## Diagram of operating element

A. Push button with status LED



### Related Topics

- System M and System D - Connected Single Socket Outlet 16 A (Parent Topic)

## Installing the device

Refer to the installation instruction supplied with this product.

### Related Topics

- System M and System D - Connected Single Socket Outlet 16 A (Parent Topic)

## Quick Home Connect

Quick Home Connect is a wireless connectivity solution for Zigbee devices without the need for a Hub/Gateway or smartphone application. Quick Home Connect is your starting point for wireless home automation. It performs functions like switching, dimming and shutter control using the Connected Wireless Switch (hereinafter referred to as Wireless switch) via a Zigbee network.

The **Wireless switch** is a battery-powered wireless push-button switch that is used to control Zigbee devices (such as dimmer, shutter, switch, and socket) within the same Zigbee network.

## Limitations

- Quick Home Connect serves only as a room control solution.
- With a 1-gang Wireless switch, you cannot mix lighting and shutter control. However, with a 2-gang Wireless switch, you can assign one gang for dimming/switching and the other for shutter control, or vice versa.
- This solution does not support remote control, smartphone app usage, or scheduling features.

## Related Topics

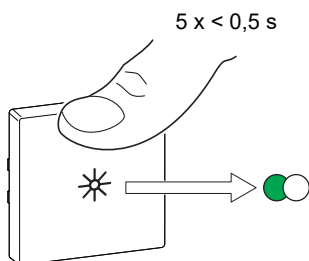
- System M and System D - Connected Single Socket Outlet 16 A (Parent Topic)
- Pairing Wireless Switch with Single Socket OutletSocket Outlet
- Operating a Socket Outlet
- Resetting the Device in Quick Home Connect
- LED Indications in Quick Home Connect
- Troubleshooting in Quick Home Connect



## Pairing Wireless Switch with Single Socket Outlet

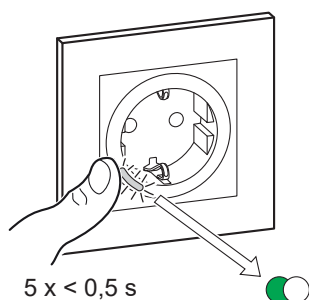
1. Short press the upper push button 5 times in quick succession on the Wireless switch.

The status LED blinks green.



2. Short press the push-button of the Socket Outlet 5 times in quick succession.

The status LED blinks green.



Upon successful pairing, the green LED on the Wireless switch and the Socket Outlet will stop blinking.

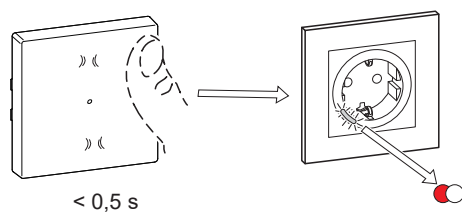
### Related Topics

- Quick Home Connect (Parent Topic)

## Operating a Socket Outlet

Short press the top or bottom of the Wireless switch (< 0,5 s) to turn ON/OFF the socket.

The LED blinks red indicating that the socket outlet is turned On.



### Related Topics

- Quick Home Connect (Parent Topic)

## Resetting the Device in Quick Home Connect

It is necessary to reset the devices in the following scenarios:

- Unpair the device in Quick Home Connect:
- Refer to
  - Resetting the Wireless switch
  - Resetting the Socket outlet

When reset is done successfully. The Wireless switch and device returns to factory default.



- Integrating into Wiser System
  - If you wish to integrate the devices into Wiser System, reset all the devices in Quick Home Connect and refer to pairing the device with Wiser Hub/Gateway.

### Related Topics

- Quick Home Connect (Parent Topic)

## LED Indications in Quick Home Connect

### Pairing the device in Quick Home Connect

User Action	LED Indication	Status
Press the push button 5 times in quick succession.	LED blinks green, once per second. 	Pairing mode is active for 60 seconds. When pairing is completed, LED stops blinking. 

### Related Topics

- Quick Home Connect (Parent Topic)

## Troubleshooting in Quick Home Connect

Symptom	Possible cause	Solution
LED displays amber on the device.	Pairing not completed and returned to factory default.	Pair the Wireless switch and the device again. Refer to <ul style="list-style-type: none"> <li>• Socket outlet, page 9</li> </ul>
Wireless switch not able to control the device reliably.	The Wireless switch and the device are too far away from each other.	Place the Wireless switch in a position closer to the device.
	The Wireless switch lost pairing.	Pair the device again. Refer to <ul style="list-style-type: none"> <li>• Socket outlet, page 9</li> </ul>
	The Wireless switch battery is discharged.	Replace the battery of the Wireless switch

Scenario	Procedure
Control multiple devices with one Wireless switch.	To control multiple devices with a single Wireless switch, start by pairing it with one device. Then, use the same Wireless switch to pair with additional devices. <b>NOTE:</b> You can pair up to 7 devices to a single Wireless switch.
1-gang FLS with devices (relay switch, dimmer, shutter control, or socket outlet).	Pair the Wireless switch with any of the devices (relay switch, dimmer, shutter control, or socket outlet).
2-gang FLS with devices (relay switch, dimmer, shutter control, or socket outlet).	Pair either left or right Wireless switch with any of the devices (relay switch, dimmer, shutter control, or socket outlet). You can also pair another rocker of the Wireless switch with another device.


### Related Topics

- [Quick Home Connect \(Parent Topic\)](#)

## Pairing the device with Wiser Hub

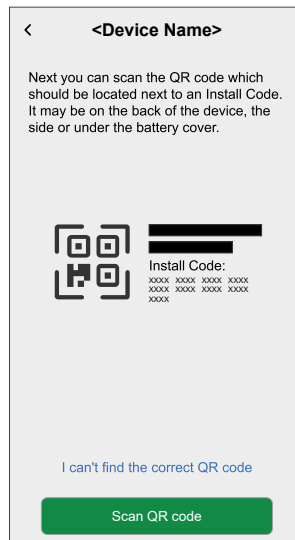
Using the Wiser Home app, pair your device with the **Wiser Hub** to access and control the device.

1. On the Home screen, tap .
2. Tap **Devices** >  > **Appliances** > **Connected Socket**.

**TIP:** You can also navigate by tapping **Control** >  > **Appliances** > **Connected Socket**.

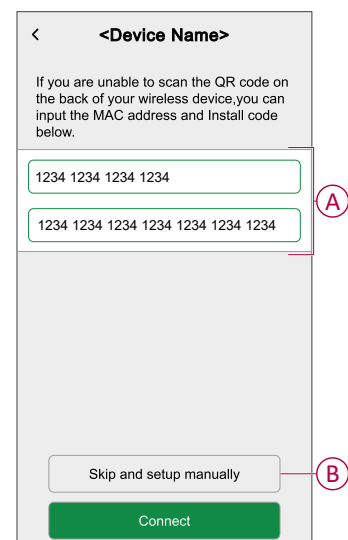
3. Tap **Scan QR code** and allow the Wiser Home app to access your camera. Then, scan the QR code located on the device.

**NOTE:** If you are unable to find the correct QR code, tap **I can't find the correct QR code** to pair the device manually and proceed to step 4.

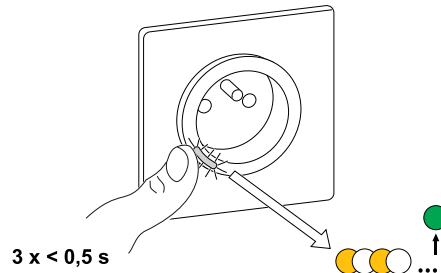


If the QR code is incorrect, a message **Incorrect QR code scanned** will appear. Tap **I can't scan the QR code** and choose one of the following options:

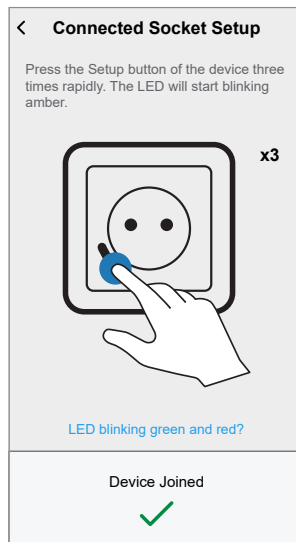
- **(A):** Enter the **Mac Address/EUI-64** and **Install Code**, then tap **Connect**. The app will verify if the Mac Address/EUI-64 and Install code are valid.
- **(B):** Tap this option if you are unable to find the Mac Address/EUI-64 and Install code.




4. Tap **Next**, short press the push button 3 times and make sure that the LED blinks amber.




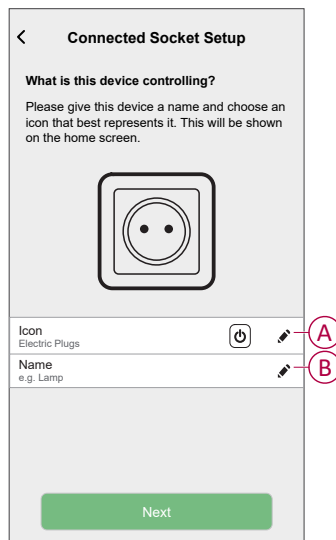
Wait for a few seconds until the LED turns green and the app confirms that the device is joined.



5. Once the device is joined, tap  (A) and select an icon suitable for your load and tap **Save**.

**NOTE:** Electric plug icon is assigned by default.

6. Tap  (B) to enter the name of the device.



7. Tap **Next** and assign the socket to a new room or an existing room and tap **Submit**.

**IMPORTANT:** The next screen shows the **Device Settings** page, where you have the option to configure the settings during the pairing process or at a later time. If you prefer to configure it later, tap **Submit**. For more information on device settings, refer to [Configuring the device](#), page 14 section.

### Related Topics

- [System M and System D - Connected Single Socket Outlet 16 A \(Parent Topic\)](#)

## Configuring the device

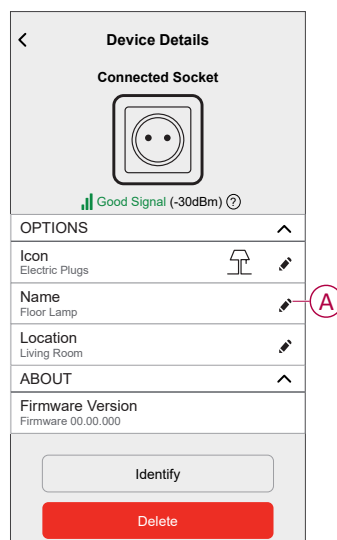
### Related Topics

- [System M and System D - Connected Single Socket Outlet 16 A \(Parent Topic\)](#)
- [Renaming the device](#)
- [Changing the icon](#)
- [Setting the device location](#)
- [Identifying the device](#)
- [Anti-Tripping Management](#)

## Renaming the device

Using the Wiser Home app, you can rename your Socket outlet.  
To rename the Socket outlet:

1. On the Home page, tap .
2. Tap **Devices > Connected Socket > Device Name (A)** to rename the Socket outlet.



### Related Topics

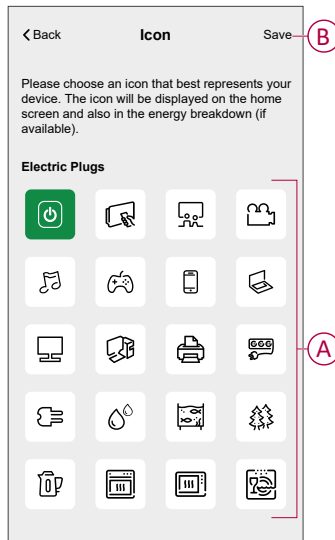
- [Configuring the device \(Parent Topic\)](#)

## Changing the icon

You can change the icon of the device.

1. On the Home screen, tap  > **Devices** > **Connected Socket**.
2. Tap  **Icon**, select an icon of your choice (A) and tap **Save** (B).

**IMPORTANT:** If you have installed Socket outlet and PowerTag, changing the icon to another category will delete all the historical data. Refer to Energy view of individual devices.





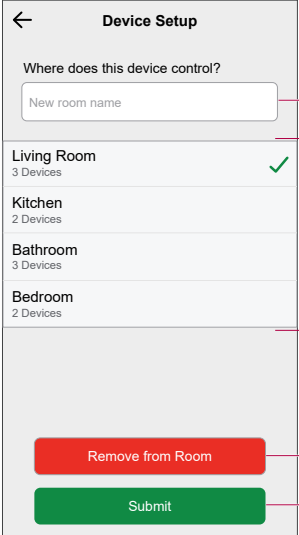
### Related Topics

- Configuring the device (Parent Topic)

## Setting the device location

Using the Wiser Home app, you can add your Wireless Switch to any room (such as bedroom, living room, dining room etc.).

1. On the **Home** screen, tap .
2. Tap **Devices**, select the device from the list for which you wish to change the location.
3. Tap **Location**  to open setup screen.
4. On the **Device Setup** screen, you can enter **New room name** (A) or select an existing room from the list (B).



**TIP:** If the device is already assigned, you can remove it from the existing room. Tap **Remove from Room** (C).

5. Once changes are done, tap **Submit** (D).

### Related Topics

- Configuring the device (Parent Topic)



## Identifying the device

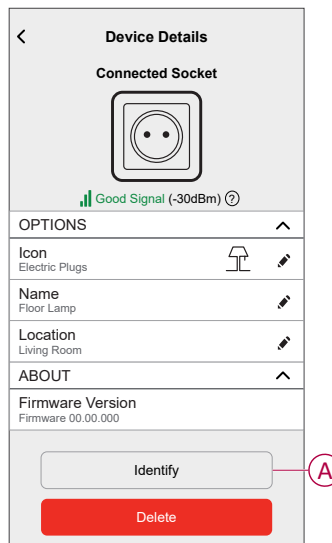
Using the Wiser Home app, you can identify a Socket outlet from the other available devices in the room.

To identify the Socket outlet:

1. On the Home page, tap .
2. Tap **Devices > Connected Socket > Identify (A)**.

**NOTE:**

- This feature flashes the Socket outlet LED, so you can identify the actual device. It may take up to a minute to start and flash the Socket outlet LED.
- The socket LED will continue to flash until you tap **OK**.



## Related Topics

- Configuring the device (Parent Topic)

## Anti-Tripping Management

The Anti-Tripping Management prevents the circuit breaker from tripping by switching off the load (e.g. Water Heater, Schneider Charge) or reducing the power of the load. This keeps the total consumption of the system under a defined limit. The limit value is set by your Contract limit, refer to Setting Tariff - . Devices that are eligible will be added automatically to the Anti-Tripping Management.

**IMPORTANT:** When a device is managed by the Anti-Tripping management, the Schedules, Moments and Automations for that device are not executed.

**NOTE:** Maximum of 8 devices can be added.

### Supported devices:

- Power Micromodule (Water Heater)
- EV Socket
- Smart Plug
- Smart Sockets
- EVlink Home Smart
- Schneider Charge

### Pre-requisite:

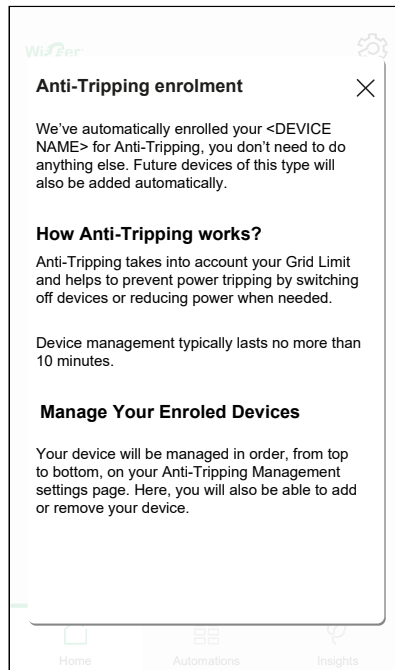
- Configure one of your PowerTag as Grid. Refer to Pairing main PowerTag.
- Set the Contract limit.  
A default contract limit is automatically set when pairing the main **PowerTag** as **Grid**. You can change the contract limit later if the Grid value set during the PowerTag installation does not match the tariff, refer to Setting - .
- Pair the supported devices. Refer to Pairing the device (based on what devices you have installed) - Power Micromodule, EV Socket, Smart Plug, Smart SocketEVlink Home Smart, Schneider Charge.


**IMPORTANT:** For pairing Wi-Fi® devices such as the Schneider Charge and EVlink Home Smart, make sure the device and the Hub are connected to the same Wi-Fi® network.

**NOTE:** For the Anti-tripping management of Schneider Charge and EVlink Home Smart using the Anti-tripping module, refer to the respective device user guide.

## Enabling Anti-Tripping Management


Once the prerequisites are completed, user gets notified that this feature is available. The **Anti-Tripping** screen appears on the **Home** screen.



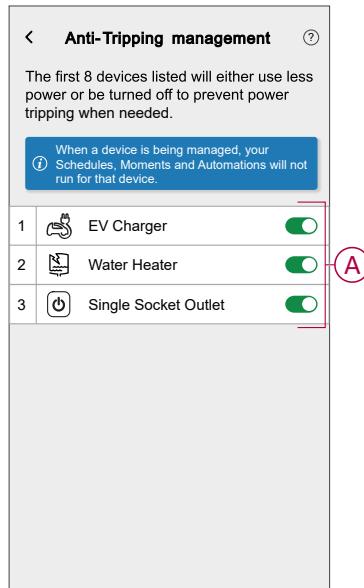
1. Read the feature update and swipe to navigate to next screen.
2. Tap  to close the overlay screen.
  - The supported devices will be enrolled automatically.

## Disabling Anti-Tripping Management

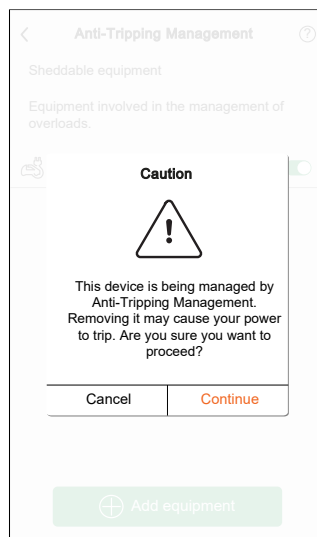
The Anti-Tripping Management feature for the supported devices can be deactivated at any time.

1. On the **Home** screen, tap  > **Energy Management > Anti-Tripping Management**.


2. Tap the toggle switch (A) for the devices you want to disable.



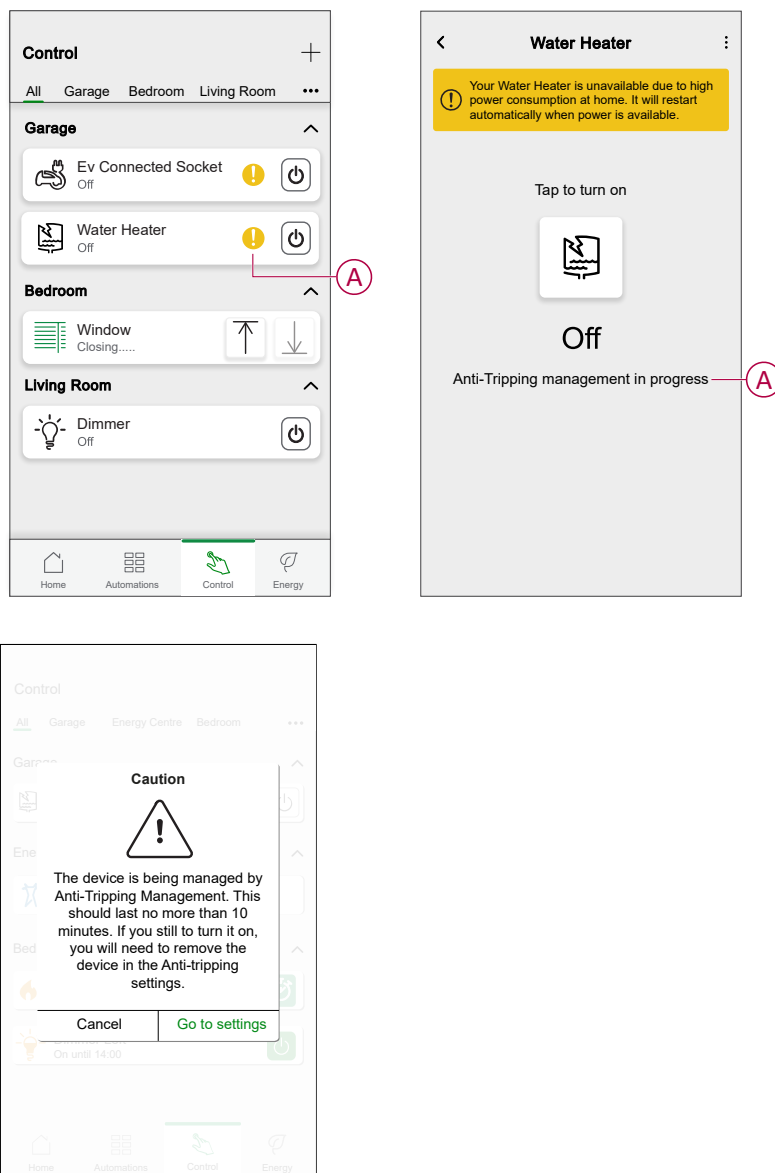
If the device is currently in use, a notification will prompt you that deactivating this feature may cause your power to trip. Tap **Continue** to disable.



## Activation status

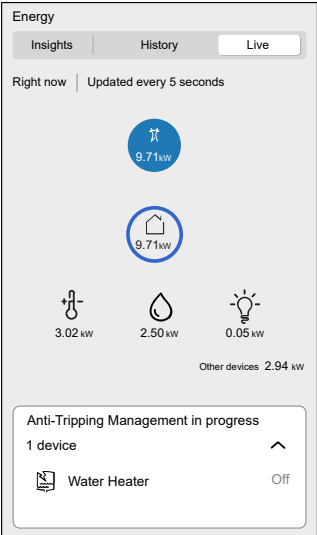
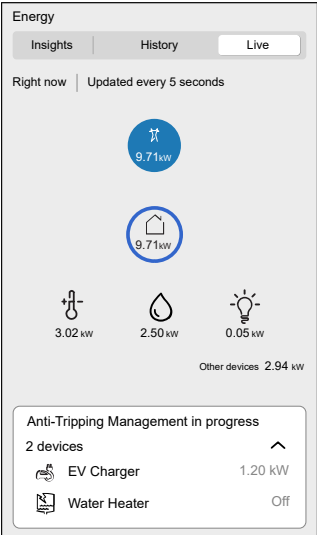
On the control tab and device control screen,  (A) denotes the Anti-Tripping management status.

- The devices will typically be off for upto 10 minutes. It will restart automatically when power is available.
- If you wish to turn on the device on the control tab or Device control screen, a **Caution** window is prompted that the device is being actively managed. Read the information and tap **Go to settings** and disable the toggle switch to remove the device from the Anti-Tripping Management.




## Live status

When the Anti-tripping feature is active for any device, the load shedding (A) is shown in the **Live** tab.



Troubleshooting

Error	Possible cause	Solution
<div> <b>Algorithm is currently unavailable</b> displayed in the <b>Live</b> tab.</div>	<ul style="list-style-type: none"><li>• The device is offline.</li><li>• System/Hub is unable to receive data from the device.</li><li>• Technical issue.</li></ul>	<p>Restart your Hub. If the problem still persists contact your installer or visit <a href="#">Help and Support</a> and select your country.</p>

### Related Topics

- Configuring the device (Parent Topic)

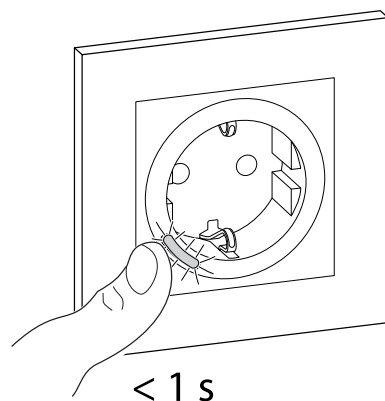
## Using the device

### Related Topics

- System M and System D - Connected Single Socket Outlet 16 A (Parent Topic)
- Switching operation manually
- Switching operation using the app
- Setting up a schedule
- Monitoring energy consumption
- Moments
- Automation

## Switching operation manually

You can turn on/off the Socket outlet manually by pressing the push-button. The LED turns red (default settings), which indicates the power output is on from the Socket Outlet.



### Related Topics


- Using the device (Parent Topic)

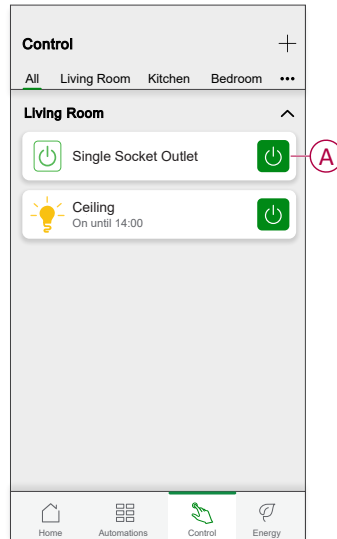
## Switching operation using the app

Using the Wiser Home app, you can turn on/off the Socket outlet remotely.

Turn on/off the Socket outlet:

1. Go to the Home page, tap **All** devices or a room tab where the Socket outlet is located.

2. Tap  (A) to turn on/off the Socket outlet.



## Related Topics

- Using the device (Parent Topic)

## Setting up a schedule

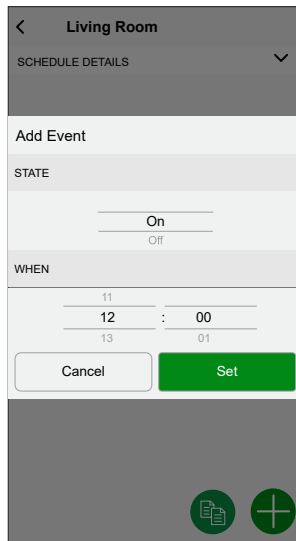
Using the Wiset Home app, you can create or assign a schedule to the Socket outlet.

1. On the Home screen, tap .
2. Go to **Schedule** tab, tap .
3. Enter the Schedule name and select **Appliances** from the **TYPE** menu.
4. Select the **Smart Socket Outlet** from the **APPLIES TO** menu and tap **Create**.

The next screen shows by default an Event for the week that can be modified.






5. Tap  to add an event such as **STATE** (on/off) and **WHEN** (sunrise/sunset or specific time range).



6. Tap **Set** to save the schedule.

**TIP:**

- You can add multiple schedules based on your requirement. Select days, tap , set on/off state and time.
- You can copy the existing schedule to another schedule or to the days of your choice. Tap .
  - Tap **Schedule** and select an existing schedule and tap **Copy**.
  - Tap **Day** and select the days you want to assign and tap **Copy**.
- On the top-right screen, tap  and select **Follow Schedule** toggle switch to turn On/Off the schedule.
- When the schedule begins, you can see the **until time** in the following screens:
  - Device Control Screen.
  - Control tab under the device name.
  - Favourite devices section on the home screen.

## Related Topics

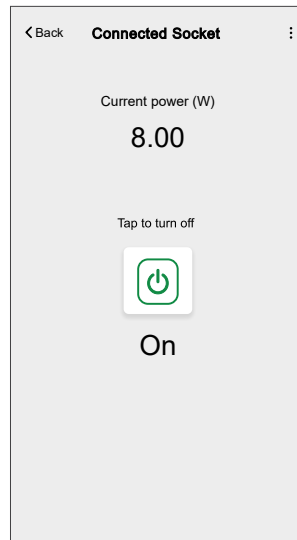
- Using the device (Parent Topic)

## Monitoring energy consumption

Using the Wiser app, you can monitor the energy consumption of the load connected to the device.

1. On the **Control** tab, tap **All > Connected Socket**.

2. When the socket outlet is turned on, the power consumption is displayed in watts (W).



**TIP:** The power consumption varies depending on the load connected to the socket outlet.

### Related Topics



- Using the device (Parent Topic)


## Moments

Moment allows you to group multiple actions that are usually performed together. By using the Wisier Home app, you can create moments based on your needs.

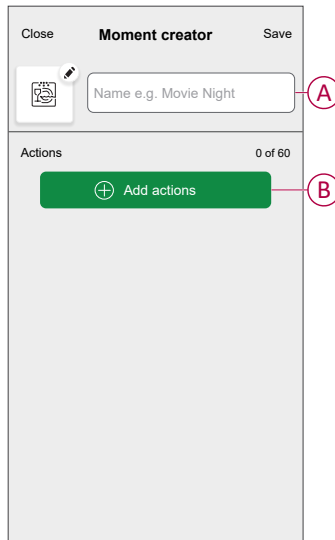
### Creating a moment

Moment allows you to group multiple actions that are usually performed together. By using the Wisier Home app, you can create moments based on your needs.

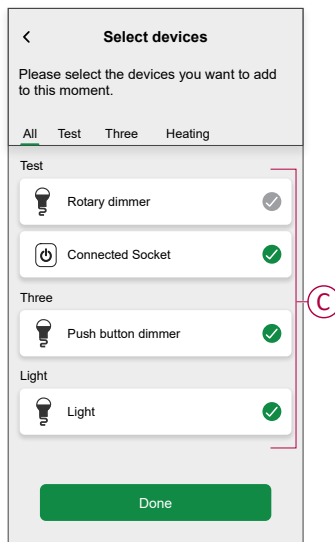
1. On the Home screen, tap .
2. Go to **Moments** >  to create a moment.
3. Enter the name of the moment (A).

**TIP:** You can choose the cover image that best represents your moment by tapping .

4. Tap **Add actions** (B) to select the list of devices.




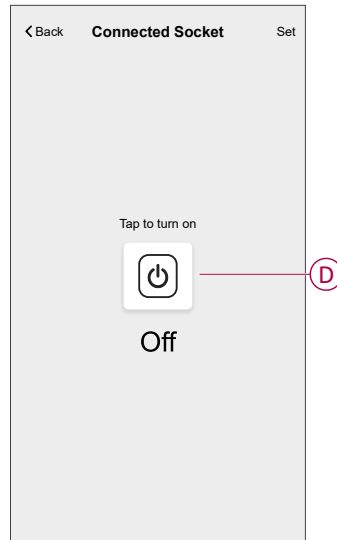
5. In the **Add actions** menu, you can select the devices (C).



6. Once all the device are selected, tap **Done**.

- On the **Moment creator** page, tap on the device to set the condition. For example, select connected socket.


– Tap  (D) to turn on.



When the desired condition is set, tap **Set**.

- Once all conditions are set, tap **Save**.

**TIP:**



- If you want to see the moments on the **Home** screen, go to **Home** >  > **Home Screen** > **Moments** and enable the **Moments** toggle switch.
- You can also rearrange the moments by tapping **Edit** from the Moments tab on the Home screen, or by tapping **Automation** > **Moments** > **Reorder**.

Once the moment is saved, it is visible on the **Moments** tab. You can tap on the moment to enable it.




## Related Topics

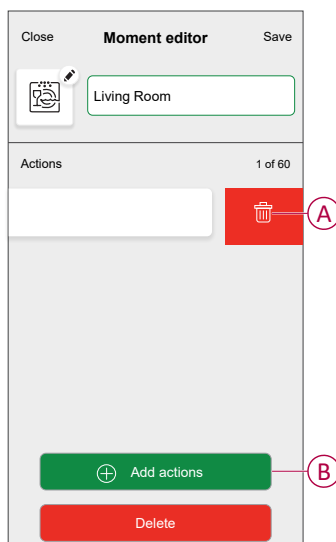
- Moments (Parent Topic)

## Editing a moment

- On the **Home** screen, tap **Automations** .
- Go to **Moments**, locate the moment you want to edit and tap .

3. On the **Moment editor** screen, you can perform following changes:

- Change the icon .
- Rename the moment.
- Tap each action to change the settings.
- To remove an action, slide the action to the left and then tap  (A) to delete it.
- Tap  **Add actions** (B) to add new action.





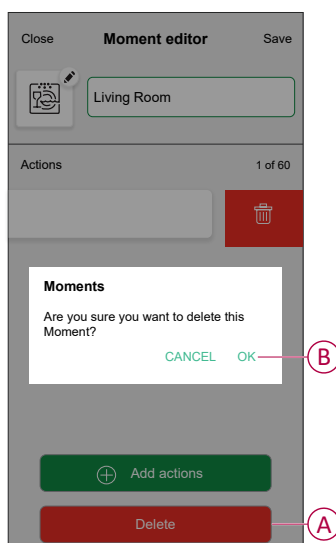
4. Tap **Save** to save the changes.

## Related Topics

- Moments (Parent Topic)

## Deleting a moment

1. On the **Home** screen, tap **Automations** .
2. Go to **Moments**, locate the moment you want to delete and tap .
3. On the **Moment editor** screen, tap **Delete** (A) and then tap **OK** (B).



## Related Topics

- Moments (Parent Topic)


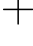
## Automation


An automation allows you to trigger an action automatically or at scheduled times when certain conditions are met. By using the Wiser Home app, you can create automations based on your needs. This example demonstrates how a device works when the condition is met.

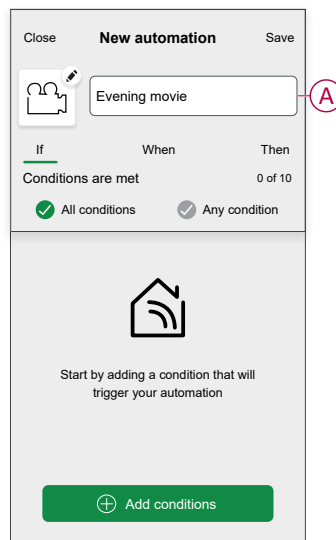
## Related Topics

- Using the device (Parent Topic)
- Creating an automation
- Editing an automation
- Deleting an automation

## Creating an automation

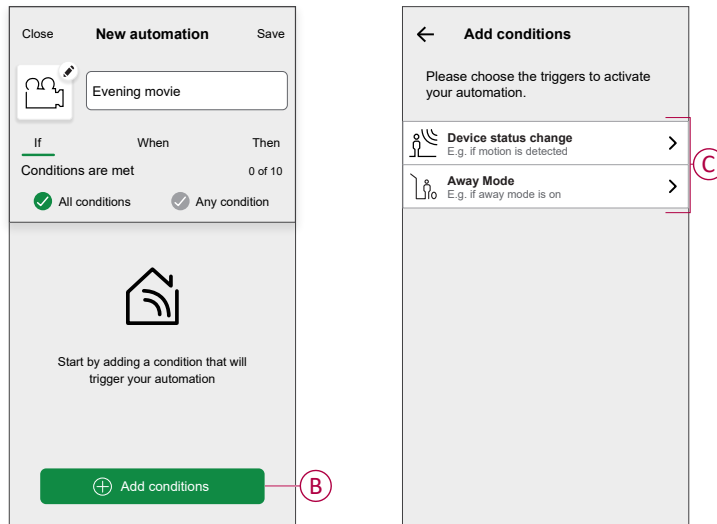
1. On the Home screen, tap .
2. Go to **Automation** and then tap  to create an automation.
3. Enter the name of the automation (A) and select any of the following conditions to trigger an automation.
  - **All conditions:** All conditions must be met to trigger an automation.
  - **Any condition:** Any one of the condition must be met to trigger an automation.

**TIP:** You can choose the cover image that represents your automation by tapping .



4. Tap **Add conditions** (B) and select any of the following (C).
- **Device status change** (Select the device): An automation will be triggered based on a device status, such as the opening of a shutter or the detection of movement by a motion sensor.
  - **Away Mode** (Enable or Disable): Away mode can also trigger an automation to turn on the lights, close the shutter etc. For more information about **Away Mode**, refer to the system user guide.

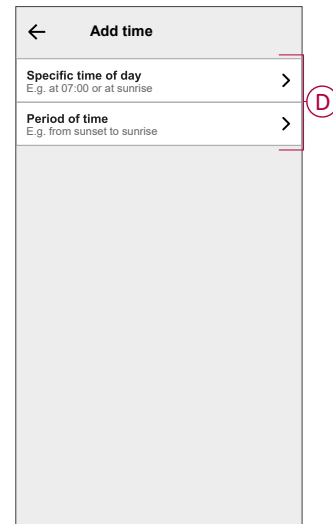
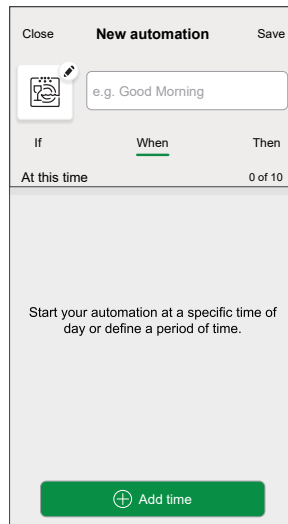
**NOTE:** Maximum 10 conditions can be added.



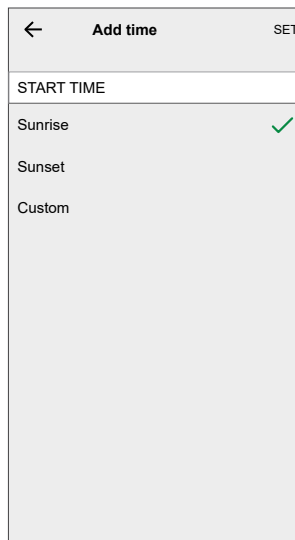
5. To start your automation at a particular time, tap **When > Add time** and select any of the following (D):

**NOTE:** Maximum 10 time entries can be added.

- **Specific time of day** - The automation will trigger at a specific time of the day, such as at sunrise, sunset, or at 8:00 AM.
- **Period of time** - The automation will be trigger during time periods such as from sunrise to sunset, or sunset to sunrise, or from 8:00 AM to 5:00 PM.



- a. In this example, we will choose **Specific time of day** and then select **Sunset** as the start time for the automation.



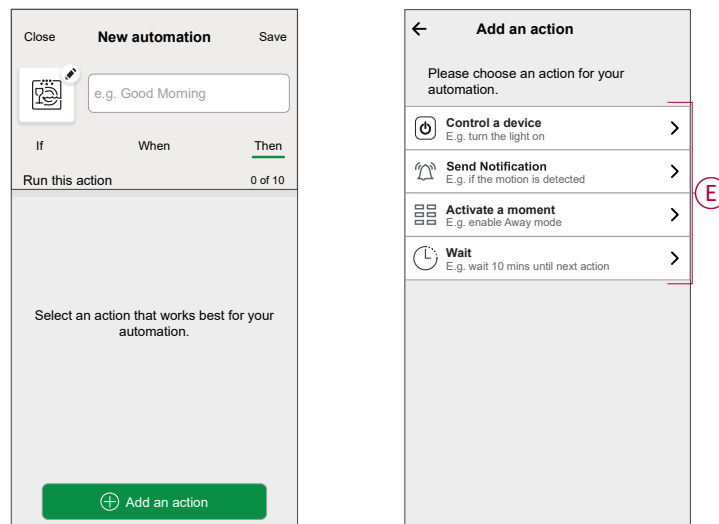
- b. After choosing the automation start time, tap on **Set** on the upper right corner.



6. To add an action, tap **Then > Add an action** and select any of the following (E):

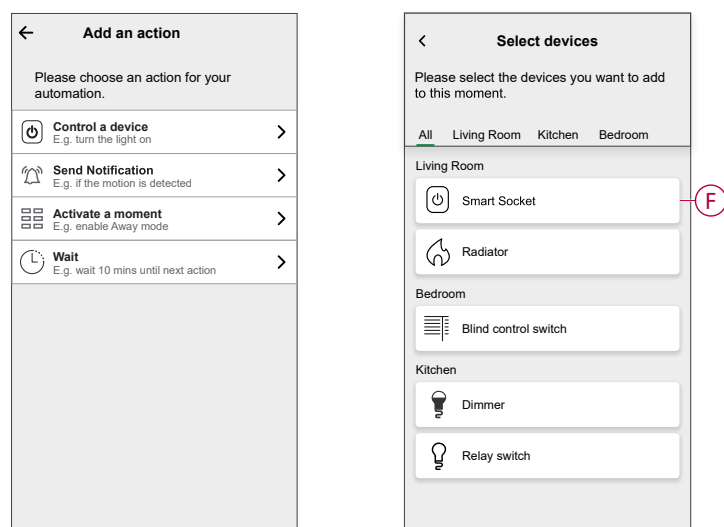
**NOTE:** Maximum 10 actions can be added.

- **Control a device** - Select the device and set the desired state of the device.
- **Send notification** - You will be notified if the condition is met.
- **Activate a moment** - Select a Moment to activate during the automation.
- **Wait** - This option allows you to add a delay in an automation sequence. You can set the wait time in increments of 1 hour and 1 minute, up to a maximum of 24 hours. This feature is useful for delaying actions within an automation.



- a. In this example, we will initially select **Control a device** and select **Smart Socket** (F) as the device to trigger an action, later, we will select for the **Wait** option to add a delay in the automation.

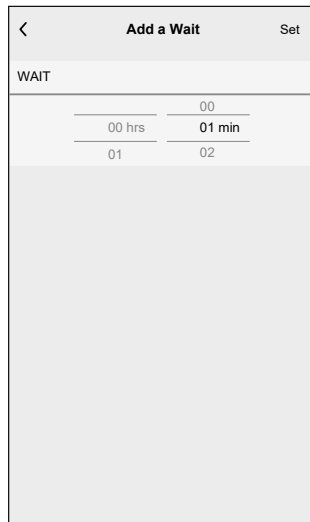
**IMPORTANT:** You cannot select the same device that you selected for **Add conditions** in Step 4. The device should be different.



- b. Set the state, such as On/Off state of the Smart Socket. Then, tap **Set** located on the upper right corner.

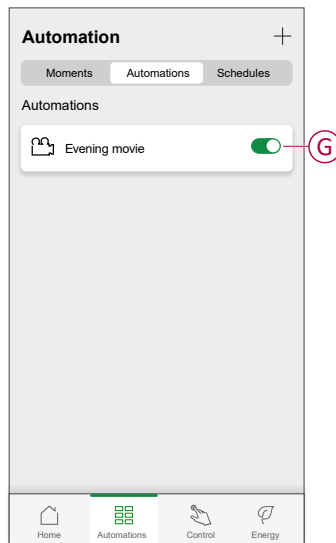


- c. Again, tap **Add an action** and select **Wait** option.
- d. Scroll through the minutes and set the wait time to 1 minute. Then, tap **Set** located on the upper right corner.



7. Tap **Save**.


The saved Automation is displayed on the **Automation** page. Tap the toggle switch (G) on the Automation page to enable/disable the Automation.






## Related Topics

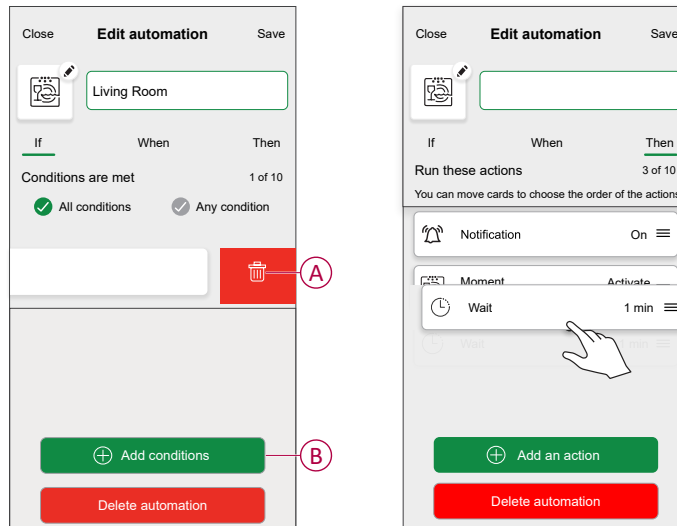
- Automation (Parent Topic)

## Editing an automation

1. On the **Home** screen, tap **Automations** .
2. Go to **Automation**, tap the automation you want to edit.

3. On the **Edit automation** screen, you can perform the following changes:

- Change the icon .
- Rename the automation.
- Tap each condition to change the settings.
  - To remove a condition, slide the condition towards left and then tap  (A) to delete it.
  - Tap  **Add conditions** (B) to add new condition.
- To change the order of actions, tap the **Then** option, and hold an action, then drag and drop to the desired position.




4. Tap **Save** to save the changes.

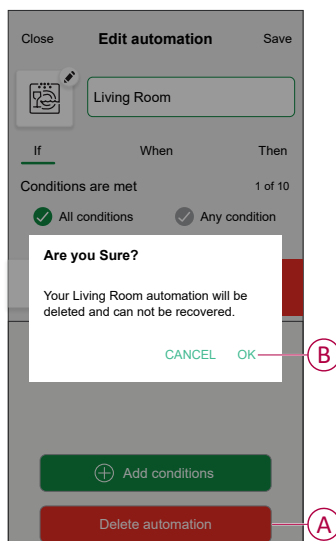
## Related Topics

- Automation (Parent Topic)

## Deleting an automation

1. On the **Home** screen, tap **Automations** .
2. Go to **Automation**, tap the automation you want to delete.

- On the **Edit automation** screen, tap **Delete automation** (A) and read the confirmation message and then tap **OK** (B).



## Related Topics

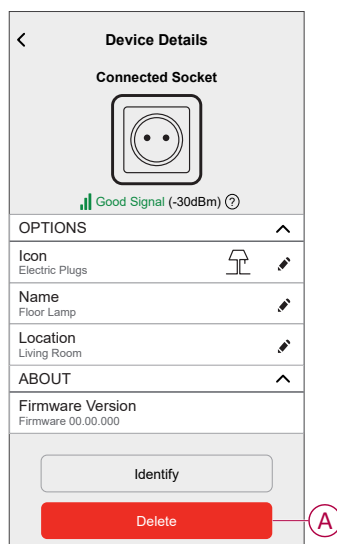
- Automation (Parent Topic)

# Removing the device from the system

Using the Wiser Home app, you can remove the Socket outlet from the Wiser system.

To remove the Socket outlet:

- On the Home page, tap .
- Tap **Devices > Connected Socket > Delete** (A).



## Related Topics

- System M and System D - Connected Single Socket Outlet 16 A (Parent Topic)

## Resetting the device

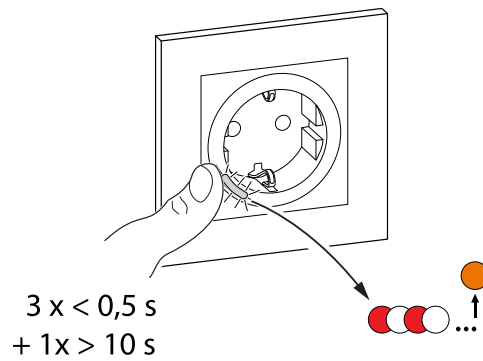
You can reset the Socket outlet to the factory default. It can be reset manually at any time, e.g., when the Hub is replaced.

1. Short press the push button 3 times and hold for 10 seconds to reset the device to the factory default mode.
2. After 10 s, LED starts blinking red then release the push button.

The LED stops blinking upon successful reset of the device.

The plug restarts and blinks green for a few seconds.

**NOTE:** All configuration data, user data and network data are deleted.





### Related Topics



- System M and System D - Connected Single Socket Outlet 16 A (Parent Topic)

## LED indications



### Pairing the device

User Action	LED Indication	Status
Press the push button 3 times	LED blinks amber, once per second. 	Pairing mode is active for 30 seconds. When pairing is completed, LED displays solid green for a time, before turning Off. 


### Resetting the device

User Action	LED Indication	Status
Press the push button 3 times and hold it down once for > 10 s.	After 10 s, the LED starts blinking red. 	The device is in reset mode. It is reset to the factory settings after 10 seconds. The device then restarts, and the LED glows solid orange. 





### Setting (Default state)

Status	LED Indication	Description
	The Red LED glows.	The Red LED glows when the output is switched ON.
	All the LEDs are OFF.	The LEDs are OFF, when the output is OFF.

### Alarms

Status	LED Indication	Description
	Blinking red fast	When there is an overload or over temperature alarm and the device is switched off.

### LED Indicator Mode/Backlight Mode

Load Status	ON	OFF
Reverse with load	No LED	
Consistent with load		No LED
Always Off	No LED	No LED
Always On		

## Related Topics

- System M and System D - Connected Single Socket Outlet 16 A (Parent Topic)

## Troubleshooting




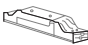
Symptom	Possible cause	Solution
The Socket outlet is not turning ON.	The Socket outlet is broken, or there could be an alarm if the LED blinks red.	First, power cycle the Socket outlet and check if it works afterwards. If it is still not working, you can replace the Socket outlet.
User cannot switch ON the output locally or remotely until the alarm is cleared.  LED blinks fast RED.	Clear the Socket outlet alarms.	To clear the alarm, press and hold the push button for 4 seconds. After 4 seconds, the blinking will stop and the alarm will be cleared, you can use the Socket outlet again.  <b>NOTE:</b> Before clearing the alarm, you should take care of the reason why overload/temperature happened for safety.

## Related Topics

- System M and System D - Connected Single Socket Outlet 16 A (Parent Topic)



## Technical Data

Nominal power rating for load type			
 2000 W	 100 W, 125 $\mu$ F	 1500 VA	 2000 VA
<b>R</b> 3680 W	<b>C</b> 6 AX, max. 70 $\mu$ F	<b>L</b> 16 A, $\cos \varphi = 0.6$	<b>M</b> 1600 VA, max 7 A

Nominal voltage:	AC 230 V~, 50 Hz
Standby:	max 0.4 W
Fuse protection:	16 A miniature circuit breaker
Connecting terminals:	Terminals for max. 2 x 2.5 mm <sup>2</sup>
Operating frequency:	2405-2480 MHz
Max. radio-frequency power transmitted:	< 10 mW
Protection:	IP20
Measuring accuracy:	$\pm 1$ % for loads > 25 W
Communication protocol:	Zigbee 3.0 certified

### Related Topics

- System M and System D - Connected Single Socket Outlet 16 A (Parent Topic)

# Compliance

## Related Topics

- Product Environmental Data
- Declaration of Conformity
- Trademarks

## Product Environmental Data

Find and download comprehensive environmental data about your products, including RoHS compliance and REACH declarations as well as Product Environmental Profile (PEP), End-of-Life instructions (EOL) and much more.

<https://www.se.com/myschneider>



## General information about Schneider Environmental Data Program

Click the link below to read about Schneider Electric's Environmental Data Program.

<https://www.se.com/ww/en/about-us/sustainability/environmental-data-program/>



## Related Topics

- Compliance (Parent Topic)

## Declaration of Conformity

Hereby, Schneider Electric Industries SAS, declares that this product is in compliance with the essential requirements and other relevant provisions of RADIO EQUIPMENT DIRECTIVE 2014/53/EU.

Declaration of conformity can be downloaded on:

- <https://www.go2se.com/ref=MEG2380-0319>
- <https://www.go2se.com/ref=MEG2380-6034>

### Related Topics

- Compliance (Parent Topic)

## Trademarks

This guide makes reference to system and brand names that are trademarks of their relevant owners.

- Zigbee® is a registered trademark of the Connectivity Standards Alliance.
- Apple® and App Store® are brand names or registered trademarks of Apple Inc.
- Google Play™ Store and Android™ are brand names or registered trademarks of Google Inc.
- Wi-Fi® is a registered trademark of Wi-Fi Alliance®.
- Wiser™ is a trademark and the property of Schneider Electric, its subsidiaries and affiliated companies.
- Amazon Alexa™ is a trademark of AMAZON TECHNOLOGIES, INC.
- Google Home™ is a trademark of Google INC.
- Airzone is a trademark of CORPORACIÓN EMPRESARIAL ALTRA S.L. company.
- Aidoo is a trademark of CORPORACIÓN EMPRESARIAL ALTRA S.L. company.

Other brands and registered trademarks are the property of their respective owners.

### Related Topics

- Compliance (Parent Topic)

Schneider Electric  
35 rue Joseph Monier  
92500 Rueil Malmaison  
France

+ 33 (0) 1 41 29 70 00

[www.se.com](http://www.se.com)

As standards, specifications, and design change from time to time, please ask for confirmation of the information given in this publication.

© 2021 – 2025 Schneider Electric. All rights reserved.

DUG\_SysM/SysD SSO\_WH-06