

Wiser Multiwire Micro Module LED Dimmer

Device user guide

Information about features and functionality of the device.
03/2025



Legal Information

The information provided in this document contains general descriptions, technical characteristics and/or recommendations related to products/solutions.

This document is not intended as a substitute for a detailed study or operational and site-specific development or schematic plan. It is not to be used for determining suitability or reliability of the products/solutions for specific user applications. It is the duty of any such user to perform or have any professional expert of its choice (integrator, specifier or the like) perform the appropriate and comprehensive risk analysis, evaluation and testing of the products/solutions with respect to the relevant specific application or use thereof.

The Schneider Electric brand and any trademarks of Schneider Electric SE and its subsidiaries referred to in this document are the property of Schneider Electric SE or its subsidiaries. All other brands may be trademarks of their respective owner.

This document and its content are protected under applicable copyright laws and provided for informative use only. No part of this document may be reproduced or transmitted in any form or by any means (electronic, mechanical, photocopying, recording, or otherwise), for any purpose, without the prior written permission of Schneider Electric.

Schneider Electric does not grant any right or license for commercial use of the document or its content, except for a non-exclusive and personal license to consult it on an "as is" basis.

Schneider Electric reserves the right to make changes or updates with respect to or in the content of this document or the format thereof, at any time without notice.

To the extent permitted by applicable law, no responsibility or liability is assumed by Schneider Electric and its subsidiaries for any errors or omissions in the informational content of this document, as well as any non-intended use or misuse of the content thereof.

Table of Contents

Safety Information.....	4
Wiser Multiwire Micro Module LED Dimmer	5
For your safety	5
About the device.....	5
Installing the device	6
Testing the device.....	6
Quick Home Connect.....	7
Pairing Wiser Wireless Switch with Multiwire Micro Module	
Dimmer	8
Operating a Dimmer.....	8
Pairing two Dimmers	9
Adjusting the brightness on the dimmer	12
Resetting the Device in Quick Home Connect	15
LED Indications in Quick Home Connect.....	15
Troubleshooting in Quick Home Connect	15
Pairing the device with Wiser Hub	16
Configuring the device	17
Setting the device location	19
Setting Dimming Mode	19
Setting up the Power On Behaviour.....	20
Configure Connected Switches	21
Setting Brightness level	28
Using the device.....	29
Manual operation	29
Adjusting the brightness level using app	29
Turning On/Off dimmer using app.....	30
Schedule.....	30
Moments.....	32
Automation.....	36
Removing the device from Wiser system	42
Resetting the device	42
LED indication	43
Troubleshooting	43
Technical data	44
Compliance	46
Product Environmental Data.....	46
EU Declaration of Conformity	47
Trademarks.....	47

Safety Information

Important Information

Read these instructions carefully and look at the equipment to become familiar with the device before trying to install, operate, service, or maintain it. The following special messages may appear throughout this manual or on the equipment to warn of potential hazards or to call attention to information that clarifies or simplifies a procedure.



The addition of either symbol to a “Danger” or “Warning” safety label indicates that an electrical hazard exists which will result in personal injury if the instructions are not followed.



This is the safety alert symbol. It is used to alert you to potential personal injury hazards. Obey all safety messages that accompany this symbol to avoid possible injury or death.

DANGER

DANGER indicates a hazardous situation which, if not avoided, **will result in** death or serious injury.

Failure to follow these instructions will result in death or serious injury.

WARNING

WARNING indicates a hazardous situation which, if not avoided, **could result in** death or serious injury.

CAUTION

CAUTION indicates a hazardous situation which, if not avoided, **could result in** minor or moderate injury.

NOTICE

NOTICE is used to address practices not related to physical injury.

Wiser Multiwire Micro Module LED Dimmer



CCT5010-0003

For your safety

⚠️⚠️ DANGER

HAZARD OF ELECTRIC SHOCK, EXPLOSION, OR ARC FLASH

Safe electrical installation must be carried out only by skilled professionals. Skilled professionals must prove profound knowledge in the following areas:

- Connecting to installation networks.
- Connecting several electrical devices.
- Laying electric cables.
- Safety standards, local wiring rules and regulations.

Failure to follow these instructions will result in death or serious injury.

⚠️ DANGER

HAZARD OF ELECTRIC SHOCK

- Make sure that the terminal connection area does not come in contact with the metallic parts of any device installed in the same location.
- Do not short the outputs to neutral.

Failure to follow these instructions will result in death or serious injury.

About the device

The Wiser Multiwire Micro Module LED Dimmer (hereinafter referred to as Dimmer / Micromodule Dimmer) combines the advantages of smart dimmer functionality with ordinary mechanical push-button switches. It transforms a conventional switch into a connected device which can be controlled by a push button or through the Wiser app. It can switch and dim the ohmic or capacitive loads and it is also compatible with dimmable LEDs.

NOTE: Do not control any devices that depend on a permanent power supply.

Additional features:

- Remote control with maximum of 10 single mechanical push-buttons.

- Setting the LED operating mode manually (RL LED mode).
- Electronic overload protection, overheating protection, and short-circuit protection.
- Setting the dimming range: minimum and maximum brightness.
- Setting a time schedule with the Wiser app.

Installing the device

Refer to the installation instruction supplied with this product.

See Wiser Multiwire Micro Module LED Dimmer.

Testing the device

Before using the dimmer, manually test it and make sure that it works when connected to the lighting devices.

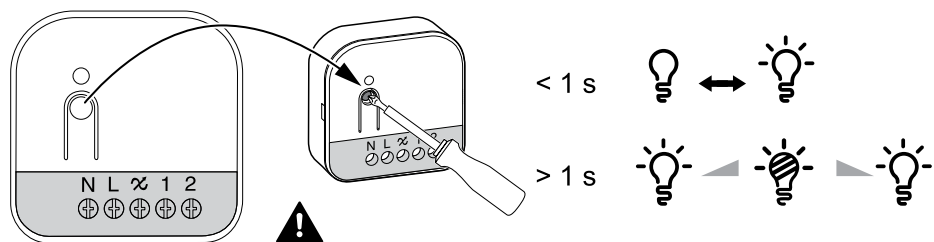
⚠ WARNING

HAZARD OF ELECTRIC SHOCK

- Observe the regulations for working on live parts.
- Only actuate the device buttons using insulated auxiliary equipment that meets the requirements of EN 60900.

Failure to follow these instructions can result in death, serious injury, or equipment damage.

- Short press the Set (Setup/Reset) button once, the connected lighting device turns on/off.
- Press and hold the Set (Setup/Reset) button to adjust the dimming level of the connected lighting device.



Quick Home Connect

Quick Home Connect is a wireless connectivity solution for Zigbee devices without the need for a Hub/Gateway or smartphone application. Quick Home Connect is your starting point for wireless home automation. It performs functions like switching, dimming and shutter control using the Connected Wireless Switch (hereinafter referred to as Wireless switch) via a Zigbee network.

The **Wireless switch** is a battery-powered wireless push-button switch that is used to control Zigbee devices (such as dimmer, shutter, switch, and socket) within the same Zigbee network.

Limitations

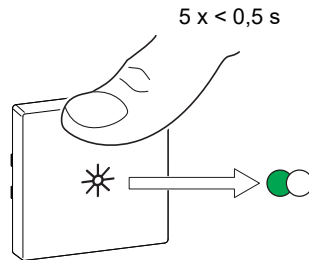
- Quick Home Connect serves only as a room control solution.
- With a 1-gang Wireless switch, you cannot mix lighting and shutter control. However, with a 2-gang Wireless switch, you can assign one gang for dimming/switching and the other for shutter control, or vice versa.
- This solution does not support remote control, smartphone app usage, or scheduling features.

Pairing Wiser Wireless Switch with Multiwire Micro Module Dimmer

Prerequisites: While connecting the dimmer to the mechanical push buttons, make sure that the terminal 1 of the dimmer is wired to the left mechanical push button, and terminal 2 of the dimmer is wired to the right mechanical push button.

1. Short press the upper push button 5 times in quick succession on the Wireless switch.

The status LED blinks green.



2.

⚠ WARNING

HAZARD OF ELECTRIC SHOCK

- Observe the regulations for working on live parts.
- Only actuate the device buttons using insulated auxiliary equipment that meets the requirements of EN 60900.

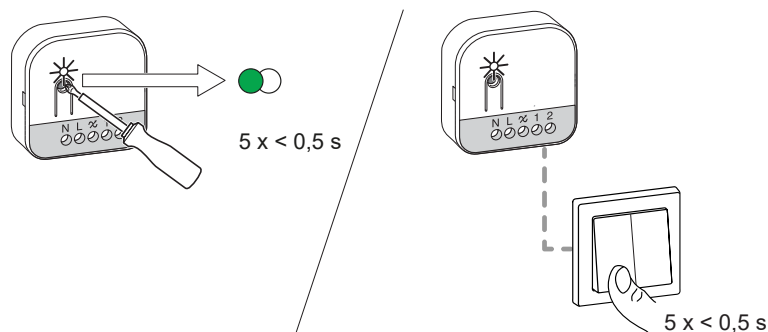
Failure to follow these instructions can result in death, serious injury, or equipment damage.

Follow either of the options to pair the Dimmer:

- Short press the Setup/Reset button 5 times in quick succession on the Dimmer.
- Short press the left push button (Wired to terminal 1) 5 times in quick succession.

The status LED blinks green on the Dimmer.

NOTE: If the Dimmer is located behind the mechanical push-button, the status LED is not visible.

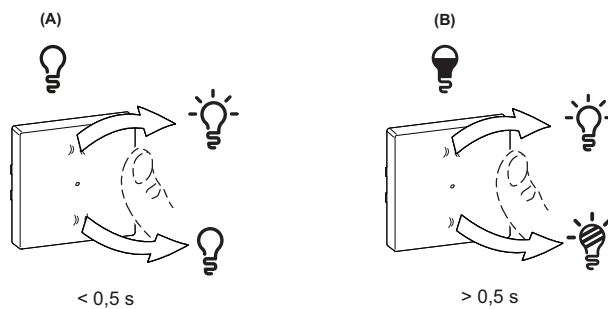


The light connected to the Dimmer blinks for a few times. The status LED stops blinking green on the Wireless switch and the Dimmer. The Dimmer can now be controlled by the Wireless switch.

Operating a Dimmer

You can switch the dimmer ON/OFF and adjust its brightness using the paired Wireless switch.

- Short press the top or bottom of the Wireless switch ($< 0,5$ s) to turn ON/OFF the connected load (A).
- Long press the top or bottom of the Wireless switch ($> 0,5$ s) to increase or decrease the brightness of the connected load (B).



Pairing two Dimmers

You can pair 2 dimmers as a part of Quick Home Connect for wireless home automation.

NOTE:

- You can operate 2 dimmers without the need for Wireless switch as a part of Quick Home Connect.
- One or more dimmers should be connected to a 2 gang mechanical push-button. Refer to the below wiring diagram.
- You must put both dimmers in a pairing mode at the same time. The pairing mode will be active for about a minute.

⚠ DANGER

HAZARD OF ELECTRIC SHOCK, EXPLOSION, OR ARC FLASH

Safe electrical installation must be carried out only by skilled professionals. Skilled professionals must prove profound knowledge in the following areas:

- Connecting to installation networks.
- Connecting several electrical devices.
- Laying electric cables.
- Safety standards, local wiring rules and regulations.

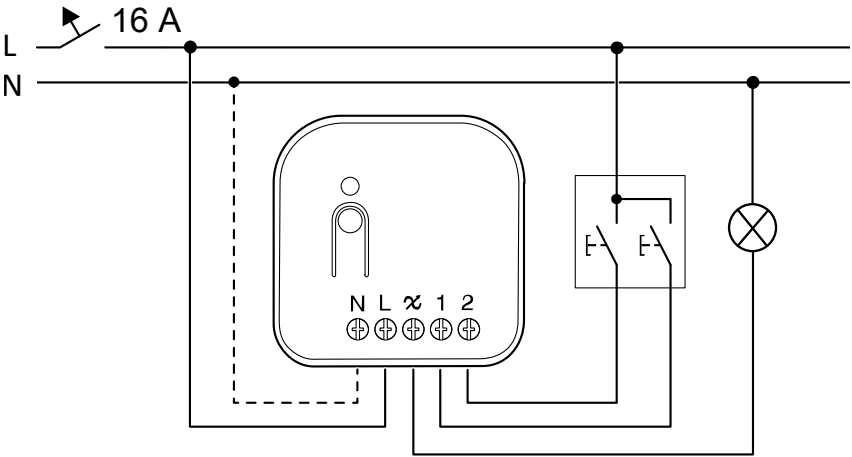
Failure to follow these instructions will result in death or serious injury.

⚠ DANGER

HAZARD OF ELECTRIC SHOCK

- Make sure that the terminal connection area does not come in contact with the metallic parts of any device installed in the same location.
- Do not short the outputs to neutral.

Failure to follow these instructions will result in death or serious injury.



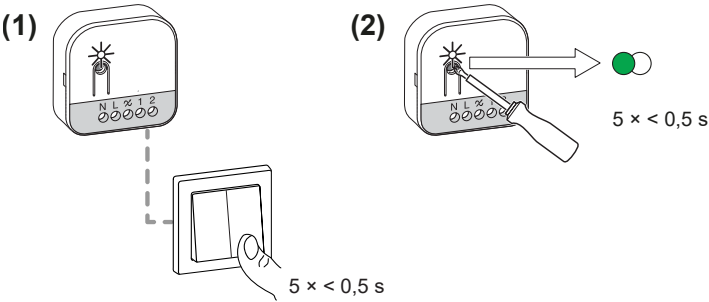
Below are 2 scenarios where you can pair the dimmers with each other.

Scenario 1: Dimmer-1 is wired to a 2 gang mechanical push-button and Dimmer-2 is not connected to any push-button and it remotely controlled by Dimmer-1. Upon pairing, you can control the Dimmer-2 from Dimmer-1.

1. On Dimmer-1, short press the right mechanical push button 5 times in quick succession.
2. On Dimmer-2, short press the Setup/Reset button 5 times in quick succession on the dimmer.

The status LED blinks green on the dimmer LED.

NOTE: If the dimmer is located behind the mechanical push-button, the status LED is not visible.



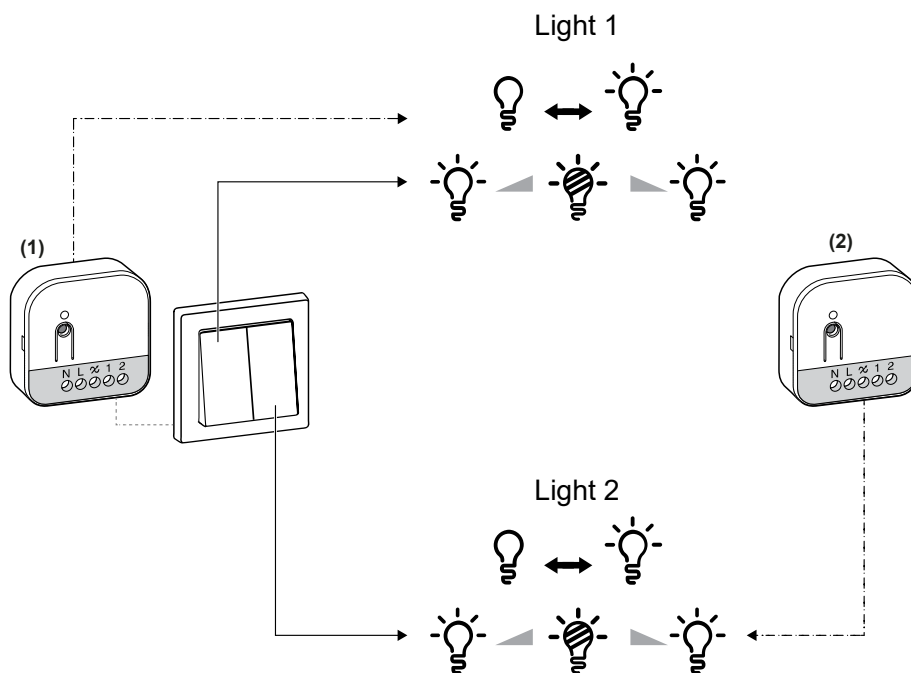
The light connected to the dimmer blinks for a few times. The dimmer can now be controlled by the push-button.

Operating the dimmers: Short press the push buttons to turn on/off the light as mentioned in the following table.

Push button control	Load
Left push button (Wired to terminal 1)	Light 1
Right push button (Wired to terminal 2)	Light 2

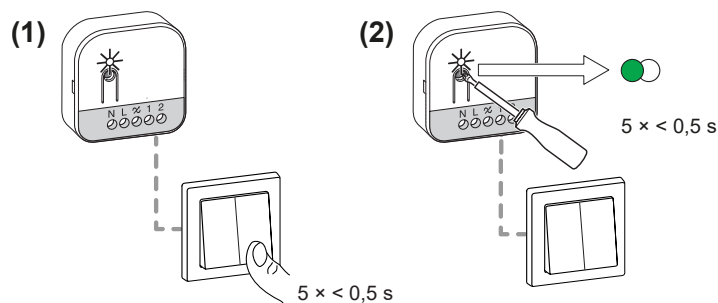
- Press and hold the push button to adjust the brightness of the light.

NOTE: This step is same for both the (right and left) push-buttons.



Scenario 2: Both dimmers are wired to their respective push-buttons. Upon pairing, both the dimmers can be controlled vice versa. That means Dimmer-1 can control Dimmer-2 and Dimmer-2 can control Dimmer-1.

- On Dimmer-2, short press the right mechanical push button 5 times in quick succession.
- On Dimmer-1, short press the Setup/Reset button 5 times in quick succession on the dimmer.



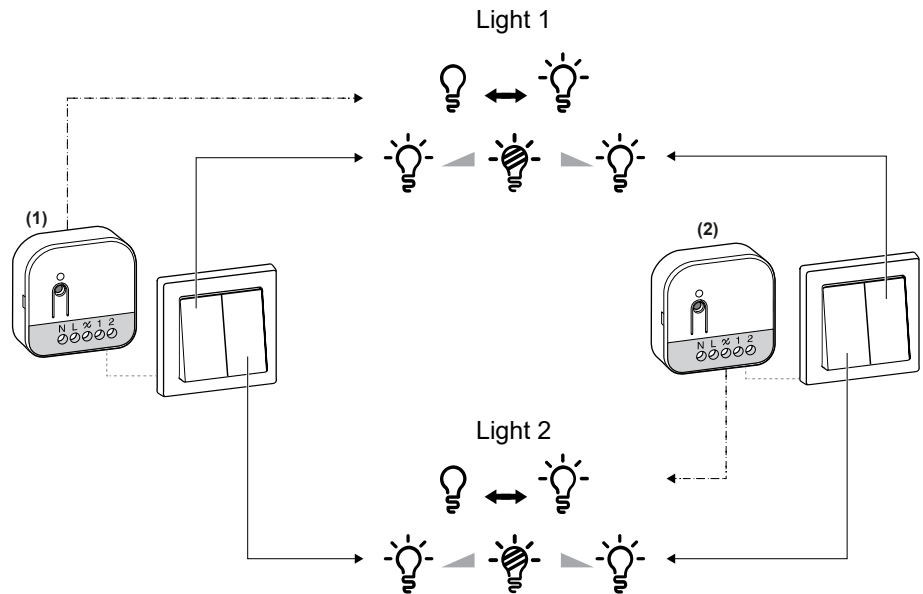
The light connected to the dimmer blinks for a few times. The dimmer can now be controlled by the mechanical push-button.

Operating the dimmers: Short press the push buttons to turn on/off the light as mentioned in the following table.

Push button control	Load
Dimmer 1	
Left push button (Wired to terminal 1)	Light 1
Right push button (Wired to terminal 2)	Light 2
Dimmer 2	
Left push button (Wired to terminal 1)	Light 2
Right push button (Wired to terminal 2)	Light 1

- Press and hold the push button to adjust the brightness of the light.

NOTE: This step is same for both the (right and left) push-buttons.

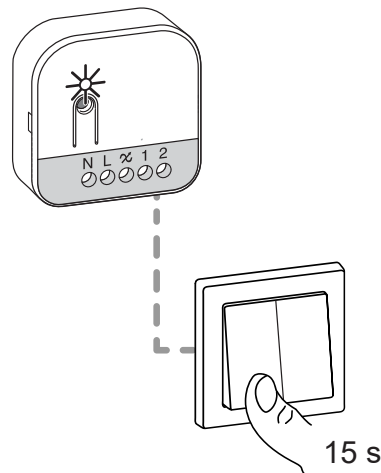


Adjusting the brightness on the dimmer

You can set the minimum/maximum brightness of the dimmer.

IMPORTANT: Set the minimum/maximum brightness settings of the dimmer only after pairing it with Wireless switch. Refer [Pairing Wireless switch with Multiwire micro module dimmer](#), page 8.

Press and hold the left mechanical push button for 15 s.



The dimmer LED blinks green and then the connected load blinks till the settings mode is confirmed.

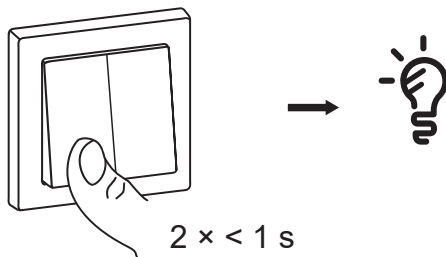
Refer to the following sections for minimum and maximum brightness settings.

NOTE: Some lamps have a starting point. When you turn on the lamp at a low brightness, it quickly gets very bright and then goes back to the lower brightness automatically. This is the behaviour of the lamp and the dimmer can't change it.

Adjusting minimum brightness:

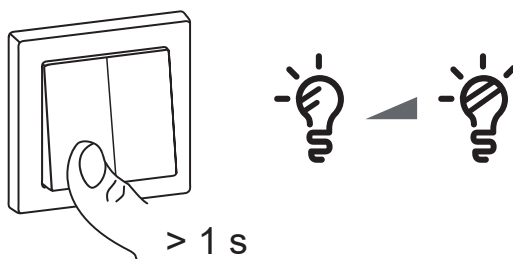
1. When in brightness settings mode, short press the left mechanical push button 2 times.

The light reaches the minimum brightness level.



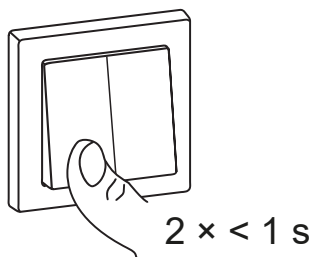
2. Long press the left mechanical push button to set the minimum brightness of your choice.

TIP: If you release the push button and then long press it again, it will adjust the brightness in the opposite direction from the previous dimming action (either darker or brighter, based on the prior dimming direction).



3. Wait for the time out for 30 s or short press the left mechanical push button 2 times to confirm the settings.

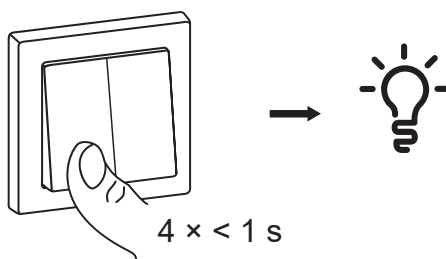
The light blinks for few times indicating that the setting is saved.



Adjusting maximum brightness:

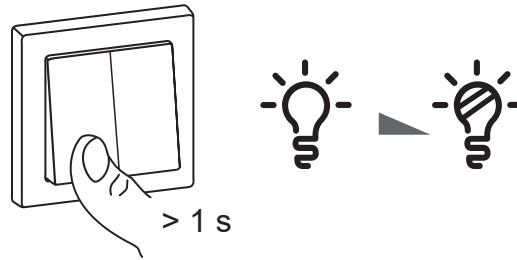
1. When in brightness setting mode, short press the left mechanical push button 4 times.

The light reaches current maximum brightness level.



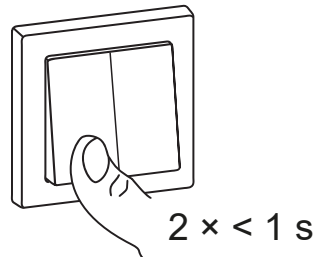
2. Long press the left mechanical push button to set the maximum brightness of your choice.

TIP: If you release the push button and then long press it again, it will adjust the brightness in the opposite direction from the previous dimming action (either darker or brighter, based on the prior dimming direction).



3. Wait for the time out for 30 s or short press the left mechanical push button 2 times to confirm the settings.

The light blinks for few times indicating that the setting is saved.



Resetting the Device in Quick Home Connect

It is necessary to reset the devices in the following scenarios:



- Unpair the device in Quick Home Connect:
- Refer to
 - Resetting the Wireless switch
 - Resetting the Multiwire micro module dimmer

When reset is done successfully. The Wireless switch and device returns to factory default.

- Integrating into Wiser System
 - If you wish to integrate the devices into Wiser System, reset all the devices in Quick Home Connect and refer to pairing the device with Wiser Hub/ Gateway.

LED Indications in Quick Home Connect

Pairing the device in Quick Home Connect

User Action	LED Indication	Status
Press the push button 5 times in quick succession.	LED blinks green, once per second. 	Pairing mode is active for 60 seconds. When pairing is completed, LED stops blinking. 



Troubleshooting in Quick Home Connect

Symptom	Possible cause	Solution
LED displays amber on the device.	Pairing not completed and returned to factory default.	Pair the Wireless switch and the device again. Refer to <ul style="list-style-type: none"> • Multiwire micro module dimmer, page 8
Wireless switch not able to control the device reliably.	The Wireless switch and the device are too far away from each other.	Place the Wireless switch in a position closer to the device.
	The Wireless switch lost pairing.	Pair the device again. Refer to <ul style="list-style-type: none"> • Multiwire micro module dimmer, page 8
	The Wireless switch battery is discharged.	Replace the battery of the Wireless switch

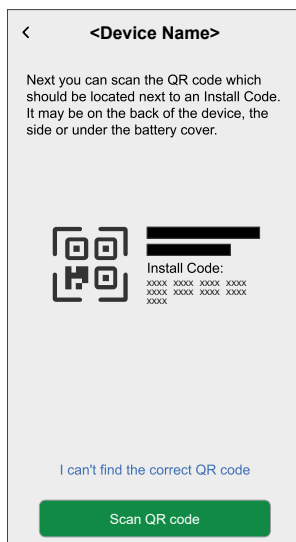
Scenario	Procedure
Control multiple devices with one Wireless switch.	To control multiple devices with a single Wireless switch, start by pairing it with one device. Then, use the same Wireless switch to pair with additional devices. NOTE: You can pair up to 7 devices to a single Wireless switch.
1-gang FLS with devices (relay switch, dimmer, shutter control, or socket outlet).	Pair the Wireless switch with any of the devices (relay switch, dimmer, shutter control, or socket outlet).
2-gang FLS with devices (relay switch, dimmer, shutter control, or socket outlet).	Pair either left or right Wireless switch with any of the devices (relay switch, dimmer, shutter control, or socket outlet). You can also pair another rocker of the Wireless switch with another device.

Pairing the device with Wiser Hub

Using the Wiser Home app, pair your dimmer with the **Wiser Hub** to access and control the dimmer.

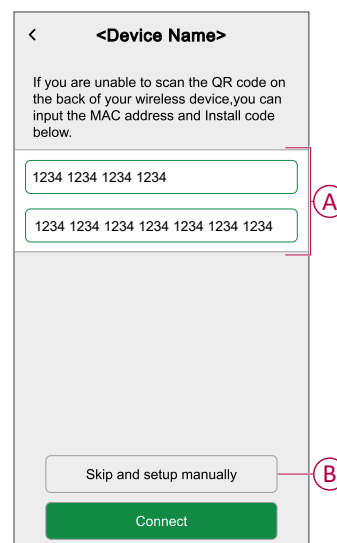
1. On the Home screen, tap  > **Devices** >  > **Lights** > **Micromodule Dimmer** > **Next**
2. Tap **Scan QR code** and allow the Wiser Home app to access your camera. Then, scan the QR code located on the device.

NOTE: If you are unable to find the correct QR code, tap **I can't find the correct QR code** to pair the device manually and proceed to step 4.



If the QR code is incorrect, a message **Incorrect QR code scanned** will appear. Tap **I can't scan the QR code** and choose one of the following options:

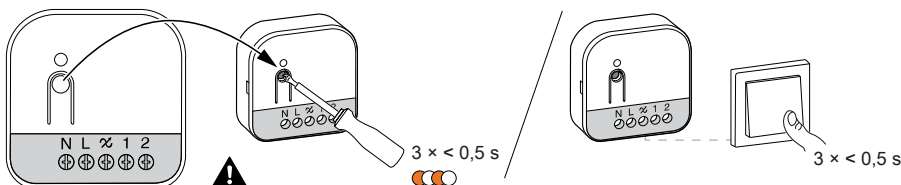
- **(A):** Enter the **Mac Address/EUI-64** and **Install Code**, then tap **Connect**. The app will verify if the Mac Address/EUI-64 and Install code are valid.
- **(B):** Tap this option if you are unable to find the Mac Address/EUI-64 and Install code.



3. Once the device is validated, tap **Next**, perform any one of the following actions to add the device:
 - Short press the Set (setup/reset) button 3 times (<0,5 s) on the dimmer with a screwdriver.
 - Short press the mechanical push button (wired to terminal 1 of the dimmer) for 3 times.

The LED blinks amber.

NOTE: If the dimmer is located behind the push button, the status LED is not visible.




4. Wait for a few seconds until the LED turns green. You can also see in the app that the device is joined.

After a few seconds, a solid green LED indicates that the device is successfully paired to the Hub.

NOTE: If the LED is blinking green and red, see the instructions by tapping the link **LED not blinking amber?** .




5. Tap , to enter the name of the device.
6. Tap **Next** and assign the device to a new room or an existing room and tap **Submit**.

IMPORTANT: The next screen shows the **Device Settings** page, where you have the option to configure the device settings during the pairing process or at a later time. If you prefer to configure it later, tap **Submit**. For more information on device settings, refer to [Configuring the device](#), page 17 section.

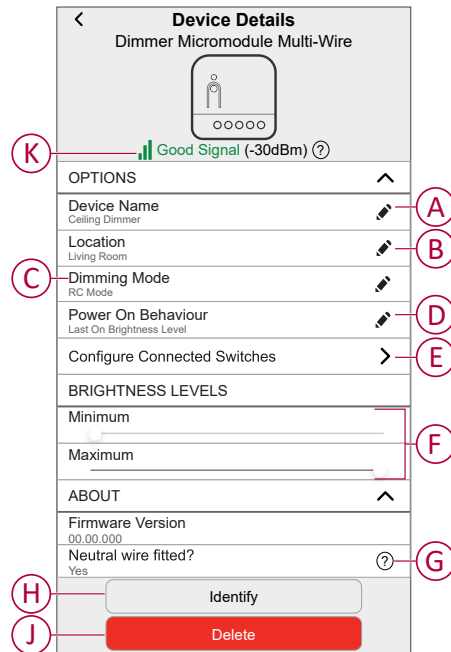
The dimmer is now listed **Control** tab under **All** and **Room** tabs.

Configuring the device

Using the Wiser home app, you can configure the dimmer according to your preferences.

1. On the Home screen, tap .



2. Tap **Devices > Lights > Micromodule Dimmer** to locate to the **Device Details** screen.

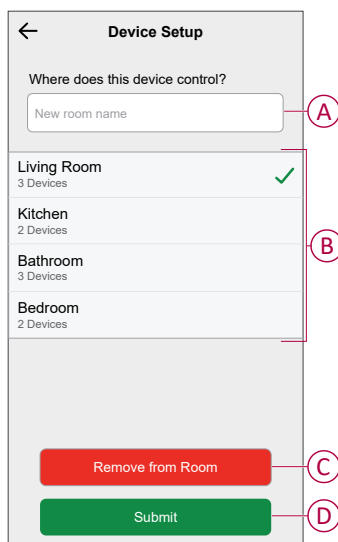


A	Device Name: Tap to change the name of the device.
B	Location: Tap to assign the Dimmer to any room (such as living room, bedroom, kitchen etc). Refer to Setting the device location , page 19 for more details on how to set the location.
C	Dimming mode: You can improve the dimming quality in the app if you have problems with light flickering. Refer to Setting Dimming Mode , page 19 for detailed information on setting the dimming mode.
D	Power On Behaviour: Tap to set the default brightness level of the dimmer when it is turned on. Refer to Setting up the Power On Behaviour , page 20 for detailed information on each options.
E	Configure Connected Switches: This setting allows you to configure the push-button switches of the dimmer to different functions. Refer to Configure Connected Switches , page 21 for detailed information on each function.
F	BRIGHTNESS LEVELS: This setting lets you set limits on the maximum and minimum brightness of the light. This is done to avoid flickering and switching off the LED. Drag the slider bar of Minimum and Maximum to increase or decrease the Minimum Brightness and Maximum Brightness .
G	Neutral wire fitted: The Wiser app automatically detects the wiring mode based on the installation, eliminating the need for manual selection. Yes , if installed with a neutral wire, NO if installed without a neutral wire.
H	Identify: Tap to identify the device. The status LED blinks red and connected lighting devices blinks On/Off, upon successful identification of the dimmer. Tap OK when you finish identifying the device.
J	Delete: Tap to remove the device from the system. NOTE: <ul style="list-style-type: none"> Removing the device will also reset the dimmer. After reset, the LED turns amber indicating that the dimmer is ready for pairing. If there is a problem while pairing or resetting the dimmer, refer to Resetting the device, page 42.
K	Zigbee Signal Strength Indicator: Zigbee Signal Strength indicator displays the current signal strength of the device. <ul style="list-style-type: none"> Good Signal (between 0 & -54dBm) Normal Signal (between -54 & -79dBm) Poor Signal (<-79dBm) No Signal (device is offline)

Setting the device location

You can change the device location using Wiser Home app (such as bedroom, living room, dining room etc.).

1. On the **Home** screen, tap .
2. Tap **Devices**, select the device from the list for which you wish to change the location.
3. Tap **Location**  to open setup page.
4. On setup page, you can enter **New room name** (A) or select an existing room from the list (B).




TIP: If the device is already assigned, you can remove it from the existing room. Tap **Remove from Room** (C).

5. Once changes are done, tap **Submit** (D).

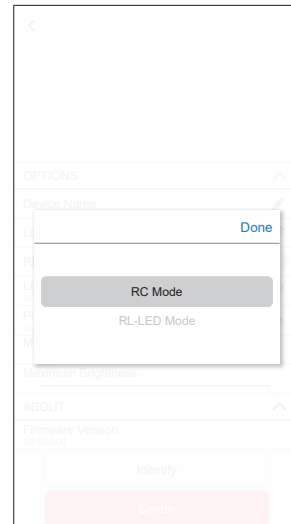
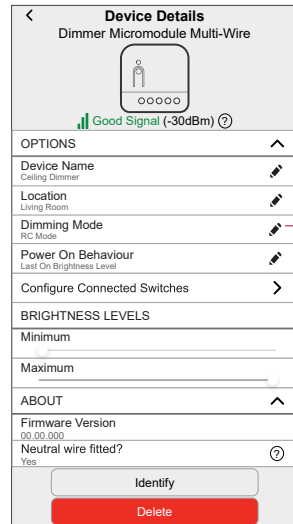
Setting Dimming Mode

Using the Wiser Home app, you can manage the Dimmer modes and settings.

1. On the Home screen, tap .

2. Tap **Devices > Micromodule Dimmer > Dimming Mode (A)** and select either of the following options and tap **Done**.
 - **RC Mode**: When different load types are connected to the dimmer.
 - **RL - LED Mode**: When an LED is connected to the dimmer. Choose this mode only if the LED is not working properly in RC mode. Example, if you have problems with light flickering, changing the dimming mode to RL-LED improves the dimming quality.

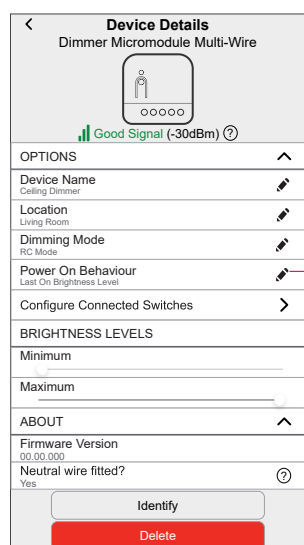
NOTE: RL - LED Mode uses 10 % of the nominal load to avoid overheating of the Dimmer, refer to **Technical data**, page 44.



Setting up the Power On Behaviour

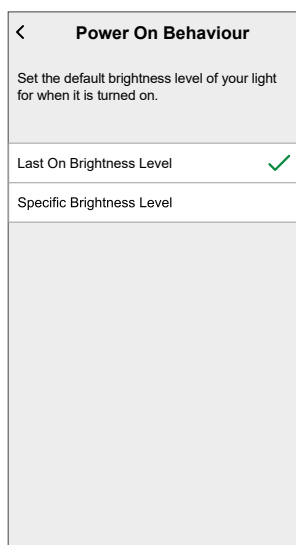
You can configure the dimmer brightness level when turned on.

1. On the Home screen, tap .
2. Tap **Devices > Micromodule Dimmer > Power On Behaviour (A)**.



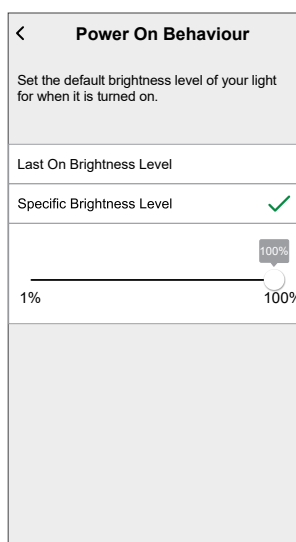
3. Select one of the following options as per your preference:

Last On Brightness Level: The light turns on at the same brightness as when it was last turned off (also called Memory).



The screenshot shows a mobile app interface for 'Power On Behaviour'. At the top, there is a back arrow and the title 'Power On Behaviour'. Below the title is a subtitle: 'Set the default brightness level of your light for when it is turned on.' There are two radio button options: 'Last On Brightness Level' and 'Specific Brightness Level'. The 'Last On Brightness Level' option is selected, indicated by a green checkmark to its right. The 'Specific Brightness Level' option is unselected. Below the options is a large, empty rectangular area.


Specific Brightness Level: This option allows you to get the desired brightness level every time you turn on the light. Drag the slider bar to set the brightness.



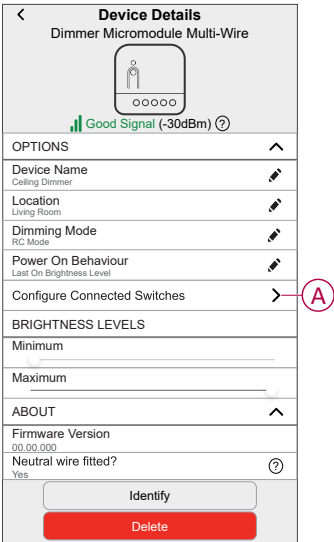
The screenshot shows the same 'Power On Behaviour' settings screen. In this view, the 'Specific Brightness Level' option is selected, indicated by a green checkmark to its right. Below the options is a horizontal slider bar. The slider bar has a circular handle and is labeled with '1%' on the left and '100%' on the right. The handle is positioned at the 100% mark. Below the slider bar is a large, empty rectangular area.

Configure Connected Switches

You can connect one or two mechanical push-button switches to the dimmer. Each switch can be configured to control the light individually or to activate a moment for switching on/off and dimming up/down.

1. On the Home screen, tap .

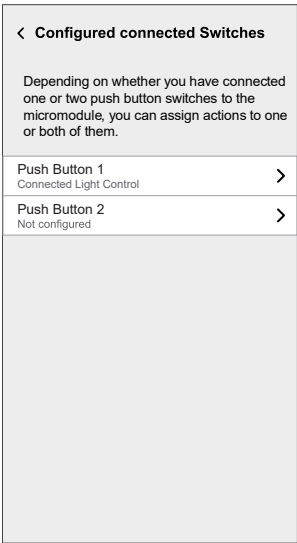
2. Tap **Devices > Micromodule - Dimmer > Configure Connected switches** (A).



3. Select the push button which you want to configure.

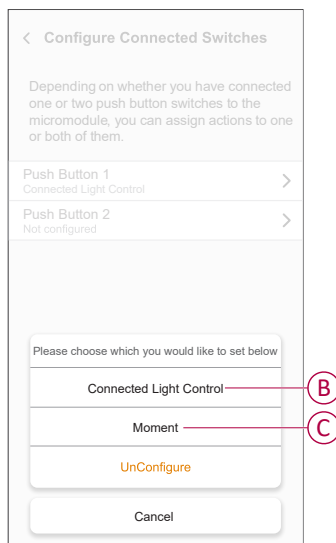
- **Push Button 1**
- **Push Button 2**

By default, push button 1 is configured with Connected Light Control, and you can configure it to the following options based on your need.



4. Select any one of the following:

- **Connected Light Control (B)**
- **Moment (C)**

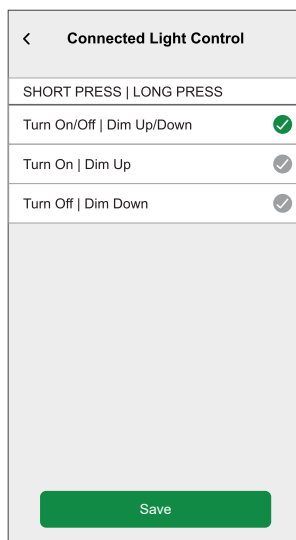


NOTE: In the following section, an explanation of the above-mentioned options can be found.

Connected Light Control

You can set up commands for turning on/off and dimming up/down the lights using the push-button switch.

1. Select **Connected Light Control** from the slide up menu.
2. Tap the option that you want to configure.
 - **Turn On/Off, Dim Up/Down:** The light can be turned on/off by short pressing the push button, and the brightness of the light can be increased/decreased by pressing and holding the push button.
 - **Turn On, Dim Up:** The light can be turned on by short pressing the push button, and the brightness of the light can be increased by pressing and holding the push button.
 - **Turn Off, Dim Down:** The light can be turned off by short pressing the push button, and the brightness of the light can be decreased by pressing and holding the push button.



3. Once the option is selected, tap **Save**.

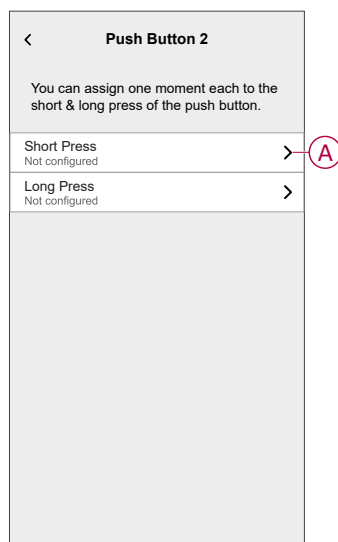
IMPORTANT:

- If you have configured a push button with the **Turn On, Dim Up** option, you can use it to both turn on the light and increase its brightness. However, to turn off the light and reduce its brightness, you should configure another push button with the **Turn Off, Dim Down** option, or you can perform these actions using the app.
- If you have configured a push button with the **Turn Off, Dim Down** option, you can use it to both turn off the light and decrease its brightness. However, to turn on the light and increase its brightness, you should configure another push button with the **Turn On, Dim Up** option, or you can perform these actions using the app.

Push button moment control

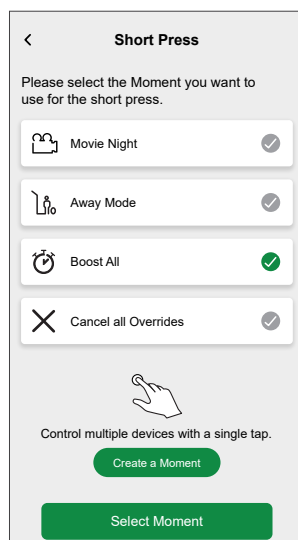
Assign a moment or create a new moment for both the short press and long press of the push-button switch.

1. Select **Moment** from the slide up menu, and then tap **Short Press (A)**.

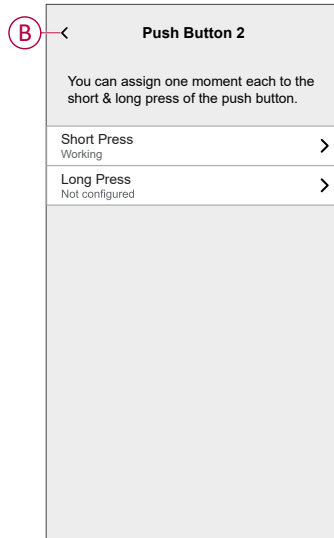


2. Select if there is an existing moment, then tap **Select Moment** or tap **Create a Moment** to create a new moment.

Click the following link for a detailed procedure on creating a new moment, [Creating a moment](#), page 32.



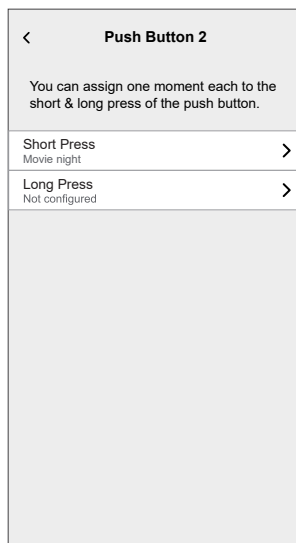
3. Upon selecting the moment, tap the back icon (B) to return to the moment configuration page.



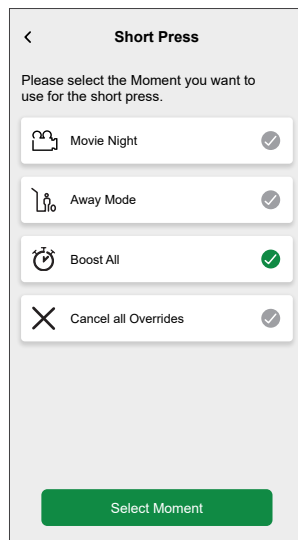
You will now see that the **Short Press** function is configured with a moment. Follow the same procedure for the **Long Press** function.

Changing and Unbinding a moment

1. On the moment control page, tap either **Short Press** or **Long Press**.



2. Choose the following options to change or unbind the moment.
 - **Changing:** Tap the moment you want to configure for Short Press or Long Press function, then tap **Select Moment**.
TIP: The moment with a green tick is the currently selected moment, tap a different moment to make changes.
 - **Unbinding:** Tap the moment you want to unbind for Short Press or Long Press function, then tap **Select Moment**.
TIP: The moment with a green tick is the currently selected moment; tap the moment with the green tick to unbind it.



3. Tap **Yes, I'm sure** to confirm and apply the changes.


Editing and Deleting a moment

Click the following links for more information on Editing and Deleting a moment.

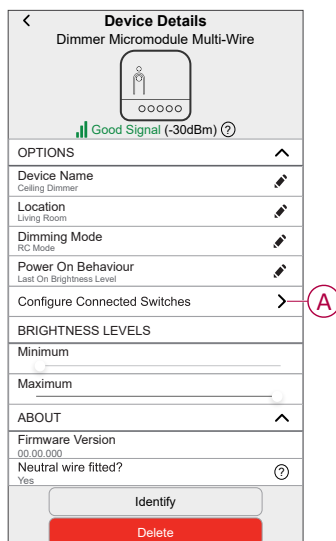
- ☐ [Editing a moment, page 34](#)
- ☐ [Deleting a moment, page 35](#)

Disabling Connected Switches

You can disable the mechanical push-button switches, if it is configured with a moment or with switching/dimming functions.

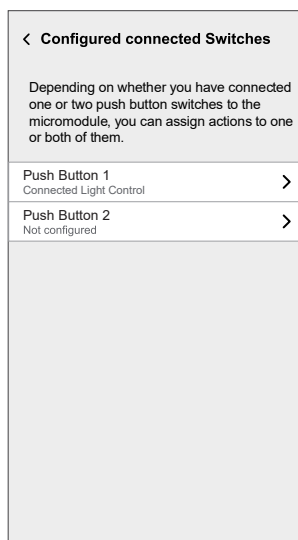
1. On the Home screen, tap .

2. Tap **Devices > Micromodule - Dimmer > Configure Connected switches** (A).

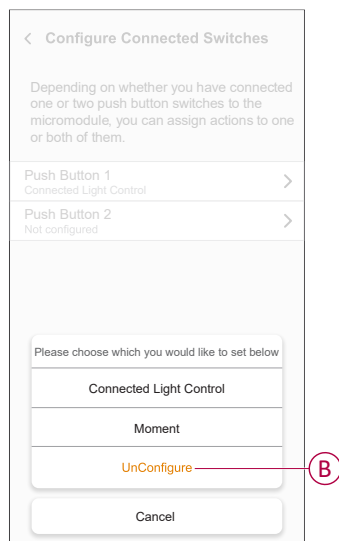


3. Select the push button which you want to disable.

- **Push Button 1**
- **Push Button 2**




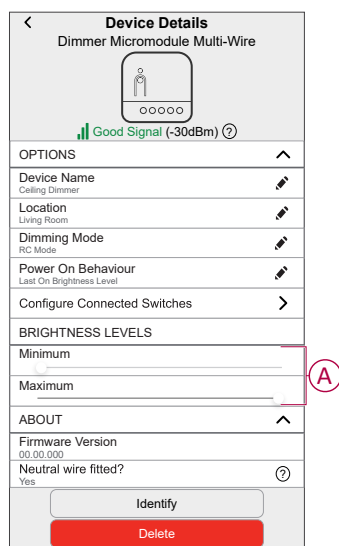
4. Tap **Unconfigure** (B) from the menu, then tap **Yes I'm sure** to confirm and disable the push-button switch.



Setting Brightness level

Using the Wiser Home app, you can set the minimum and maximum brightness level.

1. On the Home screen, tap .
2. Tap **Devices > Micromodule Dimmer**.
3. Drag the slider bar to increase or decrease the **Minimum Brightness** and **Maximum Brightness** (A).

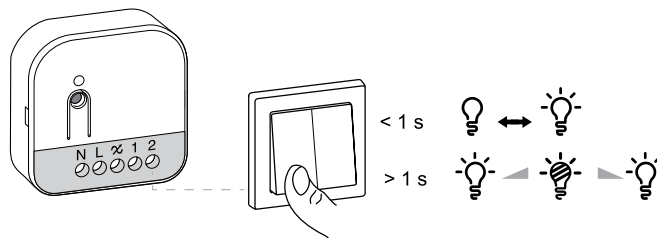


Using the device

Manual operation

When the dimmer is connected to a mechanical push button, the connected lighting devices can be controlled manually.

- Short press the mechanical push button-1 to turn on/off the light.
- Press and hold the mechanical push button-1 to adjust the dimming level of the light.

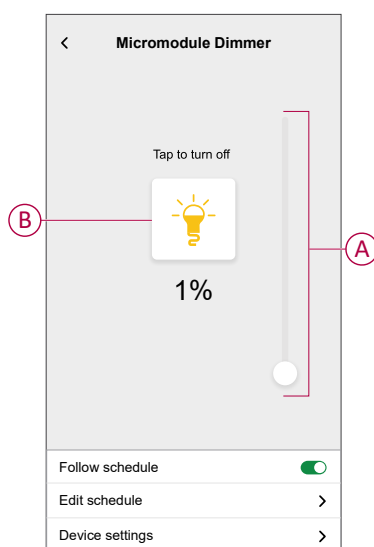



NOTE: Some lamps have a starting point. When you turn on the lamp at a low brightness, it quickly gets very bright and then goes back to the lower brightness automatically. This is the behaviour of the lamp and the dimmer can't change it.

Adjusting the brightness level using app

By using the Wiser Home app, increase/decrease the brightness level in the dimmer.

1. Go to the **Control** tab, tap **All** devices or the room tab where the dimmer is located.
2. On the Device Control Screen, drag the sliding bar up/down to increase/decrease the brightness (A).




TIP: You can also turn on/off the dimmer on the Device Control Screen, tap  (B) to turn on/off.

NOTE: Some lamps have a starting point. When you turn on the lamp at a low brightness, it quickly gets very bright and then goes back to the lower brightness automatically. This is the behaviour of the lamp and the dimmer can't change it.

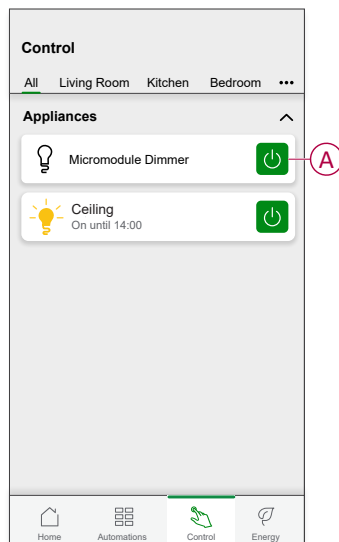
Turning On/Off dimmer using app

Using the Wiser Home app, you can turn on/off the dimmer remotely.

1. Go to the **Control** tab, tap **All** devices or the room tab where the dimmer is located.

2. Tap  (A) to turn on/off.

TIP: You can also turn the device On/Off when you add it to your **Favourite**. To know more about **Favourite**, refer to the **Managing Favourites** topic in the respective System User Guide.





Schedule


You can set up schedules to specify the times at which a state of the device changes.

Setting up a schedule

The dimmer can be fully controlled by a schedule. Once the schedule is set, the dimmer operates at a given time.



1. On the **Home** screen, tap .
2. Go to **Schedules** >  to create a schedule.
3. Enter the name of the schedule (A).
4. In the **TYPE** menu, select **Lights** (B).
5. In the **APPLIES TO** menu, select **Dimmer** (C) from the listed devices.

6. Tap **Create** to setup events.


7. Under **EVENTS** menu, select a day and then tap  to add an event such as **STATE** (lights Off or dimming level in %) and **WHEN** (sunrise/sunset or specific time range).

8. Tap **Set** to save the schedule.

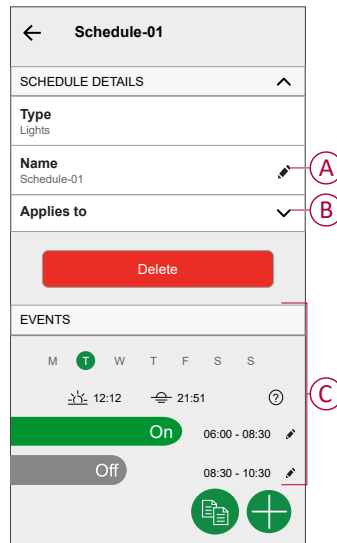
TIP:

- You can add multiple schedules based on your requirement. Select days, tap , set ON/OFF state and time.
- You can copy the existing schedule to another schedule or to the days of your choice. Tap .
 - Tap **Schedule** and select an existing schedule and tap **Copy**.
 - Tap **Day** and select the days you want to assign and tap **Copy**.
- When the schedule begins, you can see the **until time** on the **Control** tab under the device name.


Editing a schedule

1. On the **Home** screen, tap **Automations**  > **Schedules**.
2. Tap the schedule you want to edit.


3. Tap the **SCHEDULE DETAILS** and you can do the following actions:
 - Rename the schedule (A).
 - Within the **Applies to** (B) menu, you have the option to select from the listed devices or deselect those that are already selected.



NOTE: When the above changes are edited, the schedule is saved automatically.

4. Under the **EVENTS** (C) menu, you can do the following actions:
 - Tap  to update an event, such as **STATE** (lights Off or dimming level in %), **WHEN** (sunrise/sunset or a specific time range), and you can also delete an event.
 - Tap **Set** to save the schedule.

Deleting a schedule



1. On the **Home** screen, tap **Automations**  > **Schedules**.
2. Tap the schedule you want to delete.
3. Tap **SCHEDULE DETAILS**, tap **Delete**, and then select **OK**.


Moments

Moment allows you to group multiple actions that are usually performed together. By using the Wiser Home app, you can create moments based on your needs.

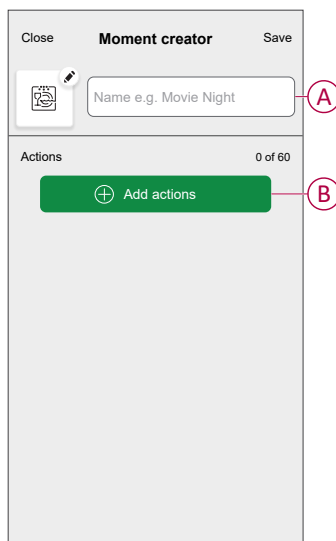
Creating a moment

Moment allows you to group multiple actions that are usually performed together. By using the Wiser Home app, you can create moments based on your needs. To create a moment:

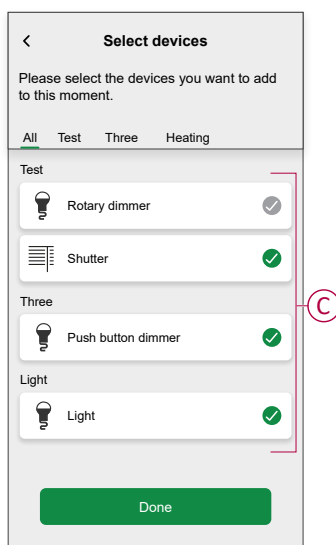
1. On the **Home** screen, tap  > **Moments** > .
2. Enter the name of the moment (A).

TIP: You can choose the cover image that represents your moment by tapping .

3. Tap **Add actions** (B) to select the list of devices.




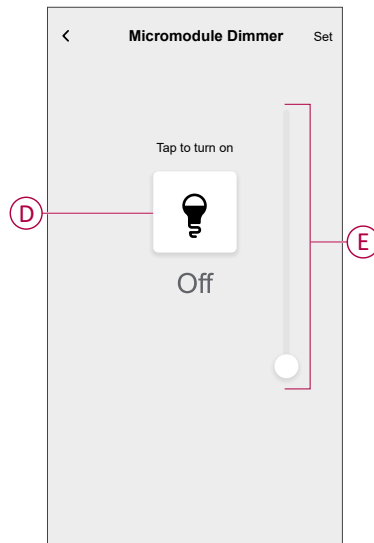
4. Select the devices (C) you want to add in the moment and tap **Done**.



5. Once all the devices are selected, tap **Done**.

6. On the **Moment creator** page, tap the device to set the condition. For example, select Micromodule dimmer.


- Tap  (D) to turn on.
- Drag the sliding bar up/down to increase/decrease the brightness (E) and tap **Set** on the upper right corner.





7. After setting all conditions, tap **Save**.

Once the moment is saved, it will appear on the **Moments** tab. Tap on the moment to enable it.




TIP: If you want to see the created moments on the **Home** screen, go to

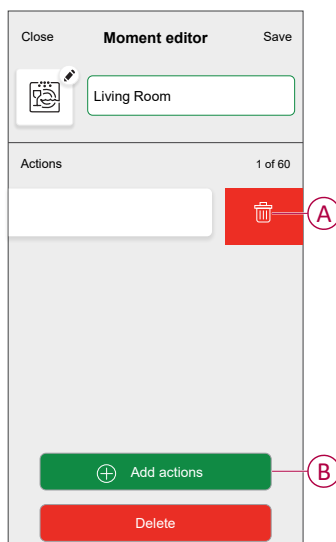
Home >  > **Home Screen** > **Moments**. Enable the toggle button to view moments on the **Home** screen. For more details, refer to the respective System User Guide.

Editing a moment

1. On the **Home** screen, tap **Automations** .
2. Go to **Moments**, locate the moment you want to edit and tap .



3. On the **Moment editor** page, you can perform following changes:

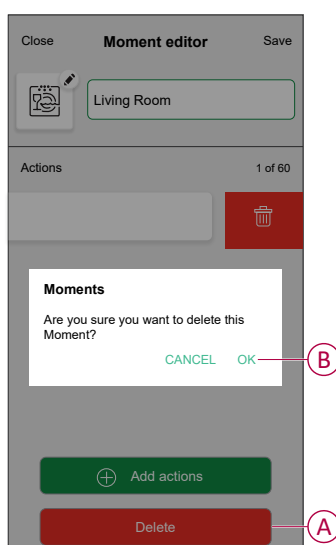
- Change the icon .
- Rename the moment.
- Tap each action to change the settings.
 - To remove an action, slide the action to the left and then tap  (A) to delete it.
 - Tap  **Add actions** (B) to add new action.



4. Tap **Save** to save the changes.

Deleting a moment



1. On the **Home** screen, tap **Automations** .
2. Go to **Moments**, locate the moment you want to delete and tap .
3. On the Moment editor page, tap **Delete** (A) and then tap **OK** (B).




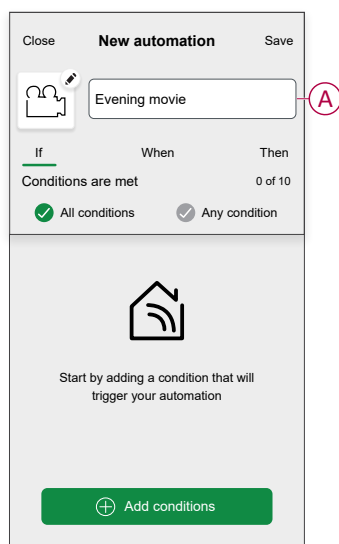
Automation

An automation allows you to trigger an action automatically or at scheduled times. By using the Wiser Home app, you can create automations based on your needs. This example demonstrates how a device works when the condition is met.

Creating an automation

1. On the **Home** screen, tap .
2. Go to **Automation** and then tap  to create an automation.
3. Enter the name of the automation (A) and select any of the following conditions to trigger an automation.
 - **All conditions:** All conditions must be met to trigger an automation.
 - **Any condition:** Any one of the condition must be met to trigger an automation.

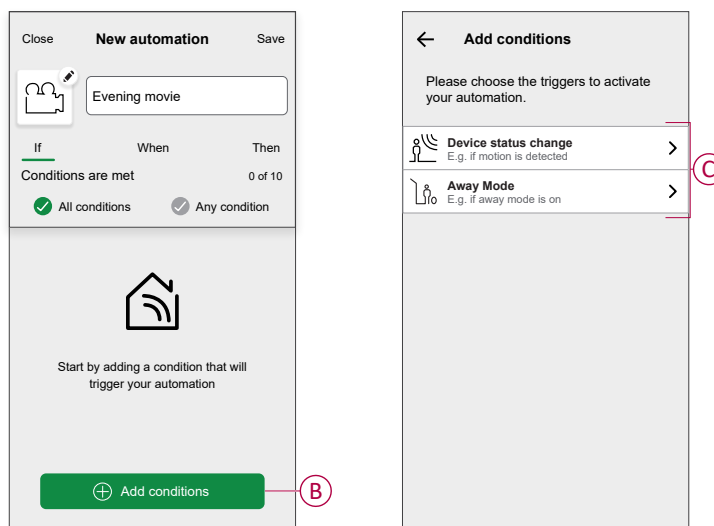
TIP: You can choose the cover image that represents your automation by tapping .



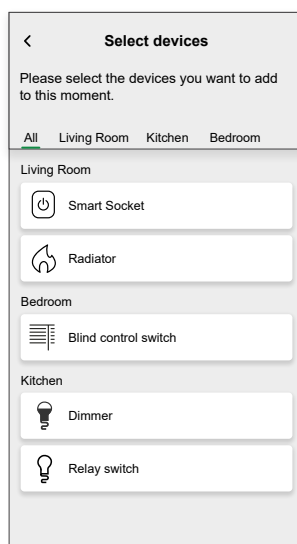
4. Tap **Add conditions** (B) and select any of the following (C).

- **Device status change** (Select the device): An automation will be triggered based on a device status, such as the opening of a shutter or the detection of movement by a motion sensor.
- **Away Mode** (Enable or Disable): Away mode can also trigger an automation to turn on the lights, close the shutter etc. For more information about **Away Mode**, refer to the system user guide.

NOTE: Maximum 10 conditions can be added.



- a. In this example, we will select **Device status change** and choose a device to set the condition. Then, we will select the state of the device that will trigger the automation, such as the closed state of a blind control switch.



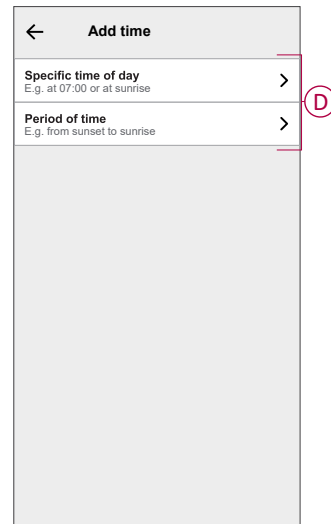
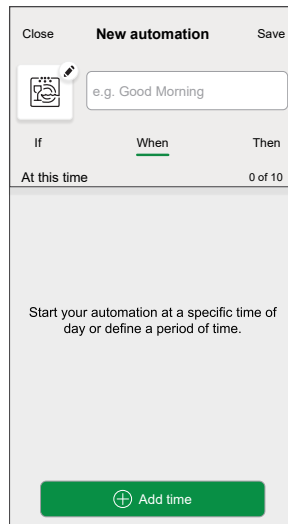
- b. After selecting the device, tap **Set** on the upper right corner.

TIP: If you want to change the condition, swipe it to the left and tap the bin icon. Then add a new condition with the required parameters.

5. To start your automation at a particular time, tap **When > Add time** and select any of the following (D):

NOTE: Maximum 10 time entries can be added.

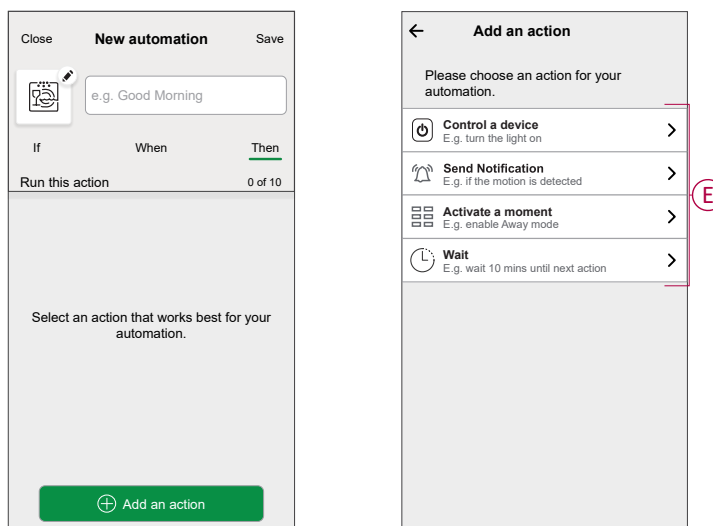
- **Specific time of day** - The automation will trigger at a specific time of the day, such as at sunrise, sunset, or at 8:00 AM.
- **Period of time** - The automation will be trigger during time periods such as from sunrise to sunset, or sunset to sunrise, or from 8:00 AM to 5:00 PM.



6. To add an action, tap **Then > Add an action** and select any of the following (E):

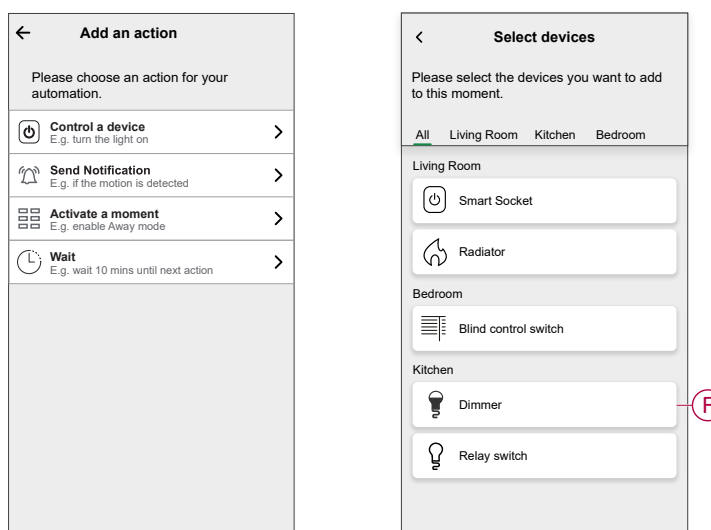
NOTE: Maximum 10 actions can be added.

- **Control a device** - Select the device and set the desired state of the device.
- **Send notification** - You will be notified if the condition is met.
- **Activate a moment** - Select a Moment to activate during the automation.
- **Wait** - This option allows you to add a delay in an automation sequence. You can set the wait time in increments of 1 hour and 1 minute, up to a maximum of 24 hours. This feature is useful for delaying actions within an automation.

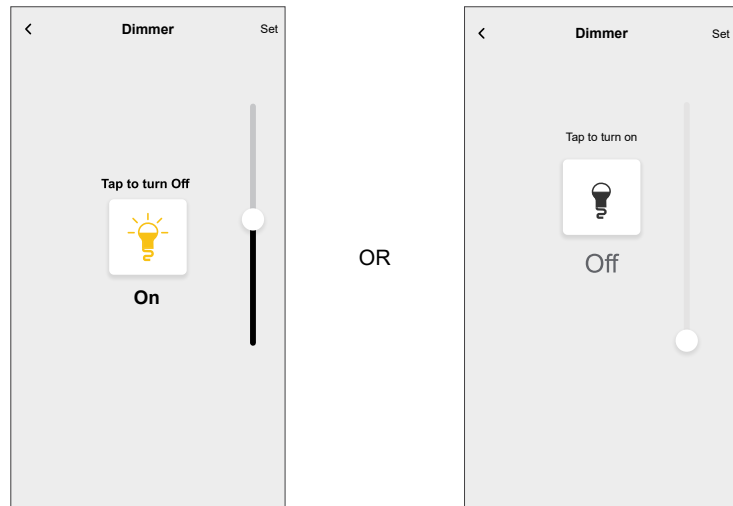


- a. In this example, we will initially select **Control a device** and select **Dimmer (F)** as the device to trigger an action, later, we will select for the **Wait** option to add a delay in the automation.

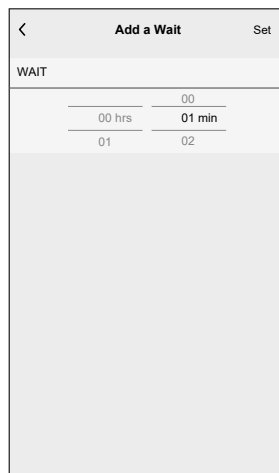
IMPORTANT: You cannot select the same device that you selected for **Add conditions** in Step 4. The device should be different.



- b. Set the state, such as increase/decrease the dimmer brightness or switching the dimmer On/Off. Then, tap **Set** located on the upper right corner.

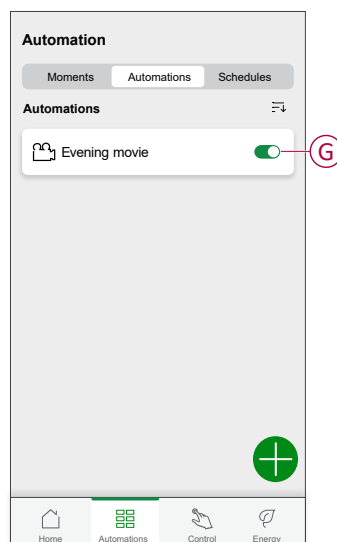


- c. Again, tap **Add an action** and select **Wait** option.
- d. Scroll through the minutes and set the wait time to 1 minute. Then, tap **Set** located on the upper right corner.







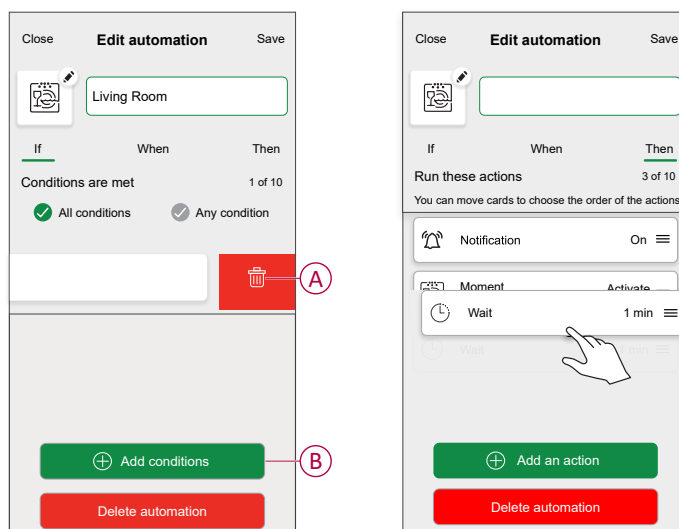
7. Tap **Save**.

The saved Automation is displayed on the **Automation** page. Tap the toggle switch (G) on the Automation page to enable/disable the Automation.




Editing an automation

1. On the **Home** screen, tap **Automations** .
2. Go to **Automation**, tap the automation you want to edit.
3. On the **Edit automation** page, you can perform following changes:
 - Change the icon .
 - Rename the automation.
 - Tap each condition to change the settings.
 - To remove a condition, slide the condition towards left and then tap  (A) to delete it.
 - Tap  **Add conditions** (B) to add new condition.
 - To change the order of actions, tap the **Then** option, and hold an action then drag and drop to the desired position.

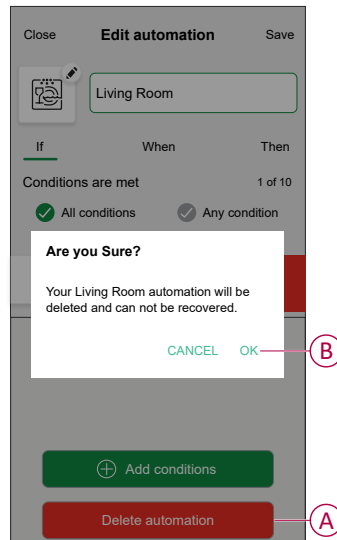


4. Tap **Save** to save the changes.

Deleting an automation

1. On the **Home** screen, tap **Automations** .
2. Go to **Automation**, tap the automation you want to delete.

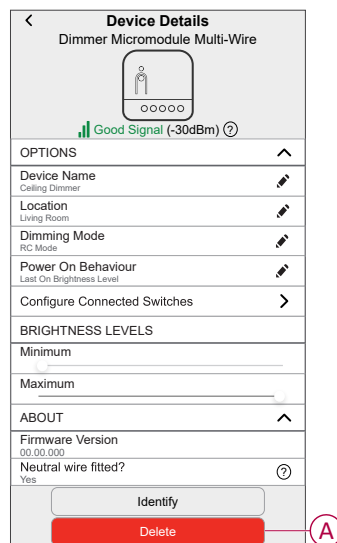
- On the **Edit automation** page, tap **Delete automation** (A) and read the confirmation message and then tap **OK** (B).



Removing the device from Wiser system

Using the Wiser app, you can remove the dimmer from the system.

- On the Home screen, tap .
- Tap **Devices > Micromodule Dimmer > Delete** (A).



NOTE:

- Removing the device will reset the dimmer. After reset the LED turns amber indicating that the dimmer is ready to pair with another network.
- If there is a problem while pairing or resetting the dimmer, refer to [Resetting the device](#), page 42.

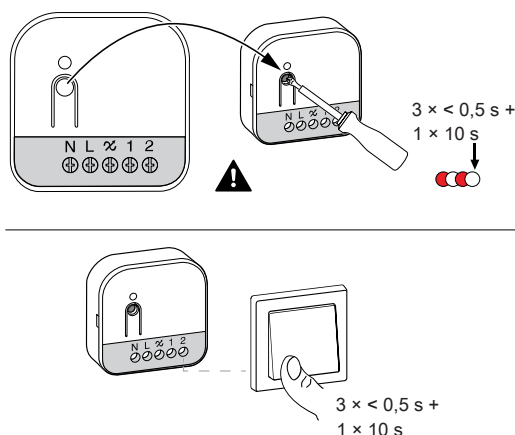
Resetting the device

You can reset the device to factory default manually.

1. Short press the Set (Setup/Reset) button 3 times (< 0.5 s) and then long press the Set (Setup/Reset) button once (> 10 s).

or

Short press the mechanical push button-1 for 3 times and then long press the push button once for 10 s.





2. After 10 s, LED starts blinking red, then release the push-button.

NOTE: All configuration data, user data, and network data are deleted.



The LED stops blinking upon successful reset of the device.
The device restarts and blinks green for a few seconds.

LED indication

Pairing the device

User Action	LED Indication	Status
Short press the set (setup/reset) button or push button 3 times.	LED blinks orange once per second. 	Pairing mode is active for 30 seconds. When pairing is completed, LED glows green for a few seconds before turning off. 

Resetting the device

User Action	LED Indication	Status
Short press the set (setup/reset) button or push button 3 times and hold it down once for > 10 s.	LED blinks red once per second. 	The device is in reset mode. The device then restarts and LED turns orange indicating that the device is ready for pairing. 









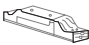


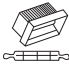


Troubleshooting

Symptom	Solution
Dimming up not possible.	<ul style="list-style-type: none"> • Reduce/increase the load. • Allow the dimmer to cool in case of overheating. • Change the load (if the load is incompatible with the dimmer).
Switching on not possible.	<ul style="list-style-type: none"> • Allow the dimmer to cool in case of overheating. • Reduce the load. • Change the load. • Check the wiring between the push button and the dimmer.
Flickering at minimum brightness.	<ul style="list-style-type: none"> • Increase the minimum brightness (if flickering still persists, install a Load Compensation Module, CCT90501).

Symptom	Solution
	<ul style="list-style-type: none"> Change the load (if the minimum brightness is insufficient). Set RL LED mode (it is advised to use 10 % of nominal load to avoid overheating of the dimmer).
Flickering at maximum brightness.	<ul style="list-style-type: none"> Reduce the maximum brightness. Change the load.
Flickering at normal brightness	<ul style="list-style-type: none"> Change the load. Set RL LED mode (it is advised to use 10 % of nominal load to avoid overheating of the dimmer).
Only slight dimming capability	<ul style="list-style-type: none"> Change dimming range. Set RL LED mode (it is advised to use 10 % of nominal load to avoid overheating of the dimmer). Change the load (if the load is incompatible with the dimmer).
The device is not ready to pair after the device is removed from the app.	Reset to factory default settings, refer to Resetting the device manually , page 42.

Technical data

Nominal power

Load type	Load name	Load value	
		2 wire (without neutral)	3 wire (with neutral)
	LED	5 - 200 W (max. 0.8 A)  RC 5 - 80 W (max. 0.5 A)  RL	0 - 200 W (max. 0.8 A)  RC 0 - 80 W (max. 0.5 A)  RL
	Incandescent lamp	20 - 300 W  RC	0 - 300 W  RC
	Electronic step-down converter	20 - 300 VA  RC	0 - 300 VA  RC
	Halogen lamp	20 - 300 W  RC	20 - 300 W  RC

Nominal voltage	AC 230 V, 50 Hz	
Dimming channel	1	
Standby	< 0.25 W	
Operating Temperature	- 5 °C to 35 °C	
Neutral conductor	Recommended	
Connecting terminals	Tightening torque	0.5 Nm
	Solid conductor	1 x 0.75 - 2.5 mm ²
	Stranded conductor intended for fixed installation:	1 x 0.75 - 2.5 mm ²
Extension connection	Max. 10 mechanical push buttons	
Length of all cable sections	Max. 50 m for 3-wire NYM cable	
Fuse protection	16 A circuit breaker	
Operating frequency	2405 - 2480 MHz	
Max. radio-frequency power transmitted	<10 mW	
IP rating	IP20	

Product dimensions (H x W x D)	45 x 45 x 18.4 mm
Communication protocol	Zigbee 3.0 certified

Compliance

Product Environmental Data

Find and download comprehensive environmental data about your products, including RoHS compliance and REACH declarations as well as Product Environmental Profile (PEP), End-of-Life instructions (EOL) and much more.

<https://www.se.com/myschneider>



General information about Schneider Environmental Data Program

Click the link below to read about Schneider Electric's Environmental Data Program.

<https://www.se.com/ww/en/about-us/sustainability/environmental-data-program/>



EU Declaration of Conformity

Hereby, Schneider Electric Industries, declares that this product is in compliance with the essential requirements and other relevant provisions of RADIO DIRECTIVE 2014/53/EU. Declaration of conformity can be downloaded on se.com/docs.

Trademarks

This guide makes reference to system and brand names that are trademarks of their relevant owners.

- Zigbee® is a registered trademark of the Connectivity Standards Alliance.
- Apple® and App Store® are brand names or registered trademarks of Apple Inc.
- Google Play™ Store and Android™ are brand names or registered trademarks of Google Inc.
- Wi-Fi® is a registered trademark of Wi-Fi Alliance®.
- Wiser™ is a trademark and the property of Schneider Electric, its subsidiaries and affiliated companies.

Other brands and registered trademarks are the property of their respective owners.

Printed in:
Schneider Electric
35 rue Joseph Monier
92500 Rueil Malmaison - France
+ 33 (0) 1 41 29 70 00

Schneider Electric
35 rue Joseph Monier
92500 Rueil Malmaison
France

+ 33 (0) 1 41 29 70 00

www.se.com

As standards, specifications, and design change from time to time, please ask for confirmation of the information given in this publication.

© 2024 – 2025 Schneider Electric. All rights reserved.

DUG_Multiwire Puck Dimmer_WH-02