

Wiser Smoke Alarm - 230 V

Wiser Home Device user guide

Information about features and functionality of the device.

10/2025



Legal Information

The information provided in this document contains general descriptions, technical characteristics and/or recommendations related to products/solutions.

This document is not intended as a substitute for a detailed study or operational and site-specific development or schematic plan. It is not to be used for determining suitability or reliability of the products/solutions for specific user applications. It is the duty of any such user to perform or have any professional expert of its choice (integrator, specifier or the like) perform the appropriate and comprehensive risk analysis, evaluation and testing of the products/solutions with respect to the relevant specific application or use thereof.

The Schneider Electric brand and any trademarks of Schneider Electric SE and its subsidiaries referred to in this document are the property of Schneider Electric SE or its subsidiaries. All other brands may be trademarks of their respective owner.

This document and its content are protected under applicable copyright laws and provided for informative use only. No part of this document may be reproduced or transmitted in any form or by any means (electronic, mechanical, photocopying, recording, or otherwise), for any purpose, without the prior written permission of Schneider Electric.

Schneider Electric does not grant any right or license for commercial use of the document or its content, except for a non-exclusive and personal license to consult it on an "as is" basis.

Schneider Electric reserves the right to make changes or updates with respect to or in the content of this document or the format thereof, at any time without notice.

To the extent permitted by applicable law, no responsibility or liability is assumed by Schneider Electric and its subsidiaries for any errors or omissions in the informational content of this document, as well as any non-intended use or misuse of the content thereof.

Table of Contents

Safety Information.....	4
About the Document.....	5
Wiser Smoke Alarm 230 V.....	8
About the device.....	8
Installing the device	9
Pairing the device with the Wiser Hub	10
Setting up connection without Wiser Hub.....	14
Interconnecting devices without Wiser Hub	14
Disconnecting a secondary device	15
Testing the device.....	16
Configuring the device	17
Renaming the device	17
Setting the device location	18
Identifying the device	19
Using the device.....	20
Checking the device history	21
Setting LED brightness.....	22
Silencing the device	24
Snoozing the device alerts.....	25
False alarm	26
Creating an automation	26
Removing the device	35
Resetting the device manually	36
Maintenance and cleaning.....	36
LED indications	37
Troubleshooting	38
Technical data	39

Safety Information

Important Information

Read these instructions carefully and look at the equipment to become familiar with the device before trying to install, operate, service, or maintain it. The following special messages may appear throughout this manual or on the equipment to warn of potential hazards or to call attention to information that clarifies or simplifies a procedure.



The addition of either symbol to a “Danger” or “Warning” safety label indicates that an electrical hazard exists which will result in personal injury if the instructions are not followed.



This is the safety alert symbol. It is used to alert you to potential personal injury hazards. Obey all safety messages that accompany this symbol to avoid possible injury or death.

DANGER

DANGER indicates a hazardous situation which, if not avoided, **will result in** death or serious injury.

Failure to follow these instructions will result in death or serious injury.

WARNING

WARNING indicates a hazardous situation which, if not avoided, **could result in** death or serious injury.

CAUTION

CAUTION indicates a hazardous situation which, if not avoided, **could result in** minor or moderate injury.

NOTICE

NOTICE is used to address practices not related to physical injury.

About the Document

Document Scope

This document provides detailed information on the features and functionality of the Wiser Smoke Alarm 230 V, including installation, pairing with the Wiser Hub, configuring settings, and using the device. Additionally, it includes troubleshooting tips, technical data, compliance information, and instructions for resetting the device.

Validity Note

The characteristics of the products described in this document are intended to match the characteristics that are available on www.se.com. As part of our corporate strategy for constant improvement, we may revise the content over time to enhance clarity and accuracy. If you see a difference between the characteristics in this document and the characteristics on www.se.com, consider www.se.com to contain the latest information.

For your safety

DANGER

HAZARD OF ELECTRIC SHOCK, EXPLOSION, OR ARC FLASH

Safe electrical installation must be carried out only by skilled professionals. Skilled professionals must prove profound knowledge in the following areas:

- Connecting to installation networks
- Connecting to several electrical devices
- Laying electrical cables
- Safety standards, local wiring rules and regulations

Failure to follow these instructions will result in death or serious injury.

NOTICE

EQUIPMENT INSTALLATION HAZARD

- Always operate the product in compliance with the specified technical data.
- Keep the installation instruction for the life of the product.

Failure to follow these instructions can result in equipment damage.

WARNING

SEALED BATTERY HAZARD

Do not recharge, disassemble or incinerate the battery.

Failure to follow these instructions can result in death, serious injury, or equipment damage.

General Cybersecurity Information

In recent years, the growing number of networked machines and production plants has seen a corresponding increase in the potential for cyber threats, such as unauthorized access, data breaches, and operational disruptions. You must, therefore, consider all possible cybersecurity measures to help protect assets and systems against such threats.

To help keep your Schneider Electric products secure and protected, it is in your best interest to implement the cybersecurity best practices as described in the [Cybersecurity Best Practices](#) document.

Schneider Electric provides additional information and assistance:

- [Subscribe to the Schneider Electric security newsletter.](#)
- [Visit the Cybersecurity Support Portal web page to:](#)
 - [Find Security Notifications.](#)
 - [Report vulnerabilities and incidents.](#)
- [Visit the Schneider Electric Cybersecurity and Data Protection Posture web page to:](#)
 - [Access the cybersecurity posture.](#)
 - [Learn more about cybersecurity in the cybersecurity academy.](#)
 - [Explore the cybersecurity services from Schneider Electric.](#)

Environmental Data

Find and download comprehensive environmental data about your products, including RoHS compliance and REACH declarations as well as Product Environmental Profile (PEP), End-of-Life instructions (EOLi) and much more.

<https://www.se.com/myschneider>



General information about Schneider Environmental Data Program

Click the link below to read about Schneider Electric's Environmental Data Program.

<https://www.se.com/ww/en/about-us/sustainability/environmental-data-program/>



Declaration of Conformity

Hereby, Schneider Electric Industries SAS, declares that this product is in compliance with the essential requirements and other relevant provisions of RADIO EQUIPMENT DIRECTIVE 2014/53/EU.

Declaration of conformity can be downloaded on:

- <https://www.go2se.com/ref=CCT599501>
- <https://www.go2se.com/ref=CCT599502>

Available Languages of the Document

The document is available in these languages:

- English
- German
- Spanish
- Portuguese
- French
- Danish
- Swedish
- Finnish

Information on Non-Inclusive or Insensitive Terminology

As a responsible, inclusive company, Schneider Electric is constantly updating its communications and products that contain non-inclusive or insensitive terminology. However, despite these efforts, our content may still contain terms that are deemed inappropriate by some customers.

Trademarks

- Wiser™ is a trademark and the property of Schneider Electric, its subsidiaries and affiliated companies.
- Zigbee® is a registered trademark of the Connectivity Standards Alliance.
- Apple® and App Store® are brand names or registered trademarks of Apple Inc.
- Google Play™ Store and Android™ are brand names or registered trademarks of Google Inc.
- Wi-Fi® is a registered trademark of Wi-Fi Alliance®.
- QR Code is a registered trademark of DENSO WAVE INCORPORATED in Japan and other countries.

Other brands and registered trademarks are the property of their respective owners.

Wiser Smoke Alarm 230 V



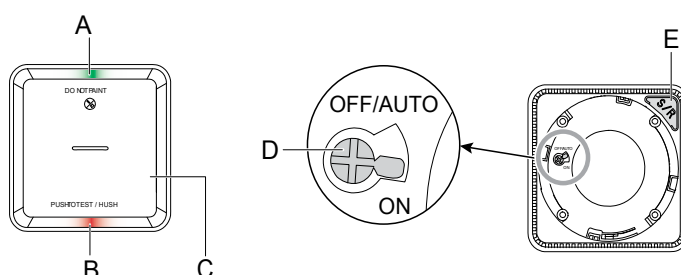
CCT599502
CCT599501

About the device

The Wiser Smoke Alarm 230 V (smoke alarm) uses a photoelectric sensor to detect smoke generated by fire and a temperature sensor that detects heat caused by rapid increase in temperature. It also includes a backup battery that allows the smoke alarm to work if the power supply is disconnected. When connected to the Wiser system, the smoke alarm will send notifications via the Wiser Home app.

Operating elements

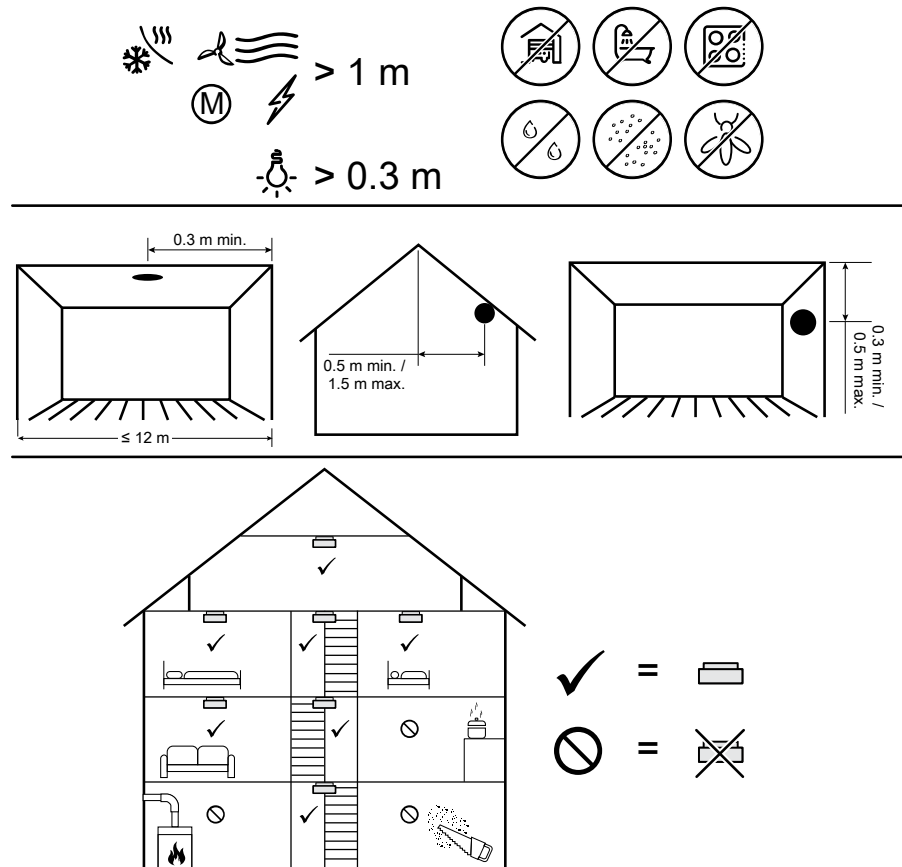
- A. Status LED (Amber, Green and Red LED)
- B. Standby LED (Red LED)
- C. Test/Hush button
- D. Power switch: OFF/Auto*
- E. Setup/Reset button



***OFF/Auto:** In this position the smoke alarm is turned off. When the smoke alarm is mounted on the mounting base, it turns on automatically. When it is removed, it turns off automatically.

Installation location

- Smoke Alarm can be installed on a flat/inclined ceiling.
- Do not install smoke alarms near windows, doors, or ducts.
- Avoid paint, stickers, or other decorations.



Installing the device

Refer to the installation instruction supplied with this product.

See :

- installation instruction (CCT599502)
- installation instruction (CCT599501)

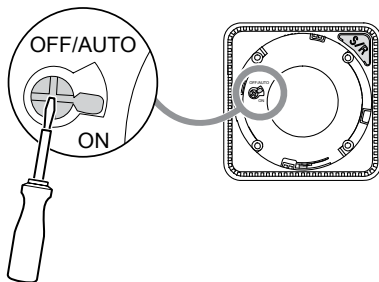
Pairing the device with the Wiser Hub

Using the Wiser Home app, pair your smoke alarm with the **Wiser Hub**.

IMPORTANT: Do not mount the smoke alarm before pairing. The Setup/Reset button and power switch are located on the rear side of the smoke alarm.

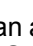
NOTE: When multiple smoke alarms are paired with the same Wiser Hub, a radio frequency (RF) interconnection is automatically created between smoke alarms.

1. Locate the power switch on the rear side of the smoke alarm. Use a screwdriver to turn the power switch to **ON** position.



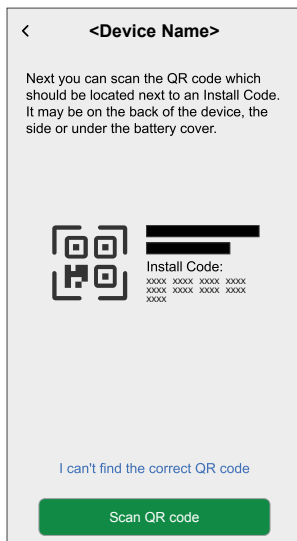
NOTE: When the smoke alarm is mounted on a wall or on the ceiling, the power switch is automatically turned ON.

2. On the Home screen, tap .
3. Tap **Devices** >  > **Safety and Security** > **Smoke Alarm**.

TIP: You can also navigate by tapping **Control** >  > **Safety and Security** > **Smoke Alarm**.

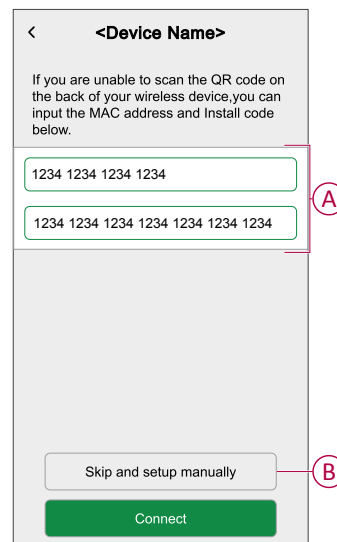
4. Tap **Scan QR code** and allow the Wiser Home app to access your camera. Then, scan the QR code located on the smoke alarm.

NOTE: If you are unable to find the correct QR code, tap **I can't find the correct QR code** to pair the smoke alarm manually and proceed to step 5.

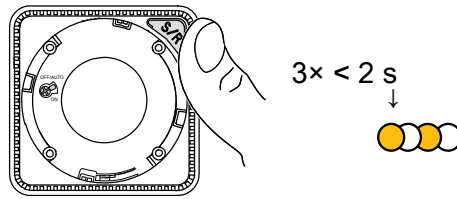


If the QR code is incorrect, a message **Incorrect QR code scanned** will appear. Tap **I can't scan the QR code** and choose one of the following options:

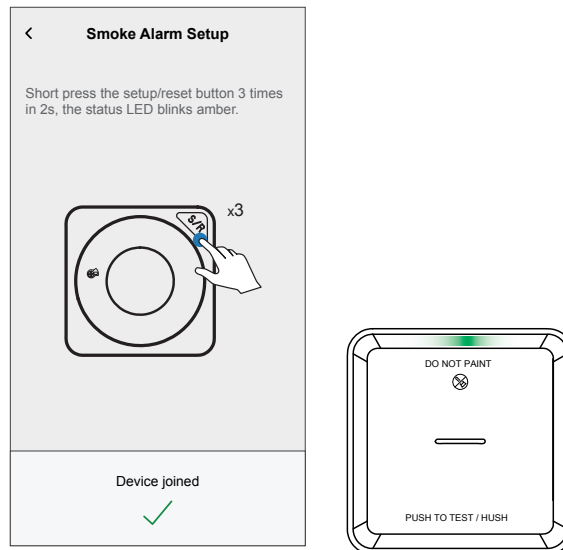
- **(A):** Enter the **Mac Address/EUI-64** and **Install Code**, then tap **Connect**. The app will verify if the Mac Address/EUI-64 and Install code are valid.
- **(B):** Tap this option if you are unable to find the Mac Address/EUI-64 and Install code.



5. Tap **Next**, short press the Setup/Reset button 3 times and make sure that the LED blinks amber.



Wait for a few seconds until the LED turns green and the app confirms that the smoke alarm has joined.

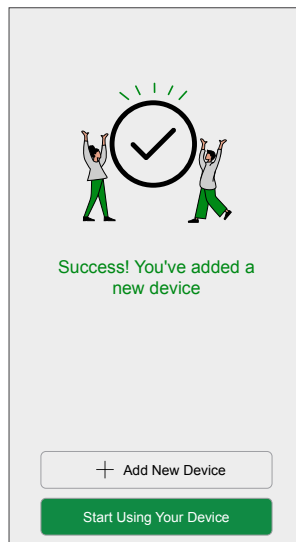


6. Tap **Next** and assign the device to a new room or an existing room and tap **Submit**.

IMPORTANT: The next screen shows the **Device Settings** page, where you have the option to configure the settings during the pairing process or at a later time. If you prefer to configure it later, tap **Submit**. For more information on device settings, refer to [Configuring the device](#), page 17 section.

After you pair the smoke alarm, a success screen appears with the following options:

- **+ Add New Device:** Tap to continue pairing more devices.
- **Start Using Your Device:** Tap to start using the paired device.



NOTE: The success screen appears only if you are logged in as a **Home Owner**.

Now, you can see the newly added sensor on the **Control** tab under the **All** and **Room** tabs.

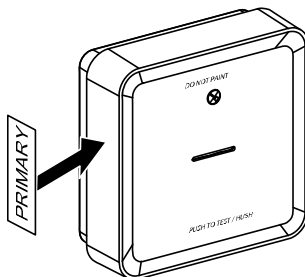
Setting up connection without Wiser Hub

Interconnecting devices without Wiser Hub

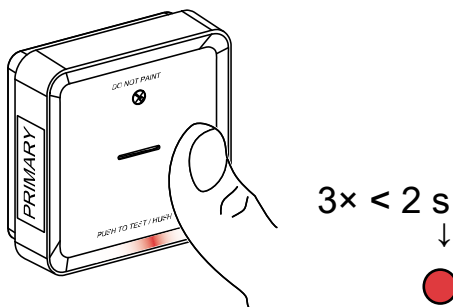
The smoke alarms can be connected directly to each other via RF connections even without a Wiser Hub network.

IMPORTANT: Turn the power switch to **ON** position on all the devices.

1. Identify a smoke alarm and mark it as **Primary** with a label supplied. Other smoke alarms are considered as **Secondary**.



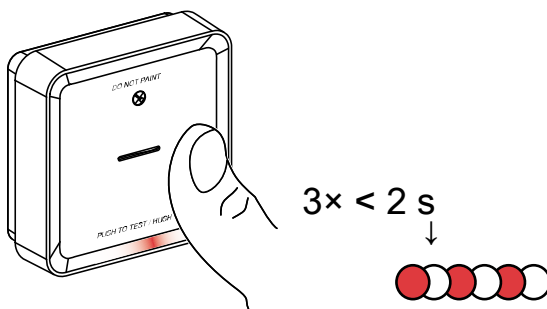
2. Short press the Test/Hush button 3 times within 2 s on the primary smoke alarm.



The Standby LED turns on for 30 s once it is in pairing mode.

3. Identify a Secondary smoke alarm and short press the Test/Hush button 3 times within 2 s.

The Standby LED blinks 3 times on both Primary and Secondary smoke alarms indicating a successful RF connection. Then on the Primary smoke alarm, the Standby LED again turns on for 30 s.



Repeat the step 3 on all Secondary smoke alarms.

NOTE: To exit from pairing mode, short press ($< 0,5$ s) the Test/Hush button 3 times on the Primary smoke alarm. The Standby LED turns off indicating that the Primary smoke alarm is not in pairing mode.

IMPORTANT: To make sure you have correct interconnection, perform an interconnection test on all smoke alarms before and after installation. Refer testing the interconnected device(s).

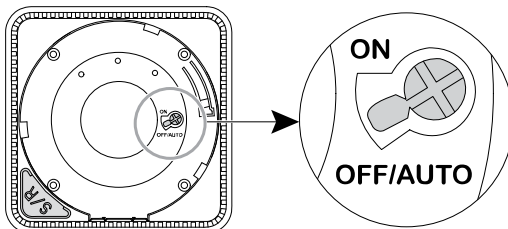
Disconnecting a secondary device

Remove a Secondary smoke alarm from the mounting base (See "Removing a device from the mounting base" in the instruction manual).

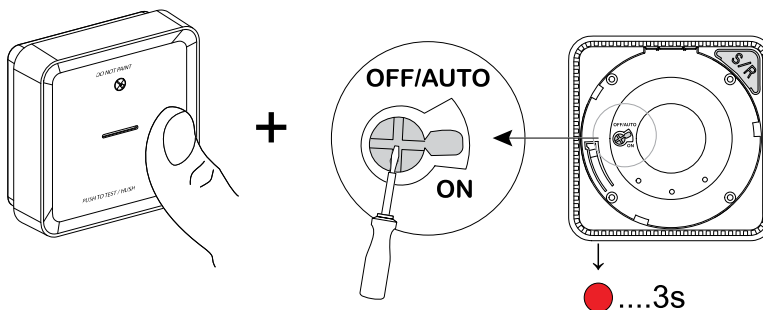
NOTE:

- Do not remove the Primary smoke alarm.
- Read the following steps before disconnecting a Secondary smoke alarm.

1. Make sure that the power switch is in OFF/AUTO position.

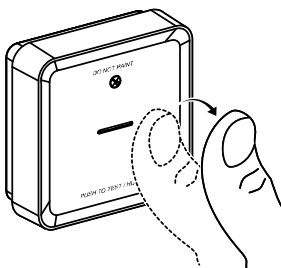


2. Press and hold the Test/Hush button and simultaneously turn the power switch to ON position.

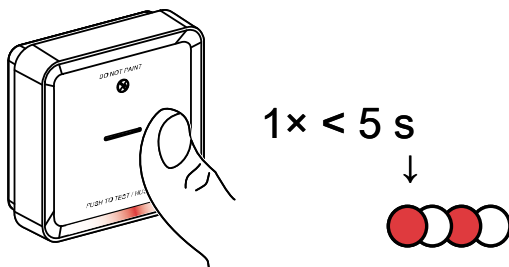


The Standby LED turns on for 3 s.

3. Continue to hold the Test/Hush button until the Standby LED turns off. Then release the Test/Hush button.



4. Short press the Test/Hush button when the Standby LED is again on for 3 s.



The Standby LED blinks for 5 s indicating disconnecting of RF interconnection and then the Status LED blinks green for 7 times.

IMPORTANT:

- When the Secondary smoke alarm is successfully disconnected, make sure to turn the power switch to OFF/ AUTO position.
- Conduct an interconnection test on all remaining smoke alarms when disconnecting is done. Refer, testing the interconnected device(s).

Testing the device

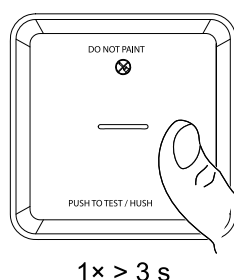
The smoke alarm has a test mode that helps ensure the proper operation. It is recommended to test the smoke alarm once a month. If the smoke alarm is installed in a mobile home, it is recommended to test the smoke alarm weekly and before every journey.

NOTE: Using Wiser app you can set the monthly reminder for test alarm in settings.

Testing the individual device

IMPORTANT: Test the smoke alarm once a month to ensure proper operation.

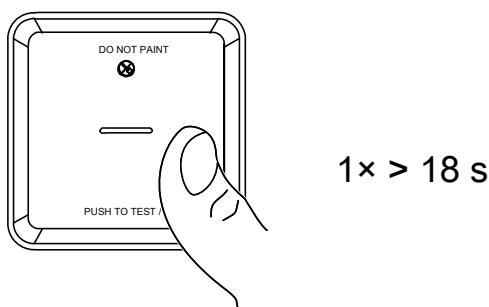
Press the Test/Hush button on each smoke alarm for more than 3 s until an alarm sounds off. If the test alarm does not sound, then the smoke alarm is not connected to power supply.



Testing the interconnected device(s)

It is possible to test all the smoke alarms simultaneously in an interconnected network with one operation.

1. Select any interconnected smoke alarm.
2. Press and hold the Test/Hush button for more than 18 s until an alarm goes off on all interconnected smoke alarms.




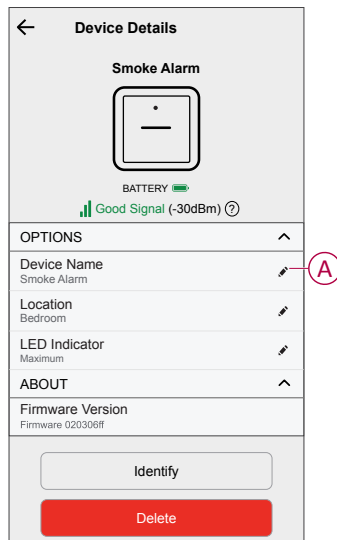
If there is no alarm triggered on the interconnected smoke alarms, make sure that the wireless interconnection setup is correct. Also the distance between each smoke alarm is within the specification.

NOTE: The triggered alarm on the interconnected smoke alarms remains for a longer time even if you release the Test/Hush button.

Configuring the device



Renaming the device

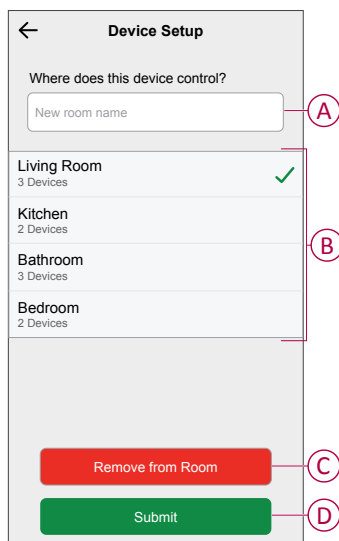
1. On the Home screen, tap .
2. Tap **Devices > Smoke Alarm > Device Name (A)**.



Setting the device location

You can add your device to any room (such as bedroom, living room, dining room etc.).

1. On the **Home** screen, tap .
2. Tap **Devices**, select the device from the list for which you wish to change the location.
3. Tap **Location**  to open setup screen.
4. On the **Device Setup** screen, you can enter **New room name** (A) or select an existing room from the list (B).





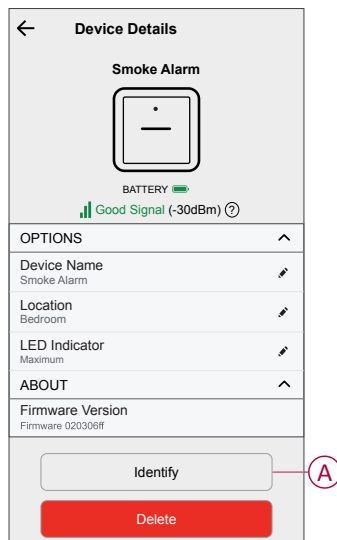
TIP: If the device is already assigned, you can remove it from the existing room. Tap **Remove from Room** (C).

5. Once changes are done, tap **Submit** (D).

Identifying the device

Using the Wiser Home app, identify the device among the smoke alarms available in a home.

1. On the Home screen, tap .
2. Tap **Devices** >  > **Identify** (A).



NOTE: The LED on the smoke alarm may take up to 60 minutes to blink and identify. This delay depends on when the smoke alarm communicates with the hub during its regular.

3. Tap **OK** to finish identifying the device.

Using the device

The Control Panel of the smoke alarm allows you to view the current state of the smoke alarm and allow you to access the history and settings.

1. On the **Control** tab, tap **All** devices or a room tab where the smoke alarm is located.
2. On the Smoke Alarm control panel page, you can see the following:

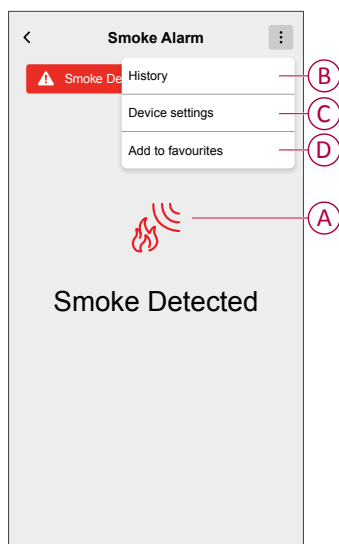
- Current state of the smoke alarm (A)
- History (B)

NOTE: The history page gives information about the smoke alarm (date, time, and type of alarm detected, for more information, refer to [Checking the device history](#), page 21).

- Device settings (C)

NOTE: The smoke alarm setting page gives information about setting the LED brightness of the smoke alarm, for more information, refer to [LED brightness settings](#), page 22.

- Add to favourites (D)



Checking the device history

Using the Wiser Home app, you can view the smoke and high temperature detection by accessing the smoke alarm history.

NOTE: All device history is stored in the cloud. When the cloud connection is lost, the device history will disappear.

1. On the **Control** tab, tap **All** devices or a room tab where the Smoke Alarm is located.
2. On the device control panel page, tap **History**.

In the **History** page, you can see the date, time, and type of alarm detected.

NOTE: Device history can be stored for a maximum duration of 90 days.

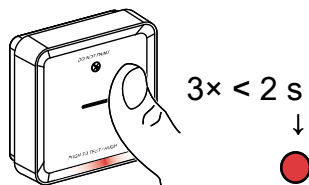
< History	
TODAY	
09:42:42	Temperature Alarm
09:55:44	Smoke Alarm
YESTERDAY	
10:42:55	Remote Alarm
11:22:45	Hush Mode On
11:32:55	Hush Mode Off
01ST NOV 2021	
11:00:55	Fault Warning
12:22:55	Smoke Alarm
12:55:44	Tamper Alarm
02ND NOV 2021	
07:00:55	Temperature Alarm
08:22:55	Battery Defect
09:55:44	Smoke Alarm

Setting LED brightness

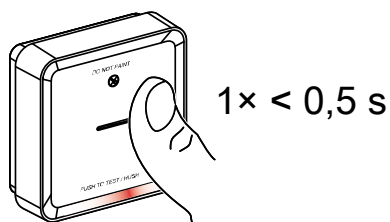
You can change the LED brightness to minimum and maximum manually and also using the Wiser Home app.

Changing the LED brightness manually

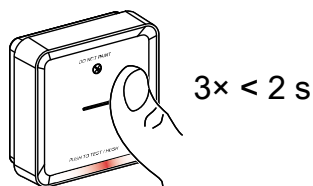
1. When the smoke alarm is in standby mode, short press the Test/Hush button 3 times within 2 s.




2. When the Red LED is On, short press the Test/Hush button to switch between Min. and Max. LED brightness.

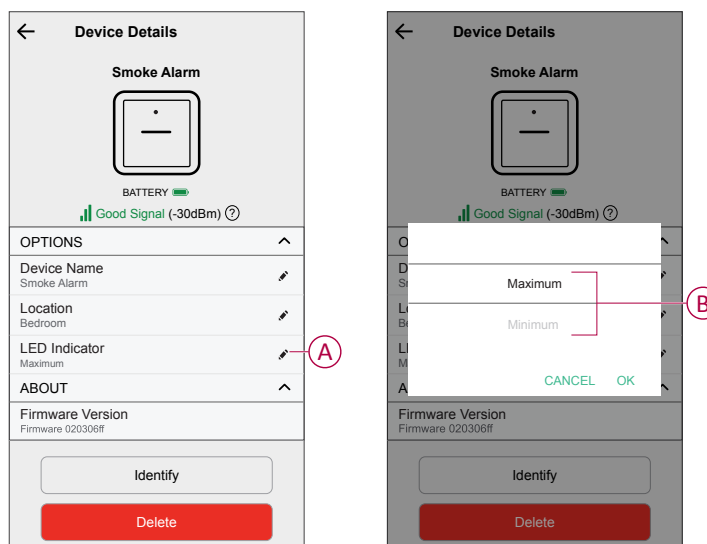


3. Again short press the Test/Hush button 3 times within 2 s to store the adjusted brightness level. Otherwise, you can wait 30 s for the standby LED to turn off, then the brightness level will be saved.



Changing the LED brightness using app

1. On the Home screen, tap .
2. Tap **Devices > Smoke Alarm > LED Indicator (A)**.
3. Short press **Setup/Reset (S/R)** button on the device to wake it before changing the brightness level.
4. In the app, select one of the following (B):
 - **Maximum**
 - **Minimum**
5. Tap **OK**.



Silencing the device

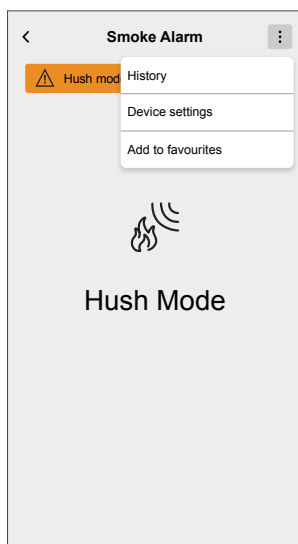
Hush the smoke alarms

During an alarm event, first identify the smoke alarm/s that detected smoke, these will have Red LEDs blinking. Then short press the Test/Hush button on the smoke alarm to stop the alarm.

IMPORTANT: In hush mode, the smoke alarm will not detect smoke/high temperature for 10 minutes. After 10 minutes the smoke alarm resumes to normal operation. During this time, the Standby LED blinks once every 8 s.

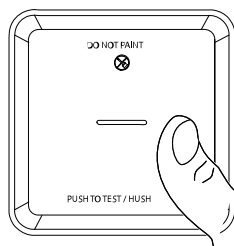
- If smoke is detected while the alarm is in hush mode, high-temperature detection remains active.
- If high temperature is detected while the alarm is in hush mode, smoke detection remains active.
- If both smoke and high temperature are detected simultaneously and the alarm is set to hush mode, both detections are disabled for 10 minutes.
- In interconnected systems, if multiple alarms show blinking red LEDs and are actively alarming, briefly press the Test/Hush button on each device. All alarms will silence within 5 to 10 seconds.

NOTE: Wait for 10 minutes before performing any test to avoid malfunctioning of the smoke alarm. Once the device is set to Hush Mode the status can be checked in Wiser Home app.



Temporarily disabling smoke detection

To temporarily disable the smoke detection of a smoke alarm, short press the Test/Hush button once when the smoke alarm is in Standby mode. The smoke alarm will not detect smoke for 10 minutes. During this mode the Standby LED blinks once every 8 s.



1 × < 3 s

NOTE: The temperature sensor remains active even when the smoke detection is disabled.

Snoozing the device alerts

Low battery

When the battery is low, the Standby LED blinks every 48 s, together with a beep. You can snooze the low battery indication for 10 hours by short pressing the Test/Hush button once.

IMPORTANT: The user must replace the device within 30 days after the first alert.

Fault detection

When a smoke alarm fault is detected, 2 beeps occur every 48 s together with blinking Standby LED. You can snooze the indication for 10 hours by short pressing the Test/Hush button once. Refer troubleshooting, page 38.

Alarm memory

In an interconnected group, the Standby LED on the triggered device blinks once every 2 s for 72 hours after the alarm has stopped. This allows the user to identify the device that was triggered by smoke/high temperature. Short press the Test/Hush button once to snooze the blinking LED for 10 hours.

False alarm



In an event of a false alarm in an interconnected group, it is important to identify the triggering device(s) by finding the smoke alarms with flashing Red LED every 2 s, or by using alarm history log in the app.

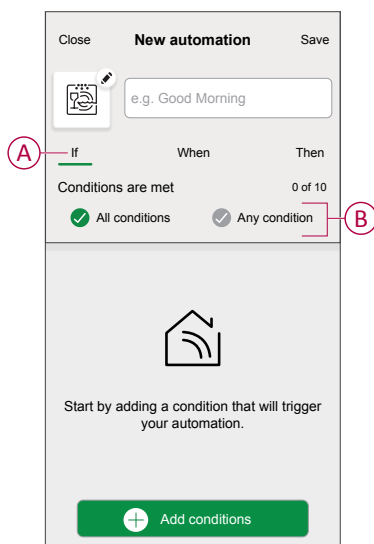
These smoke alarms must be cleaned, serviced or replaced if necessary.

Creating an automation

An automation allows you to group multiple actions together, triggered automatically or at scheduled times. Using the Wiser Home app, you can create automations based on your needs.

NOTE: To create and save automation, at least one condition and action must be added.

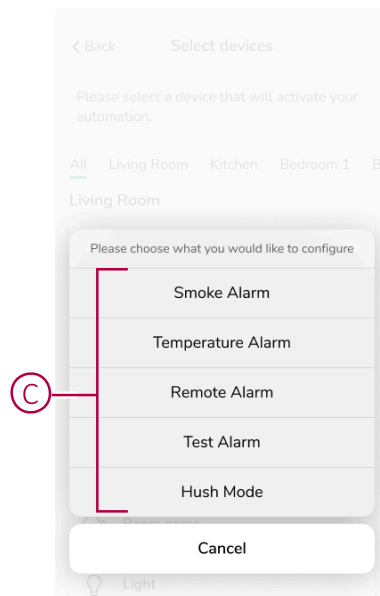
1. On the Home screen, tap .
2. Go to **Automation** >  to create an automation.
3. Tap **If (A)** and select any of the following conditions to meet (B):
 - **All conditions:** This triggers an action only when all conditions are met.
 - **Any condition:** This triggers an action when at least one condition is met.




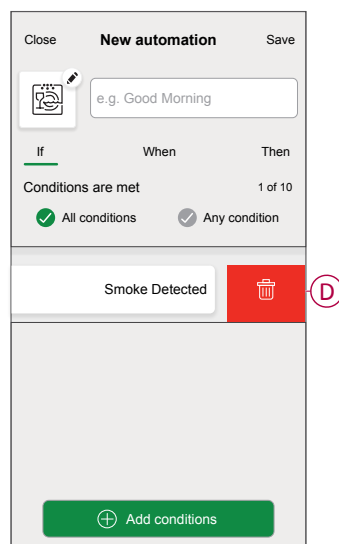
4. To add condition, tap **Add conditions** > **Device status change** > **Smoke Alarm** and select any of the following (C):

- **Smoke Alarm** - When the device detects smoke.
- **Temperature Alarm** - When the device detects temperature rise.
- **Remote Alarm** - When the device is triggered by an interconnected device.
- **Test Alarm** - When the device is in test mode.
- **Hush Mode** - When the device is in hush mode.

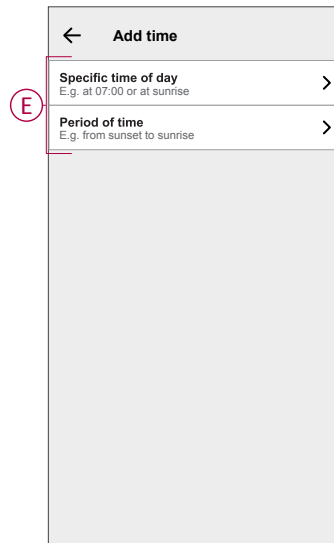
NOTE: Maximum 10 conditions can be added.




NOTE: To remove a condition, swipe it left and tap  (D).



5. To set a specific time for your automation, tap **When > Add time** and select any of the following (E):
- **Specific time of the day: Sunrise, Sunset, Custom**
 - **Period of time: Daytime, Nighttime, custom**

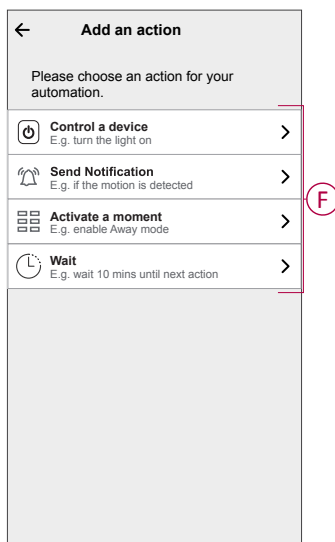



NOTE: To remove a specific time, swipe it left and tap .

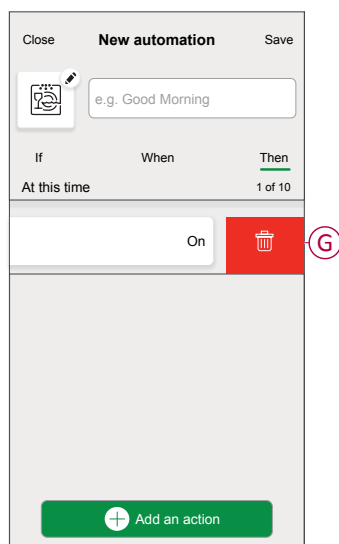
6. To add an action, tap **Then > Add an action** and select any of the following (F):

NOTE: Maximum 10 actions can be added.


- **Control a device:** Select a device that you want to trigger.
- **Send notification:** Turn on the notification for the automation.
- **Activate a moment:** Select the moment that you want to trigger.
- **Wait:** This option allows you to add a delay in an automation sequence. You can set the wait time in increments of 1 hour and 1 minute, up to a maximum of 24 hours. This feature is useful for delaying actions within an automation.

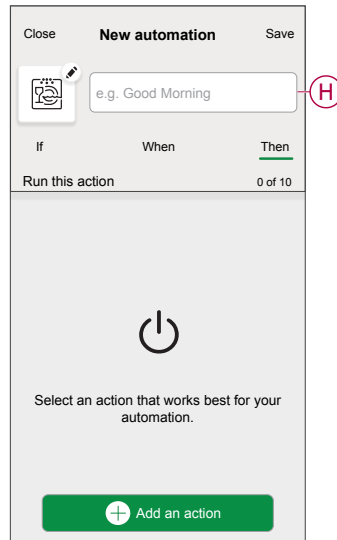



NOTE: To remove an action, swipe left on the action and tap  (G).

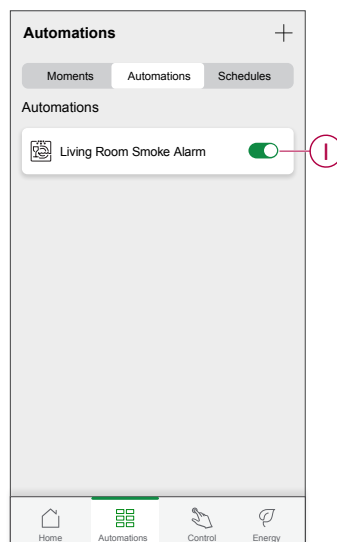


7. Enter the automation name (H) and tap **Save**.

You can choose the icon from the list that best represents your automation by tapping .



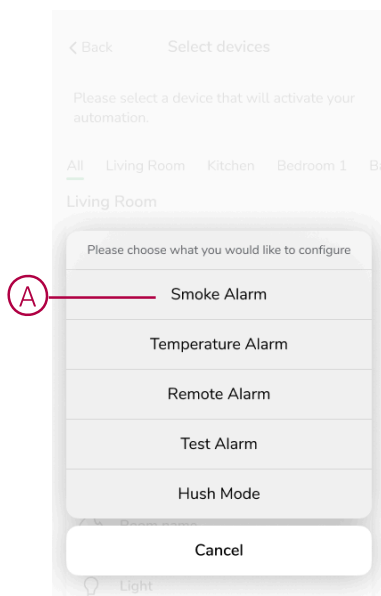
Once the automation is saved, it is visible on the **Automation** tab. Using the  (I) you can enable and disable the automation.



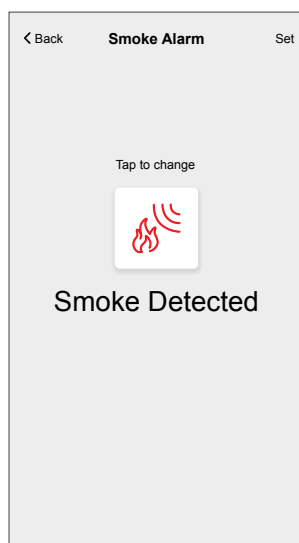
Example of an automation

In the example below, you will get a notification in your app when smoke is detected.

1. Go to **Automation** > **+** to create an automation.
2. To add a condition, tap **Add Condition** > **Device status change** > **Smoke Alarm**.
3. In Select function menu tap on **Smoke Alarm (A)**.



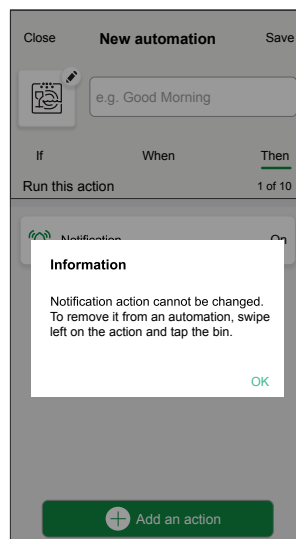
4. To change the status as Smoke Detected, tap  > **Set**.




5. To add an action, tap **Then > Add an action > Send notification > Notify me**.




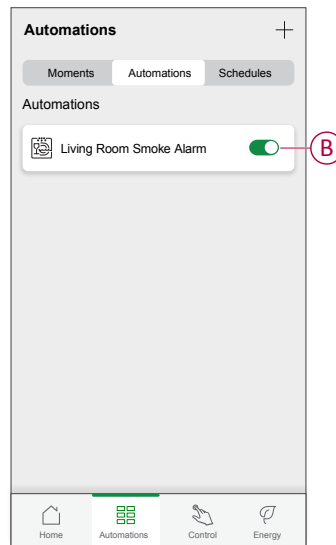
6. Read the information and tap **OK**.



7. Enter the name of the automation and tap **Save**.




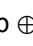
TIP: You can choose the cover image that represents your automation by tapping .

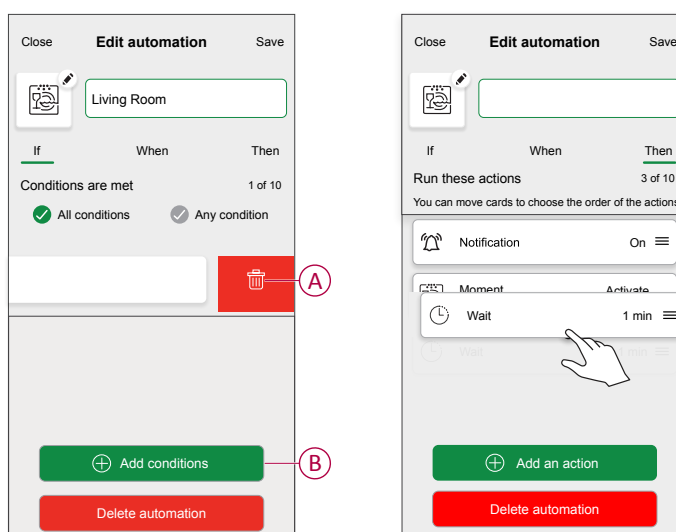
You can enable or disable saved automations on the **Automation** tab by using  (B).



You will receive notification when the automation is triggered.


Editing an automation

1. On the **Home** screen, tap **Automations** .
2. Go to **Automation**, tap the automation you want to edit.
3. On the **Edit automation** screen, you can perform the following changes:
 - Change the icon .
 - Rename the automation.
 - Tap each condition to change the settings.
 - To remove a condition, slide the condition towards left and then tap  (A) to delete it.
 - Tap  **Add conditions** (B) to add new condition.
 - To change the order of actions, tap the **Then** option, and hold an action, then drag and drop to the desired position.

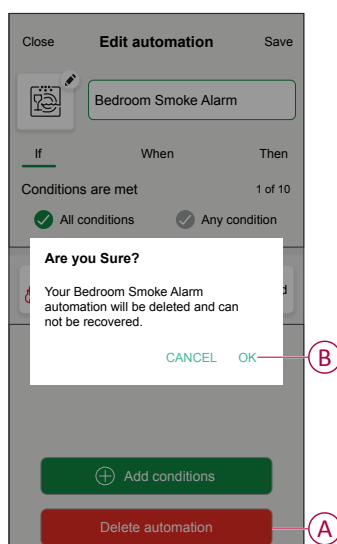


4. Tap **Save** to save the changes.

Deleting an automation


1. On the Home screen, tap **Automations** .
2. Go to **Automation**, tap the automation you want to delete.

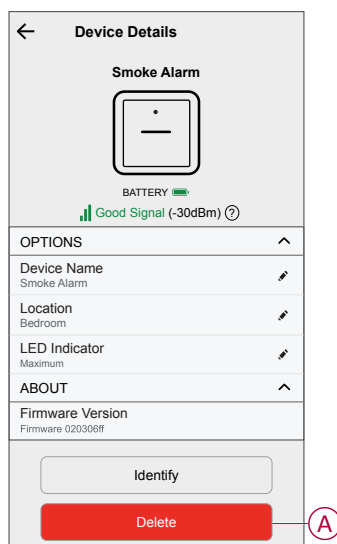
- On the **Edit automation** page, tap **Delete automation** (A) and read the confirmation message and then tap **OK** (B).



Removing the device

Using the Wiser Home app, you can remove the smoke alarm from the Wiser system.

- On the Home screen, tap .
- Tap **Devices > Smoke Alarm > Delete** (A).



- Tap **OK** to confirm.

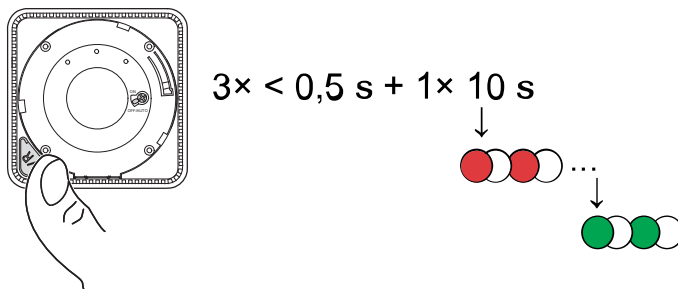
NOTE:

- Removing the smoke alarm from the app will reset the device. Once reset, the LED will blink amber, indicating that it is ready to pair.
- If you still have a problem with the reset, refer to [Resetting the device](#), page 36.

Resetting the device manually

Short press (< 0,5 s) the Setup/Reset button 3 times and then long press the Setup/Reset button once for >10 s to reset the smoke alarm to factory default mode.

IMPORTANT: All configuration data, user data and network data are deleted.



Maintenance and cleaning

A monthly inspection is recommended to help ensure the smoke alarm is dust, dirt, and insect free. The smoke alarm can be vacuumed (strongly recommended) or brushed with a soft brush to remove accumulated dust, dirt or kitchen grease. Apply a small amount of insect surface spray to a cloth and wipe around smoke alarm(s) every 3 to 6 months to mitigate insect ingress.

IMPORTANT:

1. Always test the smoke alarm after cleaning, for more information refer testing the device, page 16.
2. If necessary refer to the installation instruction for more information about installing the smoke alarm.

NOTICE



EQUIPMENT MAINTENANCE INSTRUCTIONS

- Test the smoke alarm regularly to ensure its functionality and the battery is in good condition.
- Replace the smoke alarm after 10 years from the date of manufacturing.
- Do not open the smoke alarm casing or repair yourself. There are no serviceable parts inside.



Failure to follow these instructions can result in equipment damage.

LED indications

Pairing

User Action	LED Indication	Status
Press the Setup/Reset button 3 times	Status LED blinks amber, once per second. 	Pairing mode is active for 30 seconds. When pairing is completed, status LED glows green for some time before turning Off. 

Resetting

User Action	LED Indication	Status
Press the Setup/Reset button 3 times and hold it for > 10 s.	After 10 s, status LED starts blinking red. 	The device is in reset mode. It is reset to the factory settings after 10 seconds. The device then restarts and the status LED starts blinking green before turning Off. 

Operating

Operating Mode		Standby LED	Alarming Sound	Duration
Normal mode / Standby mode		Blinks every 48 s	OFF	—
Alarm Mode	Local Alarm *	Blinks every 1 s	3 beeps every 4 s	—
	Interconnected alarm	OFF	3 beeps every 4 s	—
Test mode		1 blink every 1 s	3 beeps every 4 s	Until Test/Hush button is released
Wireless interconnection test		OFF	Continuous 3 beeps every 4 s	25 s
Hush mode		Blinks every 8 s	OFF	10 min
Low battery mode		Blinks every 48 s	1 beep every 48 s	End of life: replace smoke alarm
Fault mode		2 blinks every 48 s	2 beeps every 48 s	Until fault has been cleared
Snooze Mode	Low battery	Blinks every 24 s	OFF	10 hrs
	Fault	2 blinks every 24 s	OFF	10 hrs
	Alarm memory	Blinks every 48 s	OFF	10 hrs

NOTE: For all the operating modes, LED blinks Red.

* For local smoke alarms, all red LEDs blink, whereas, for local temperature alarms, only the standby red LED blinks.

Troubleshooting

Issue	Resolution/Action
Smoke alarm does not produce an alarm sound when tested.	<ol style="list-style-type: none"> 1. Confirm that the power switch is in ON position, or the smoke alarm is installed correctly. If you are unsure then remove and reinstall the smoke alarm. 2. Press Test/Hush button until an alarm sound is produced. Do not press consecutively. 3. If the problem persists or if you have questions about the warranty, contact customer care center.
Smoke alarm beeps and Standby LED blinks every 48 s	Battery may be low or drained. Replace the smoke alarm.
Smoke alarm beeps twice and Standby LED blinks every 48 s	<ol style="list-style-type: none"> 1. Clean the smoke alarm. Refer to <i>Maintenance</i>, page 36 section. 2. If the problem persists or if you have questions about the warranty, contact customer care center.
Smoke alarm produces alarm sound unexpectedly without smoke or steam or high temperature.	<ol style="list-style-type: none"> 1. Identify the triggered smoke alarm, indicated by a blinking Standby LED and 3 beeps every 4 s. 2. Press Test/Hush button to pause the alarm sound. The interconnected device stops alarming within 10 s. 3. Clean the smoke alarm. Refer to <i>Maintenance</i>, page 36. 4. Reinstall the smoke alarm and test. 5. If the problem persists or if you have questions about the warranty, contact customer care center. <p>IMPORTANT: After an alarm event, the smoke alarm that has blinking Standby LED every 2 s is the triggered smoke alarm. Identify the smoke alarm and follow steps 3 to 5.</p>

Technical data

Power supply	110-240 V AC, 50 / 60 Hz
Back up battery life	10 years
Operating current	≤ 60 mA
Sensing type	Photoelectric. This alarm contains NO radioactive material.
Operating temperature	0 °C to 45 °C
Ambient humidity	5 % to 95 %
Cable interconnection	Max. 40 devices
Wireless interconnection	RF+Zigbee, max. 40 devices in one network
Terminal provisions	Active, Neutral, Loop, and Interconnect terminals, each accommodates 2 × 1.5 mm ²
Operating frequency	Zigbee: 2405 - 2480 MHz RF: 868 MHz
Wireless range	40 m indoor line of sight
Horn level	85 dB at 3 m
Mounting type	Mounting on ceiling only
Dimensions (H × W × D)	115 × 115 × 46 mm
Standard	EN 14604
Certification	Zigbee 3.0

Features certified by NF marking

Mounting	<input checked="" type="checkbox"/> Wall <input checked="" type="checkbox"/> Ceiling
Works with	<input checked="" type="checkbox"/> Included battery <input checked="" type="checkbox"/> Mains power source
Battery life time	<input type="checkbox"/> 3 years <input type="checkbox"/> 3 years <input checked="" type="checkbox"/> 10 years <input checked="" type="checkbox"/> Non-replaceable
Individual alarm indicator	<input checked="" type="checkbox"/> Yes <input type="checkbox"/> No
Interconnection ability	<input checked="" type="checkbox"/> Radio or Wire, Max. number of interconnected devices: 40 <input type="checkbox"/> Intrusion center <input type="checkbox"/> Remote control
Suitable for installation in a mobile home	<input checked="" type="checkbox"/> Yes <input type="checkbox"/> No
Alarm silence facility	<input checked="" type="checkbox"/> Yes <input type="checkbox"/> No
Battery fault silence facility	<input checked="" type="checkbox"/> Yes <input type="checkbox"/> No

Schneider Electric
35 rue Joseph Monier
92500 Rueil Malmaison
France

+ 33 (0) 1 41 29 70 00

www.se.com

As standards, specifications, and design change from time to time, please ask for confirmation of the information given in this publication.

© 2024 – 2025 Schneider Electric. All rights reserved.

DUG_Smoke alarm AC_WH-03