

Wiser Smoke Alarm 240 V Square

Device user guide

Information about features and functionality of the device.

09/2024



Legal Information

The information provided in this document contains general descriptions, technical characteristics and/or recommendations related to products/solutions.

This document is not intended as a substitute for a detailed study or operational and site-specific development or schematic plan. It is not to be used for determining suitability or reliability of the products/solutions for specific user applications. It is the duty of any such user to perform or have any professional expert of its choice (integrator, specifier or the like) perform the appropriate and comprehensive risk analysis, evaluation and testing of the products/solutions with respect to the relevant specific application or use thereof.

The Schneider Electric brand and any trademarks of Schneider Electric SE and its subsidiaries referred to in this document are the property of Schneider Electric SE or its subsidiaries. All other brands may be trademarks of their respective owner.

This document and its content are protected under applicable copyright laws and provided for informative use only. No part of this document may be reproduced or transmitted in any form or by any means (electronic, mechanical, photocopying, recording, or otherwise), for any purpose, without the prior written permission of Schneider Electric.

Schneider Electric does not grant any right or license for commercial use of the document or its content, except for a non-exclusive and personal license to consult it on an "as is" basis.

Schneider Electric reserves the right to make changes or updates with respect to or in the content of this document or the format thereof, at any time without notice.

To the extent permitted by applicable law, no responsibility or liability is assumed by Schneider Electric and its subsidiaries for any errors or omissions in the informational content of this document, as well as any non-intended use or misuse of the content thereof.

Table of Contents

Safety Information.....	4
Wiser Smoke Alarm 240 V Square.....	5
For your safety	5
About the device.....	6
Installing the device	7
Pairing the device	8
Setting up connection without Wiser Hub.....	10
Interconnecting devices without Wiser Hub	10
Interconnecting standalone devices.....	11
Disconnecting a secondary device	13
Common questions on interconnection setup.....	14
Testing the device.....	15
Configuring the device	16
Renaming the device	16
Setting the device location	17
Identifying the device	18
Using the device.....	19
Checking the device history	20
Setting LED brightness.....	21
Silencing the device	23
Snoozing the device alerts.....	24
False alarm	25
Creating an automation	25
Removing the device	35
Resetting the device manually	36
Maintenance and cleaning.....	36
LED Indications	37
Troubleshooting	38
Technical Data	38
Compliance.....	39
Compliance information for Green Premium products.....	39
Trademarks.....	39

Safety Information

Important Information

Read these instructions carefully and look at the equipment to become familiar with the device before trying to install, operate, service, or maintain it. The following special messages may appear throughout this manual or on the equipment to warn of potential hazards or to call attention to information that clarifies or simplifies a procedure.



The addition of either symbol to a “Danger” or “Warning” safety label indicates that an electrical hazard exists which will result in personal injury if the instructions are not followed.



This is the safety alert symbol. It is used to alert you to potential personal injury hazards. Obey all safety messages that accompany this symbol to avoid possible injury or death.

DANGER

DANGER indicates a hazardous situation which, if not avoided, **will result in** death or serious injury.

Failure to follow these instructions will result in death or serious injury.

WARNING

WARNING indicates a hazardous situation which, if not avoided, **could result in** death or serious injury.

CAUTION

CAUTION indicates a hazardous situation which, if not avoided, **could result in** minor or moderate injury.

NOTICE

NOTICE is used to address practices not related to physical injury.

Wiser Smoke Alarm 240 V Square



CLP599WSA

For your safety

⚡⚠ DANGER

HAZARD OF ELECTRIC SHOCK, EXPLOSION, OR ARC FLASH

Safe electrical installation must be carried out only by skilled professionals. Skilled professionals must prove profound knowledge in the following areas:

- Connecting to installation networks
- Connecting to several electrical devices
- Laying electrical cables
- Safety standards, local wiring rules and regulations

Failure to follow these instructions will result in death or serious injury.

NOTICE

EQUIPMENT INSTALLATION HAZARD

- Always operate the product in compliance with the specified technical data.
- Keep the installation instruction for the life of the product.

Failure to follow these instructions can result in equipment damage.

⚠ WARNING

SEALED BATTERY HAZARD

Do not recharge, disassemble or incinerate the battery.

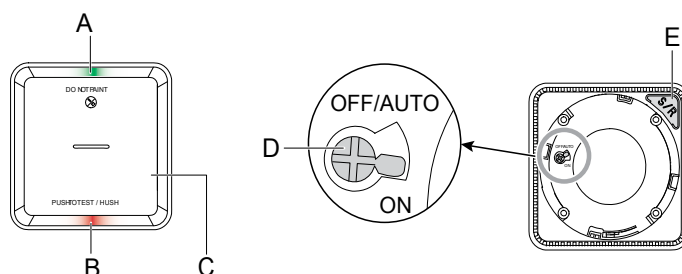
Failure to follow these instructions can result in death, serious injury, or equipment damage.

About the device

The Wiser Smoke Alarm 240 V Square (device) uses a photoelectric sensor to detect smoke generated by fire and a temperature sensor that detects heat caused by rapid increase in temperature. It also includes a backup battery that allows the device to work if the power supply is disconnected. When connected to the Wiser system, the device will send notifications via the Wiser app.

Operating elements

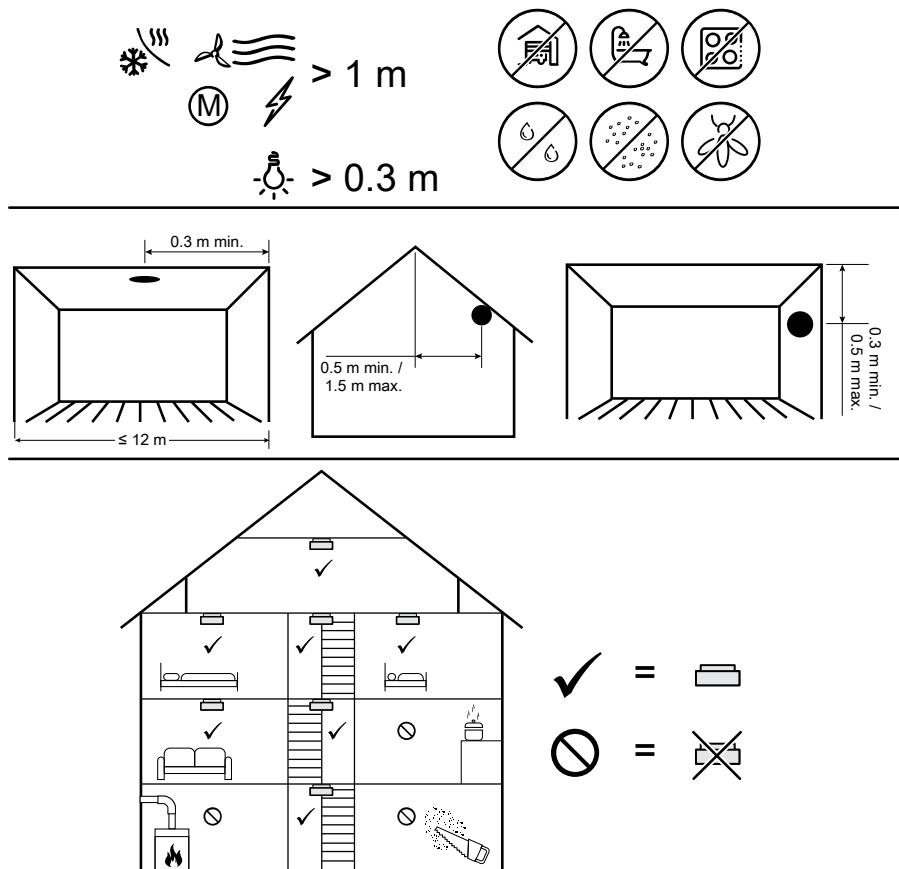
- A. Status LED (Amber, Green and Red LED)
- B. Standby LED (Red LED)
- C. Test/Hush button
- D. Power switch: OFF/Auto*
- E. Setup/Reset button



***OFF/Auto:** In this position the device is turned off. When the device is mounted on the mounting base, it turns on automatically. When it is removed, it turns off automatically.

Installation location

- Smoke Alarm can be installed on a flat/inclined ceiling, or on the wall.
- Do not install smoke alarms near windows, doors, or ducts.
- Avoid paint, stickers, or other decorations.



Installing the device

Refer to the installation instruction supplied with this product.

See Wiser Smoke Alarm 240 V.

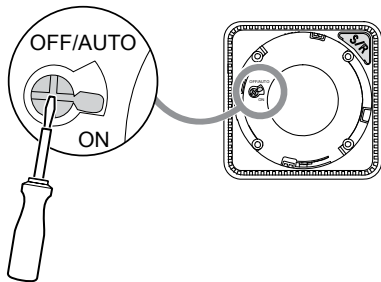
Pairing the device

Using the Wiser Home app, pair your device with the **Wiser Hub**.




IMPORTANT: Do not mount the device before pairing. The Setup/Reset button and power switch are located on the rear side of the device.

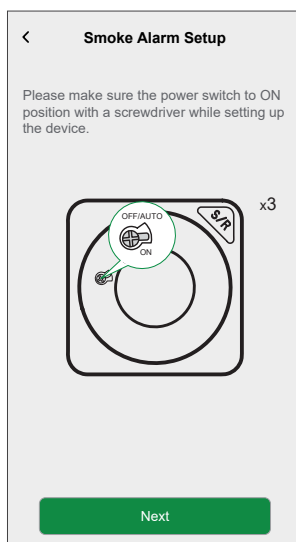
NOTE: When multiple smoke alarms are paired with the same Wiser Hub, an radio frequency (RF) interconnection is automatically created between smoke alarms.

1. Locate the power switch on the rear side of the device. Use a screwdriver to turn the power switch to **ON** position.

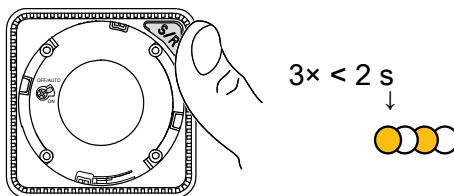


NOTE: When the device is mounted on a wall or on the ceiling, the power switch is automatically turned ON.

2. On the Home page, tap .
3. Tap **Devices** >  > **Safety and Security**.
4. Tap  **Smoke Alarm** > **Next**.
The next screen shows the progress of the pairing.

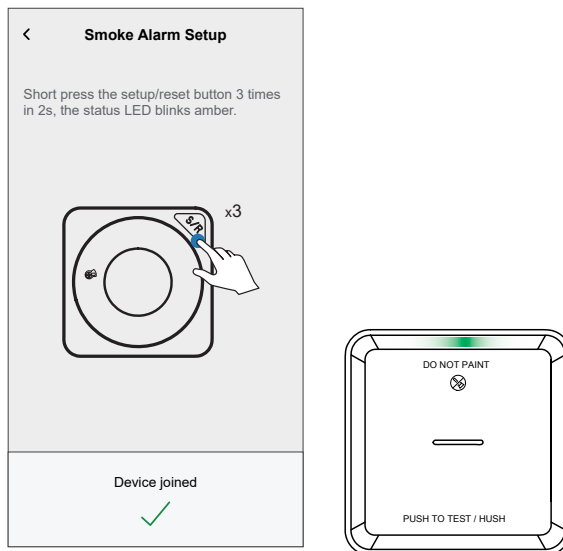


5. Short press the Setup/Reset button 3 times.



The LED blinks yellow.

After a few seconds, a solid green LED indicates that the device is successfully paired and the app shows that the device has joined.



6. Tap **Next** to assign a name to the device.

7. Tap **Next** to assign a device location and then tap **Submit**.

The device is now listed under the **All** devices or room tab.

NOTE: To add a Wiser Hub and a Wiser Smoke alarm to an existing FireTek alarm network, the wireless interconnection must be reconfigured. Pair the Wiser Smoke Alarm with the Wiser Hub first, and then pair the standalone smoke alarms with the Wiser Smoke Alarms. After reconfiguration, conduct an interconnection test on all smoke alarms. Refer:

- Setting up connection without Wiser Hub, page 10
- Testing the interconnected device(s), page 15

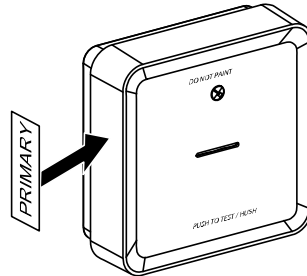
Setting up connection without Wiser Hub

Interconnecting devices without Wiser Hub

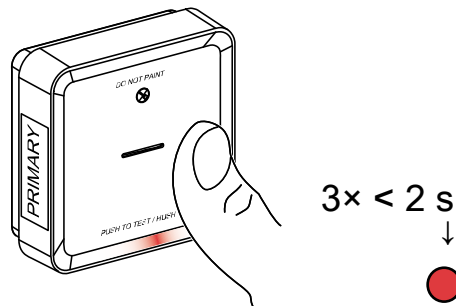
The smoke alarms (devices) can be connected directly to each other via RF connections even without a Wiser Hub network.

IMPORTANT: Turn the power switch to **ON** position on all the devices.

1. Identify a device and mark it as **Primary** with a label supplied. Other devices are considered as **Secondary**.



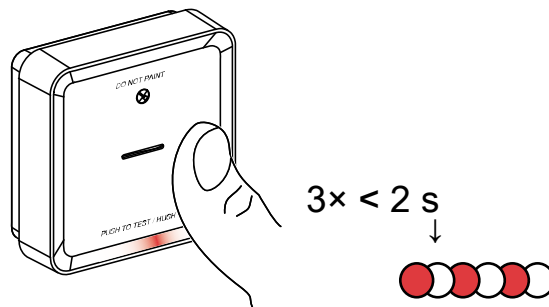
2. Short press the Test/Hush button 3 times within 2 s on the primary device.



The Standby LED turns on for 30 s once it is in pairing mode.

3. Identify a Secondary device and short press the Test/Hush button 3 times within 2 s.

The Standby LED blinks 3 times on both Primary and Secondary devices indicating a successful RF connection. Then on the Primary device, the Standby LED again turns on for 30 s



Repeat the step 3 on all Secondary devices.

NOTE: To exit from pairing mode, short press ($< 0,5$ s) the Test/Hush button 3 times on the Primary device. The Standby LED turns off indicating that the Primary device is not in pairing mode.

IMPORTANT: To make sure you have correct interconnection, perform an interconnection test on all smoke alarms before and after installation. Refer testing the interconnected device(s)..

Interconnecting standalone devices

The smoke alarm is compatible with other CLIPSAL and Wiser smoke alarms and can be paired with Wiser smoke alarm via RF connection.

Wired connection

You can setup a wired connection between Wiser and CLIPSAL Smoke alarm. The following devices are compatible with wired connections: CLP599WSA, 755PSMA4, 755RLPSMA4, and, 755PFM4

- A common neutral must be used on all wired devices.
- No additional configuration is required if all devices are wired in a group.
- Wiring with 755RFB2 is not recommended.

NOTE: For more information on wiring, refer instruction sheet.

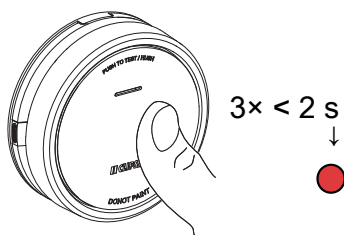
Wireless connection

You can setup a wireless connection between CLIPSAL and Wiser smoke alarm. The following devices are compatible with wireless connections: CLP599WSA, CLP599WSA, 755LPSMA4, and, 755RFB2

1. Select a device as primary and paste **Primary** label on the device. Other standalone devices must be considered as **Secondary**.

NOTE: If devices are connected to the Wiser hub, identify one as primary and consider the rest as secondary

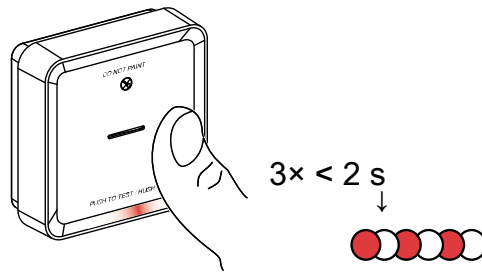
2. On the primary device, short press the Test/ Hush button 3 times in 2 s. The Standby LED turns Red for 30 s once it is in pairing mode.



3. Depending on the secondary device, perform one of the following:

a. CLP599WSAL and CLP599WSA Model

Identify a secondary device and short press the Test/Hush button 3 times within 2 s.



The Standby LED blinks 3 times on both primary and secondary devices indicating a successful RF connection. Then on the primary device, the Standby LED again turns on for 30 s

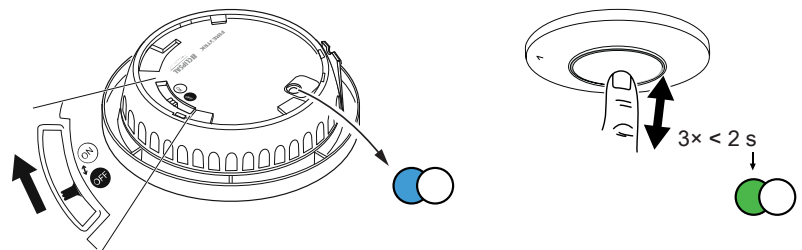
b. 755LPSMA4 Model

(1) Turn the switch to the **ON** position located at the rear side of the device, the blue LED blinks once.

(2) While the Standby LED on the primary device is ON for 30 s, on the secondary device, press the Test/Hush button 3 times within 2 s. Network LED blinks green for 3 s.

(3) The network LED on the secondary device turns On for an additional 3 s.

(4) Repeat the above steps for other secondary devices.

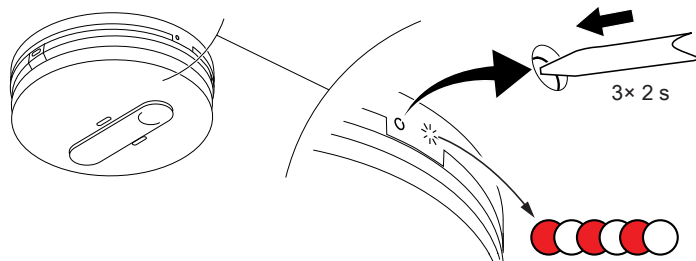


c. 755RFB2 Model

(1) While the Standby LED on the primary device is ON for 30 s, on the secondary device, press wireless pairing button 3 times within 2 seconds.

(2) The LED on the secondary device blinks 3 times indicating successful interconnection.

(3) Repeat the above steps for other secondary devices.



IMPORTANT: To make sure you have correct interconnection, perform an interconnection test on all smoke alarms before and after installation. Refer testing the interconnected device(s).

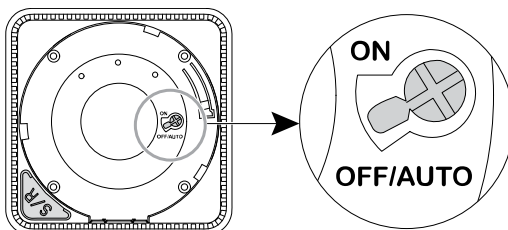
Disconnecting a secondary device

Remove a Secondary device from the mounting base (See "Removing a device from the mounting base" in the instruction manual).

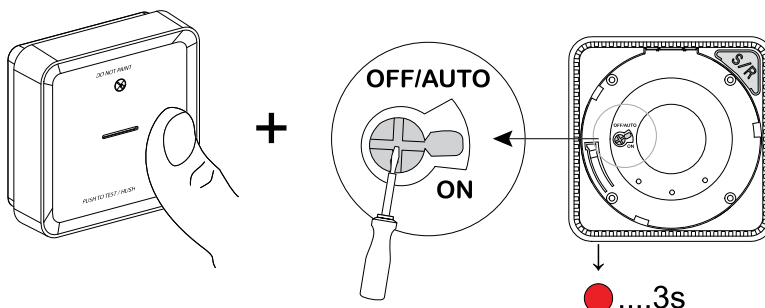
NOTE:

- Do not remove the Primary device.
- Read the following steps before disconnecting a Secondary device.

1. Make sure that the power switch is in OFF/AUTO position.

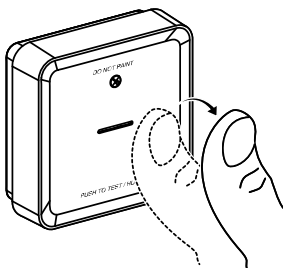


2. Press and hold the Test/Hush button and simultaneously turn the power switch to ON position.

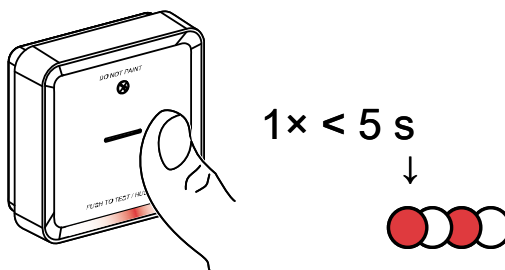


The Standby LED turns on for 3 s.

3. Continue to hold the Test/Hush button until the Standby LED turns off. Then release the Test/Hush button.



4. Short press the Test/Hush button when the Standby LED is again on for 3 s.



The Standby LED blinks for 5 s indicating disconnecting of RF interconnection and then the Status LED blinks green for 7 times.

IMPORTANT:

- When the Secondary device is successfully disconnected, make sure to turn the power switch to OFF/ AUTO position.
- Conduct an interconnection test on all remaining smoke alarms when disconnecting is done. Refer, [testing the interconnected device\(s\)](#).

Common questions on interconnection setup

Scenarios		Required steps for interconnection
I have only 755WSA smoke alarms and Wiser Hub.	All smoke alarms to be paired to Wiser Hub.	Follow the steps in Pairing the device to pair all devices to the same Wiser Hub. Once paired, wireless connections are automatically established between the devices. Test all units to make sure interconnection is correct. Refer testing the interconnected device(s) .
	Only one or part of smoke alarms to be paired to Wiser Hub.	<ol style="list-style-type: none"> 1. Pair the selected device(s) to the Wiser Hub according to Pairing the device. 2. Then, select one of the paired 755WSA smoke alarms as Primary to connect all others according to Interconnecting devices without Wiser Hub. <p>Once the above steps are completed, a wireless connection can be established between all devices. Test all units to make sure interconnection is correct. Refer testing the interconnected device(s).</p>
I have only 755WSA smoke alarms without Wiser Hub.		Identify one device as Primary and pair all others according to Interconnecting devices without Wiser Hub . Once paired, wireless connections are automatically established between the devices. Test all units to make sure interconnection is correct. Refer testing the interconnected device(s) .
I have 755WSA smoke alarms and standalone 755LPSMA4 / 755RFB2 smoke alarms / RF base but without Wiser Hub.		Identify one device as Primary and pair all others 755WSA smoke alarms according to Interconnecting devices without Wiser Hub and standalone 755LPSMA4 / 755RFB2 smoke alarms / RF base according to Interconnecting standalone devices . Once paired, wireless connections are automatically established between the devices. Test all units to make sure interconnection is correct. Refer testing the interconnected device(s) . NOTE: If 755LPSMA4 / 755RFB2 is already installed and paired before, use the Primary unit to pair with all Wiser smoke alarms.
I have 755WSA smoke alarms and standalone 755LPSMA4 / 755RFB2 smoke alarms / RF base and Wiser Hub.	All 755WSA smoke alarms to be paired to Wiser Hub.	<ol style="list-style-type: none"> 1. Follow the steps in Pairing the device to pair all devices to the same Wiser Hub. 2. Then, select one of the paired 755WSA smoke alarms as Primary to connect all 755LPSMA4 / 755RFB2 according to Interconnecting standalone devices. <p>Once the above steps are completed, a wireless connection can be established between all devices. Test all units to make sure interconnection is correct. Refer testing the interconnected device(s). NOTE: If 755LPSMA4 / 755RFB2 are already installed and paired before, reconnect by pairing them again.</p>
	Only one or part of 755WSA smoke alarms to be paired to Wiser Hub.	<ol style="list-style-type: none"> 1. Pair the required one or part of 755WSA smoke alarms to same Wiser Hub according to Pairing the device. 2. Then, select one of the paired 755WSA smoke alarms as Primary to connect all 755LPSMA4 / 755RFB2 according to Interconnecting devices without Wiser Hub and Interconnecting standalone devices for 755LPSMA4 or 755RFB2 smoke alarms or RF bases. <p>Once the above steps are completed, a wireless connection can be established between all devices. Test all units to make sure interconnection is correct. Refer testing the interconnected device(s). NOTE: If 755LPSMA4 / 755RFB2 are already installed and paired before, reconnect by pairing them again.</p>

Testing the device

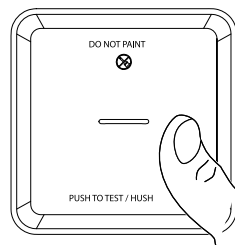
The device has a test mode that helps ensure the proper operation of the device. It is recommended to test the device once a month. If the device is installed in a mobile home, it is recommended to test the device weekly and before every journey.

NOTE: Using Wiser app you can set the monthly reminder for test alarm in settings.

Testing the individual device

IMPORTANT: Test the device once a month to ensure proper operation.

Press the Test/Hush button on each device for more than 3 s until an alarm sounds off. If the test alarm does not sound, then the device is not connected to power supply.

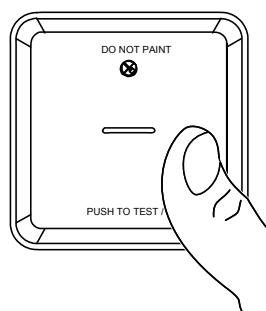


1 × > 3 s

Testing the interconnected device(s)

It is possible to test all the devices simultaneously in an interconnected network with one operation.

1. Select any interconnected device.
2. Press and hold the Test/Hush button for more than 18 s until an alarm goes off on all interconnected devices.



1 × > 18 s

If there is no alarm triggered on the interconnected devices, make sure that the wireless interconnection setup is correct. Also the distance between each device is within the specification.

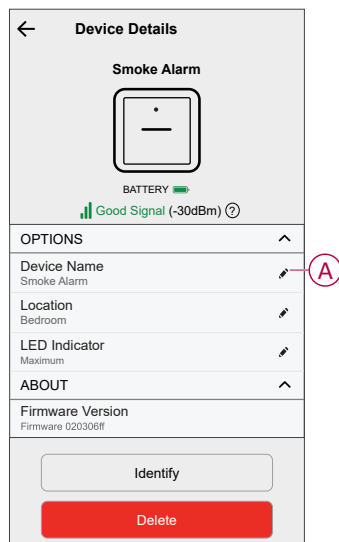
NOTE: The triggered alarm on the interconnected devices remains for a longer time even if you release the Test/Hush button.

Configuring the device

Renaming the device



Using the Wiser Home app, you can rename the device.
To rename the device:

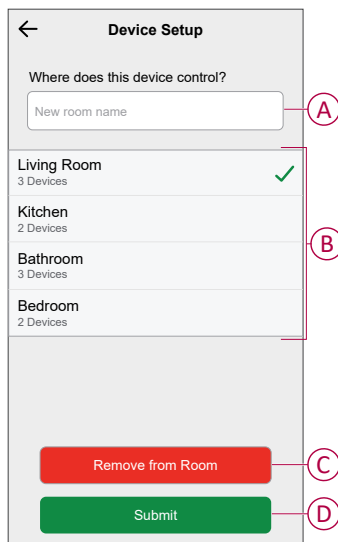
1. On the Home page, tap .
2. Tap **Devices > Smoke Alarm > Device Name (A)**.



Setting the device location

You can change the device location using Wiser Home app (such as bedroom, living room, dining room etc.).

1. On the Home page, tap .
2. Tap **Devices**, select the device from the list for which you wish to change the location.
3. Tap **Location**  to open setup page.
4. On setup page, you can enter **New room name** (A) or select an existing room from the list (B).





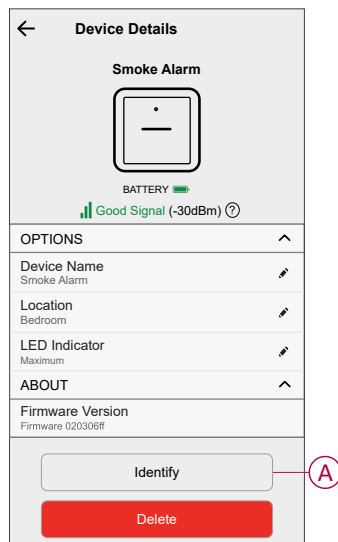
TIP: If the device is already assigned, you can remove it from the existing room. Tap **Remove from Room** (C).

5. Once changes are done, tap **Submit** (D).

Identifying the device

Using the Wiser Home app, identify the device among the smoke alarms available in a home.

1. On the Home page, tap .
2. Tap **Devices** >  > **Identify (A)**.



NOTE: The LED on the device may take up to 60 minutes to blink and identify, based on when the smoke alarm sends a signal to the hub within its regular interval.

3. Tap **OK** to finish identifying the device.

Using the device

The Control Panel of the device allows you to view the current state of the device and allow you to access the history and settings.

On the **Home** page, tap **All devices** > **Smoke Alarm** to access the control panel.

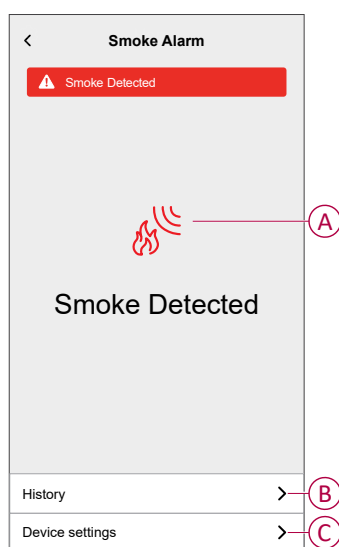
On the Smoke Alarm control panel page, you can see the following:

- Current state of the device (A)
- History (B)

NOTE: The history page gives information about the device (date, time, and type of alarm detected, for more information, refer to [Checking the device history](#), page 20.

- Device settings (C)

NOTE: The device setting page gives information about setting the LED brightness of the device, for more information, refer to [LED brightness settings](#), page 21.



Checking the device history

Using the Wiser Home app, you can monitor the smoke detection by accessing the device history.

NOTE: All device history is stored in the cloud. When the cloud connection is lost, the device history cannot be viewed.

To view the device history:

1. On the **Home** page, tap **All devices > Smoke Alarm**.
2. On the device control panel page, tap **History**.

In the **History** page, you can see the date, time, and type of alarm detected.

NOTE: For a maximum period of 90 days, device history can be recorded.

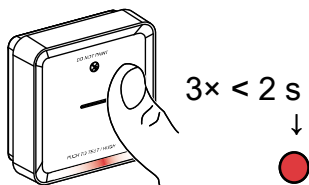
< History	
TODAY	
09:42:42	Temperature Alarm
09:55:44	Smoke Alarm
YESTERDAY	
10:42:55	Remote Alarm
11:22:45	Hush Mode On
11:32:55	Hush Mode Off
01ST NOV 2021	
11:00:55	Fault Warning
12:22:55	Smoke Alarm
12:55:44	Tamper Alarm
02ND NOV 2021	
07:00:55	Temperature Alarm
08:22:55	Battery Defect
09:55:44	Smoke Alarm

Setting LED brightness

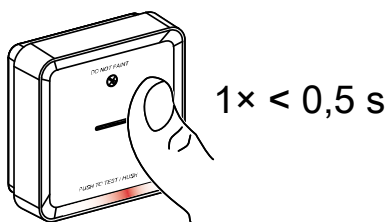
You can change the LED brightness to minimum and maximum manually and also using the Wiser Home app.

Changing the LED brightness manually

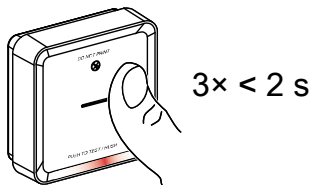
1. When the device is in standby mode, short press the test/hush button 3 times within 2 s.




2. When the Red LED is On, short press the Test/Hush button to switch between Min. and Max. LED brightness.

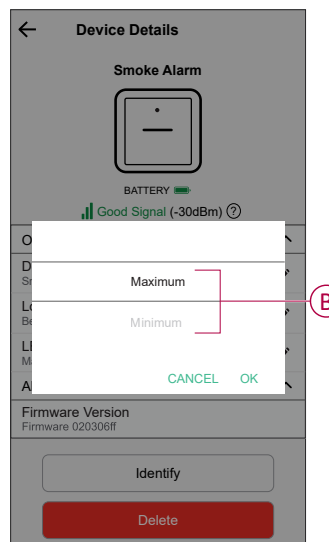
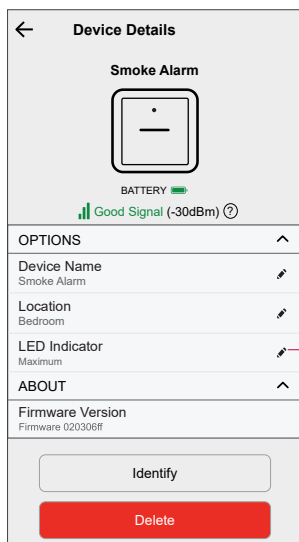


3. Again short press the Test/Hush button 3 times within 2 s to store the adjusted brightness level. Otherwise, you can wait 30s for the standby LED to turn off, then the brightness level will be saved.



Changing the LED brightness using app

1. On the **Home** page, tap .
2. Tap **Devices > Smoke Alarm > LED Indicator (A)**.
3. Short press **Setup/Reset (S/R)** button on the device to wake it before changing the brightness level.
4. In the app, select one of the following (B):
 - **Maximum**
 - **Minimum**
5. Tap **OK**.



Silencing the device

Hush the smoke alarms

During an alarm event, first identify the smoke alarm/s that detected smoke, these will have Red LEDs blinking. Then short press the Test/Hush button on the device to stop the alarm.

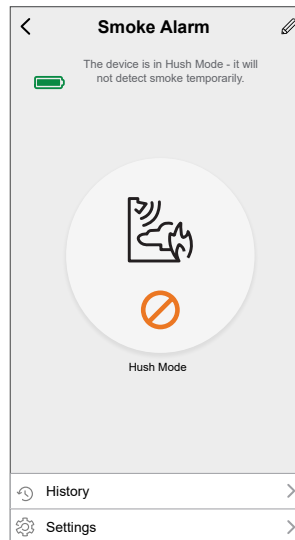
IMPORTANT: In hush mode, the device will not detect smoke/high temperature for 10 minutes. After this time the device resumes to normal operation. During this time, the Standby LED blinks once every 8 s.

- For instance, if the smoke is detected and the device is set to hush mode, high-temperature detection will still be active.

or

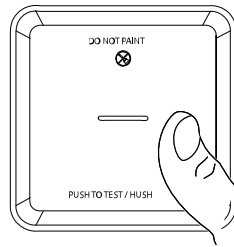
- If high temperature is detected and then device is set to hush mode, smoke detection will still be active.
- In the event that smoke and high temperature are both detected at the same time, and the device is set to hush mode, then both smoke and high temperature detection will not work for the next 10 minutes.
- In an interconnected group, if more than one device has blinking Red LEDs and an active alarm, short press the Test/Hush button on all devices. All interconnected devices stop alarming within 5 to 10 s.

NOTE: Wait for 10 minutes before performing any test to avoid malfunctioning of the device. Once the device is set to Hush Mode the status can be checked in Wiser app.



Temporarily disabling smoke detection

To temporarily disable the smoke detection of a device, short press the Test/Hush button once when the device is in Standby mode. The device will not detect smoke for 10 minutes. During this mode the Standby LED blinks once every 8 s.



$1 \times < 3 \text{ s}$

NOTE: The temperature sensor remains active even when the smoke detection is disabled.

Snoozing the device alerts

Low Battery

When the battery is low, the Standby LED blinks every 48 s, together with a beep. You can snooze the low battery indication for 10 hours by short pressing the Test/Hush button once.

IMPORTANT: The user must replace the device within 30 days after the first alert.

Fault detection

When a device fault is detected, 2 beeps occur every 48 s together with blinking Standby LED. You can snooze the indication for 10 hours by short pressing the Test/Hush button once.

Refer troubleshooting, page 38.

Alarm memory

In an interconnected group, the Standby LED on the triggered device blinks once every 2 s for 72 hours after the alarm has stopped. This allows the user to identify the device that was triggered by smoke/high temperature. Short press the Test/Hush button once to snooze the blinking LED for 10 hours.



False alarm

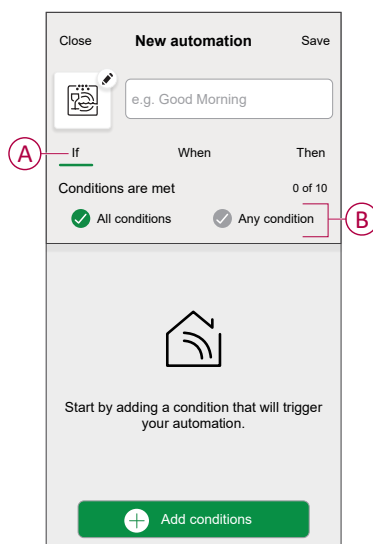
In an event of a false alarm in an interconnected group, it is important to identify the triggering device(s) by finding the devices with flashing Red LED every 2 s, or by using alarm history log in the app. These devices must be cleaned, serviced or replaced if necessary.

Creating an automation

An automation allows you to group multiple actions together, triggered automatically or at scheduled times. Using the Wiser Home app, you can create automations based on your needs.

NOTE: To create and save automation, at least one condition and action must be added.

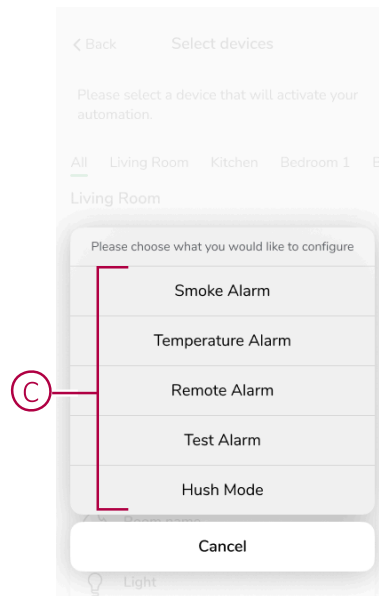
1. On the **Home** page, tap .
2. Go to **Automation** >  to create an automation.
3. Tap **If (A)** and select any of the following conditions to meet (B):
 - **All conditions:** This triggers an action only when all conditions are met.
 - **Any condition:** This triggers an action when at least one condition is met.




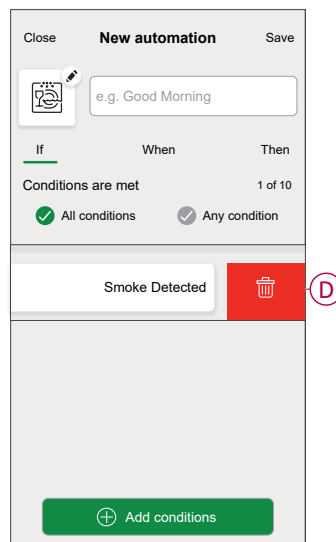
4. To add condition, tap **Add conditions** > **Device status change** > **Smoke Alarm** and select any of the following (C):

- **Smoke Alarm** - When the device detects smoke.
- **Temperature Alarm** - When the device detects temperature rise.
- **Remote Alarm** - When the device is triggered by an interconnected device.
- **Test Alarm** - When the device is in test mode.
- **Hush Mode** - When the device is in hush mode.

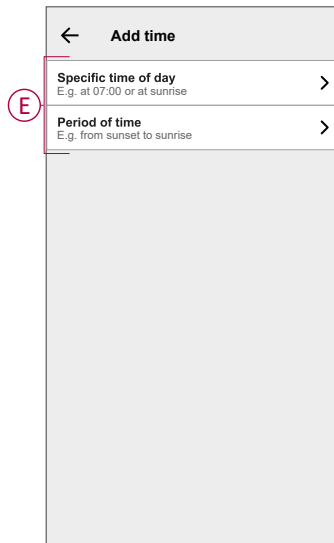
NOTE: Maximum 10 conditions can be added.




NOTE: To remove a condition, swipe the it left and tap  (D).



5. To set a specific time for your automation, tap **When > Add time** and select any of the following (E):
- **Specific time of the day: Sunrise, Sunset, Custom**
 - **Period of time: Daytime, Nighttime, custom**

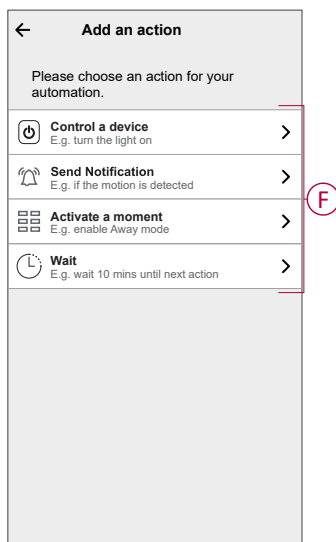



NOTE: To remove a specific time, swipe the it left and tap .

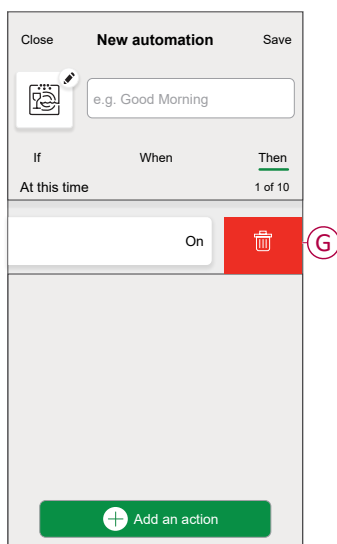
6. To add an action, tap **Then > Add an action** and select any of the following (F):

NOTE: Maximum 10 actions can be added.


- **Control a device:** Select a devices that you want to trigger.
- **Send notification:** Turn on the notification for the automation.
- **Activate a moment:** Select the moment that you want to trigger.
- **Wait:** This option allows you to add a delay in an automation sequence. You can set the wait time in increments of 1 hour and 1 minute, up to a maximum of 24 hours. This feature is useful for delaying actions within an automation.

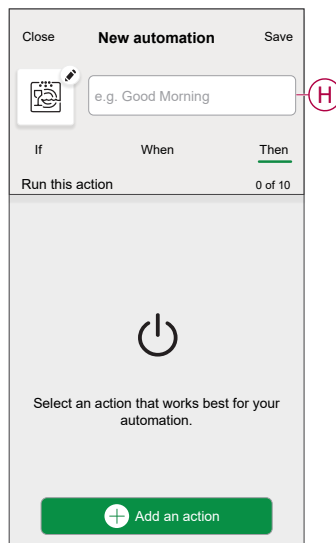



NOTE: To remove an action, swipe left on the action and tap  (G).

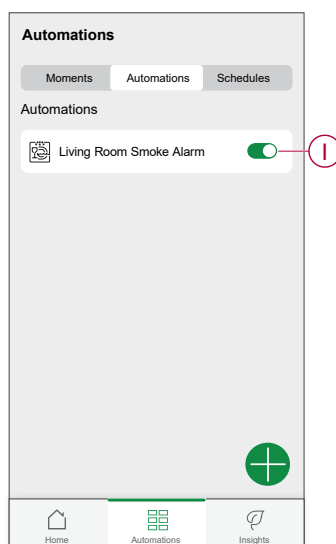


7. Enter the automation name (H) and tap **Save**.

You can choose the icon from the list that best represents your automation by tapping .



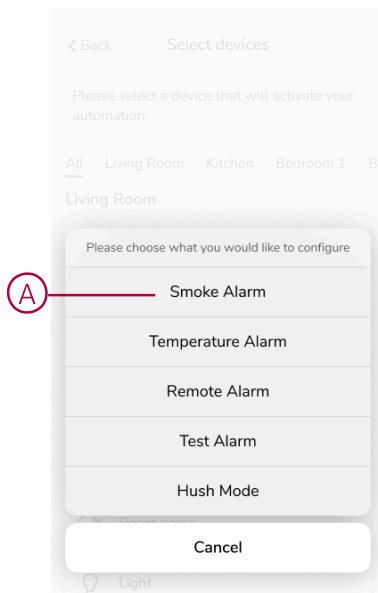
Once the automation is saved, it is visible on the **Automation** tab. Using the  (I) you can enable and disable the automation.



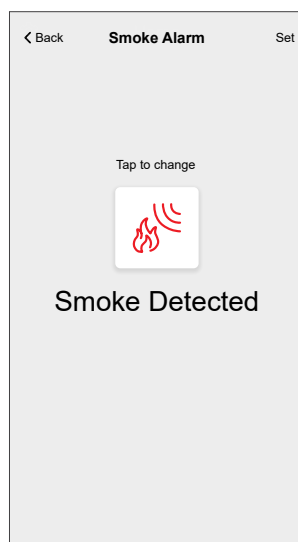
Example of an automation

In the example below, you will get a notification in your app when smoke is detected.

1. Go to **Automation** > **+** to create an automation.
2. To add a condition, tap **Add Condition** > **Device status change** > **Smoke Alarm**.
3. In Select function menu tap on **Smoke Alarm (A)**.



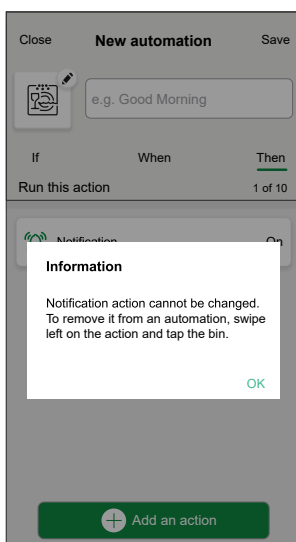
4. To change the status as Smoke Detected, tap  > **Set**.




5. To add an action, tap **Then** > **Add an action** > **Send notification** > **Notify me**.




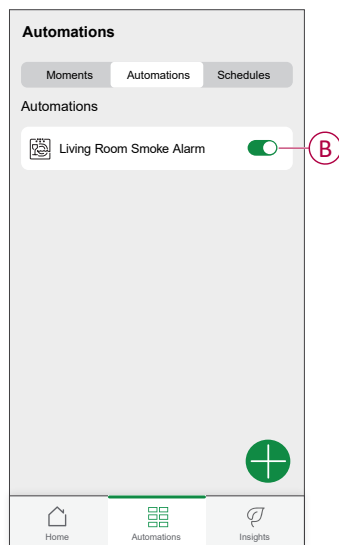
6. Read the information and tap **OK**.



7. Enter the name of the automation and tap **Save**.





TIP: You can choose the cover image that represents your automation by tapping .

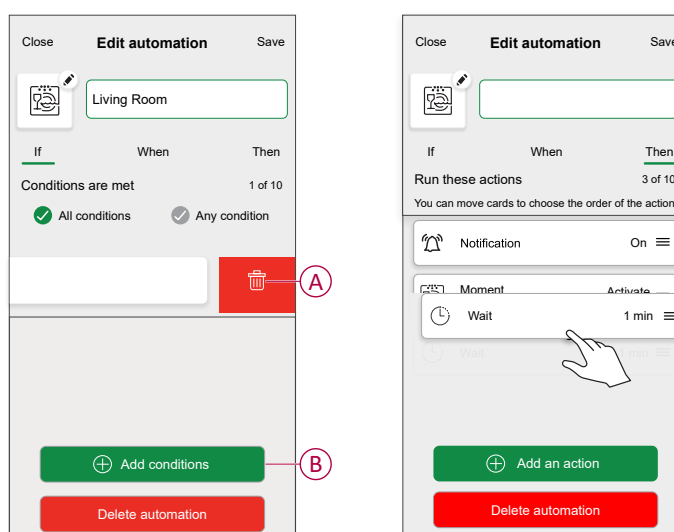
You can enable or disable saved automations on the **Automation** tab by using  (B).



You will receive notification when the automation is triggered.


Editing an automation

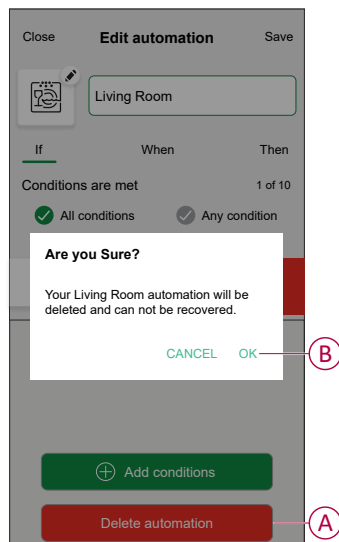
1. On the **Home** page, tap **Automations** .
2. Go to **Automation**, tap the automation you want to edit.
3. On the **Edit automation** page, you can perform following changes:
 - Change the icon .
 - Rename the automation.
 - Tap each condition to change the settings.
 - To remove a condition, slide the condition towards left and then tap  (A) to delete it.
 - Tap  **Add conditions** (B) to add new condition.
 - To change the order of actions, tap the **Then** option, and hold an action then drag and drop to the desired position.



4. Tap **Save** to save the changes.


Deleting an automation

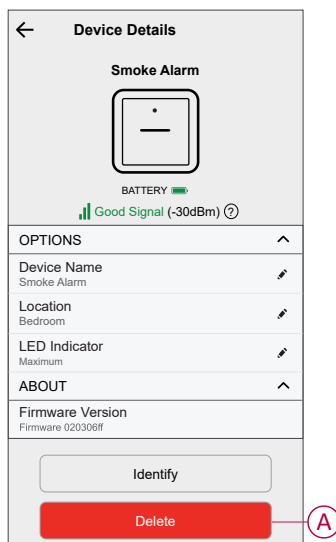
1. On the **Home** page, tap **Automations** .
2. Go to **Automation**, tap the automation you want to delete.
3. On the **Edit automation** page, tap **Delete automation** (A) and read the confirmation message and then tap **OK** (B).



Removing the device

Using the Wiser Home app, you can remove the device from the Wiser system.
To remove the device:

1. On the Home page, tap .
2. Tap **Devices > Smoke Alarm > Delete (A)**.



3. Tap **OK** to confirm.

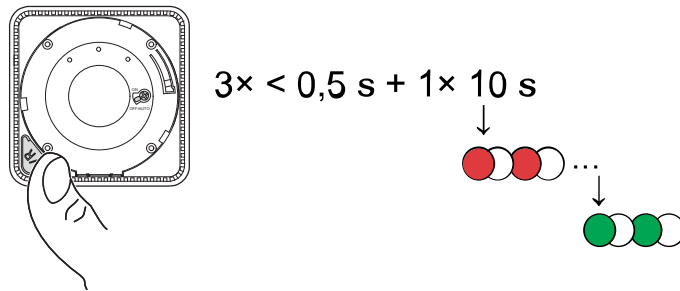
NOTE:

- By removing the device, you will reset the device. The device blinks amber upon resetting, indicating that it is now ready to pair.
- If you still have a problem with the reset, refer to [Resetting the device](#), page 36.

Resetting the device manually

Short press (< 0,5 s) the Setup/Reset button 3 times and then long press the Setup/Reset button once for >10 s to reset the device to factory default mode.

IMPORTANT: All configuration data, user data and network data are deleted.



Maintenance and cleaning

A monthly inspection is recommended to help ensure the device is dust, dirt, and insect free. The device can be vacuumed (strongly recommended) or brushed with a soft brush to remove accumulated dust, dirt or kitchen grease. Apply a small amount of insect surface spray to a cloth and wipe around device(s) every 3 to 6 months to mitigate insect ingress.

IMPORTANT:

1. Always test the device after cleaning, for more information refer [testing the device](#), page 15.
2. If necessary refer to the installation instruction for more information about installing the device.

NOTICE



EQUIPMENT MAINTENANCE INSTRUCTIONS

- Test the device regularly to ensure its functionality and the battery is in good condition.
- Replace the device after 10 years from the date of manufacturing.
- Do not open the device casing or repair yourself. There are no serviceable parts inside.



Failure to follow these instructions can result in equipment damage.

LED Indications

Pairing

User Action	LED Indication	Status
Press the Setup/Reset button 3 times	Status LED blinks yellow, once per second. 	Pairing mode is active for 30 seconds. When pairing is completed, status LED glows green for some time before turning Off. 

Resetting

User Action	LED Indication	Status
Press the Setup/Reset button 3 times and hold it for > 10 s.	After 10 s, status LED starts blinking red. 	The device is in reset mode. It is reset to the factory settings after 10 seconds. The device then restarts and the status LED starts blinking green before turning Off. 

Operating

Operating Mode		Standby LED	Alarming Sound	Duration
Normal mode / Standby mode		Blinks every 48 s	OFF	—
Alarm Mode	Local Alarm *	Blinks every 1 s	3 beeps every 4 s	—
	Interconnected alarm	OFF	3 beeps every 4 s	—
Test mode		1 blink every 1 s	3 beeps every 4 s	Until Test/Hush button is released
Wireless interconnection test		OFF	Continuous 3 beeps every 4 s	25 s
Hush mode		Blinks every 8 s	OFF	10 min
Low battery mode		Blinks every 48 s	1 beep every 48 s	End of life: replace smoke alarm
Fault mode		2 blinks every 48 s	2 beeps every 48 s	Until fault has been cleared
Snooze Mode	Low battery	Blinks every 24 s	OFF	10 hrs
	Fault	2 blinks every 24 s	OFF	10 hrs
	Alarm memory	Blinks every 48 s	OFF	10 hrs

NOTE: For all the operating modes, LED blinks Red.

* For local smoke alarms, all red LEDs blink, whereas, for local temperature alarms, only the standby red LED blinks.

Troubleshooting

Issue	Resolution/Action
Device does not produce an alarm sound when tested.	<ol style="list-style-type: none"> 1. Confirm that the power switch is in ON position, or the device is installed correctly. If you are unsure then remove and reinstall the device. 2. Press Test/Hush button until an alarm sound is produced. Do not press consecutively. 3. If the problem persists or if you have questions about the warranty, contact customer care center.
Device beeps and Standby LED blinks every 48 s	Battery may be low or drained. Replace the device.
Device beeps twice and Standby LED blinks every 48 s	<ol style="list-style-type: none"> 1. Clean the device. Refer to Maintenance, page 36 section. 2. If the problem persists or if you have questions about the warranty, contact customer care center.
Device produces alarm sound unexpectedly without smoke or steam or high temperature.	<ol style="list-style-type: none"> 1. Identify the triggered device, indicated by a blinking Standby LED and 3 beeps every 4 s. 2. Press Test/Hush button to pause the alarm sound. The interconnected device stops alarming within 10 s. 3. Clean the device. Refer to Maintenance, page 36. 4. Reinstall the device and test. 5. If the problem persists or if you have questions about the warranty, contact customer care center. <p>IMPORTANT: After an alarm event, the device that has blinking Standby LED every 2 s is the triggered device. Identify the device and follow steps 3 to 5.</p>

Technical Data

Power supply	220-240 VAC, 50 / 60 Hz
Back up battery Life	10 years
Operating Current	≤40 mA
Sensing Type	Photoelectric. This alarm contains NO radioactive material.
Operating Temperature	0 °C to 45 °C
Ambient Humidity	5% to 95%
Cable interconnection	Max. 40 devices
Wireless interconnection	RF+Zigbee, max. 40 devices in one network
Terminal provisions	Active, Neutral, Loop and Interconnect terminals, each accommodates 2 × 1.5 mm ² or 1 × 2.5 mm ²
Operating frequency	Zigbee: 2405 - 2480 MHz RF: 433 MHz
Wireless Range	40m indoor line of sight
Horn Level	85 dB at 3 m
Mounting Type	Mounting on ceiling and wall only
Dimensions (H × W × D)	115 × 115 × 46 mm
Standard	AS 3786: 2014+A1: 2015+A2: 2018
Certification	Zigbee 3.0 RCM Activfire SAI Global

Compliance

Compliance information for Green Premium products

Find and download comprehensive information about Green Premium products, including RoHS compliance and REACH declarations as well as Product Environmental Profile (PEP) and End-of-Life instructions (EOLI).

<https://checkaproduct.se.com/>



General information about Green Premium products

Click the link below to read about Schneider Electric's Green Premium product strategy.

<https://www.schneider-electric.com/en/work/support/green-premium/>



Trademarks

This guide makes reference to system and brand names that are trademarks of their relevant owners.

- Zigbee® is a registered trademark of the Connectivity Standards Alliance.
- Apple® and App Store® are brand names or registered trademarks of Apple Inc.
- Google Play™ Store and Android™ are brand names or registered trademarks of Google Inc.
- Wi-Fi® is a registered trademark of Wi-Fi Alliance®.
- Wiser™ is a trademark and the property of Schneider Electric, its subsidiaries and affiliated companies.

Other brands and registered trademarks are the property of their respective owners.

Schneider Electric (Australia) Pty Ltd
33-37 Port Wakefield Road
Gepps Cross SA 5094
Australia

Customer Care: 13 73 28

www.clipsal.com

As standards, specifications, and design change from time to time,
please ask for confirmation of the information given in this publication.

© 2024 – 2024 Schneider Electric. All rights reserved.

DUG_Smoke alarm AC Square_WHP-01