

# Wiser Fan Speed Controller

**IH120001OF**

## Device User Guide

Release date 10/2023



# Legal Information

The Schneider Electric brand and any trademarks of Schneider Electric SE and its subsidiaries referred to in this guide are the property of Schneider Electric SE or its subsidiaries. All other brands may be trademarks of their respective owners.

This guide and its content are protected under applicable copyright laws and furnished for informational use only. No part of this guide may be reproduced or transmitted in any form or by any means (electronic, mechanical, photocopying, recording, or otherwise), for any purpose, without the prior written permission of Schneider Electric.

Schneider Electric does not grant any right or license for commercial use of the guide or its content, except for a non-exclusive and personal license to consult it on an "as is" basis. Schneider Electric products and equipment should be installed, operated, serviced, and maintained only by qualified personnel.

As standards, specifications, and designs change from time to time, information contained in this guide may be subject to change without notice.

To the extent permitted by applicable law, no responsibility or liability is assumed by Schneider Electric and its subsidiaries for any errors or omissions in the informational content of this material or consequences arising out of or resulting from the use of the information contained herein.

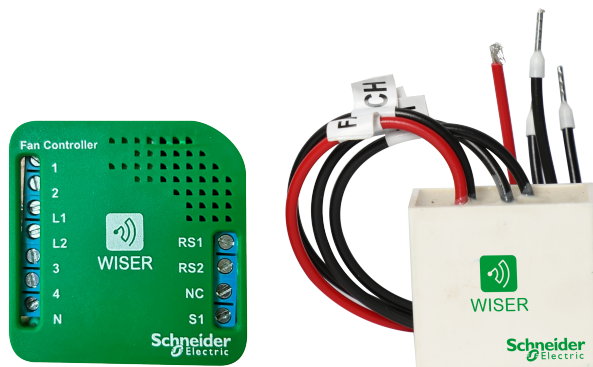
# Table of Contents

Wiser Fan Speed Controller .....	5
Safety Information .....	5
About the device .....	6
Installing the device .....	6
Pairing the device .....	6
Configuring the device .....	8
Renaming the device .....	8
Changing the device location .....	8
Using the device .....	9
Manual operation .....	9
Turning the device On/Off using app .....	10
Creating a schedule .....	10
Creating a moment .....	12
Checking the device history .....	16
Removing the device .....	16
Resetting the device .....	17
LED indication .....	18
Technical data .....	18
Compliance .....	18
Trademarks .....	18





# Wiser Fan Speed Controller



IH120001OF

## Safety Information

### Important Information

Read these instructions carefully and look at the equipment to become familiar with the device before trying to install, operate, service, or maintain it. The following special messages may appear throughout this manual or on the equipment to warn of potential hazards or to call attention to information that clarifies or simplifies a procedure.



The addition of either symbol to a “Danger” or “Warning” safety label indicates that an electrical hazard exists which will result in personal injury if the instructions are not followed.



This is the safety alert symbol. It is used to alert you to potential personal injury hazards. Obey all safety messages that accompany this symbol to avoid possible injury or death.

## **DANGER**

**DANGER** indicates a hazardous situation which, if not avoided, **will result in** death or serious injury.

**Failure to follow these instructions will result in death or serious injury.**

## ⚠ WARNING

**WARNING** indicates a hazardous situation which, if not avoided, **could result in** death or serious injury.

## ⚠ CAUTION

**CAUTION** indicates a hazardous situation which, if not avoided, **could result in** minor or moderate injury.

## NOTICE

NOTICE is used to address practices not related to physical injury.

## About the device

The Wiser Fan speed controller is a miniature micro module (hereinafter referred to as **Puck**), which is remotely controlled and designed to operate in AC mains. This device enables 4/5 step fan speed control. The fan speed is controlled by mobile app or fan regulator. The puck also operates as a repeater within the Z-Wave network it is associated, and uses the latest Z-Wave plus chip.

- 4-Step Fan regulator/5-Step Fan regulator

## Installing the device

Refer to the installation instruction supplied with this product.  
See *Wiser Fan Speed Controller*

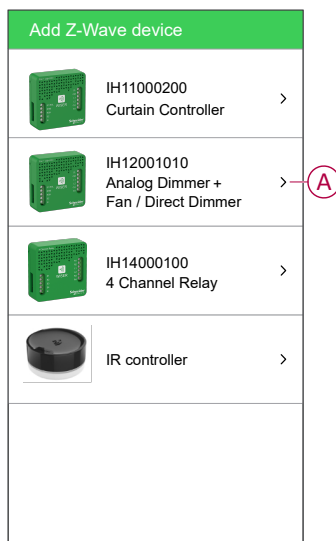
## Pairing the device

Using the Wiser India app, pair your puck with the **Gateway** to access and control the puck.

To pair the puck:

1. On the Home page, tap  **Device**.

2. Tap **Add>Schneider Electric > Fan/Dimmer (A)**.



The next screen shows the joining process of **Puck**.

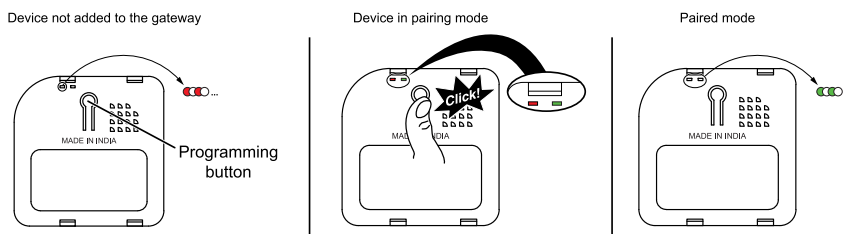
**NOTE:**

- The puck blinks red to show the device is not added to the gateway.
- For more information, refer to the pairing video [How to pair the micro module](#).
- For more information on pairing and configuration, refer to the video [wiring and configuration for 4 & 5 step fan regulator](#)

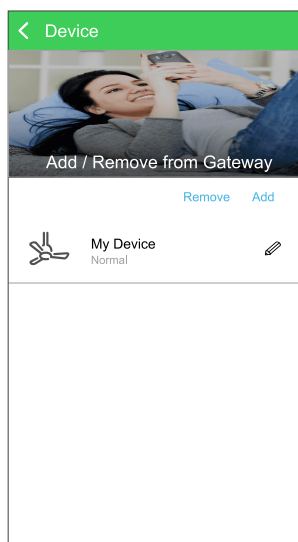
The gateway generates a "beep" sound.

3. Trigger the device by pressing on the **Programming button** on the back of the device and make sure the LED blinks green.

**NOTE:** If the puck device blinks red LED then it means that the device is not added to any gateway.



4. Wait for a few seconds until the LED turns green. You can also see in the app that the device is joined.





5. Tap **Next** to enter the name of the device and assign the device to a new room or an existing room.

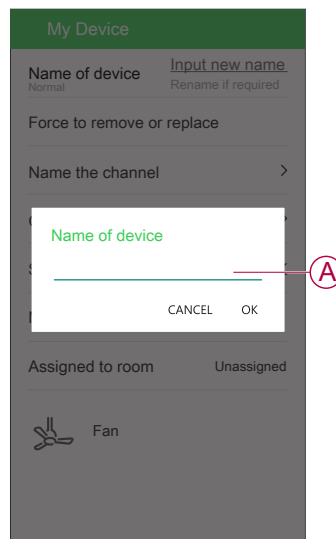
The **Puck** is now listed under **Device** page.

## Configuring the device

### Renaming the device


Rename the device using the Wiser India app.

1. On the Home page, tap .
2. Select the device which you want to rename.
3. Tap edit  next to the device name.
4. Select the **Input new name** to rename the device.
5. Tap **Name**, and enter the name and click **OK (A)**.

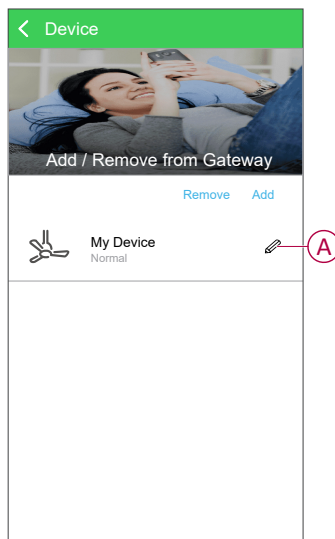


### Changing the device location

Using the Wiser India app, add the puck to any room (such as living room, bedroom, kitchen etc).

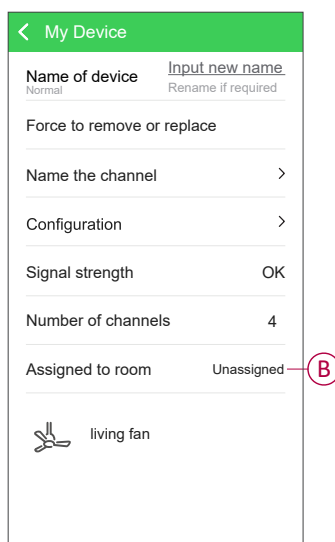
1. On the Home page, tap .
2. On the device page, select the device for which you wish to assign a different location.

### 3. My Device (A).



4. Select the **Assigned to room** to assign the puck to an existing room or a new room (B).

**NOTE:** **My Device** is the name given to the device by the user. Any name can be assigned by editing in the device option.

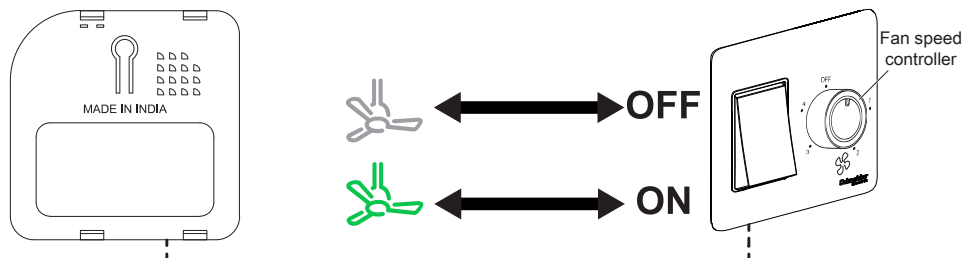


## Using the device

### Manual operation

When the puck is connected to a switch, the connected devices can be controlled manually by short pressing the switch to turn ON or OFF.

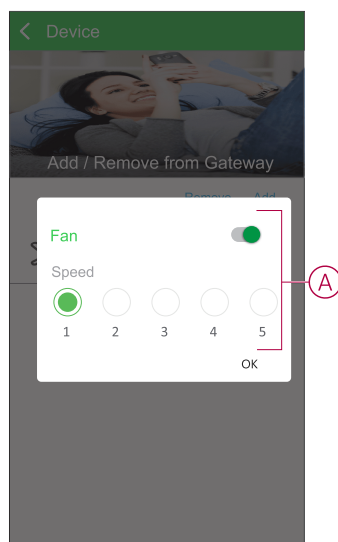
**NOTE:** When the puck is installed inside the wall box, the status LED is not visible while using the puck.



## Turning the device On/Off using app

Using the Wiser India app, you can turn on/off the light switch remotely.

1. On the **Home** page, tap **Device**.
2. In the device list, tap on **My device** or the name you have given to the device.
3. Use the **Toggle switch** to turn on/off the device and select the fan speed(A).
4. Tap **OK**.



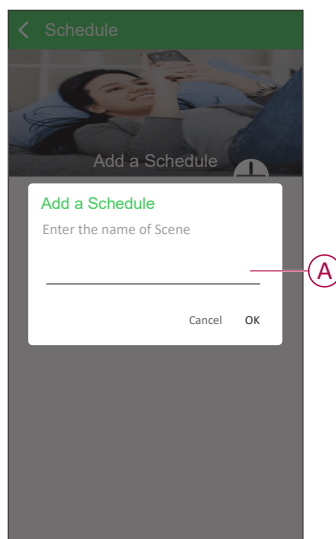
## Creating a schedule

The device can be fully controlled by schedule. Once the schedule is set, the device operates at a given time.

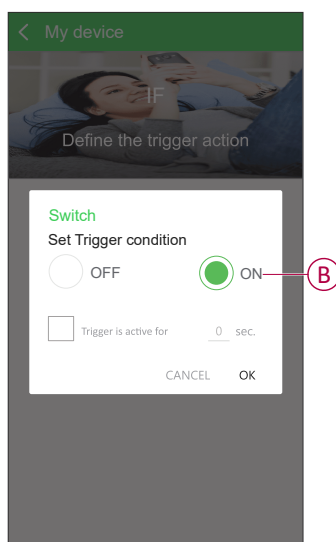
1. On the **Home** page, tap **Schedule** and tap to add the schedule.

**NOTE:** If there is an existing schedule in the list then the add icon will be in white.

2. Enter the name of the schedule (A).

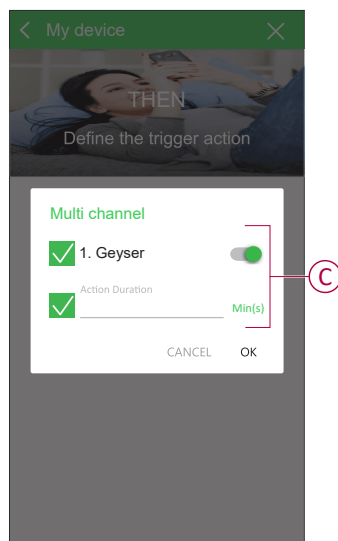


3. Go to the **IF** section and select the device you want under **Device**.
4. Set the trigger condition **ON** and click **OK** to finish (B).

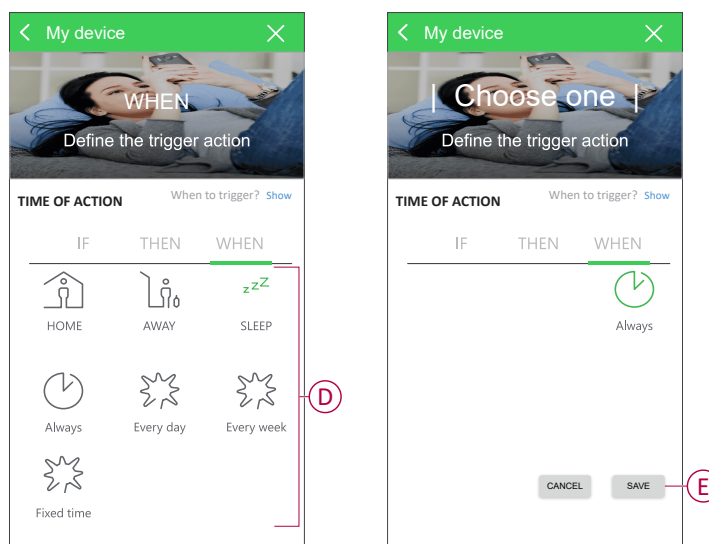


5. Go to the **THEN** tab and choose the same device selected in the **IF** section under **Device**.
6. Now select the **Action Duration** check box and enable the **Toggle switch**.

7. Set the action duration in Min(s) or Sec(s) or Hour(s) as per your need.-For example. 15 Min(s) (C).



8. Go to the **WHEN** tab and select the **TIME OF ACTION** (D) and tap **SAVE** (E).



The created schedule will be available in the **Schedule** page list.

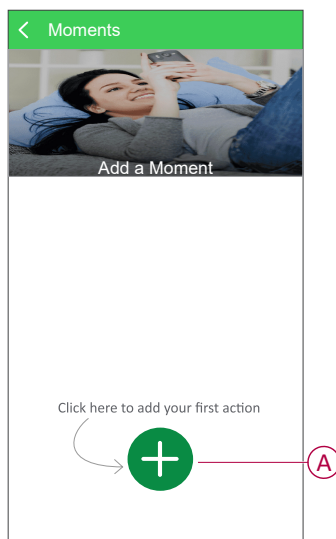
For more information on creating a schedule, refer to the video [How to create a schedule](#)

## Creating a moment

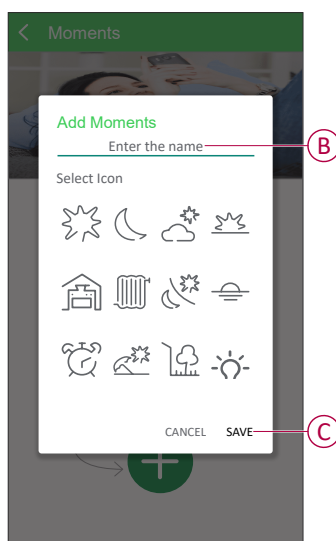
A Moment allows you to group multiple actions that are usually done together. Using the Wiser India app, you can create moments based on your needs.



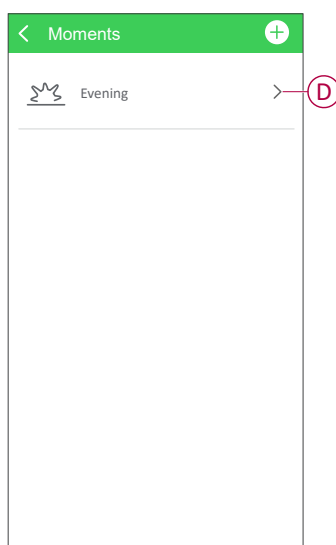
1. On the **Home** page, go to **Moments** > **+** to create a moment (A).



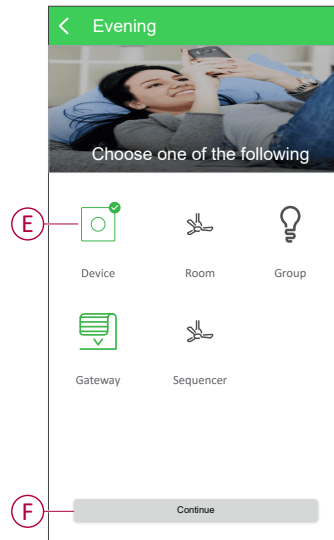
2. Tap **Enter the name** (B), type the name of the moment and select the icon and tap **SAVE** (C).



3. Tap on > beside the created moment name (D).

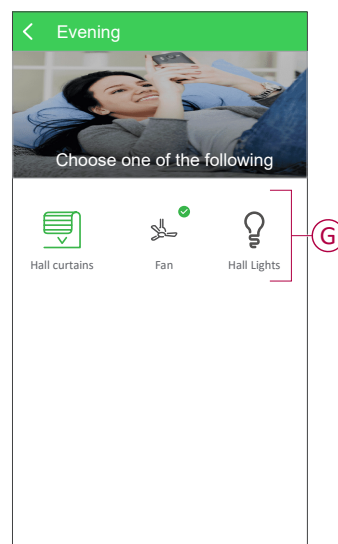


4. Tap **Device** and select the device to set the condition (E), tap **Continue** (F).

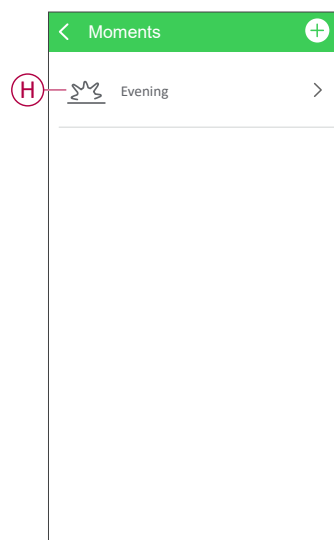


5. Set the condition and tap **OK** to finish. For example: Select Fan and choose the fan speed as 2 and tap **OK** to finish (G).

**NOTE:** To check the moments, turn off all the devices and run the scene.

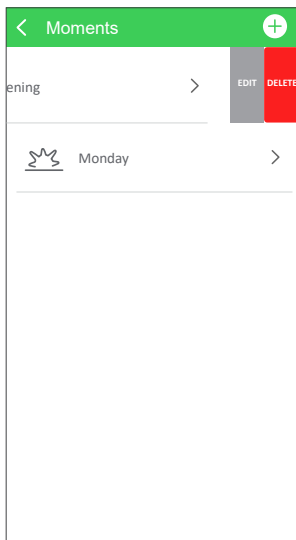


6. To run the moments, tap **Moments** and tap on the created moment icon (H).



## Editing a moment

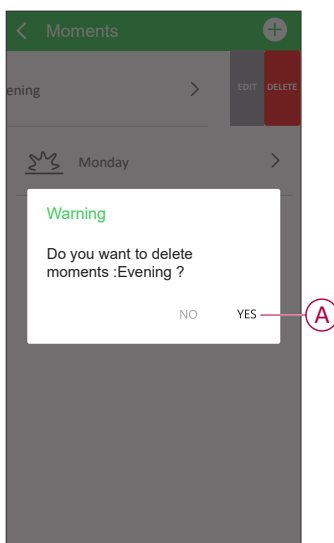
1. On the **Moments** page, locate the moment you want to edit.
2. Slide left on the selected moment, it will show the option to edit and delete, tap **EDIT**.
3. On the **EDIT** page, you can tap each item (Such as Dimmer, Fan, 4 channel relay, Curtain controller, etc.) to change the settings.



## Deleting a moment

1. On the **Moments** page, locate the moment you want to delete.
2. Slide left on the selected moment, it will show the option to edit and delete, tap **DELETE**.
3. It will show a **Warning** pop-up, you can tap **YES** to delete the moment (A).


**NOTE:** After deleting a moment, the device action can no longer be triggered.

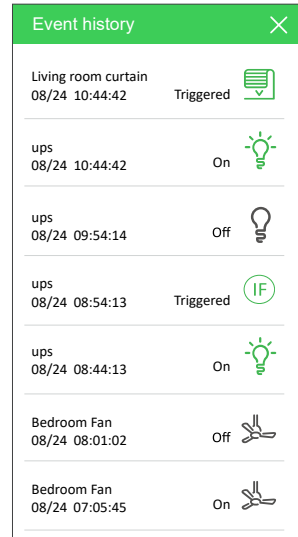


## Checking the device history

Using the Wiser India app, you can monitor the device history.

To see the device history :


1. On the **Home** page, tap .
2. On the **Settings** page, tap **Event history**.
3. In the **Event history** page, you can see all the device status.



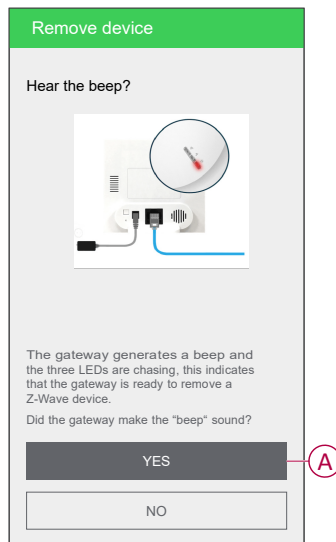
## Removing the device

Using the Wiser India app, you can remove a device from the device list.

To remove the device:

1. On the **Home** page, tap  **Device**.

2. Tap **Remove** > **Other Z-Wave device** > **YES** (If you heard the beep sound).



**TIP:** Alternatively, on the **Home** page, tap , tap  on the device you want to delete and tap **Force to remove or replace** > **Remove**.

**NOTE:**

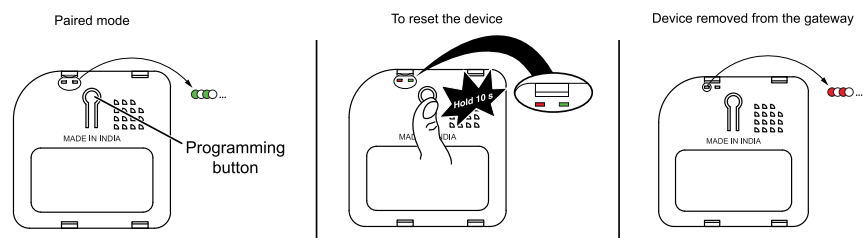
- Removing the device will reset the Puck. After reset the LED turns RED indicating that the Puck is ready to pair with another network.
- For more information, please refer to the video: [How to remove the device](#).

## Resetting the device

You can reset the device to factory default manually.

For resetting the micro module:

1. Press and hold the **Programming** button for <10 s.
2. After 10 s, LED starts blinking red then release the programming button.





**NOTE:** All configuration data, user data, and network data are deleted. After which


- No connectivity to other devices or rooms
- No moment or schedule settings

## LED indication

### Pairing the device

User Action	LED Indication	Status
>Short press the programming button 3 times.	Both red and green LED's glows constantly. 	Pairing mode is active. When pairing is completed, LED blinks green continuously. 

### Resetting the device

User Action	LED Indication	Status
>Short press the programming button 3 times or hold it down once for > 10 s.	LED blinks red once per second. 	The device is in reset mode. The device then restarts indicating that the device is ready for pairing.

## Technical data

Power input	100-240 V AC, 50/60 Hz
Maximum Fan Load	120 W (1 Fan per module)
Power consumption	< 0.5 W (No load) < 0.9 W (load)
Operating temperature	-10 to +35 °C
Power consumption	< 0.5 W no load < 0.9 W load
Operating Temperature	-10 °C to +35 °C
Relative humidity	8-80 RH
RF frequency	865.22 MHz for India
Typical line of sight range	Up to 20 m In open area — Indoor** Up to 30 m In open area — Outdoor**
Gateway height	3 to 5 ft from the ground
Plastic housing	Fire retardant ABS
IP rating	IP20
Product dimensions (H x W x D)	49 mm x 49 mm x 18 mm
RoHS/ REACH	Components are RoHS and REACH certified
Maximum Fixing Screw	0.4 Nm (3.5 Lb-In)
Terminal Sizes / Number	7 left side and 4 right side
Size & Type of Cable	Copper 1.5 mm <sup>2</sup>
Communication protocol	Z-Wave
Fan type	Ceiling Fan

## Compliance

## Trademarks

This guide makes reference to system and brand names that are trademarks of their relevant owners.

- Z-Wave® is a registered trademark of the Connectivity Standards Alliance.
- Apple® and App Store® are brand names or registered trademarks of Apple Inc.
- Google Play™ Store and Android™ are brand names or registered trademarks of Google Inc.
- Wiser™ is a trademark and the property of Schneider Electric, its subsidiaries and affiliated companies.

Printed in:  
Schneider Electric  
35 rue Joseph Monier  
92500 Rueil Malmaison - France  
+ 33 (0) 1 41 29 70 00

Schneider Electric  
35 rue Joseph Monier  
92500 Rueil Malmaison  
France

+ 33 (0) 1 41 29 70 00

[www.se.com](http://www.se.com)

As standards, specifications, and design change from time to time,  
please ask for confirmation of the information given in this publication.

© 2023 – 2023 Schneider Electric. All rights reserved.

DUG\_Wiser Fan Speed Controller\_WI-00