

Iconic Connected AC Fan Speed Controller BLE

Device user guide

Information about features and functionality of the device.

06/2024



Legal Information

The information provided in this document contains general descriptions, technical characteristics and/or recommendations related to products/solutions.

This document is not intended as a substitute for a detailed study or operational and site-specific development or schematic plan. It is not to be used for determining suitability or reliability of the products/solutions for specific user applications. It is the duty of any such user to perform or have any professional expert of its choice (integrator, specifier or the like) perform the appropriate and comprehensive risk analysis, evaluation and testing of the products/solutions with respect to the relevant specific application or use thereof.

The Schneider Electric brand and any trademarks of Schneider Electric SE and its subsidiaries referred to in this document are the property of Schneider Electric SE or its subsidiaries. All other brands may be trademarks of their respective owner.

This document and its content are protected under applicable copyright laws and provided for informative use only. No part of this document may be reproduced or transmitted in any form or by any means (electronic, mechanical, photocopying, recording, or otherwise), for any purpose, without the prior written permission of Schneider Electric.

Schneider Electric does not grant any right or license for commercial use of the document or its content, except for a non-exclusive and personal license to consult it on an "as is" basis.

Schneider Electric reserves the right to make changes or updates with respect to or in the content of this document or the format thereof, at any time without notice.

To the extent permitted by applicable law, no responsibility or liability is assumed by Schneider Electric and its subsidiaries for any errors or omissions in the informational content of this document, as well as any non-intended use or misuse of the content thereof.

Table of Contents

Safety Information.....	4
Iconic Connected AC Fan Speed Controller.....	5
For your safety	5
About the device.....	5
Installing the device	6
Pairing the device manually.....	6
Manual operation.....	7
Configuring the device	8
Changing the device icon	8
Renaming the device	9
Changing the device location	9
Fan controller settings.....	10
Changing the Mode.....	11
LED Indicator Settings.....	11
Synchronization Time.....	12
Manage Paired Phone.....	12
Device Orientation	12
Reset device settings	13
Using the Device	13
Operating the device using app.....	14
Setting timer mode.....	14
Removing the device	15
Resetting the device manually	16
LED indication	16
Troubleshooting	17
Technical Data	18
Compliance.....	19
Compliance information for Green Premium products.....	19
Trademarks.....	19

Safety Information

Important Information

Read these instructions carefully and look at the equipment to become familiar with the device before trying to install, operate, service, or maintain it. The following special messages may appear throughout this manual or on the equipment to warn of potential hazards or to call attention to information that clarifies or simplifies a procedure.



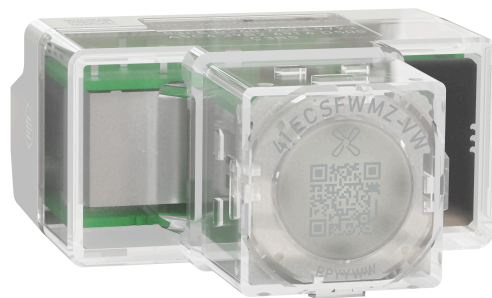
The addition of either symbol to a “Danger” or “Warning” safety label indicates that an electrical hazard exists which will result in personal injury if the instructions are not followed.



This is the safety alert symbol. It is used to alert you to potential personal injury hazards. Obey all safety messages that accompany this symbol to avoid possible injury or death.

<div>⚡⚠ DANGER</div> <div> <p>DANGER indicates a hazardous situation which, if not avoided, will result in death or serious injury.</p> <p>Failure to follow these instructions will result in death or serious injury.</p> </div>
<div>⚠ WARNING</div> <div> <p>WARNING indicates a hazardous situation which, if not avoided, could result in death or serious injury.</p> </div>
<div>⚠ CAUTION</div> <div> <p>CAUTION indicates a hazardous situation which, if not avoided, could result in minor or moderate injury.</p> </div>
<div>NOTICE</div> <div> <p>NOTICE is used to address practices not related to physical injury.</p> </div>

Iconic Connected AC Fan Speed Controller



41ECSFWM-VW

For your safety

⚠ DANGER

HAZARD OF ELECTRIC SHOCK, EXPLOSION, OR ARC FLASH

- It is illegal for persons other than an appropriately licensed electrical contractors or other persons authorised by legislation to work on the fixed wiring of any electrical installation.
- To comply with all safety standards, the device must be used only for the purpose described in this instruction and must be installed in accordance with the wiring rules and regulation in the location where it is installed.
- Lock out and tag the input circuit before accessing the wiring connections.
- The Locking Bar on the grids must be set to the Closed position to ensure that the device cannot be removed during normal operation.
- There are no user serviceable parts inside the device.

Failure to follow these instructions will result in death or serious injury.

NOTICE

EQUIPMENT DAMAGE HAZARD (LOAD AND OPERATION)

- Operation of the device at elevated temperatures or voltages outside of specification (240 V A.C. and 25 °C) may cause the over-temperature protection circuitry to operate.
- Reduce the size of the connected load or use a different brand of fan to prevent recurrence.
- Do not operate the product for prolonged periods in extreme conditions.

Failure to follow these instructions can result in equipment damage.

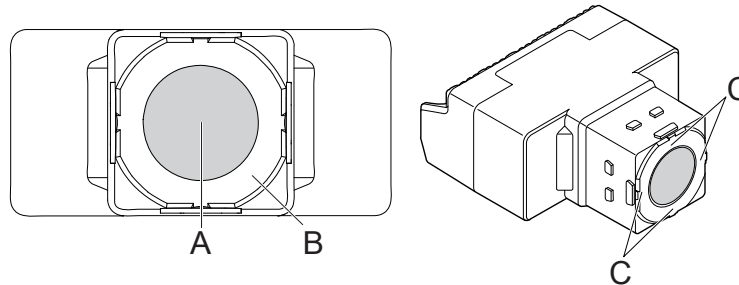
About the device

Iconic Connected AC Fan Speed Controller, Bluetooth (hereinafter referred to as **fan controller**) can control up to two fans and in three steps, you can adjust the fan speed to achieve your desired comfort. You can also control the fan using Wiser app.

Connect the fan controller directly to your mobile device via Bluetooth.

Operating elements

- A. Push-button
- B. Status LED (Amber, Green, and Red LED)
- C. Speed indicating LEDs



NOTE:

- The LED position will change when the fan controller is installed in a different orientation. To maintain same LED position with change in orientation, refer to the orientation settings.
- For information on LED during each control stage, refer LED indication, page 16.

Installing the device


Refer to the installation instruction supplied with this product.

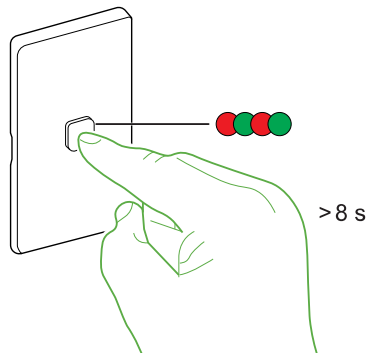
See Connected AC Fan Speed Controller, BLE.

Pairing the device manually

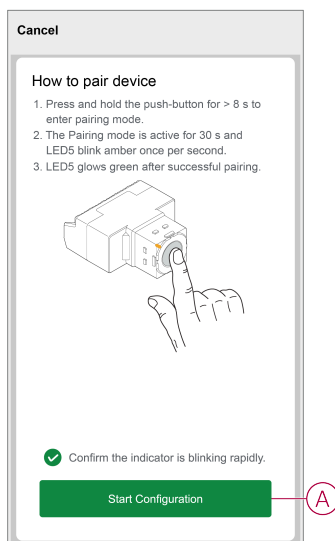
Using the Wiser app, you can pair the device with smartphone to access and control the device.

NOTE: When pairing the Bluetooth™ device with the Wiser app, be within a range of 8 to 10 m of the module. Range can be affected by wall thickness and construction materials.


1. On **Home** page, tap **+** then tap **Iconic A.C. fan controller BLE** .
2. Press and hold the push-button for > 8 s to enter pairing mode.
LED blinks red/green per second



3. In the app, select **Confirm the indicator blinking rapidly** and tap **Start Configuration (A)**.



NOTE: Enable permissions to nearby devices and Bluetooth™ for scanning the device.

4. Tap  to select and add the device from the list and then tap **Next > Done**.

NOTE: The device can be paired with max. 8 smartphones. To pair an additional phone, you must unpair one of the existing phones. Refer managed paired phones, page 12.

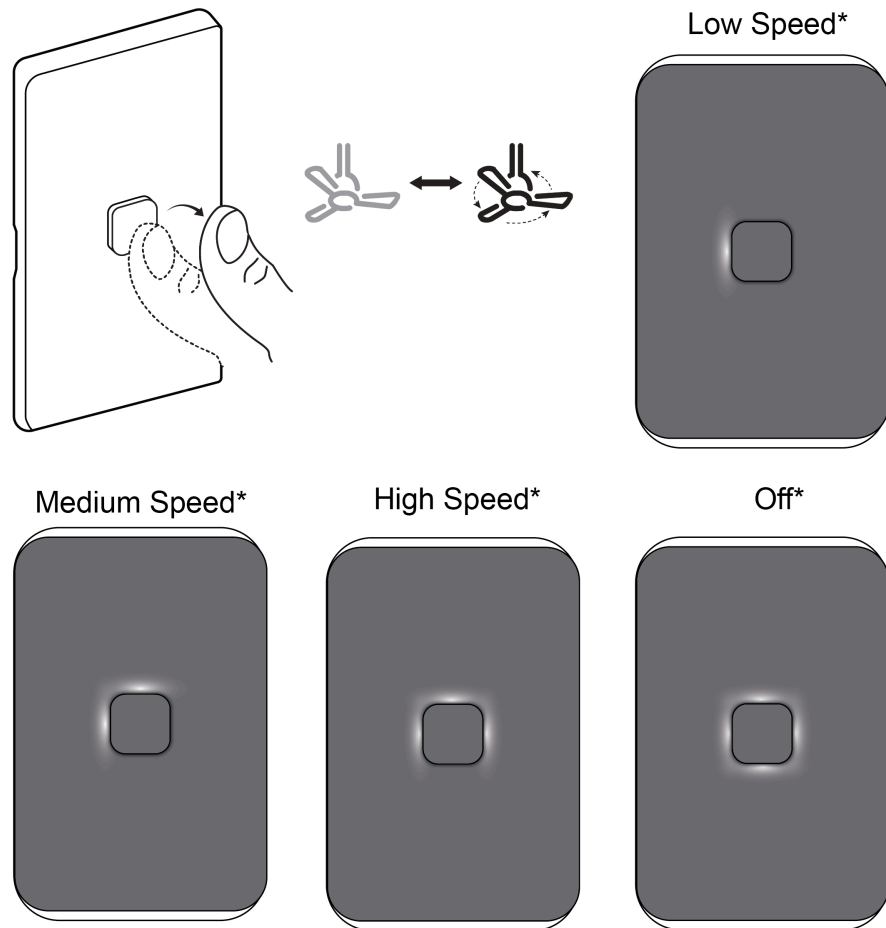
Manual operation

You can turn on/off or control the fan speed manually.

Shortly press the push button to turn on the fan at low speed, then press it again to change the speed to medium and then again to high.

Press and hold the push-button for 1 s to turn off the fan.

You can also turn off the fan by short pressing the push button once when it is at high speed.



*LED Orientation - Horizontal Right



TIP: You can change LED behavior in Wiser app setting:

For Bluetooth, refer Bluetooth LED indication setting, page 11.

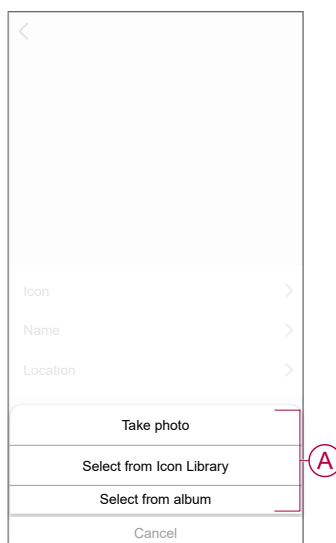
Configuring the device

Changing the device icon

You can change the device icon using the Wiser app.



1. On the **Home** page, select the device for which you wish to change the icon.
2. At the top-right corner of the screen, tap .
3. Tap edit  next to the device name.
4. Tap **Icon** to view the menu.

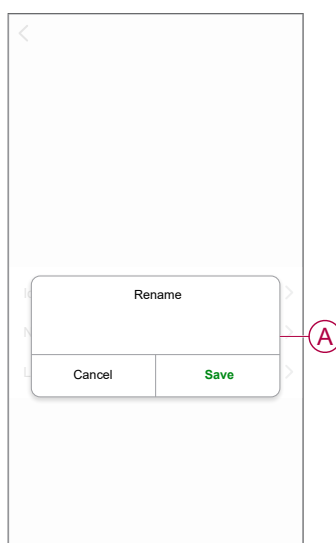
5. In the slide-up menu, select any one of the following (A) to change the device icon:
 - **Take photo** - allows you to take a photo with your device camera.
 - **Select from Icon Library** - allows you to select an icon from the app library.
 - **Select from Album** - allows you to select a photo from the mobile gallery.



Renaming the device



You can rename the device using the Wiser app.


1. On the **Home** page, select the device for which you wish to rename.
2. At the top-right corner of the screen, tap .
3. Tap edit  next to the device name.
4. Tap **Name**, enter the new name (A) and then tap **Save**.



Changing the device location

You can change the device location using the Wiser app.







1. On the **Home** page, select the device for which you wish to change the location.
2. At the top-right corner of the screen, tap .
3. Tap edit  next to the device name.
4. Tap **Location**.
5. Select the desired location from the list (A) and then tap **Save**.

< Device location	Save
Living Room <input type="radio"/>	
Master Bedroom <input type="radio"/>	
Kitchen <input type="radio"/>	
Dining Room <input type="radio"/>	
Study Room <input type="radio"/>	
Kids Room <input type="radio"/>	

Fan controller settings

Using The Wiser app, you can manage the Dimmer modes and settings.

1. On the **Home** page, tap **All devices > Iconic Fan Controller**.
2. Tap **Settings** and select any of the following:
 - Mode, page 11 (A)
 - LED Indicator Settings, page 11 (B)
 - Synchronization Time, page 12 (C)
 - Manage Paired Phone, page 12 (D)
 - Device Orientation, page 12 (E)
 - Reset Device Settings, page 13 (F)

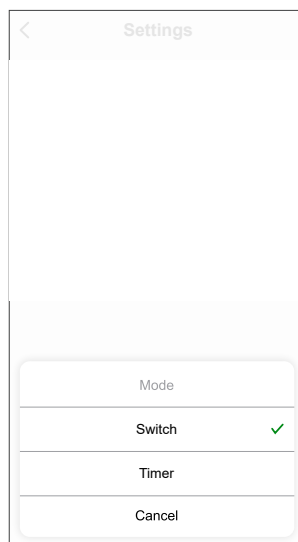
< Settings	
Mode Selection Timer 	
Indicator status On with timeout 	
Synchronization Time 	
Manage Paired Phone 	
Device Orientation Horizontal Left 	
Factory default 	

Changing the Mode

Using mode setting, timer can be set to turn off the device after a set period of time or you can set it as a switch to turn on/off manually.

On the **Settings** page, tap **Mode** and select any of the following:

- **Switch:** control the speed and turn on/off of the fan.
- **Timer:** when fan is running, set the timer to turn off. Refer using mode timer, page 14.

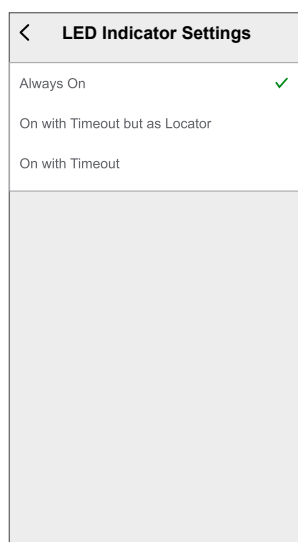


LED Indicator Settings

You can select the LED indicator mode for easy identification of the device status.

On the **Settings** page, tap **LED Indicator Settings** and select any of the following:

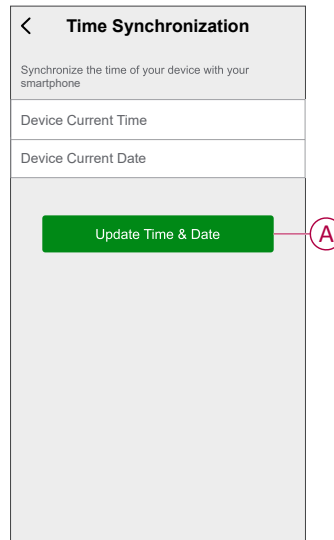
- **Always On:** LED on the device is always turned on.
- **On with Timeout but as Locator:** LED glow in lesser brightness after the time out.
- **On with Timeout:** After inactive period LED turns off.



Synchronization Time

Using Wiser app, you can synchronize the time of the device with your smartphone.

On the **Settings** page, tap **Synchronization Time** > **Update Time & Date** (A). This allows the device time to sync with smartphones in real-time.

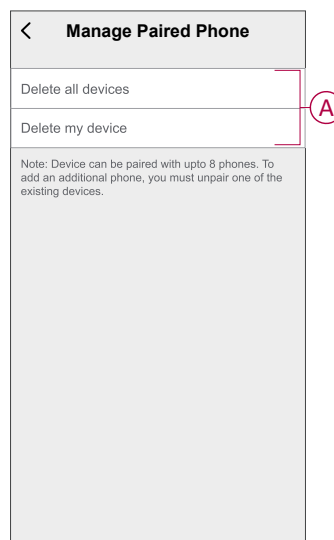


Manage Paired Phone

Using Wiser app, you can view or delete paired phones.

On **Settings** page, tap **Manage Paired Phone** and select any of the following (A):

- **Delete all Devices:** the device is removed from all paired phones.
- **Delete my Device:** the device is removed from current phone.

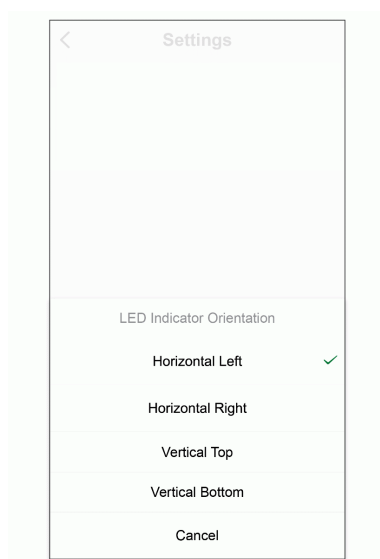


Device Orientation

The Fan Controller can be installed in 4 different orientations. This feature allows the user/installer to select the orientation of the low/medium/high speed LEDs to maintain the same sequence across different fan controllers.

On the **Settings** page, tap **Device Orientation** and select any of the following:

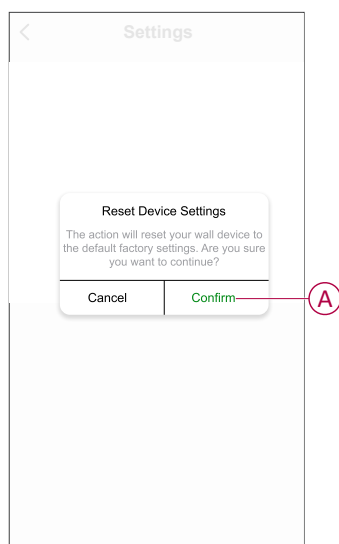
- **Horizontal Left**
- **Horizontal Right**
- **Vertical Top**
- **Vertical Bottom**



Reset device settings

Using Wiser app, you can reset the device settings to default.

On **Settings** page, tap **Reset device settings**.
Read the information and tap **Confirm** (A).



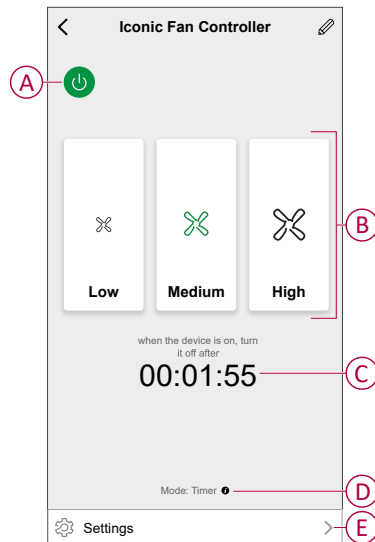
NOTE: This action will reset the device to default factory settings.

Using the Device

On the **Home** page, tap **All devices > Iconic Fan Controller** to access the control panel.

On the fan controller control panel page, you can see the following:

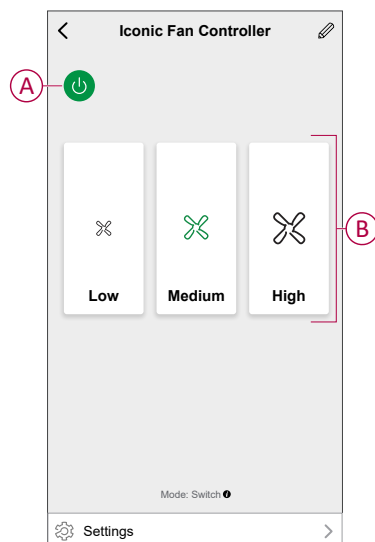
- Power button (A)
- Fan speed (B)
- Mode timer, page 14 (C)
- Mode indicator, page 11 (D)
- Settings (E)



Operating the device using app

Using the Wiser app, you can turn on/off and regulate the fan speed.

1. On Home page, select the fan controller and tap power button (A) to turn on/off the fan.
2. Once fan is turned on, select the required speed (B).



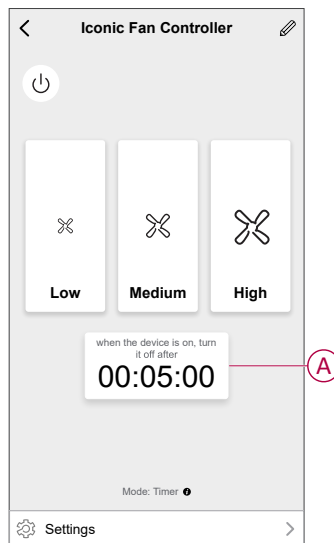
NOTE: During timer mode, the fan controller automatically turns off after a specified period of time. Refer Using timer mode, page 14.

Setting timer mode

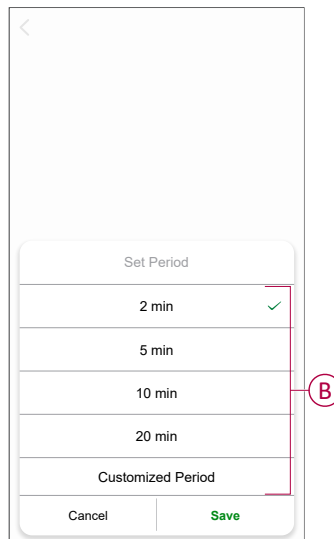
You can set the timer to turn off the device after a certain period of time.

In Wiser app, change the mode from switch to timer, refer to [mode settings](#), page 11.

1. On the device control panel page, tap timer (A) for the slide-up menu.



2. In the slide-up menu select the required **Set Period** (B) and tap **Save**.




NOTE: The timer mode will be stopped automatically at the end of the countdown timer. If the timer mode feature is enabled, and there are one or more Schedule/Moment/Automation actions in this period, then the system will stop the current mode action immediately, and perform the new actions (the new action always has a higher priority than the current action).

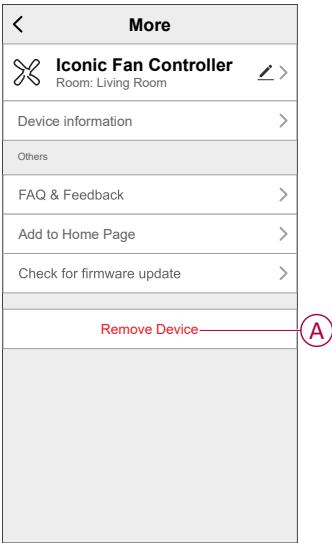
Once the countdown timer reaches zero, the device turns off.

Removing the device

Using the Wiser app, you can remove a device from the device list.

1. On the **Home** page, tap **All devices** > **Iconic Fan Controller**.
2. Tap  to display more details.

3. Tap **Remove device** (A) and select any of the following:
- **Disconnect**: to remove the device.
 - **Disconnect & Erase Data**: to remove the device and erase data.



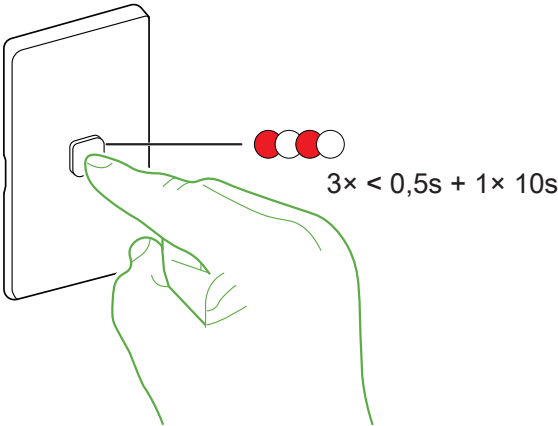
TIP: On the **Home** page, tap and hold the **Iconic Fan Controller** to remove the device.

Resetting the device manually

You can reset the device to factory default manually.



Short press the push button three times (<0,5 s) and then long press the push button once (>10 s).

After 10 s, release the push button when the LED starts blinking red.




LED indication

Pairing the device

User Action	LED Indication	Status
Press and hold the push button for > 8 s times.	LED blinks red green. 	Pairing mode is active for 30 seconds. When pairing is completed, LED glows green for a few seconds before turning Off. 

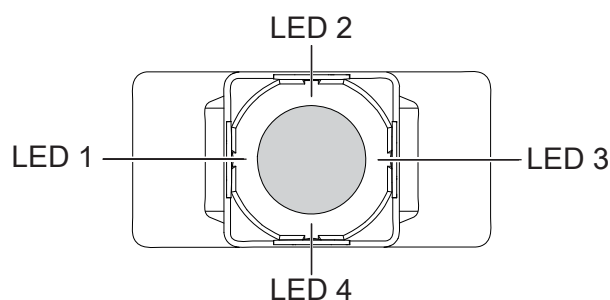
Resetting the device

User Action	LED Indication	Status
Short press the push button 3 times and hold it down once for > 10 s.	LED blinks red once per second. 	The device is reset to the factory settings after 10 seconds and the device turns off.

LED indicator mode

LED indicator mode	Speed	LEDs	Timeout	Locator*
Always On	Low	LED1	0	No
	Medum	LED1 and LED2		
	High	LED1, LED2, and LED3		
	Off	LED1, LED2, LED3, and LED4		
Act as a Locator	Low	LED1	5 s	Yes
	Medum	LED1 and LED2		
	High	LED1, LED2, and LED3		
	Off	LED1, LED2, LED3, and LED4		
On with Timeout	Low	LED1	5 s	No
	Medum	LED1 and LED2		
	High	LED1, LED2, and LED3		
	Off	LED1, LED2, LED3, and LED4		
*Glows all four LEDs in lesser brightness after the time out				

LED Orientation - Horizontal Left*



*LED position may vary depending on orientation.

Troubleshooting

Symptom	Solution
No fan movement or uncontrolled movement.	<ul style="list-style-type: none"> Check power supply. Check the wiring. Check the load
The device is not ready to pair after the device is removed from the app.	Reset to factory default settings, refer to resetting the device manually, page 16.

Technical Data

Technical data

Operating Voltage	220 - 240 V AC. , 50 Hz
Load rating	Total max.150 W
Number of Fans	Max. 2
Switching Technique	Relay

Protection

Over Temperature	Yes
Short circuit	No
Over-current fuse	No
Thermal protection	Yes
LED Indicator	Yes
Multi-gang plate capacity	Max 3 primary fan controllers per plate
Compatible plate ranges	Iconic, Iconic Style, Iconic Essence, Pro Series
Mounting Centres	84 mm pattern plate
Environmental Rating	IP20


Ambient operating

Humidity	5%–90% RH, non-condensing
Temperature	-10 to +50 °C

41ECSFWM-VW

Communication protocol	Bluetooth low energy
------------------------	----------------------

Compliance

Product certification	RCM 
Safety	AS/NZS 60669.2.1
EMC	AS/NZS 60669.2.1
RF	AS/NZS 4268, AS 2772.2

Compliance

Compliance information for Green Premium products

Find and download comprehensive information about Green Premium products, including RoHS compliance and REACH declarations as well as Product Environmental Profile (PEP) and End-of-Life instructions (EOLI).

<https://checkaproduct.se.com/>



General information about Green Premium products

Click the link below to read about Schneider Electric's Green Premium product strategy.

<https://www.schneider-electric.com/en/work/support/green-premium/>



Trademarks

This guide makes reference to system and brand names that are trademarks of their relevant owners.

- Bluetooth® is a registered trademark of the Bluetooth Special Interest Group (SIG).
- Apple® and App Store® are brand names or registered trademarks of Apple Inc.
- Google Play™ Store and Android™ are brand names or registered trademarks of Google Inc.
- Wi-Fi® is a registered trademark of Wi-Fi Alliance®.
- Wiser™ is a trademark and the property of Schneider Electric, its subsidiaries and affiliated companies.

Other brands and registered trademarks are the property of their respective owners.

Schneider Electric (Australia) Pty Ltd
33-37 Port Wakefield Road
Gepps Cross SA 5094
Australia

Customer Care: 13 73 28

www.clipsal.com

As standards, specifications, and design change from time to time,
please ask for confirmation of the information given in this publication.

© 2024 – 2024 Schneider Electric. All rights reserved.

DUG_AC Fan Controller_Pacific_WSE-00