

Iconic Connected Switch 2AX BLE

Device user guide

Information about features and functionality of the device.

04/2025



Legal Information

The information provided in this document contains general descriptions, technical characteristics and/or recommendations related to products/solutions.

This document is not intended as a substitute for a detailed study or operational and site-specific development or schematic plan. It is not to be used for determining suitability or reliability of the products/solutions for specific user applications. It is the duty of any such user to perform or have any professional expert of its choice (integrator, specifier or the like) perform the appropriate and comprehensive risk analysis, evaluation and testing of the products/solutions with respect to the relevant specific application or use thereof.

The Schneider Electric brand and any trademarks of Schneider Electric SE and its subsidiaries referred to in this document are the property of Schneider Electric SE or its subsidiaries. All other brands may be trademarks of their respective owner.

This document and its content are protected under applicable copyright laws and provided for informative use only. No part of this document may be reproduced or transmitted in any form or by any means (electronic, mechanical, photocopying, recording, or otherwise), for any purpose, without the prior written permission of Schneider Electric.

Schneider Electric does not grant any right or license for commercial use of the document or its content, except for a non-exclusive and personal license to consult it on an "as is" basis.

Schneider Electric reserves the right to make changes or updates with respect to or in the content of this document or the format thereof, at any time without notice.

To the extent permitted by applicable law, no responsibility or liability is assumed by Schneider Electric and its subsidiaries for any errors or omissions in the informational content of this document, as well as any non-intended use or misuse of the content thereof.

Table of Contents

Safety Information.....	4
Iconic Connected Switch 2AX.....	5
For your safety	5
About the device.....	5
Installing the device	6
Pairing the device manually.....	6
Switching on/off the device manually.....	6
Configuring the device	7
Changing the device icon	7
Renaming the device	7
Changing the device location	8
Switch settings	9
Changing the Mode.....	9
LED Indicator Settings.....	10
Synchronization Time.....	10
Manage Paired Phone.....	11
Reset device settings	11
Using the device	11
Switching on/off the device using app	12
Setting timer mode.....	12
Creating a schedule	13
Removing the device	15
Resetting the device manually	15
LED Indication.....	16
Troubleshooting	16
Technical data	17
Compliance.....	18
Product Environmental Data	18
Trademarks	18

Safety Information

Important Information

Read these instructions carefully and look at the equipment to become familiar with the device before trying to install, operate, service, or maintain it. The following special messages may appear throughout this manual or on the equipment to warn of potential hazards or to call attention to information that clarifies or simplifies a procedure.



The addition of either symbol to a “Danger” or “Warning” safety label indicates that an electrical hazard exists which will result in personal injury if the instructions are not followed.



This is the safety alert symbol. It is used to alert you to potential personal injury hazards. Obey all safety messages that accompany this symbol to avoid possible injury or death.

DANGER

DANGER indicates a hazardous situation which, if not avoided, **will result in** death or serious injury.

Failure to follow these instructions will result in death or serious injury.

WARNING

WARNING indicates a hazardous situation which, if not avoided, **could result in** death or serious injury.

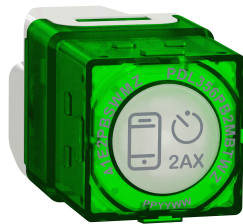
CAUTION

CAUTION indicates a hazardous situation which, if not avoided, **could result in** minor or moderate injury.

NOTICE

NOTICE is used to address practices not related to physical injury.

Iconic Connected Switch 2AX



41E2PBSWM-VW

For your safety

⚠ DANGER

HAZARD OF ELECTRIC SHOCK, EXPLOSION, OR ARC FLASH

- It is illegal for persons other than an appropriately licensed electrical contractors or other persons authorised by legislation to work on the fixed wiring of any electrical installation.
- To comply with all safety standards, the device must be used only for the purpose described in this instruction and must be installed in accordance with the wiring rules and regulation in the location where it is installed.
- Lock out and tag the input circuit before accessing the wiring connections.
- The Locking Bar on the grids must be set to the Closed position to ensure that the device cannot be removed during normal operation.
- There are no user serviceable parts inside the device.

Failure to follow these instructions will result in death or serious injury.

NOTICE

EQUIPMENT DAMAGE HAZARD (LOAD AND OPERATION)

- Operation of the device at elevated temperatures or voltages outside of specification (240 V A.C. and 25 °C) may cause the over-temperature protection circuitry to operate.
- Reduce the size of the connected load or use a different brand of fan to prevent recurrence.
- Do not operate the product for prolonged periods in extreme conditions.

Failure to follow these instructions can result in equipment damage.

About the device

The Iconic Connected Switch 2AX operates as a switch “out-of-the-box”, with no configuration needed. The switch is available with Bluetooth connectivity.

The switch can be paired to a mobile phone and the Wiser by SE app. In this case, the switch can be optionally configured as a delay timer/run-on timer. The switch LED indicator behaviour can also be configured, if desired.

Installing the device


Refer to the installation instruction supplied with this product.

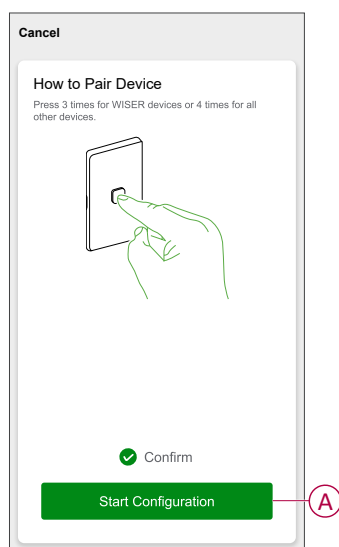
See Iconic Connected Switch 2AX.

Pairing the device manually


Using the Wiser app, you can pair the device with smartphone to access and control the device.

NOTE: When pairing the Bluetooth device with the Wiser app, be within a range of 8 to 10 m of the module. Range can be affected by wall thickness and construction materials.

1. On **Home** page, tap **+** then tap .
2. Short press the push-button 3 times (< 0,5 s). In the app, select **Confirm** and tap **Start Configuration (A)**.



NOTE: Enable permissions to nearby devices and Bluetooth for scanning the device.

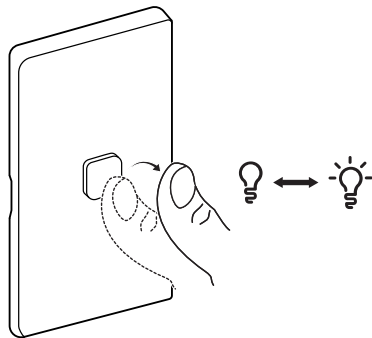
3. Tap  to select and add the device from the list and then tap **Next > Done**.

NOTE: The device can be paired with max. 8 smartphones. To pair an additional phone, you must unpair one of the existing phones. Refer managed paired phones, page 11.

Switching on/off the device manually

You can switch on/off the device manually. The device will provide power to the electrical appliance connected to it.



Short press the push button once to turn on/off the iconic switch.

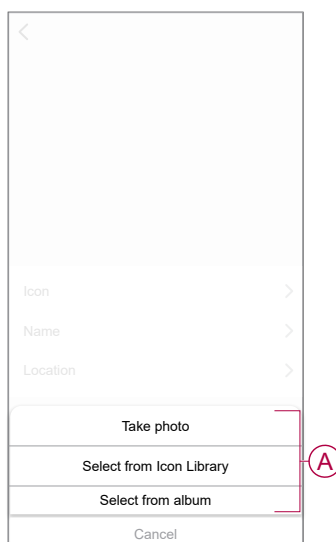


Configuring the device

Changing the device icon

You can change the device icon using the Wiser app.



1. On the **Home** page, select the device for which you wish to change the icon.
2. At the top-right corner of the screen, tap .
3. Tap edit  next to the device name.
4. Tap **Icon** to view the menu.
5. In the slide-up menu, select any one of the following (A) to change the device icon:
 - **Take photo**: Allows you to take a photo with your mobile camera.
 - **Select from Icon Library**: Allows you to select an icon from the app library.
 - **Select from album**: Allows you to select a photo from the mobile gallery.

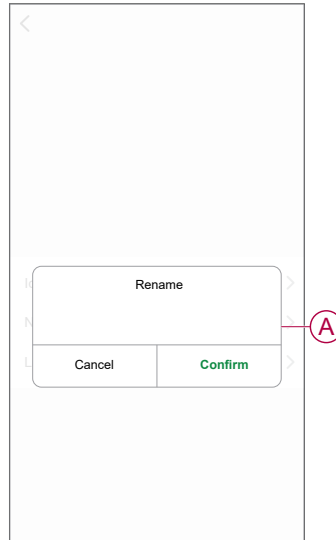


Renaming the device

You can rename the device using the Wiser app.



1. On the **Home** page, select the device for which you wish to rename.

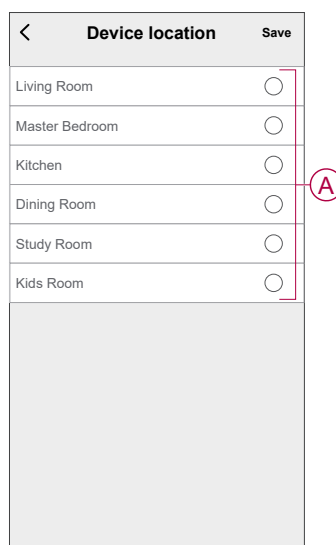
- At the top-right corner of the screen, tap .
- Tap edit  next to the device name.
- Tap **Name**, enter the new name (A) and then tap **Confirm**.



Changing the device location

You can change the device location using the Wiser app.

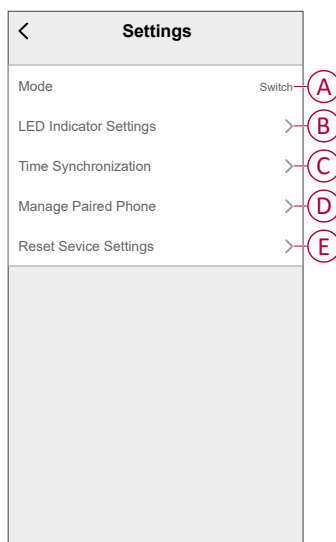
- On the **Home** page, select the device for which you wish to change the location.
- At the top-right corner of the screen, tap .
- Tap edit  next to the device name.
- Tap **Location**.
- Select the desired location from the list (A) and then tap **Save**.



Switch settings

Using the Wiser app, you can manage the switch modes and settings.

1. On the **Home** page, tap **All devices** > **Iconic Switch**.
2. Tap **Settings** and select any of the following:
 - Mode, page 9 (A)
 - LED Indicator Settings, page 10 (B)
 - Synchronization Time, page 10 (C)
 - Manage Paired Phone, page 11 (D)
 - Reset Device Settings, page 11 (E)

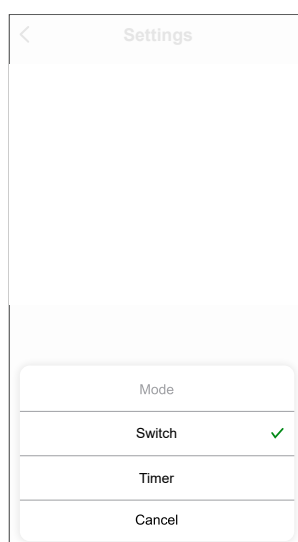


Changing the Mode

Using mode setting, timer can be set to turn off the device after a set period of time or you can set it as a switch to turn on/off manually.

On the **Settings** page, tap **Mode** and select any of the following:

- **Switch:** control the speed and turn on/off of the fan.
- **Timer:** when fan is running, set the timer to turn off. Refer using mode timer, page 12.

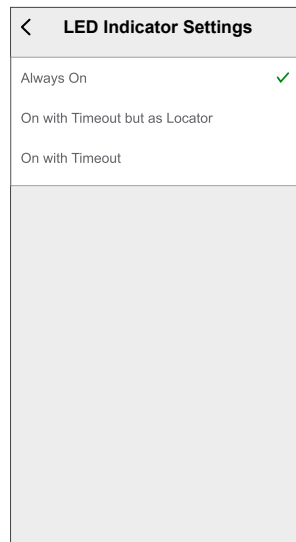


LED Indicator Settings

You can select the LED indicator mode for easy identification of the device status.

On the **Settings** page, tap **LED Indicator Settings** and select any of the following:

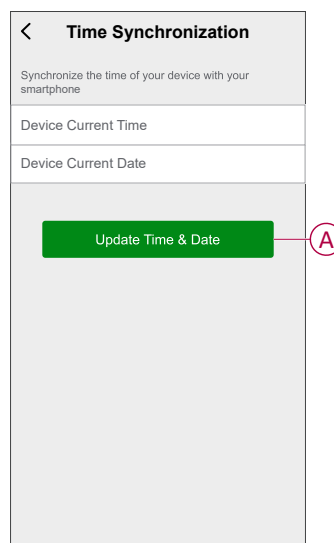
- **Always On:** LED on the device is always turned on.
- **On with Timeout but as Locator:** LED glow in lesser brightness after the time out.
- **On with Timeout:** After inactive period LED turns off.



Synchronization Time

Using Wiser app, you can synchronize the time of the device with your smartphone.

On the **Settings** page, tap **Synchronization Time > Update Time & Date** (A). This allows the device time to sync with smartphones in real-time.

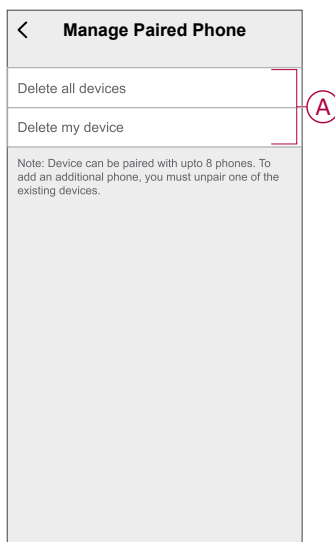


Manage Paired Phone

Using Wiser app, you can view or delete paired phones.

On **Settings** page, tap **Manage Paired Phone** and select any of the following (A):

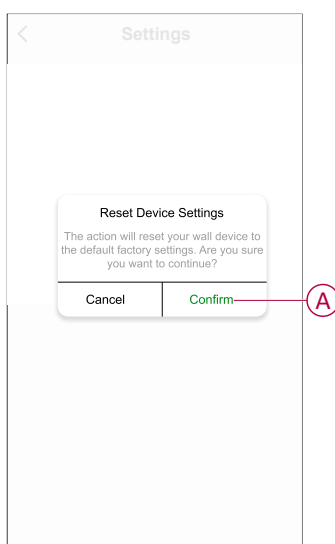
- **Delete all Devices:** the device is removed from all paired phones.
- **Delete my Device:** the device is removed from current phone.



Reset device settings

Using Wiser app, you can reset the device settings to default.

On **Settings** page, tap **Reset device settings**.
Read the information and tap **Confirm** (A).



NOTE: This action will reset the device to default factory settings.

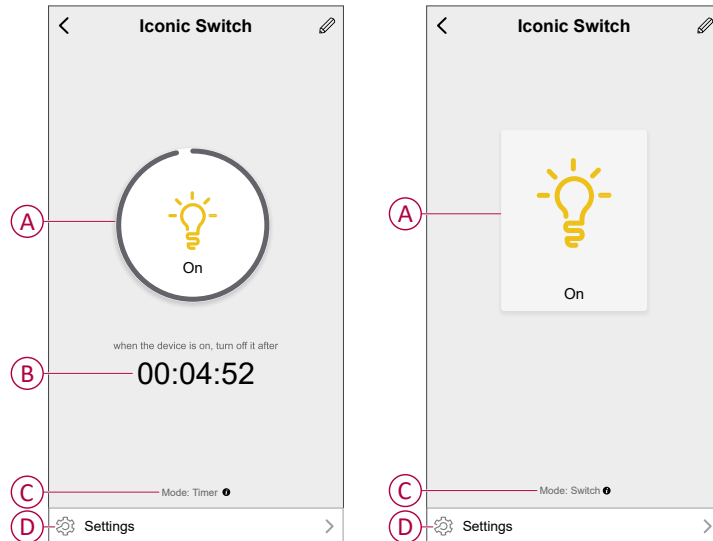
Using the device

The Control Panel allows you to switch on/off and control various settings.

On the **Home** page, tap **All devices > Iconic Switch** to access the control panel.

On the control panel page, you can see the following:

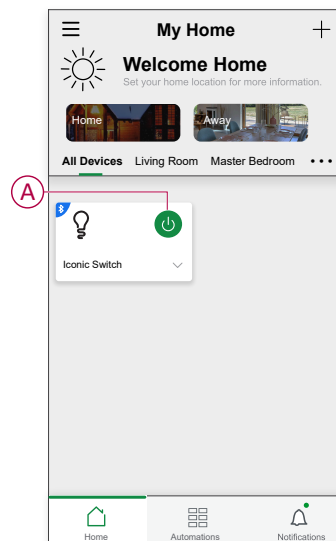
- The current state of the Switch (A)
- Timer count down, page 12 (B)
- Mode selection indicator (C)
- Settings, page 9 (D)




Switching on/off the device using app

By using the Wiser app, you can switch on/off the device.

On the **Home** page, tap the power button (A) to switch on/off.



TIP: You can also navigate to control panel of the device and tap  to switch on/off. The control panel always shows the current state of the switch.

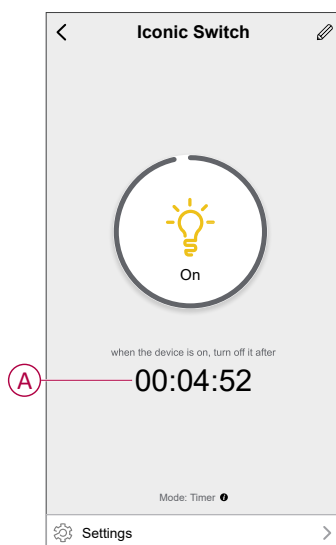
NOTE: During timer mode, the device automatically turns off after a specified period of time. Refer timer mode, page 12.

Setting timer mode

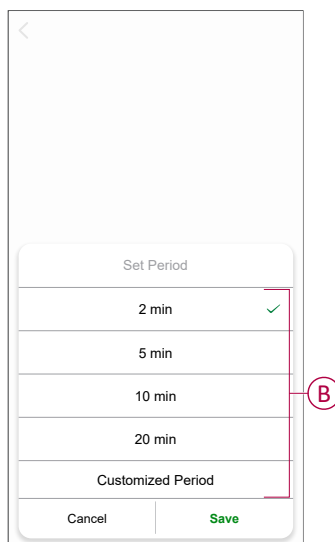
You can set the timer to turn off the device after a certain period of time.

In Wiser app, change the mode from switch to timer, refer to [mode settings](#), page 9.

1. On the device control panel page, tap timer (A) for the slide-up menu.



2. In the slide-up menu select the required **Set Period** (B) and tap **Save**.



Once the countdown timer reaches zero, the device turns off.

Creating a schedule

Using a schedule, you can control and trigger the device. The system will follow the active schedule once it has been set. You can create or modify schedules at any time.

1. On the **Home** page, tap **All devices** > **Iconic Switch**.
2. Tap **Schedule** > **Add schedule**.

3. Tap (A) to set the start time and tap (B) to set end time.

4. Tap (C) and select any one of the following:

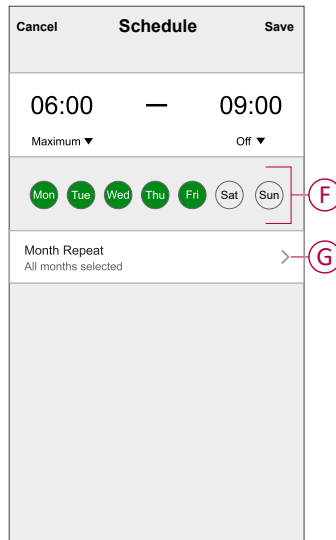
- **Sunrise:** schedule will be triggered at sunrise.
- **Sunset:** schedule will triggered at sunset.
- **Custom:** to set the required start/end time (D).

5. Tap (E) and select any one of the following:

- **On:** to turn on the device.
- **Off:** to turn off the device.

6. Select the days you want to repeat the schedule (F).


7. Tap **Month Repeat** (G) to set the months you want to repeat the schedule.

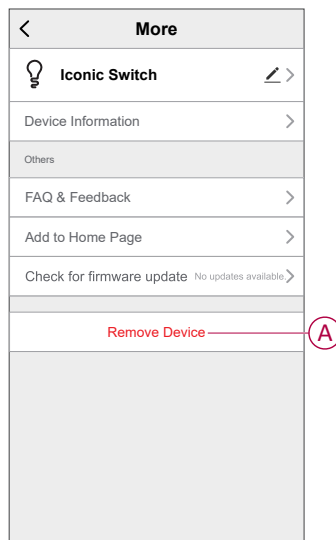


8. Tap **Save**.

Removing the device

Using the Wisernet app, you can remove a device from the device list.

- On the **Home** page, tap **All devices** > **Iconic Switch**.
- Tap  to display more details.
- Tap **Remove device** (A) and select any of the following:
 - Disconnect**: to remove the device.
 - Disconnect & Erase Data**: to remove the device and erase data.



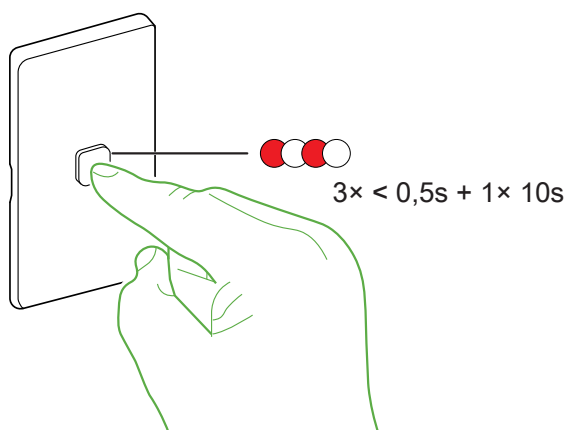
TIP: On the **Home** page, tap and hold the **Iconic Switch** to remove the device.

Resetting the device manually

You can reset the device to factory default manually.

Short press the push button three times (<0,5 s) and then long press the push button once (>10 s).



After 10 s, release the push button when the LED starts blinking red.




NOTE: After reset, the LED turns amber/orange indicating that device is ready for pairing.

LED Indication

Pairing

User Action	LED Indication	Status
Press the push-button 3 times	LED blinks red green. 	Pairing mode is active for 30 seconds. When pairing is completed, LED glows green for some time before turning off. 

Resetting

User Action	LED Indication	Status
Press the push-button 3 times and long press once for > 10 s.	After 10 s, the LED blinks red. 	The device is reset to the factory settings after 10 seconds and the device turns off.

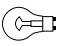
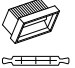

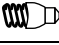
LED Indicator Mode

Load Status	ON	OFF
Reverse with load	No LED	White LED is on
Consistent with load	White LED is on	No LED
Always Off	No LED	No LED
Always On	White LED is on	White LED is on

Troubleshooting

Error	Possible cause	Solution
The device is not ready to pair after the device is removed from the app.	The device is not reset correctly.	Reset to factory default settings, refer to Resetting the device manually, page 15.

Technical data

Nominal power rating for load type		
Load type	Load name	Load value
	Incandescent lamp	2 A
	Halogen lamp	2 A
	lighting transformer	2 A
	Fluorescent lamp	2 A
L	Inductive load	2 A @ 0.6 PF

Nominal voltage	AC 220-240 V, 50 Hz
Nominal current	2 A
Switching technique	Relay
Protection	Over temperature: Yes Short circuit: No Over-current fuse: No Thermal protection: Yes
LED indicator	Yes
Supported protocols	BLE
Mutli-gang plate capacity	Max 6 primary mechs per plate
Compatible plate ranges	Iconic, Iconic Styl, Iconic Essence, Pro Series
Mounting centers	84 mm pattern plate
Safety compliance	AS/NZS 60669.2.1
EMC emission compliance	
IP rating	IP20
Communication protocol	BLE
Operating humidity	5%-90% RH, non-condensing
Specifications typical at 25 °C	

Compliance

Safety	AS/NZS 60669.2.1
EMC	AS/NZS 60669.2.1
RF	AS/NZS 4268

Compliance

Product Environmental Data

Find and download comprehensive environmental data about your products, including RoHS compliance and REACH declarations as well as Product Environmental Profile (PEP), End-of-Life instructions (EOL) and much more.

<https://www.se.com/myschneider>



General information about Schneider Environmental Data Program

Click the link below to read about Schneider Electric's Environmental Data Program.

<https://www.se.com/ww/en/about-us/sustainability/environmental-data-program/>



Trademarks

This guide makes reference to system and brand names that are trademarks of their relevant owners.

- Bluetooth® is a registered trademark of the Bluetooth Special Interest Group (SIG).
- Apple® and App Store® are brand names or registered trademarks of Apple Inc.
- Google Play™ Store and Android™ are brand names or registered trademarks of Google Inc.
- Wi-Fi® is a registered trademark of Wi-Fi Alliance®.
- Wiser™ is a trademark and the property of Schneider Electric, its subsidiaries and affiliated companies.

Other brands and registered trademarks are the property of their respective owners.

Schneider Electric (Australia) Pty Ltd
33-37 Port Wakefield Road
Gepps Cross SA 5094
Australia

Customer Care: 13 73 28

www.clipsal.com

As standards, specifications, and design change from time to time, please ask for confirmation of the information given in this publication.

© 2024 – 2025 Schneider Electric. All rights reserved.

DUG_Iconic Connected Switch 2AX_Pacific_WSE-00